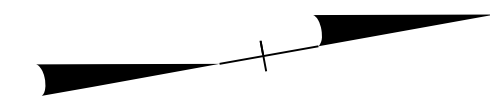


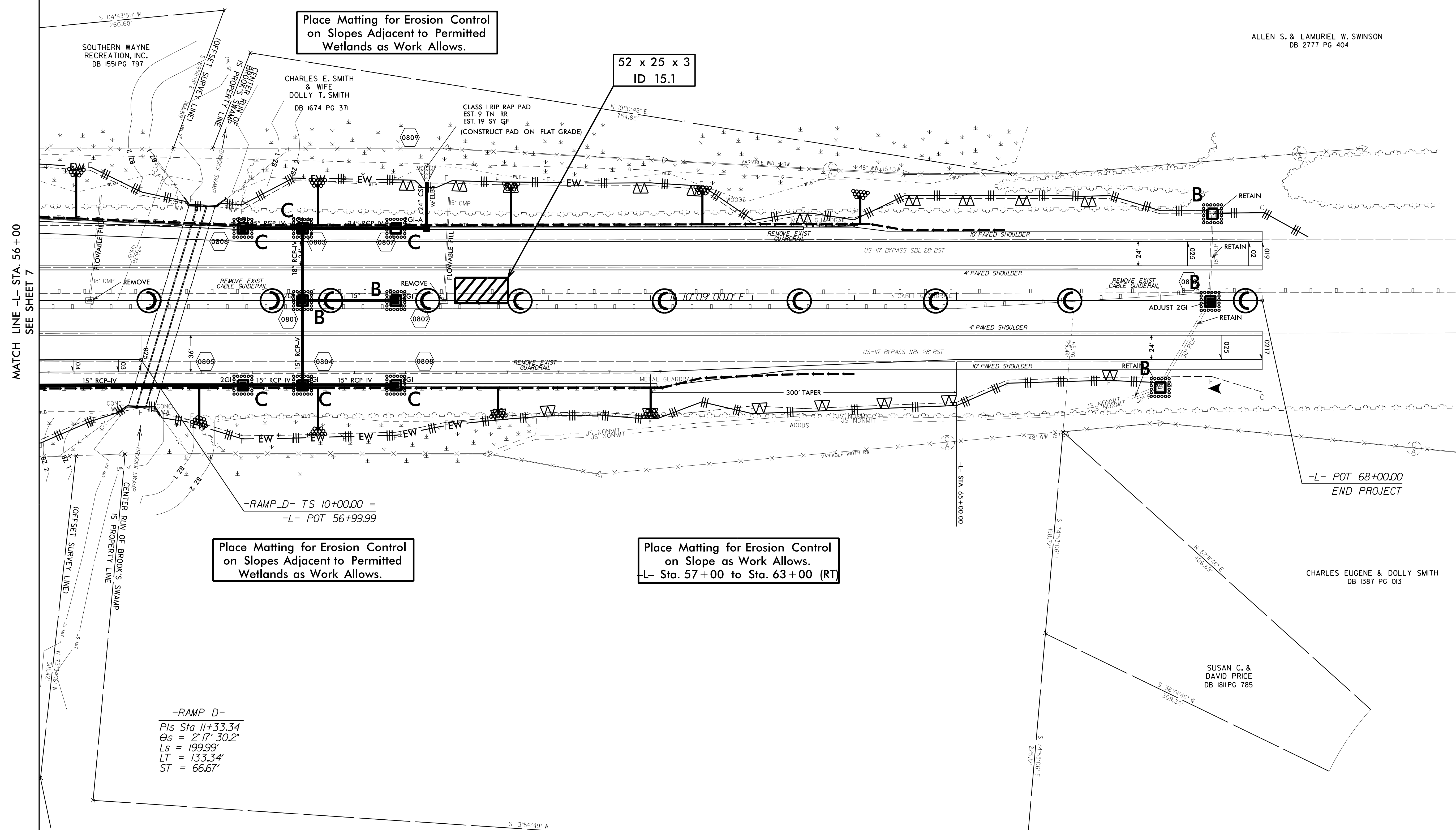
PROJECT REFERENCE NO.	SHEET NO.
R-5719	EC-15/CONST.08
RW SHEET NO.	08
ROADWAY DESIGN ENGINEER	HYDRAULICS ENGINEER

NOTE:
SEE SHEETS 11,12,13 FOR -L- RT PROFILE
SEE SHEETS 13,14,15 FOR -L- LT PROFILE



60

65



Place Matting for Erosion Control on Slopes Adjacent to Permitted Wetlands as Work Allows.

52 x 25 x 3
ID 15.1

Place Matting for Erosion Control on Slopes Adjacent to Permitted Wetlands as Work Allows.

Place Matting for Erosion Control on Slope as Work Allows.
L- Sta. 57+00 to Sta. 63+00 (RT)

MATCH LINE -L- STA. 56+00
SEE SHEET 7

-L- POT 68+00.00
END PROJECT

-RAMP D- TS 10+00.00 =
-L- POT 56+99.99

-RAMP D-
Pls Sta 11+33.34
Os = 2' 17" 30.2"
Ls = 199.99'
LT = 133.34'
ST = 66.67'

ALLEN S. & LAMURIEL W. SWINSON
DB 2777 PG 404

CHARLES EUGENE & DOLLY SMITH
DB 1387 PG 013

SUSAN C. & DAVID PRICE
DB 1811 PG 785

REVISIONS

8/17/99
8/17/2017
8:02:30 AM
E:\2015\SR-5719\Erosion_Control\PlanSheets\15-19_EC_PSH15.dwg