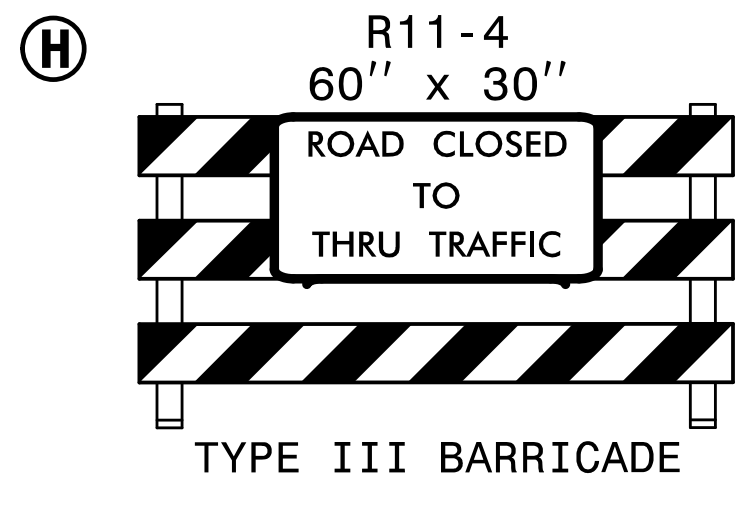
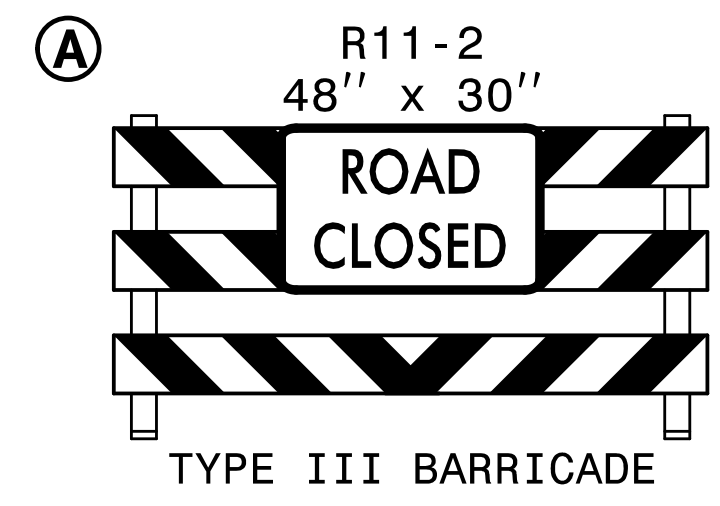
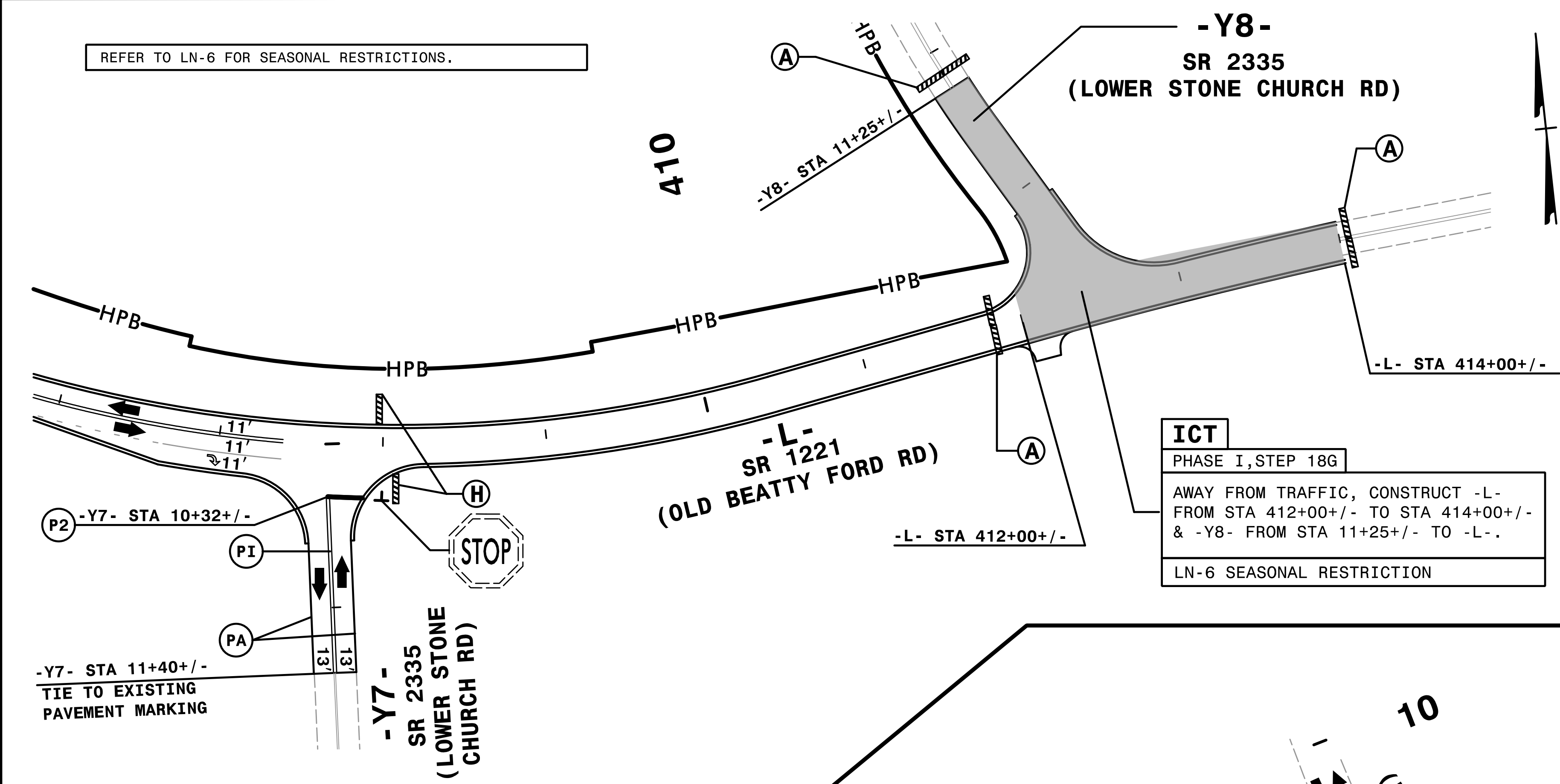


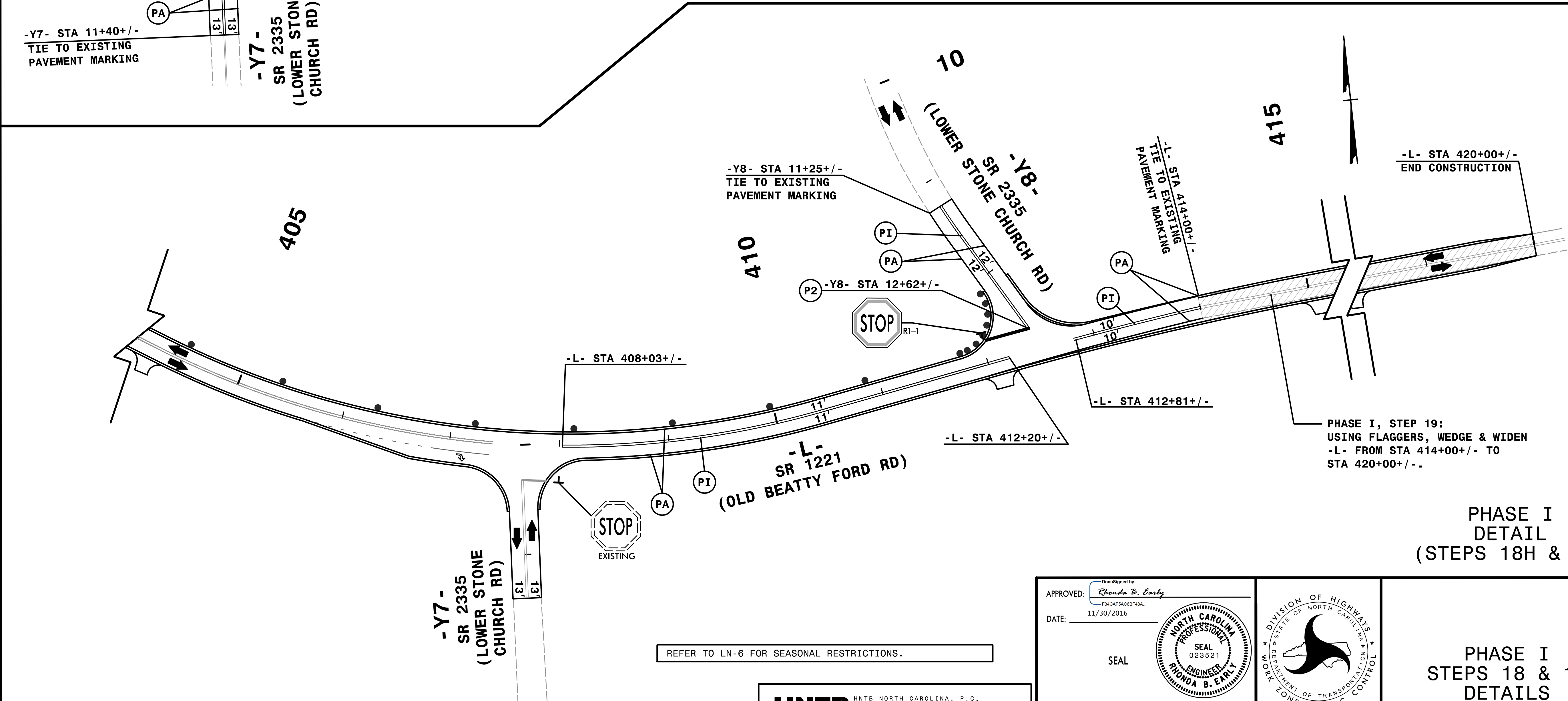
REFER TO LN-6 FOR SEASONAL RESTRICTIONS.



REFER TO DETOUR DETAIL #6A (TMP-2G) FOR OFFSITE DETOUR ROUTE AND INCLUDE ADDITIONAL ADVANCE WARNING SIGNS AND DEVICES AS SHOWN ON ROADWAY STANDARD DRAWING 1101.03 (1 & 2 OF 9).

ICT
 PHASE I, STEP 18G
 AWAY FROM TRAFFIC, CONSTRUCT -L- FROM STA 412+00+/- TO STA 414+00+/- & -Y8- FROM STA 11+25+/- TO -L-.
 LN-6 SEASONAL RESTRICTION

PHASE I
 DETAIL
 (STEP 18G)

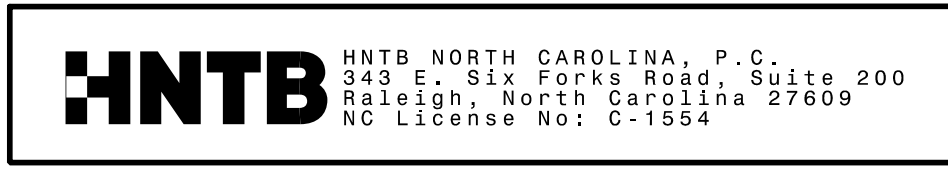


PHASE I, STEP 19:
 USING FLAGGERS, WEDGE & WIDEN
 -L- FROM STA 414+00+/- TO STA 420+00+/-.

PHASE I
 DETAIL
 (STEPS 18H & 19)

REFER TO LN-6 FOR SEASONAL RESTRICTIONS.

11/5/28 AM
 Y7Y8.dgn
 HNTB



APPROVED: *Rhonda B. Early*
 DATE: 11/30/2016
 SEAL
 NORTH CAROLINA PROFESSIONAL ENGINEER
 SEAL 023521
 RHONDA B. EARLY



PHASE I
 STEPS 18 & 19
 DETAILS

DOCUMENT NOT CONSIDERED FINAL
 UNLESS ALL SIGNATURES COMPLETED