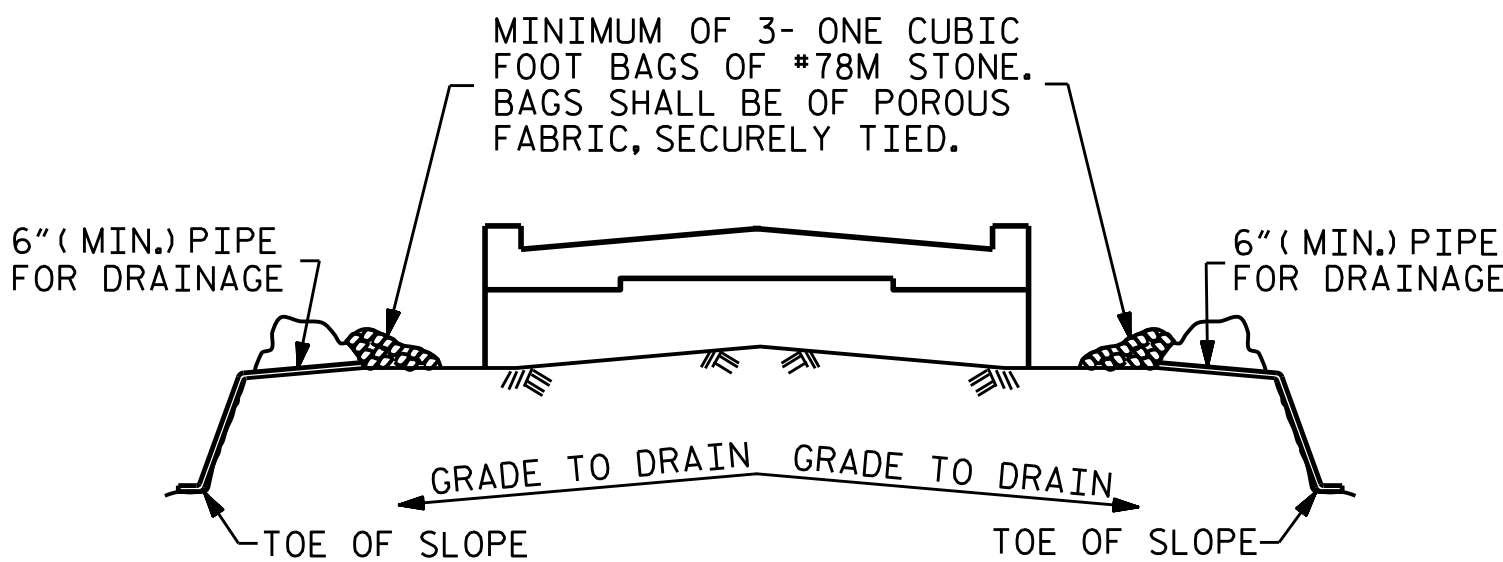


PILE SPLICE DETAILS



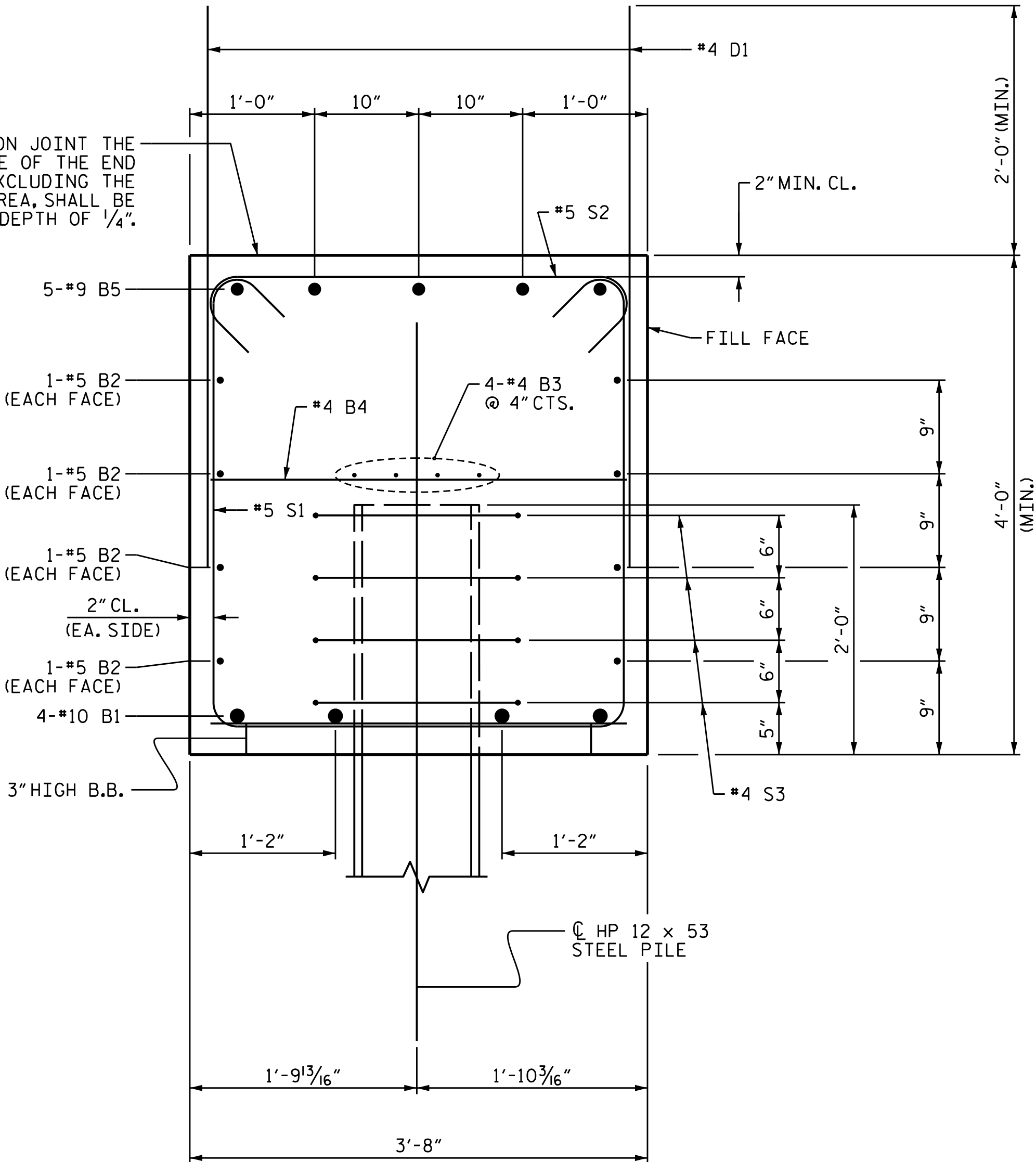
BAGGED STONE AND PIPE SHALL BE PLACED IMMEDIATELY AFTER COMPLETION OF END BENT EXCAVATION. PIPE MAY BE EITHER CONCRETE, CORRUGATED STEEL, CORRUGATED ALUMINUM ALLOY, OR CORRUGATED PLASTIC. PERFORATED PIPE WILL NOT BE ALLOWED.

BAGGED STONE SHALL REMAIN IN PLACE UNTIL THE ENGINEER DIRECTS THAT IT BE REMOVED. THE CONTRACTOR SHALL REMOVE AND DISPOSE OF SILT ACCUMULATIONS AT BAGGED STONE WHEN SO DIRECTED BY THE ENGINEER. BAGS SHALL BE REMOVED AND REPLACED WHENEVER THE ENGINEER DETERMINES THAT THEY HAVE DETERIORATED AND LOST THEIR EFFECTIVENESS.

NO SEPARATE PAYMENT WILL BE MADE FOR THIS WORK AND THE ENTIRE COST OF THIS WORK SHALL BE INCLUDED IN THE UNIT CONTRACT PRICE BID FOR THE SEVERAL PAY ITEMS.

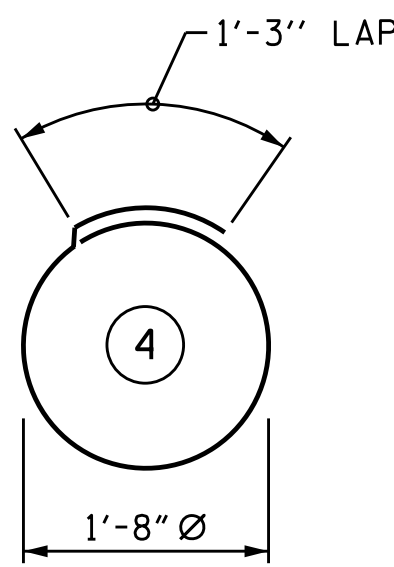
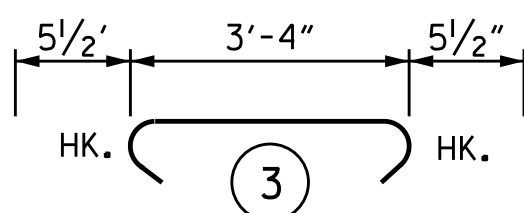
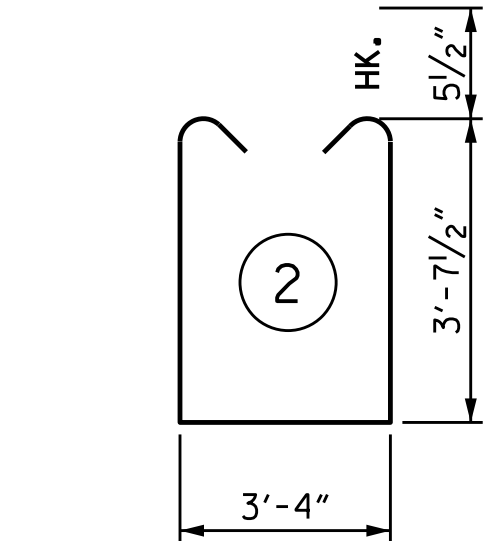
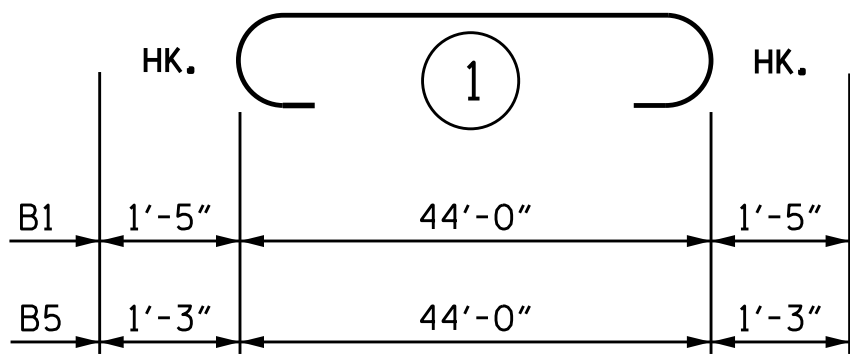
TEMPORARY DRAINAGE AT END BENT

CONSTRUCTION JOINT THE TOP SURFACE OF THE END BENT CAP, EXCLUDING THE BEARING AREA, SHALL BE RAKED TO A DEPTH OF 1/4".

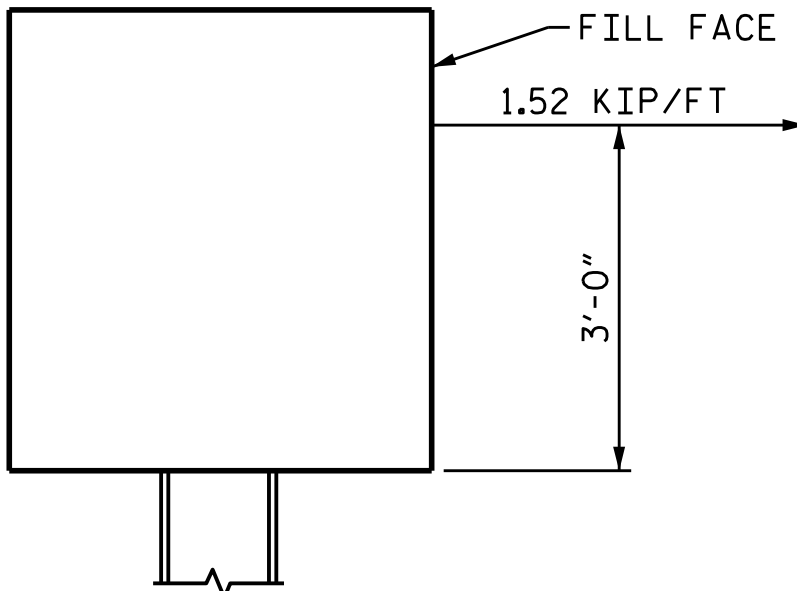


SECTION A-A

BAR TYPES



ALL BAR DIMENSIONS ARE OUT TO OUT.



MSE REINFORCING STRAP LOAD DETAIL

DESIGN REINFORCEMENT CONNECTED TO INTEGRAL END BENT CAPS FOR THE LOADING SHOWN AND CAST THE REINFORCEMENT CONNECTION HARDWARE INTO THE INTEGRAL END BENT. MAINTAIN A CLEARANCE OF 3" BETWEEN THE HARDWARE AND REINFORCING STEEL IN THE CAP.

BILL OF MATERIAL

INTEGRAL END BENT 2

BAR	NO.	SIZE	TYPE	LENGTH	WEIGHT
B1	4	#10	1	46'-10"	806
B2	8	#5	STR	44'-2"	369
B3	8	#4	STR	23'-5"	125
B4	11	#4	STR	3'-4"	24
B5	5	#9	1	46'-6"	791
D1	80	#4	STR	4'-6"	240
S1	56	#5	2	11'-6"	672
S2	42	#5	3	4'-3"	186
S3	28	#4	4	6'-6"	122

REINFORCING STEEL LBS. 3,335

CLASS "A" CONCRETE

POUR #1 CAP	CU. YDS.	24.7
TOTAL =	CU. YDS.	24.7

PILE DRIVING EQUIPMENT SET UP FOR HP 12X53 STEEL PILES

7 EACH

HP 12 X 53 STEEL PILE

NO. = 7	LIN. FT.	525
PILE REDRIVES	EACH	4

PROJECT NO. B-4616
ROBESON COUNTY
STATION: 31+55.47 -L-

SHEET 2 OF 2

STATE OF NORTH CAROLINA
DEPARTMENT OF TRANSPORTATION
RALEIGH

SUBSTRUCTURE

INTEGRAL
END BENT 2

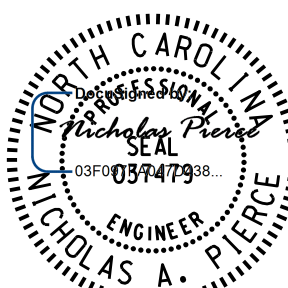
REVISIONS

NO.	BY:	DATE:	NO.	BY:	DATE:	SHEET NO.
1			3			S1-23
2			4			TOTAL SHEETS 25



PARSONS
BRINCKERHOFF

434 FAYETTEVILLE STREET
SUITE 1500
RALEIGH, NC 27601
LICENSE NO. F-0165



4/13/2017

DOCUMENT NOT CONSIDERED FINAL
UNLESS ALL SIGNATURES COMPLETED

DESIGNED BY:	J.D. BORUTA	DATE :	04/2016
DRAWN BY:	M.J. OSTRISHKO	DATE :	04/2016
CHECKED BY:	E. ULLMER	DATE :	05/2016
DESIGN ENGINEER OF RECORD:	N.A. PIERCE	DATE :	06/2016