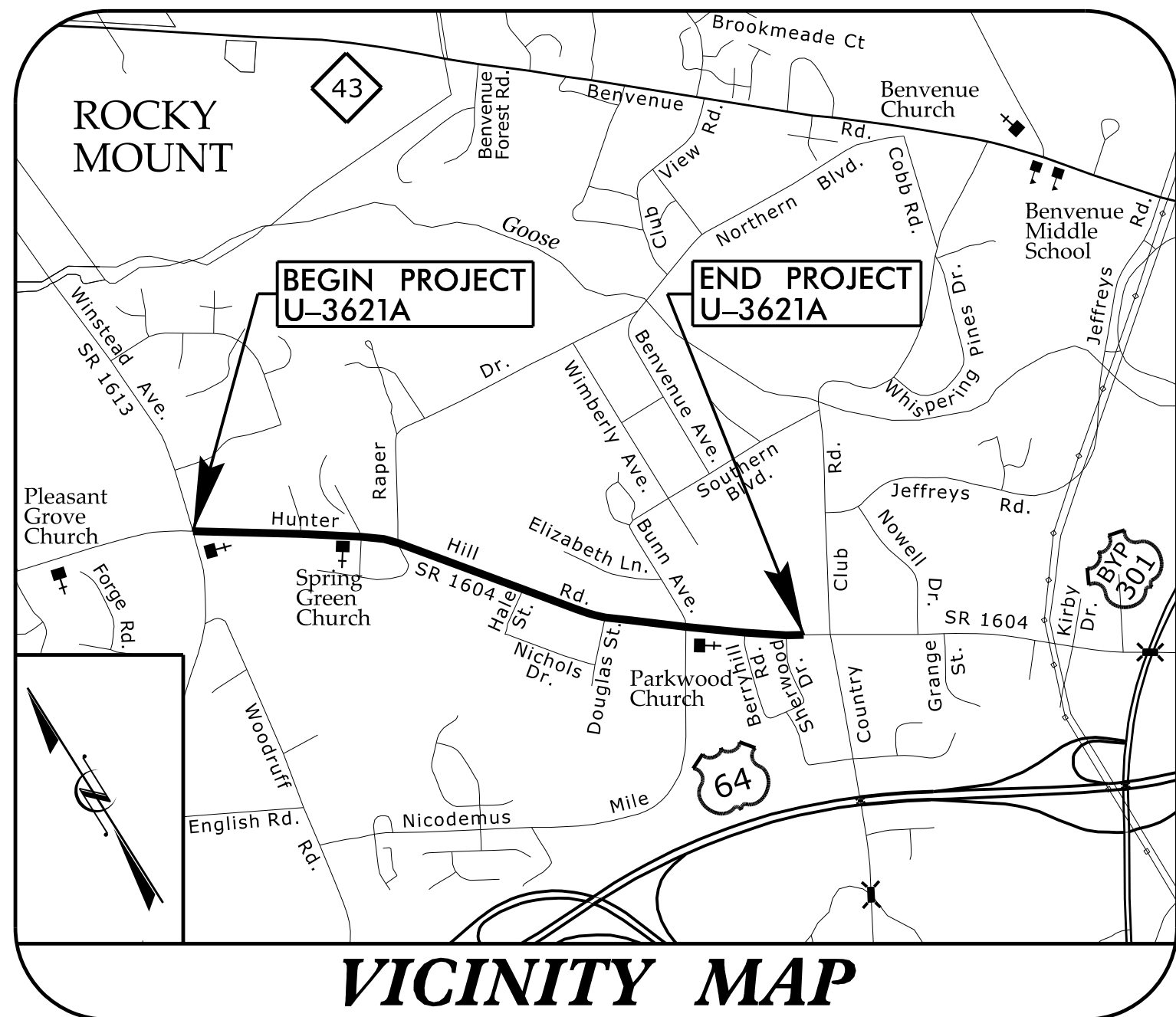


**This electronic collection of documents is provided
for the convenience of the user
and is Not a Certified Document –**

**The documents contained herein were originally issued
and sealed by the individuals whose names and license
numbers appear on each page, on the dates appearing
with their signature on that page.**

**This file or an individual page
shall not be considered a certified document.**

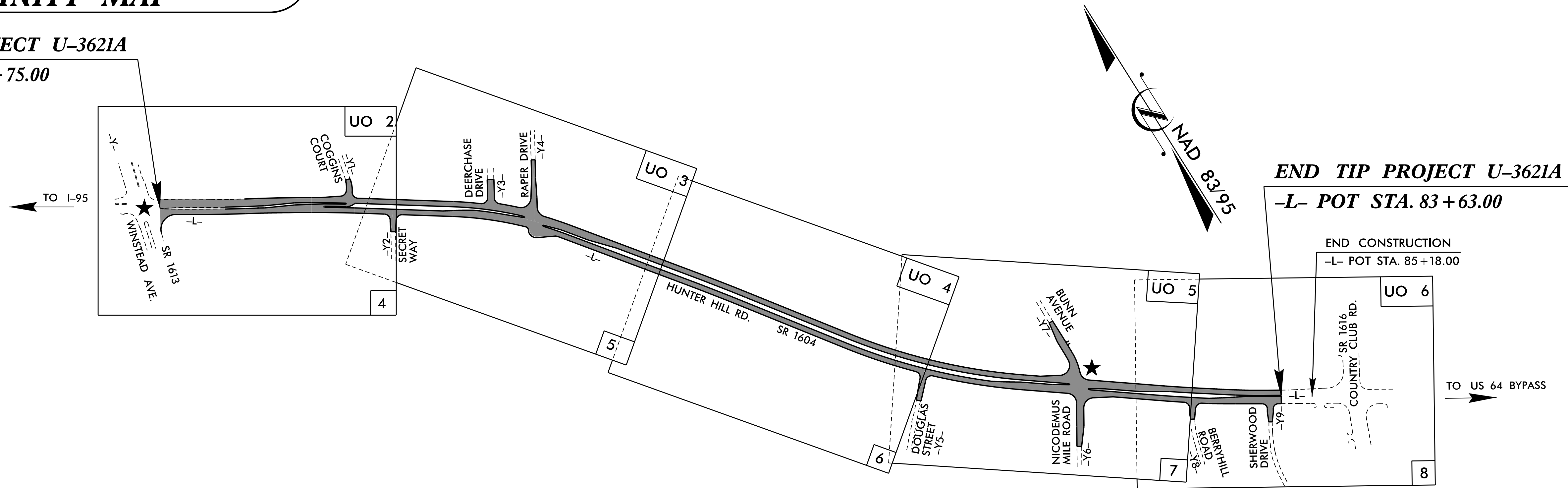
See Sheet 1A For Index of Sheets
See Sheet 1B For Conventional Symbols



VICINITY MAP

BEGIN TIP PROJECT U-3621A

-L- POC STA. 25 + 75.00



END TIP PROJECT U-3621A

-L- POT STA. 83 + 63.00

END CONSTRUCTION
-L- POT STA. 85 + 18.00

TIP PROJECT: U-3621A

STATE OF NORTH CAROLINA DIVISION OF HIGHWAYS

UTILITIES BY OTHERS PLANS NASH COUNTY

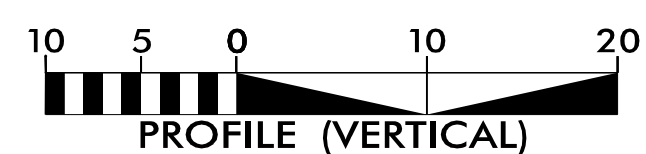
**LOCATION: ROCKY MOUNT - SR 1604 (HUNTER HILL ROAD)
FROM SR 1613 (NORTH WINSTEAD AVE.) TO
SR 1616 (COUNTRY CLUB ROAD)**

TYPE OF WORK: RELOCATE UTILITY LINES

T.I.P. NO.	SHEET NO.
U-3621A	UO-1

NOTE:
ALL UTILITY WORK SHOWN ON THIS SHEET IS DONE BY OTHERS.
NO PAYMENT WILL BE MADE TO THE CONTRACTOR FOR UTILITY WORK SHOWN ON THIS SHEET.

GRAPHIC SCALES



INDEX OF SHEETS

SHEET NO.:	DESCRIPTION:
UO-1	TITLE SHEET
UO-02 THRU UO-06	UBO PLAN SHEETS

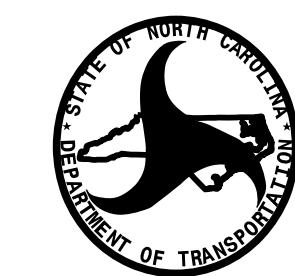
UTILITY OWNERS WITH CONFLICTS

- (A) Power - City of Rocky Mount
- (B) Gas - City of Rocky Mount
- (C) Phone - CenturyLink
- (D) Communications - MCNC

PREPARED IN THE OFFICE OF:

**M A Engineering
Consultants, Inc.**

598 East Chatham Street - Suite 137
Cary, NC 27511
Phone: 919.297.0220 Fax: 919.297.0221
NC License: F-0160



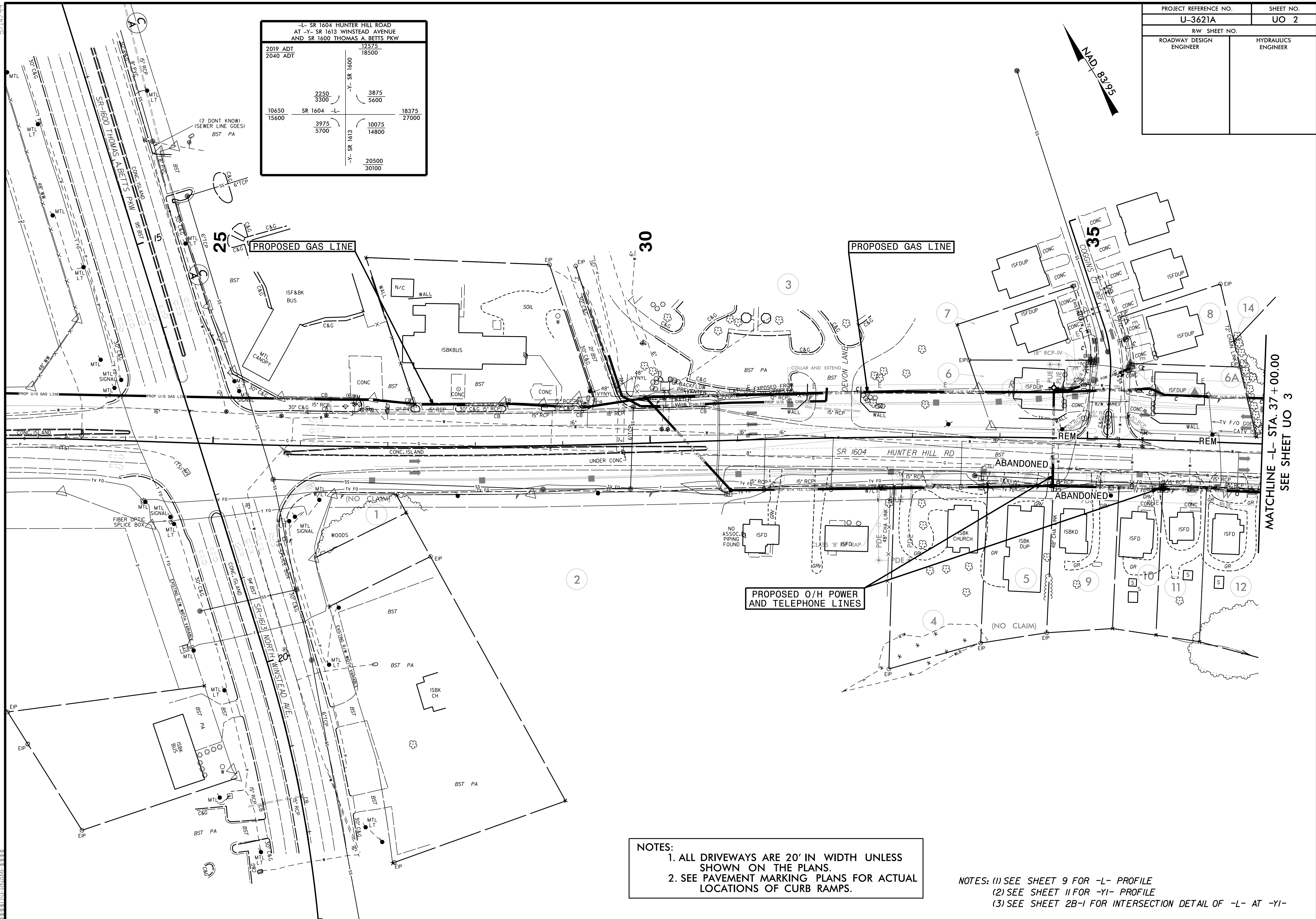
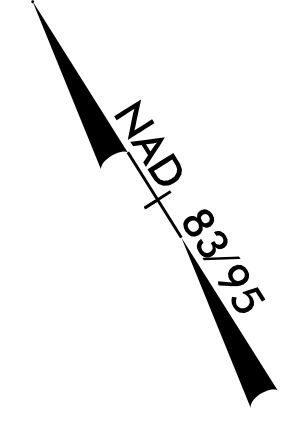
**DIVISION OF HIGHWAYS
UTILITIES UNIT**
1555 MAIL SERVICES CENTER
RALEIGH, NC 27699-1555
PHONE (919) 707-6690
FAX (919) 250-4151

BO HEMPHILL, PE	EASTERN UTILITIES MANAGER
KIFAH KAMIL	SENIOR UTILITIES ENGINEER
KYLE PLEASANT	AREA UTILITY COORDINATOR
LARRY JAMES	UTILITY COORDINATOR

WEBB WHITE PROJECT CADD TECHNICIAN

PROJECT REFERENCE NO.	SHEET NO.
U-3621A	UO 2
RW SHEET NO.	
ROADWAY DESIGN ENGINEER	HYDRAULICS ENGINEER

-L- SR 1604 HUNTER HILL ROAD AT -Y- SR 1613 WINSTEAD AVENUE AND SR 1600 THOMAS A. BETTS PKW			
2019 ADT	12575		
2040 ADT	18500		
	2250	3875	
	3300	5600	
10650	SR 1604	18375	27000
15600		10075	14800
	3975	5700	
	-Y- SR 1613	20500	30100



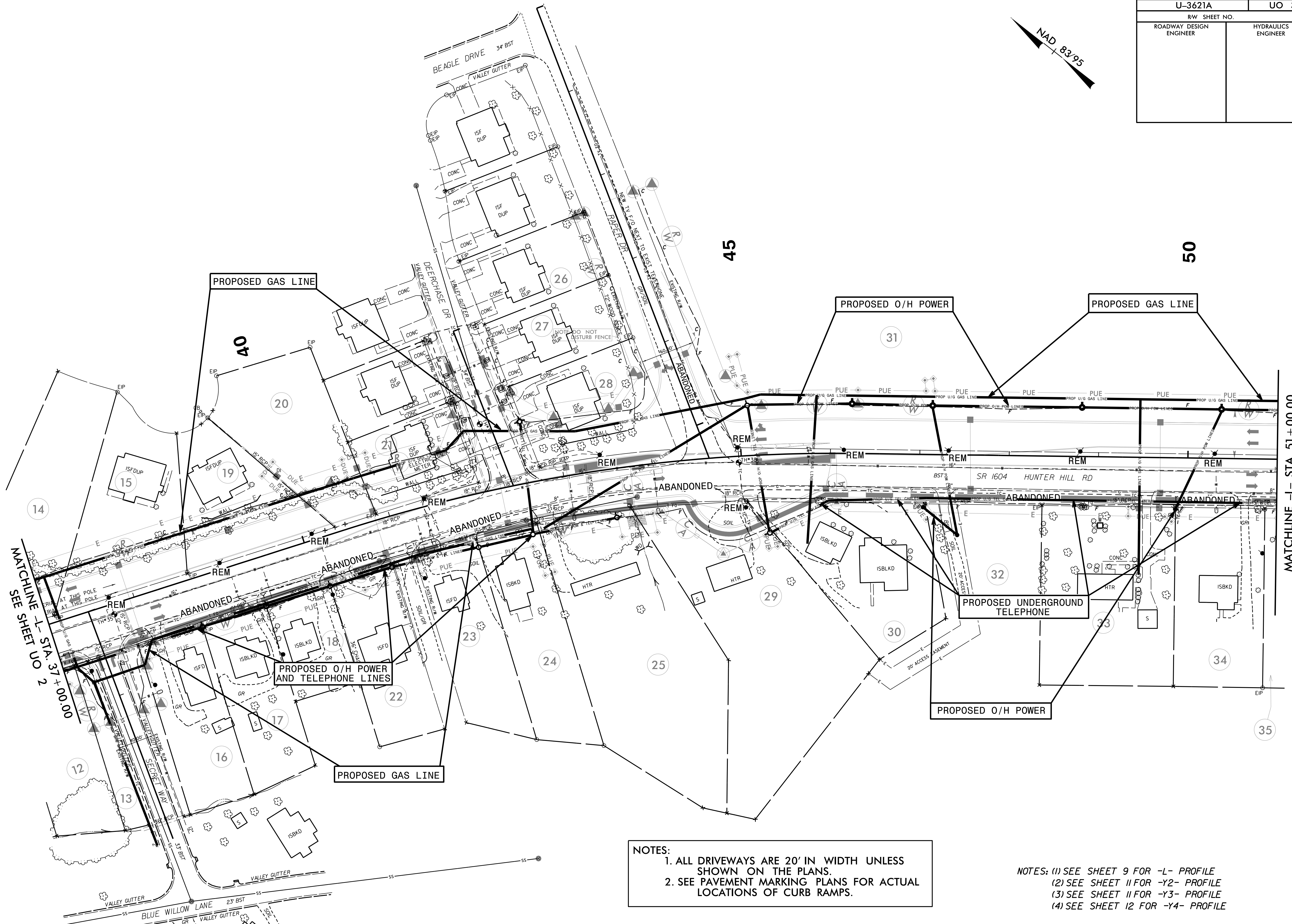
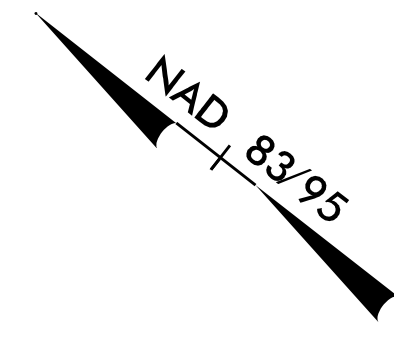
NOTES:
 1. ALL DRIVEWAYS ARE 20' IN WIDTH UNLESS SHOWN ON THE PLANS.
 2. SEE PAVEMENT MARKING PLANS FOR ACTUAL LOCATIONS OF CURB RAMPS.

NOTES: (1) SEE SHEET 9 FOR -L- PROFILE
 (2) SEE SHEET 11 FOR -Y1- PROFILE
 (3) SEE SHEET 2B-1 FOR INTERSECTION DETAIL OF -L- AT -Y1-

MATCHLINE -L- STA. 37+00.00
SEE SHEET UO 3

5/14/99

PROJECT REFERENCE NO. U-3621A	SHEET NO. UO 3
RW SHEET NO.	
ROADWAY DESIGN ENGINEER	HYDRAULICS ENGINEER



MATCHLINE SEE SHEET UO 2
-L- STA. 37+00.00

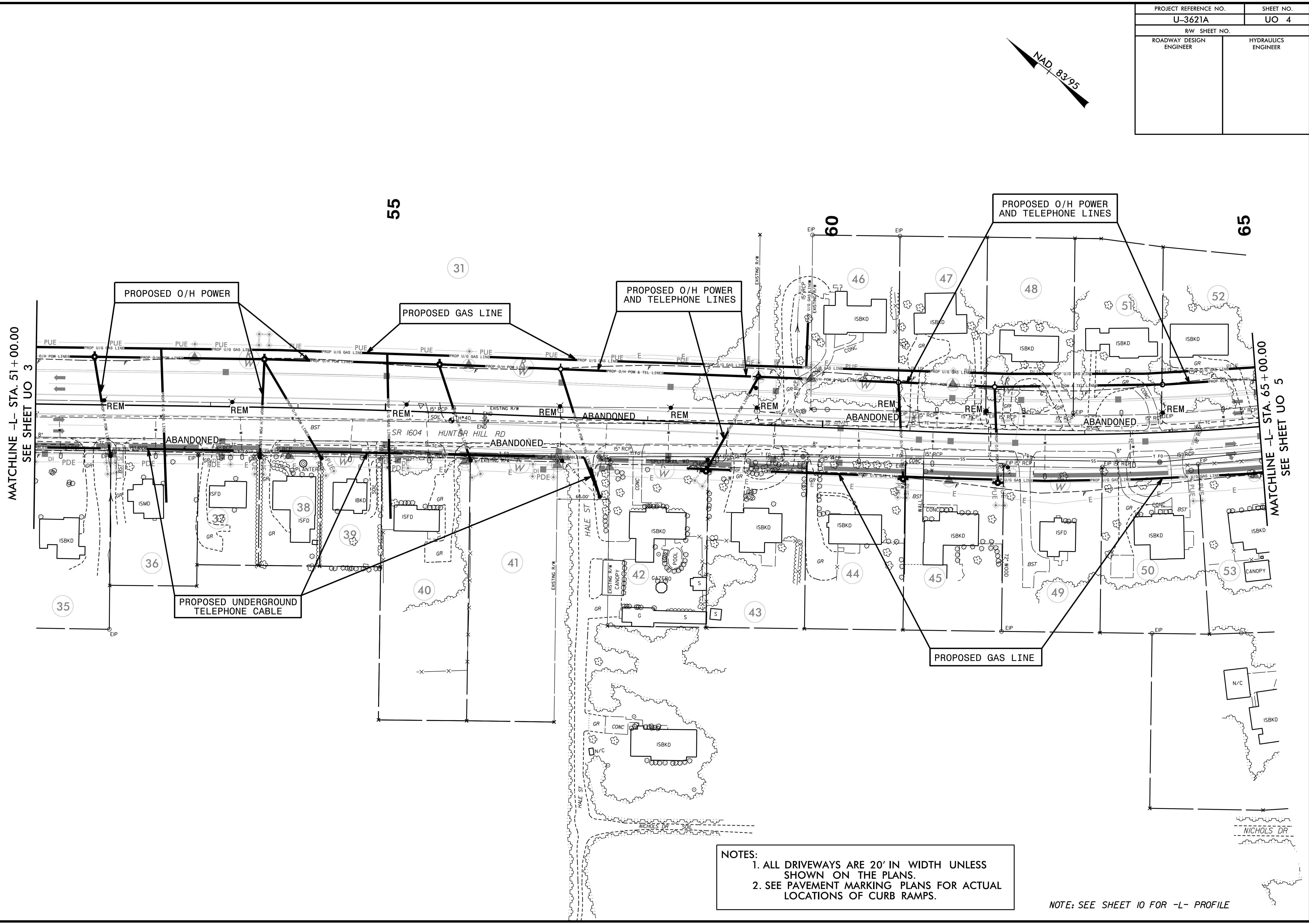
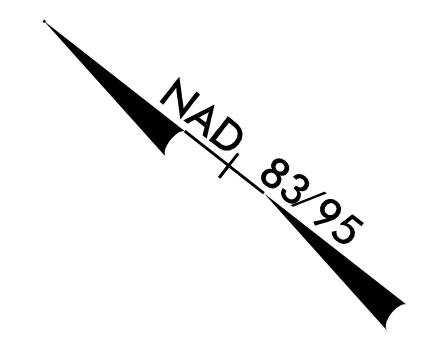
MATCHLINE -L- STA. 51+00.00
SEE SHEET UO 4

NOTES:
 1. ALL DRIVEWAYS ARE 20' IN WIDTH UNLESS SHOWN ON THE PLANS.
 2. SEE PAVEMENT MARKING PLANS FOR ACTUAL LOCATIONS OF CURB RAMPS.

NOTES: (1) SEE SHEET 9 FOR -L- PROFILE
 (2) SEE SHEET 11 FOR -Y2- PROFILE
 (3) SEE SHEET 11 FOR -Y3- PROFILE
 (4) SEE SHEET 12 FOR -Y4- PROFILE

5/14/99

PROJECT REFERENCE NO.	SHEET NO.
U-3621A	UO 4
RW SHEET NO.	
ROADWAY DESIGN ENGINEER	HYDRAULICS ENGINEER



MATCHLINE -L- STA. 51+00.00
SEE SHEET UO 3

MATCHLINE -L- STA. 65+00.00
SEE SHEET UO 5

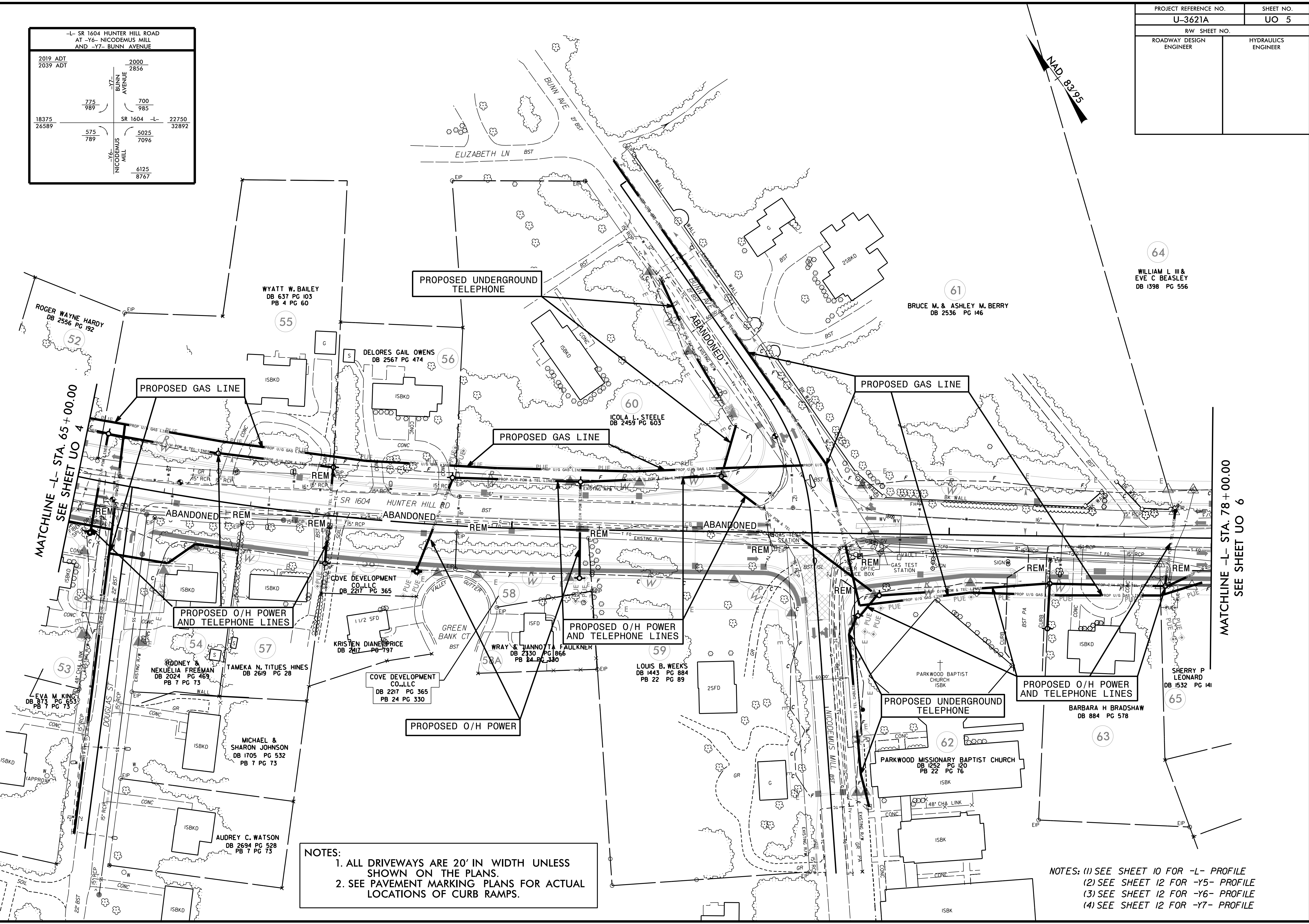
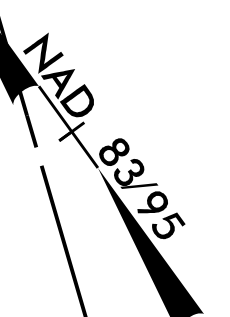
NOTES:
 1. ALL DRIVEWAYS ARE 20' IN WIDTH UNLESS SHOWN ON THE PLANS.
 2. SEE PAVEMENT MARKING PLANS FOR ACTUAL LOCATIONS OF CURB RAMPS.

NOTE: SEE SHEET 10 FOR -L- PROFILE

5/14/99

PROJECT REFERENCE NO.	SHEET NO.
U-3621A	UO 5
RW SHEET NO.	
ROADWAY DESIGN ENGINEER	HYDRAULICS ENGINEER

-L- SR 1604 HUNTER HILL ROAD AT -Y6- NICODEMUS MILL AND -Y7- BUNN AVENUE	
2019 ADT 2039 ADT	2000 2856
775 989	700 985
18375 26589	22750 32892
575 789	5025 7096
	6125 8767



MATCHLINE -L- STA. 65+00.00
SEE SHEET UO 4

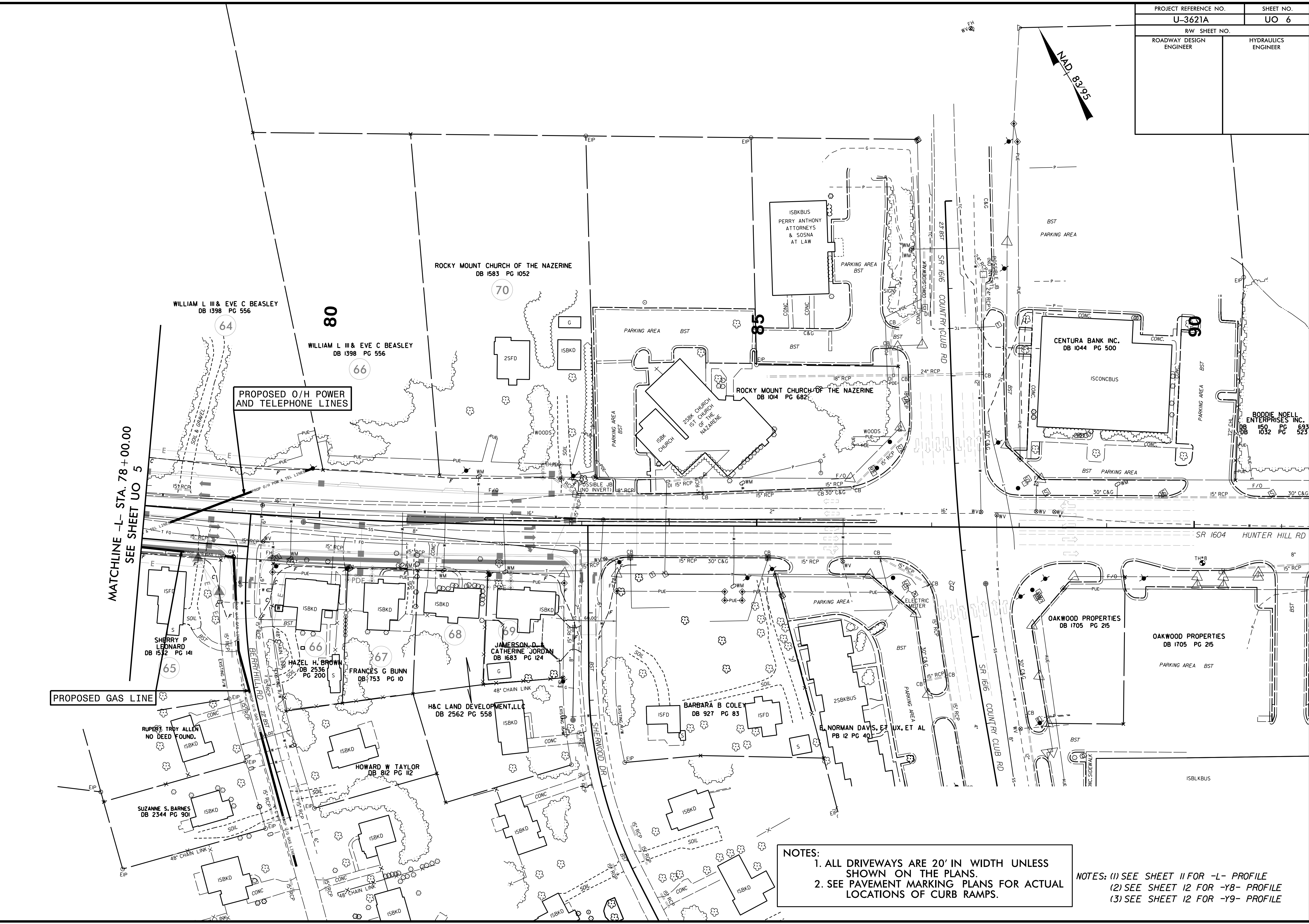
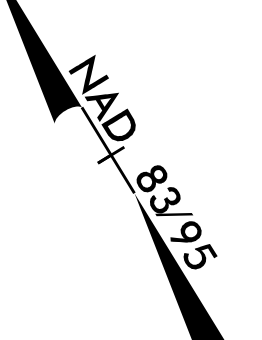
MATCHLINE -L- STA. 78+00.00
SEE SHEET UO 6

NOTES:
 1. ALL DRIVEWAYS ARE 20' IN WIDTH UNLESS SHOWN ON THE PLANS.
 2. SEE PAVEMENT MARKING PLANS FOR ACTUAL LOCATIONS OF CURB RAMPS.

NOTES: (1) SEE SHEET 10 FOR -L- PROFILE
 (2) SEE SHEET 12 FOR -Y5- PROFILE
 (3) SEE SHEET 12 FOR -Y6- PROFILE
 (4) SEE SHEET 12 FOR -Y7- PROFILE

5/14/99

PROJECT REFERENCE NO. U-3621A	SHEET NO. UO 6
RW SHEET NO.	
ROADWAY DESIGN ENGINEER	HYDRAULICS ENGINEER



MATCHLINE -L- STA. 78+00.00
SEE SHEET UO 5

PROPOSED O/H POWER AND TELEPHONE LINES

PROPOSED GAS LINE

NOTES:
 1. ALL DRIVEWAYS ARE 20' IN WIDTH UNLESS SHOWN ON THE PLANS.
 2. SEE PAVEMENT MARKING PLANS FOR ACTUAL LOCATIONS OF CURB RAMPS.

NOTES: (1) SEE SHEET 11 FOR -L- PROFILE
 (2) SEE SHEET 12 FOR -Y8- PROFILE
 (3) SEE SHEET 12 FOR -Y9- PROFILE

5/14/99
 69 68 67 66 65 64 63 62 61 60 59 58 57 56 55 54 53 52 51 50 49 48 47 46 45 44 43 42 41 40 39 38 37 36 35 34 33 32 31 30 29 28 27 26 25 24 23 22 21 20 19 18 17 16 15 14 13 12 11 10 9 8 7 6 5 4 3 2 1