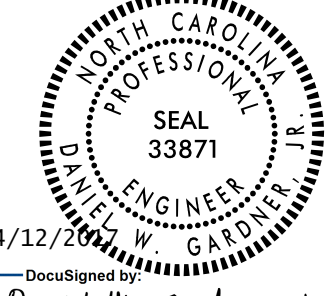
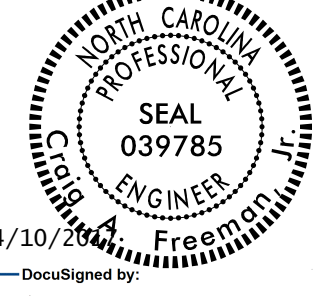
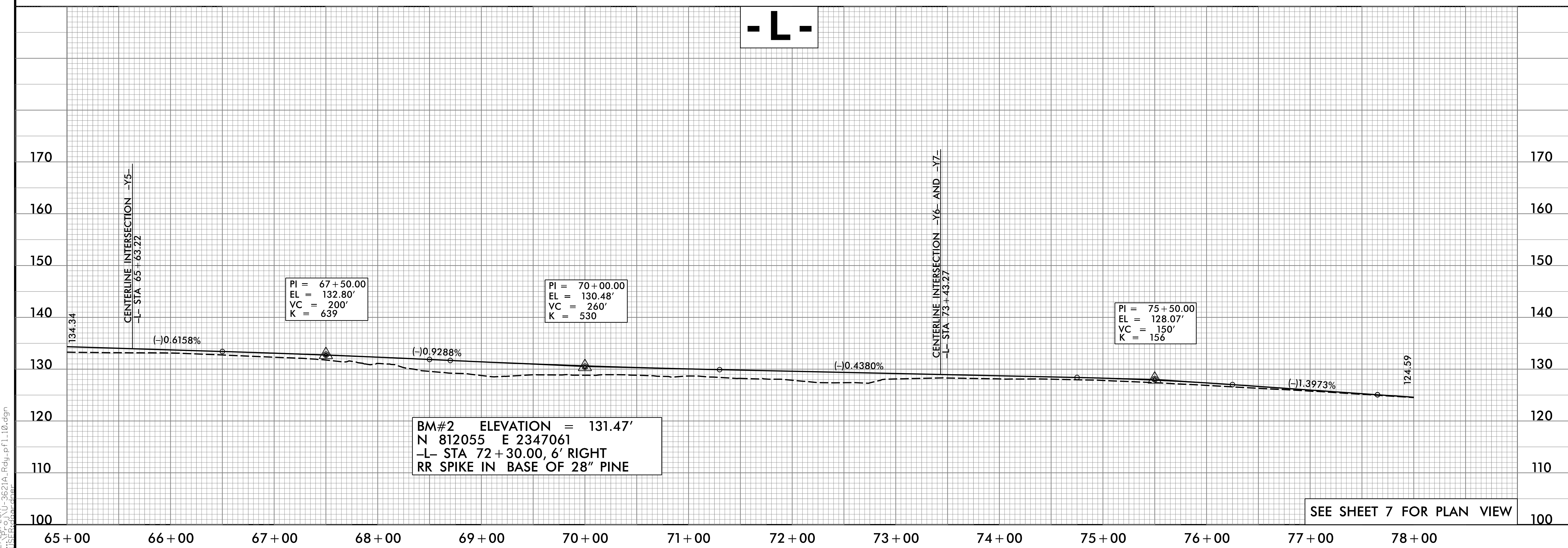
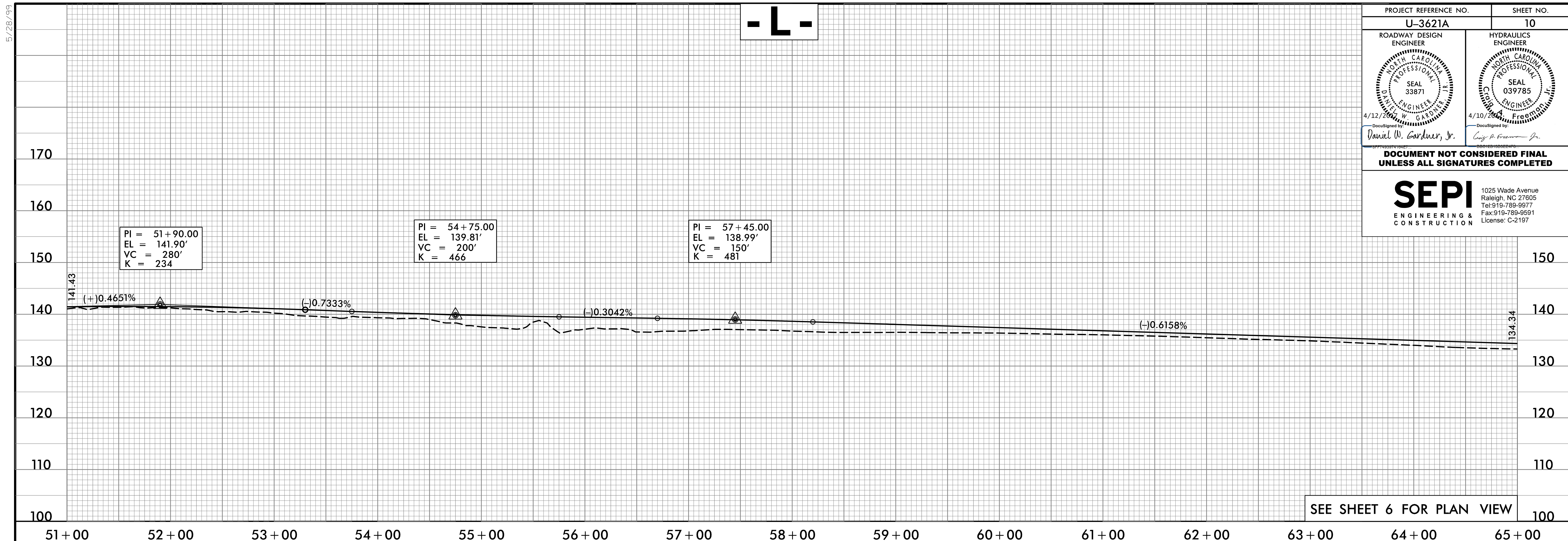


PROJECT REFERENCE NO. U-3621A		SHEET NO. 10
ROADWAY DESIGN ENGINEER 	HYDRAULICS ENGINEER 	
<p>DOCUMENT NOT CONSIDERED FINAL UNLESS ALL SIGNATURES COMPLETED</p> <p>SEPI ENGINEERING & CONSTRUCTION <small>1025 Wade Avenue Raleigh, NC 27605 Tel: 919-789-9977 Fax: 919-789-9591 License: C-2197</small></p>		



2/28/2017 11:55:11 AM U:_3621A_Rd\p1.10.dgn