

5/14/99

REVISIONS

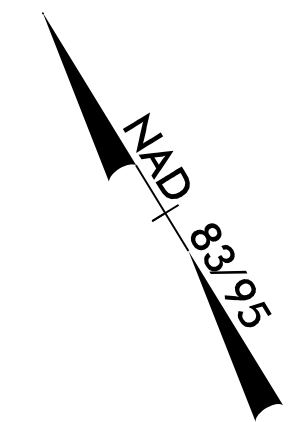
2/28/2017 U-3621A_Rdy_psh_8.dgn
US:Rdy:ps:sh

-L-	-Y8-	-Y9-	-Y10-
PI Sta 80+37.32	PI Sta 11+52.48	PI Sta 12+97.20	PI Sta 14+11.07
$\Delta = 4' 56" 37.8" (LT)$	$\Delta = 20' 50" 39.7" (LT)$	$\Delta = 26' 43" 55.4" (LT)$	$\Delta = 7' 57" 10.4" (LT)$
$D = 0' 57" 17.7"$	$D = 10' 25" 02.7"$	$D = 11' 27" 33.0"$	$D = 2' 30" 00.0"$
$L = 517.72'$	$L = 200.09'$	$L = 233.28'$	$L = 318.12'$
$T = 259.02'$	$T = 101.6'$	$T = 118.80'$	$T = 159.31'$
$R = 6,000.00'$	$R = 550.00'$	$R = 500.00'$	$R = 2,291.83'$
SE = SEE PLANS	SE = SEE PLANS	SE = SEE PLANS	

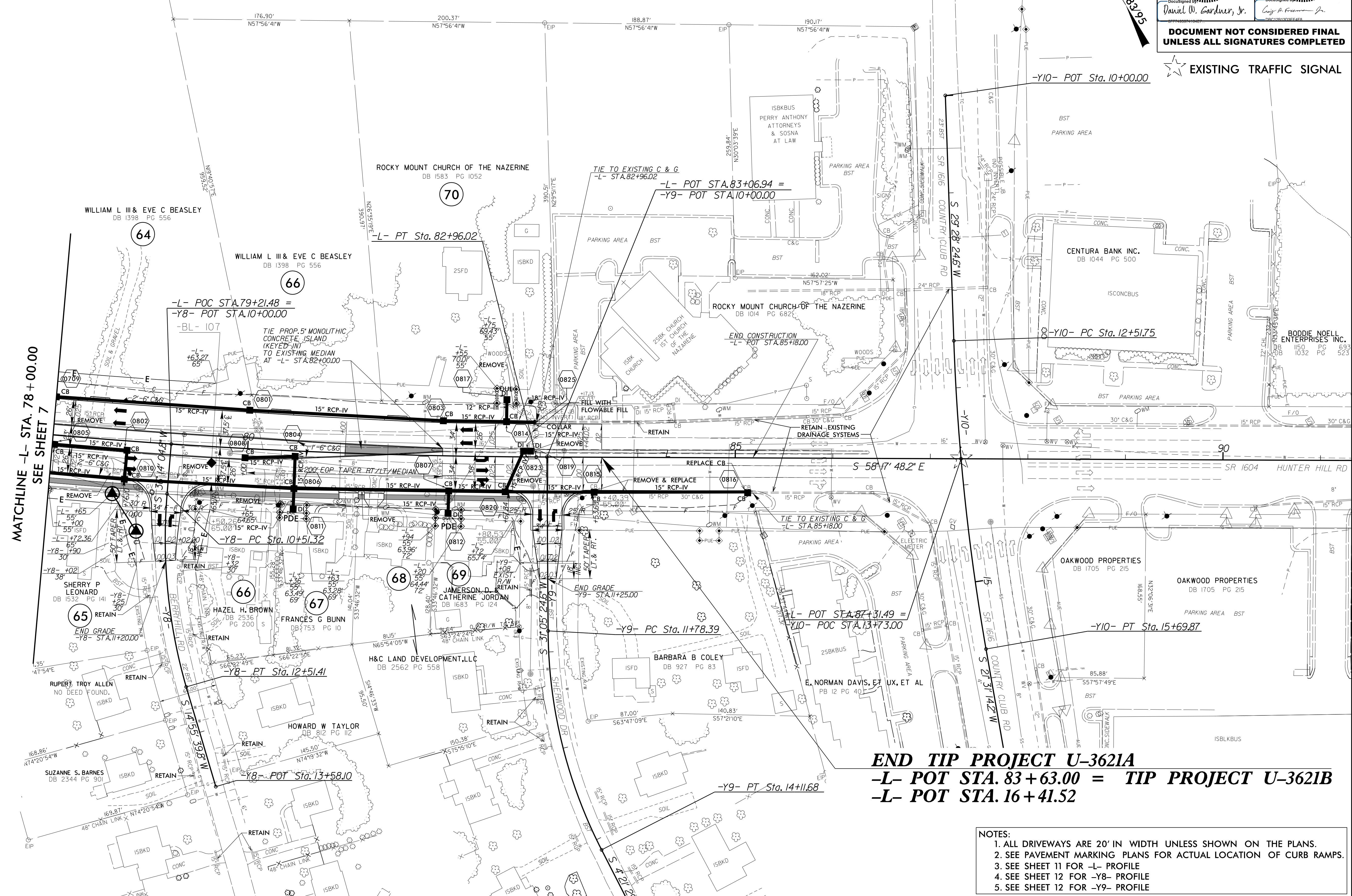
SEPI
ENGINEERING & CONSTRUCTION

1025 Wade Avenue
Raleigh, NC 27605
Tel: 919-789-9977
Fax: 919-789-9591
License: C-2197

PROJECT REFERENCE NO. U-3621A	SHEET NO. 8
RW SHEET NO.	HYDRAULICS ENGINEER
ROADWAY DESIGN ENGINEER	SEAL 33871
4/12/2017	4/10/2017
DocuSign: Daniel W. Gardner, Jr.	DocuSign: Craig P. Freeman, Jr.
DOCUMENT NOT CONSIDERED FINAL UNLESS ALL SIGNATURES COMPLETED	



EXISTING TRAFFIC SIGNAL



MATCHLINE -L- STA. 78 + 00.00
SEE SHEET 7

END TIP PROJECT U-3621A
-L- POT STA. 83 + 63.00 = TIP PROJECT U-3621B
-L- POT STA. 16 + 41.52

- NOTES:
1. ALL DRIVEWAYS ARE 20' IN WIDTH UNLESS SHOWN ON THE PLANS.
 2. SEE PAVEMENT MARKING PLANS FOR ACTUAL LOCATION OF CURB RAMPS.
 3. SEE SHEET 11 FOR -L- PROFILE
 4. SEE SHEET 12 FOR -Y8- PROFILE
 5. SEE SHEET 12 FOR -Y9- PROFILE