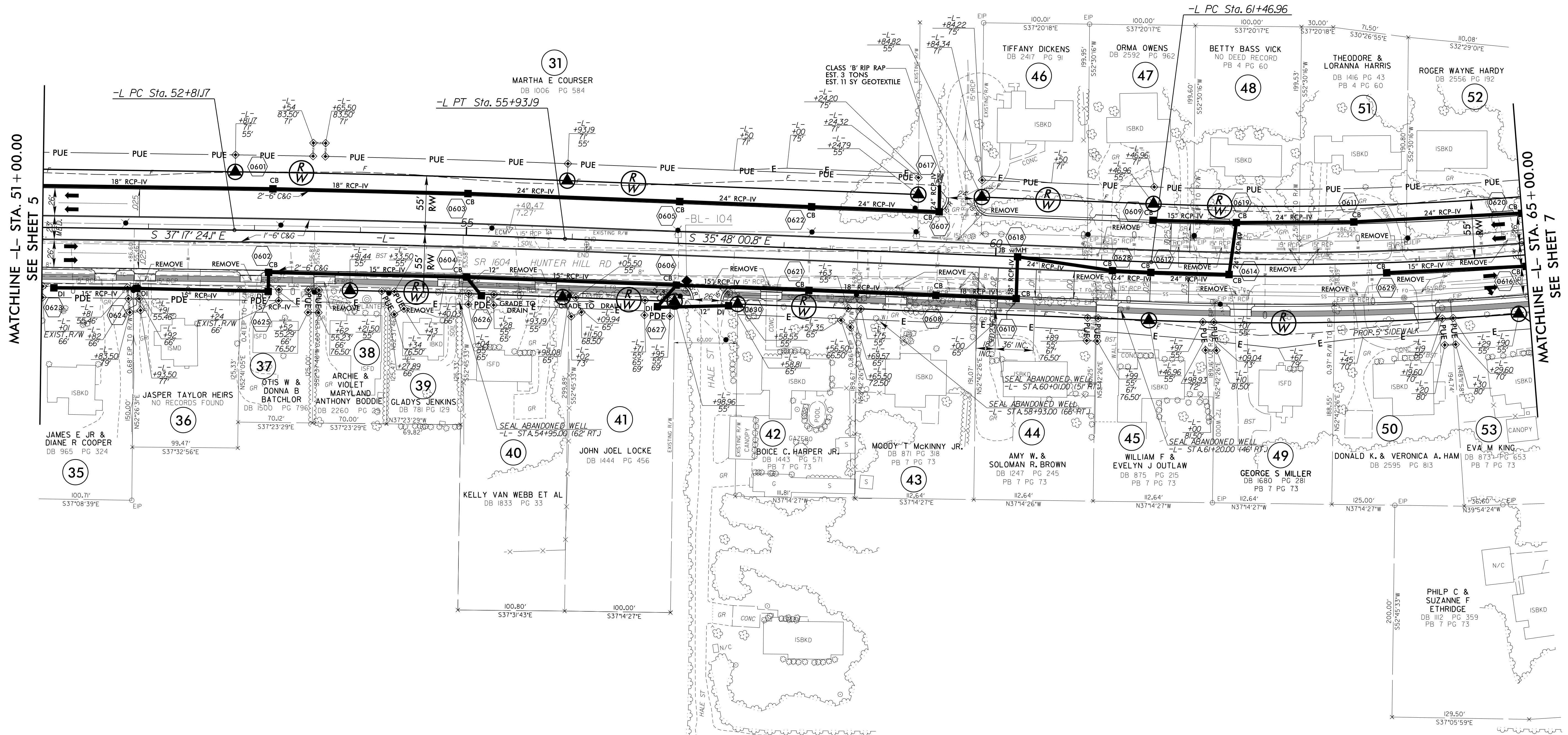
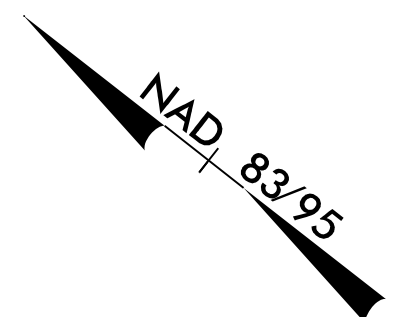


PROJECT REFERENCE NO. U-3621A	SHEET NO. 6
RW SHEET NO.	
ROADWAY DESIGN ENGINEER	HYDRAULICS ENGINEER
<p>DocuSigned by: Daniel W. Gardner, Jr. Daniel W. Gardner, Jr.</p> <p>DocuSigned by: Guy A. Freeman, Jr. Guy A. Freeman, Jr.</p>	
<p>DOCUMENT NOT CONSIDERED FINAL UNLESS ALL SIGNATURES COMPLETED</p>	

-L-	
PI Sta 54+37.19 Δ = 1° 29' 23.3" (RT) D = 0° 28' 38.9" L = 312.02' T = 156.02' R = 12,000.00' SE = SEE PLANS	PI Sta 66+10.12 Δ = 17° 33' 09.6" (LT) D = 1° 54' 35.5" L = 919.06' T = 463.16' R = 3,000.00' SE = SEE PLANS



MATCHLINE -L- STA. 51+00.00
SEE SHEET 5

MATCHLINE -L- STA. 65+00.00
SEE SHEET 7

- NOTES:**
1. ALL DRIVEWAYS ARE 20' IN WIDTH UNLESS SHOWN ON THE PLANS.
 2. SEE PAVEMENT MARKING PLANS FOR ACTUAL LOCATION OF CURB RAMPS.
 3. SEE SHEET 10 FOR -L- PROFILE