

09/08/19

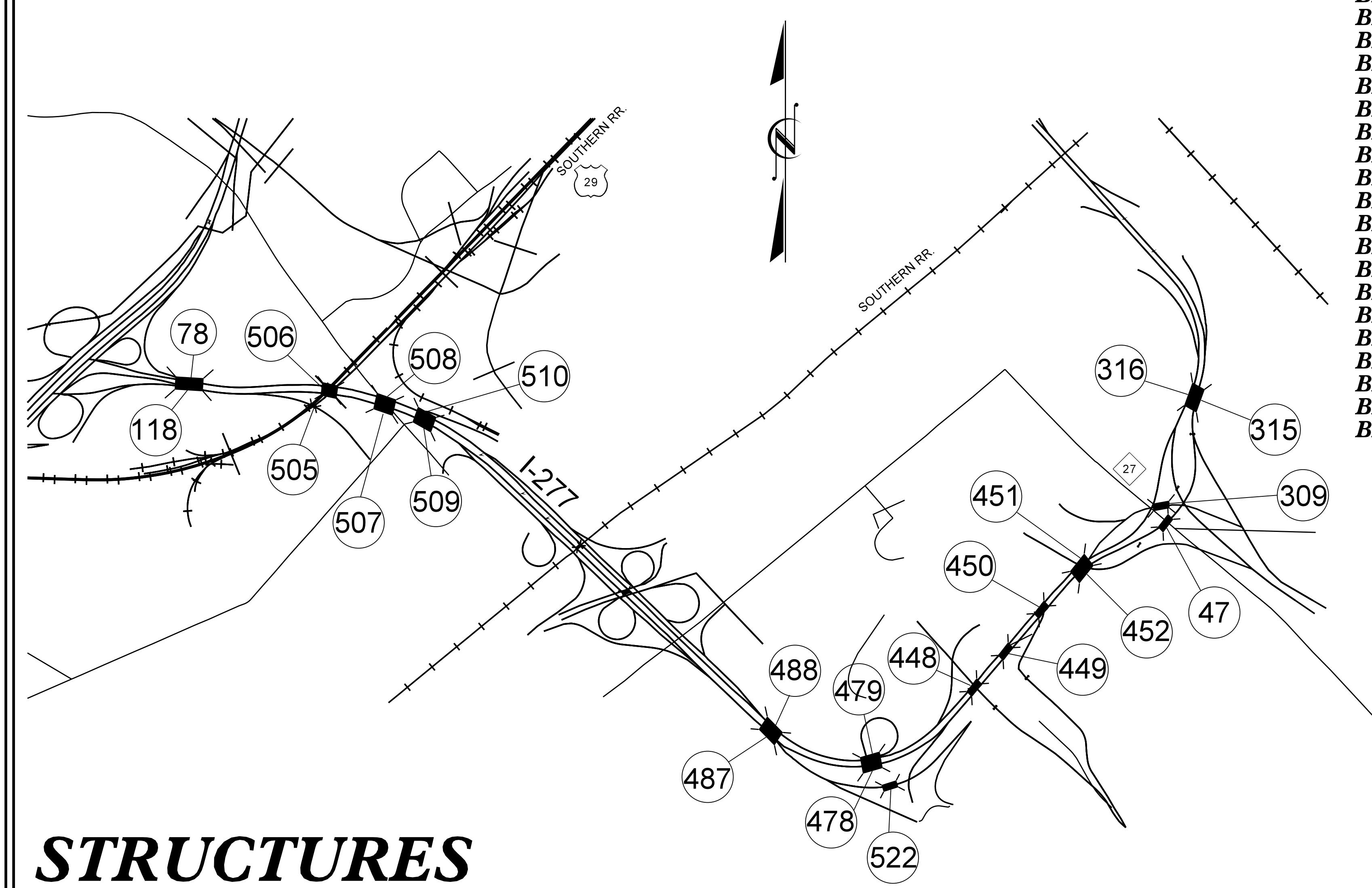
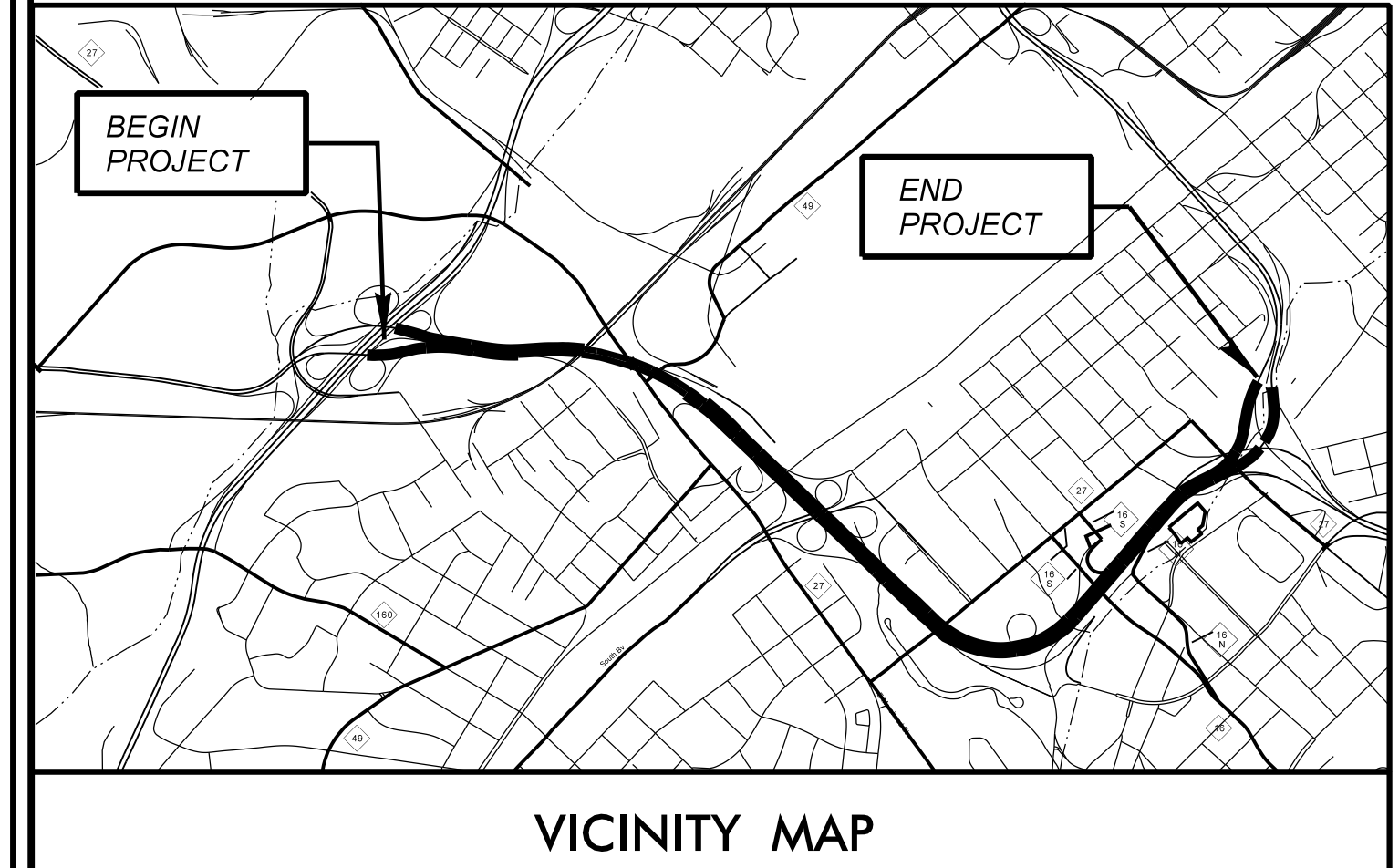
STATE	STATE PROJECT REFERENCE NO.	SHEET NO.	TOTAL SHEETS
N.C.	I-5746A /I-5746B	1	
STATE PROJ. NO.	F.A. PROJ. NO.	DESCRIPTION	
52024.1.1		P.E.	
52024.3.3		CONSTRUCTION	

STATE OF NORTH CAROLINA
DIVISION OF HIGHWAYS

MECKLENBURG COUNTY

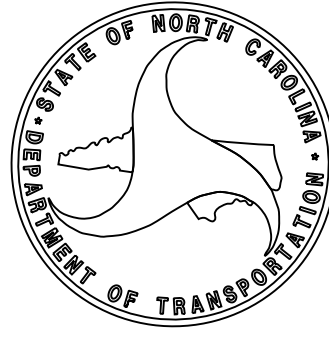
TYPE OF WORK: BRIDGE PRESERVATION - SCARIFICATION, HYDRO-DEMOLITION, DECK REPAIR, LATEX MODIFIED CONCRETE OVERLAY-VERY EARLY STRENGTH, JOINT DEMOLITION, PAINTING STRUCTURAL STEEL SUBSTRUCTURE REPAIR AND BEARING REPAIR.

- LOCATION:**
- BRIDGE #47 ON I-277/US-74 RAMP OVER (NBL) I-277
 - BRIDGE #78 ON I-277 OVER SOUTH CLARKSON STREET
 - BRIDGE #118 ON I-277 OVER SOUTHERN RAILWAY
 - BRIDGE #309 ON US-74 (WBL) RAMP OVER I-277
 - BRIDGE #315 ON I-277 (NBL) OVER 10TH STREET
 - BRIDGE #316 ON I-277 (SBL) OVER 10TH STREET
 - BRIDGE #448 ON I-277 OVER EAST 3RD STREET
 - BRIDGE #449 ON I-277 OVER EAST 4TH STREET
 - BRIDGE #450 ON I-277 OVER ELIZABETH AVE.
 - BRIDGE #451 ON US-74 (WBL) RAMP OVER 5TH STREET
 - BRIDGE #452 ON I-277 OVER 5TH STREET
 - BRIDGE #478 ON I-277 (NBL) OVER EAST STONEWALL STREET
 - BRIDGE #479 ON I-277 (SBL) OVER EAST STONEWALL STREET
 - BRIDGE #487 ON I-277 (NBL) OVER SOUTH McDOWELL STREET
 - BRIDGE #488 ON I-277 (SBL) OVER SOUTH McDOWELL STREET
 - BRIDGE #505 ON I-277 (NBL) OVER SOUTHERN RAILWAY YARD
 - BRIDGE #506 ON I-277 (SBL) OVER SOUTHERN RAILWAY YARD
 - BRIDGE #507 ON I-277 (NBL) BRIDGE OVER MOREHEAD ST.
 - BRIDGE #508 ON I-277 (SBL) BRIDGE OVER MOREHEAD ST.
 - BRIDGE #509 ON I-277 (NBL) FOR BRIDGE OVER MINT STREET
 - BRIDGE #510 ON I-277 (SBL) FOR BRIDGE OVER MINT STREET
 - BRIDGE #522 ON I-277 AND US-74 RAMP OVER STONEWALL STREET



STRUCTURES

DIVISION OF HIGHWAYS
STATE OF NORTH CAROLINA



STATE HIGHWAY DESIGN ENGINEER

DESIGN DATA			
	ADT	YR.	
#47	=	22,000	2013
#78	=	92,000	2013
#118	=	3,000	2013
#309	=	50,000	2012
#315	=	44,000	2012
#316	=	44,000	2012
#448	=	93,000	2013
#449	=	90,000	2013
#450	=	90,000	2013
#451	=	22,500	2013
#452	=	90,000	2013
#478	=	44,500	2012
#479	=	43,250	2012
#487	=	44,500	2012
#488	=	45,500	2012
#505	=	42,000	2012
#506	=	42,000	2012
#507	=	42,000	2012
#508	=	42,000	2012
#509	=	42,000	2012
#510	=	42,000	2012
#522	=	22,250	2012

PROJECT LENGTH			
		MILES	
BRIDGE #47	=	0.03	
BRIDGE #78	=	0.03	
BRIDGE #118	=	0.05	
BRIDGE #309	=	0.14	
BRIDGE #315	=	0.03	
BRIDGE #316	=	0.03	
BRIDGE #448	=	0.03	
BRIDGE #449	=	0.03	
BRIDGE #450	=	0.03	
BRIDGE #451	=	0.03	
BRIDGE #452	=	0.03	
BRIDGE #478	=	0.04	
BRIDGE #479	=	0.04	
BRIDGE #487	=	0.03	
BRIDGE #488	=	0.03	
BRIDGE #505	=	0.05	
BRIDGE #506	=	0.05	
BRIDGE #507	=	0.04	
BRIDGE #508	=	0.04	
BRIDGE #509	=	0.02	
BRIDGE #510	=	0.02	
BRIDGE #522	=	0.06	

DOCUMENT NOT CONSIDERED FINAL
UNLESS ALL SIGNATURES COMPLETED

Prepared for NCDOT in the Office of:
LOUIS BERGER
1001 Wade Avenue, Suite 400
Raleigh, North Carolina 27605
License No.: F-0840

2012 STANDARD SPECIFICATIONS

LETTING DATE:
JUNE 20, 2017

DEAN HATFIELD, P.E.
PROJECT ENGINEER

FARZIN ASEFNIA, P.E.
PROJECT DESIGN ENGINEER

Seal of the State of North Carolina Professional Engineer, Farzin Asefnia, License No. F-0840, Seal 20103, dated 5/3/2017.

FARZIN ASEFNIA, P.E.
PROJECT DESIGN ENGINEER

PROJECT NO.: I-5746A /I-5746B
CONTRACT: C203867

5/3/2017 8:16:52 AM G:\Project\1008-1016-NCDOT Bridge Rehabilitation\Projects\Final\DCN\Revised Plans_042617\400_001_I5746A_I5746B_SMU_TSH.dgn