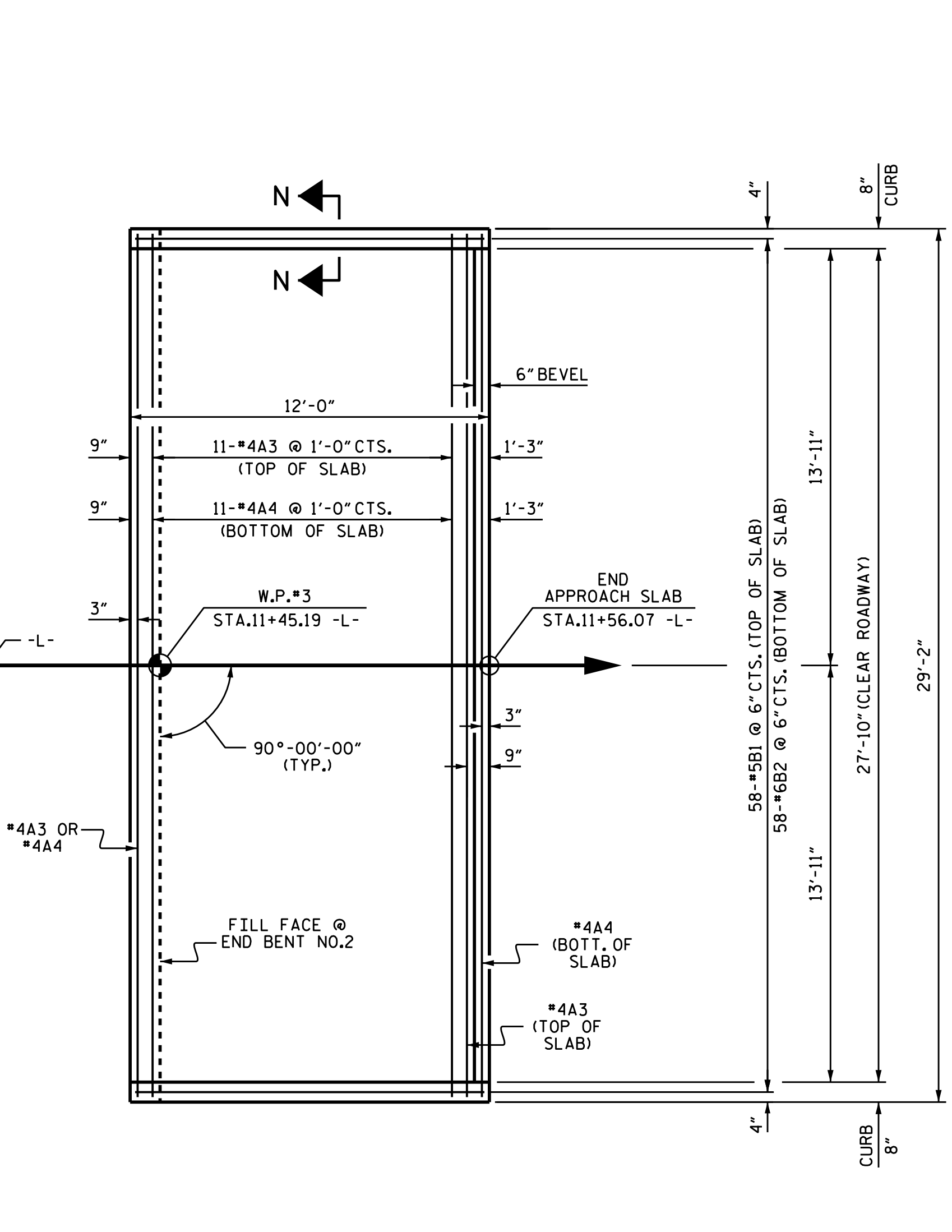


PLAN @ END BENT NO. 1

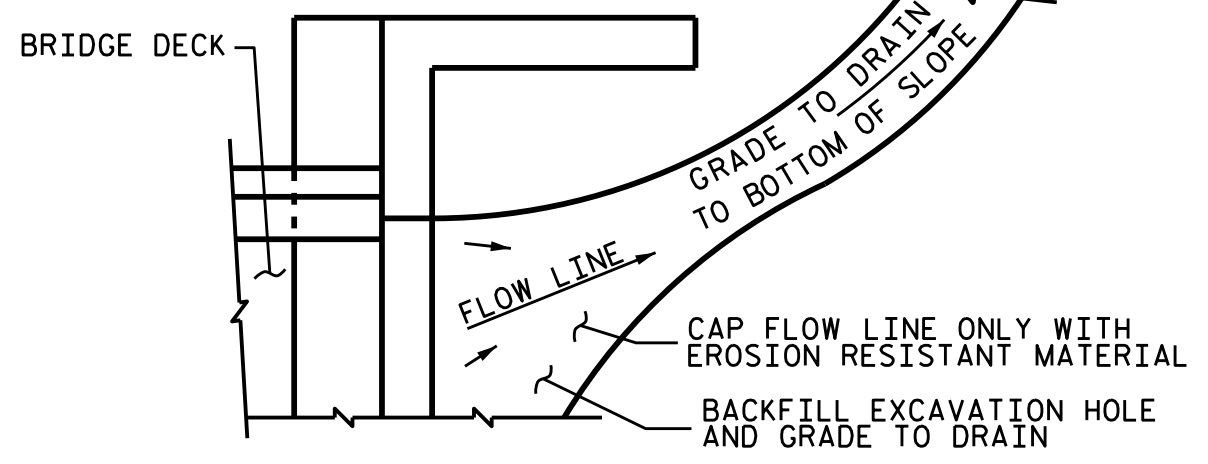


PLAN @ END BENT NO. 2

NOTES

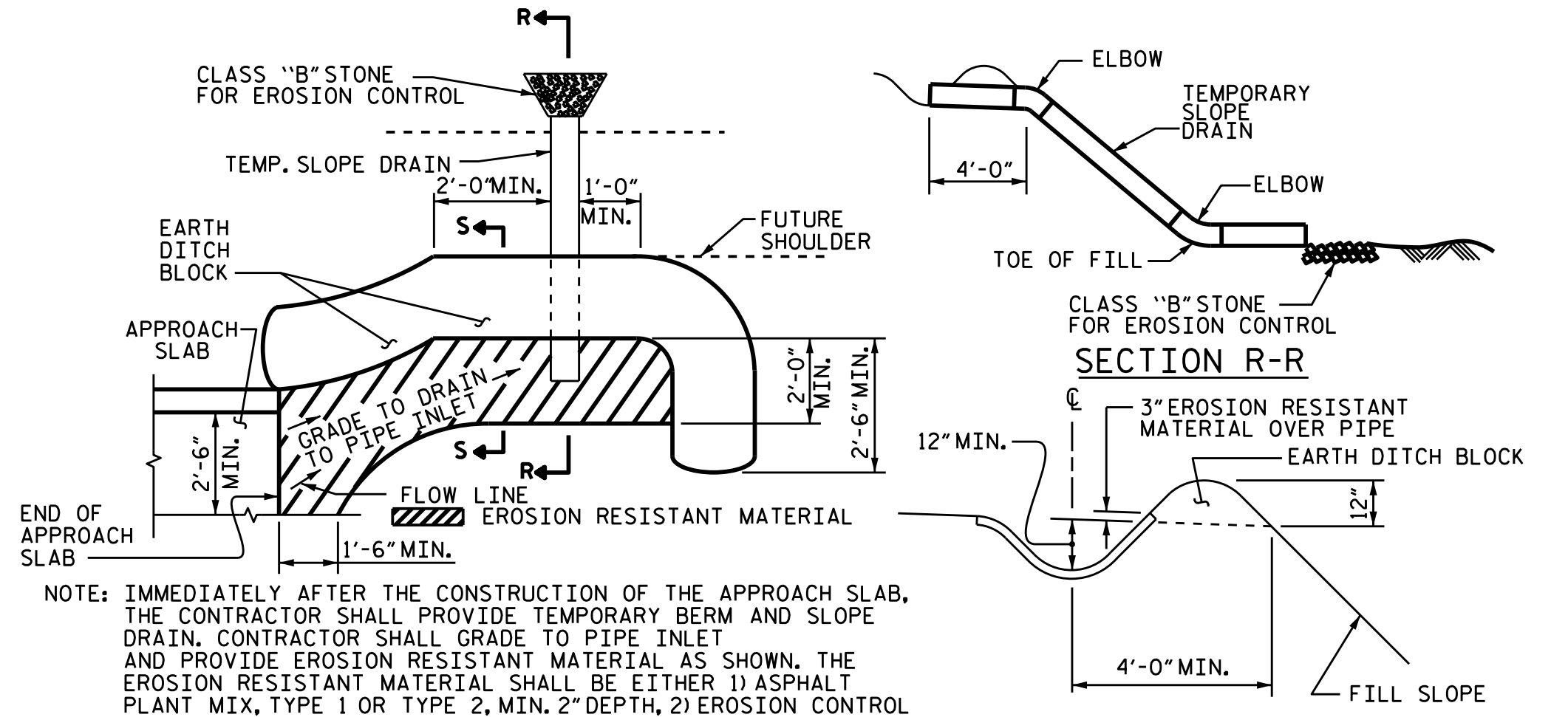
FOR BRIDGE APPROACH FILL INCLUDING GEOTEXTILE, 4" Ø DRAINAGE PIPE, AND #78M STONE BACKFILL, SEE ROADWAY PLANS.
 GEOTEXTILE SHALL BE TYPE 1 IN ACCORDANCE WITH THE STANDARD SPECIFICATIONS SECTION 1056.
 #78M STONE BACKFILL (CLASS V SELECT MATERIAL) SHALL BE IN ACCORDANCE WITH STANDARD SPECIFICATIONS SECTION 1016.
 #78M STONE BACKFILL IS TO BE CONTINUOUS ALONG FILL FACE OF BACKWALL FROM OUTSIDE EDGE TO OUTSIDE EDGE OF APPROACH SLAB.
 FOR THE 4" Ø DRAINAGE PIPE OUTLET(S), SEE ROADWAY STANDARD DRAWINGS.
 AREA BETWEEN THE WINGWALL AND APPROACH SLAB SHALL BE GRADED TO DRAIN THE WATER AWAY FROM THE FILL FACE OF THE BRIDGE AND SHALL BE PAVED, SEE ROADWAY PLANS.

APPROACH SLAB GROOVING IS NOT REQUIRED.



NOTE: IF THE APPROACH SLAB IS NOT CONSTRUCTED IMMEDIATELY AFTER THE BACKFILLING OF THE END BENT EXCAVATION, GRADE TO DRAIN TO THE BOTTOM OF THE SLOPE AND PROVIDE EROSION RESISTANT MATERIAL, SUCH AS FIBERGLASS ROVING OR AS DIRECTED BY THE ENGINEER TO PREVENT SOIL EROSION AND TO PROTECT THE AREA ADJACENT TO THE STRUCTURE. THE CONTRACTOR WILL BE REQUIRED TO REMOVE THESE MATERIALS PRIOR TO CONSTRUCTION OF THE APPROACH SLAB.

TEMPORARY DRAINAGE DETAIL

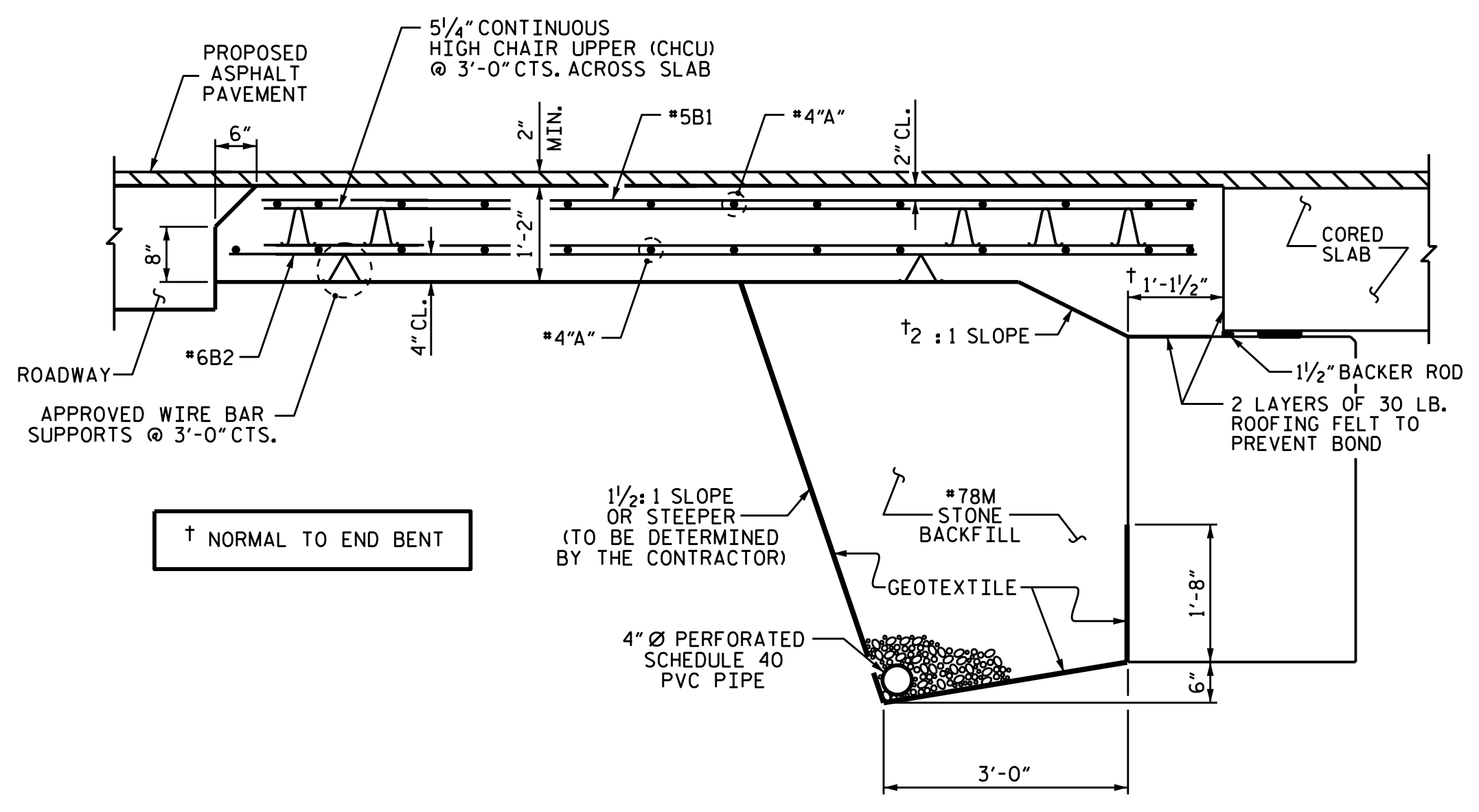


NOTE: IMMEDIATELY AFTER THE CONSTRUCTION OF THE APPROACH SLAB, THE CONTRACTOR SHALL PROVIDE TEMPORARY BERM AND SLOPE DRAIN. CONTRACTOR SHALL GRADE TO PIPE INLET AND PROVIDE EROSION RESISTANT MATERIAL AS SHOWN. THE EROSION RESISTANT MATERIAL SHALL BE EITHER 1) ASPHALT PLANT MIX, TYPE 1 OR TYPE 2, MIN. 2" DEPTH, 2) EROSION CONTROL MAT, OR 3) CONCRETE, AS DIRECTED BY THE ENGINEER. THE SLOPE DRAIN SHALL CONSIST OF A NON-PERFORATED TEMPORARY DRAINAGE PIPE, 12 INCHES IN DIAMETER.

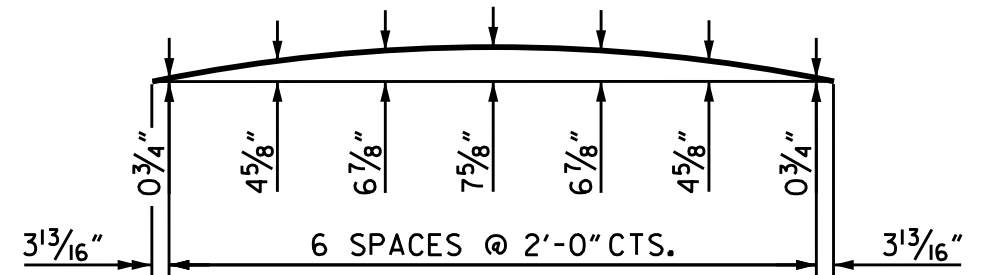
PLAN VIEW

TEMPORARY BERM AND SLOPE DRAIN DETAILS

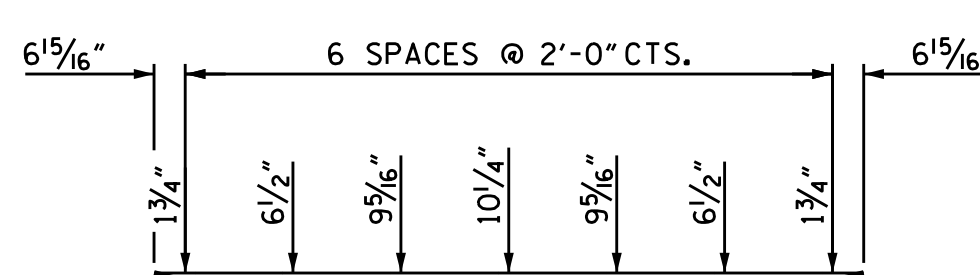
(TO BE USED WHEN SHOULDER BERM GUTTER IS REQUIRED)



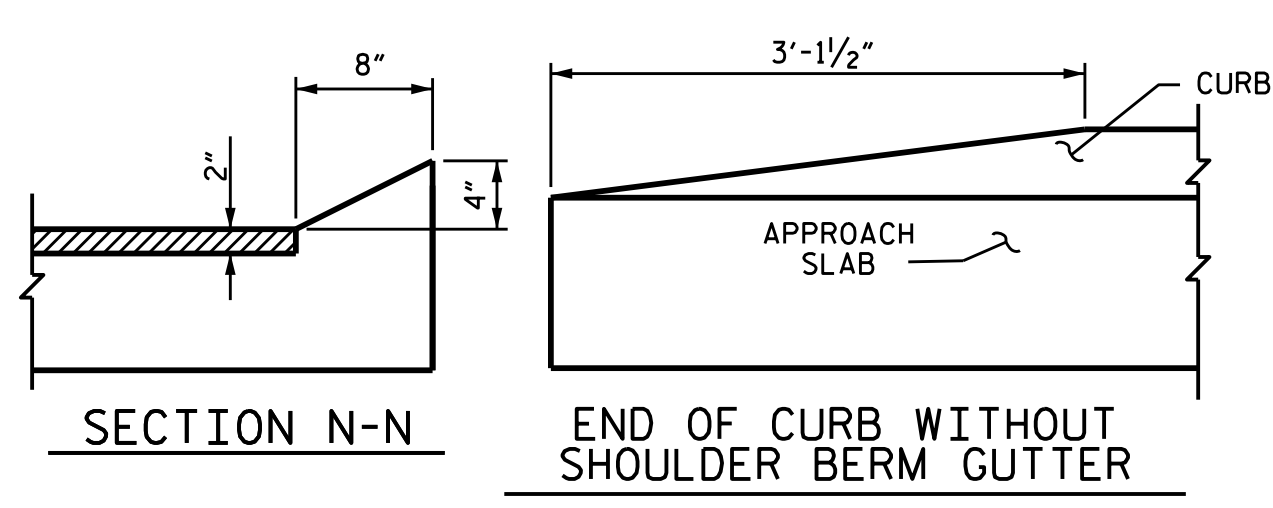
SECTION THRU SLAB



ARC OFFSETS - RIGHT SIDE AT END BENT NO. 1 ONLY



ARC OFFSETS - LEFT SIDE AT END BENT NO. 1 ONLY

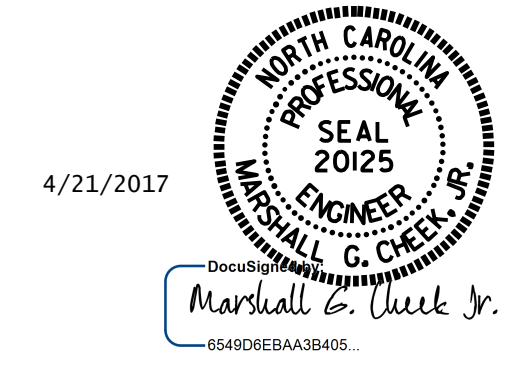


SECTION N-N

END OF CURB WITHOUT SHOULDER BERM GUTTER

CURB DETAILS

SPlice LENGTHS		
BAR SIZE	EPOXY COATED	UNCOATED
#4	2'-0"	1'-9"
#5	2'-6"	2'-2"
#6	3'-10"	2'-7"



BILL OF MATERIAL						
APPROACH SLAB AT EB NO. 1						
BAR	NO.	SIZE	TYPE	LENGTH	WEIGHT	
*A1	26	#4	STR	20'-0"	347	
A2	26	#4	STR	19'-10"	344	
*B1	58	#5	STR	11'-2"	676	
B2	58	#6	STR	11'-8"	1016	
*B3	9	#5	STR	6'-8"	63	
B4	9	#6	STR	6'-8"	90	
*B5	7	#5	STR	7'-7"	55	
B6	7	#6	STR	7'-7"	80	
REINFORCING STEEL					LBS.	1530
*EPOXY COATED REINFORCING STEEL					LBS.	1141
CLASS AA CONCRETE					C. Y.	18.8
APPROACH SLAB AT EB NO. 2						
BAR	NO.	SIZE	TYPE	LENGTH	WEIGHT	
*A3	13	#4	STR	28'-10"	250	
A4	13	#4	STR	28'-10"	250	
*B1	58	#5	STR	11'-2"	676	
B2	58	#6	STR	11'-8"	1016	
REINFORCING STEEL					LBS.	1266
*EPOXY COATED REINFORCING STEEL					LBS.	926
CLASS AA CONCRETE					C. Y.	16.7

PROJECT NO. B-5159
 JACKSON COUNTY
 STATION: 10+91.50 -L-

STATE OF NORTH CAROLINA
 DEPARTMENT OF TRANSPORTATION
 RALEIGH
 BRIDGE APPROACH SLAB FOR PRESTRESSED CONCRETE CORED SLAB UNIT (SUB-REGIONAL TIER)
 90° SKEW

REVISIONS						SHEET NO.	
NO.	BY:	DATE:	NO.	BY:	DATE:	S-17	
1			3			TOTAL SHEETS	
2			4			17	

DOCUMENT NOT CONSIDERED FINAL UNLESS ALL SIGNATURES COMPLETED

ASSEMBLED BY: C. KOUCHEKI DATE: 01/2017
 CHECKED BY: H.A. LOCKLEAR DATE: 01/2017
 DRAWN BY: SHS/MAA 5-09
 CHECKED BY: BCH 5-09
 REV. 9-15 MAA/TMG