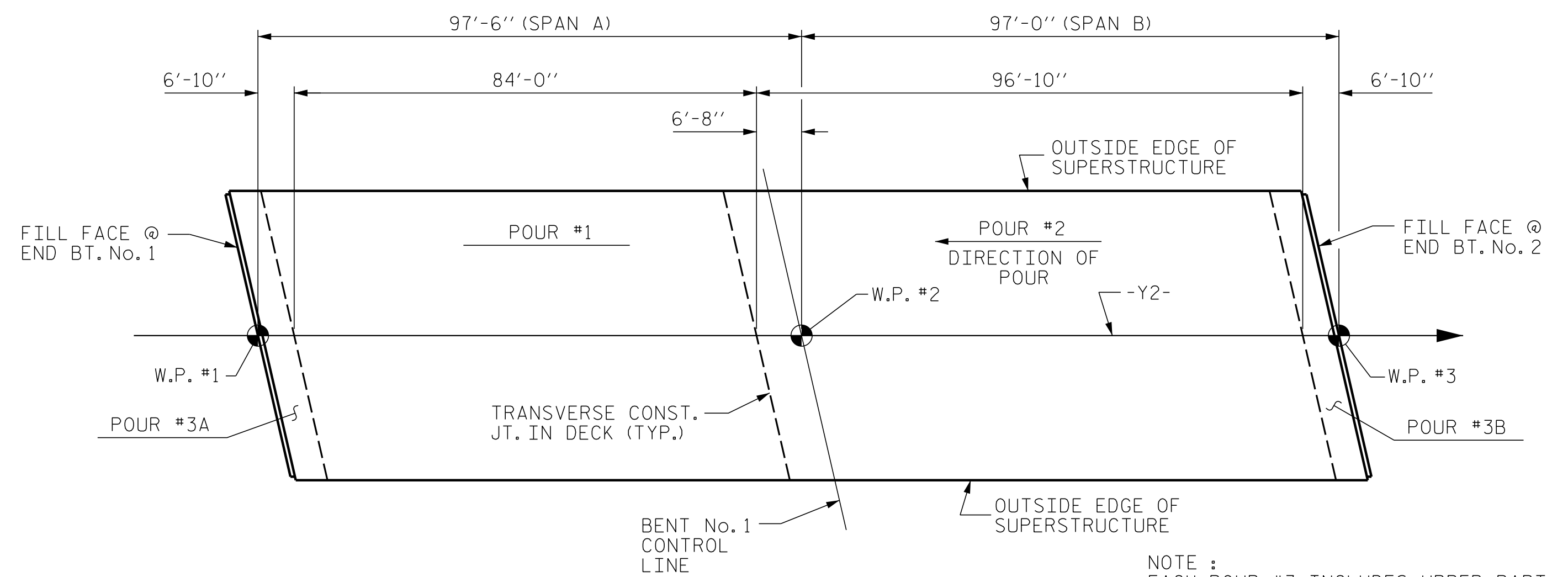


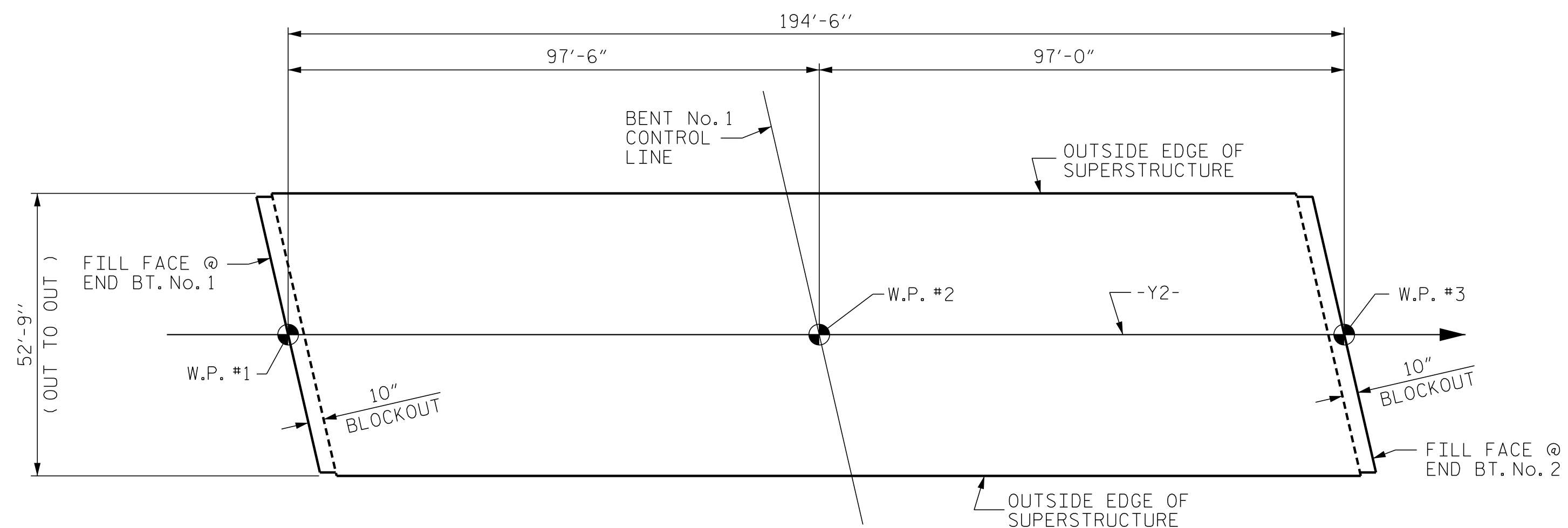
OPTIONAL DECK POUR DETAIL

POUR ② SHALL NOT BE STARTED UNTIL BOTH ADJACENT POUR ① REACH A MINIMUM OF 3,000 PSI



CONCRETE DECK POUR DETAIL

NOTE: EACH POUR #3 INCLUDES UPPER PART OF THE INTEGRAL END BENT.



LAYOUT FOR COMPUTING AREA REINFORCED CONCRETE DECK SLAB (SQ. FT. = 10,260)

REINFORCING BAR SCHEDULE

SPAN "A-B"

BAR	No.	SIZE	TYPE	LENGTH	WEIGHT
*A1	361	#5	STR	52'-5"	19,736
A2	361	#5	STR	52'-5"	19,736
*A101	2	#5	STR	51'-0"	106
*A102	2	#5	STR	48'-10"	102
*A103	2	#5	STR	46'-8"	97
*A104	2	#5	STR	44'-6"	93
*A105	2	#5	STR	42'-4"	88
*A106	2	#5	STR	40'-2"	84
*A107	2	#5	STR	38'-0"	79
*A108	2	#5	STR	35'-10"	75
*A109	2	#5	STR	33'-8"	70
*A110	2	#5	STR	31'-6"	66
*A111	2	#5	STR	29'-4"	61
*A112	2	#5	STR	27'-2"	57
*A113	2	#5	STR	25'-0"	52
*A114	2	#5	STR	22'-10"	48
*A115	2	#5	STR	20'-8"	43
*A116	2	#5	STR	18'-5"	38
*A117	2	#5	STR	16'-3"	34
*A118	2	#5	STR	14'-1"	29
*A119	2	#5	STR	11'-11"	25
*A120	2	#5	STR	9'-9"	20
*A121	2	#5	STR	7'-7"	16
*A122	2	#5	STR	5'-5"	11
*A123	2	#5	STR	3'-3"	7

A201	2	#5	STR	51'-0"	106
A202	2	#5	STR	48'-10"	102
A203	2	#5	STR	46'-8"	97
A204	2	#5	STR	44'-6"	93
A205	2	#5	STR	42'-4"	88
A206	2	#5	STR	40'-2"	84
A207	2	#5	STR	38'-0"	79
A208	2	#5	STR	35'-10"	75
A209	2	#5	STR	33'-8"	70
A210	2	#5	STR	31'-6"	66
A211	2	#5	STR	29'-4"	61
A212	2	#5	STR	27'-2"	57
A213	2	#5	STR	25'-0"	52
A214	2	#5	STR	22'-10"	48
A215	2	#5	STR	20'-8"	43
A216	2	#5	STR	18'-5"	38
A217	2	#5	STR	16'-3"	34
A218	2	#5	STR	14'-1"	29
A219	2	#5	STR	11'-11"	25
A220	2	#5	STR	9'-9"	20
A221	2	#5	STR	7'-7"	16
A222	2	#5	STR	5'-5"	11
A223	2	#5	STR	3'-3"	7

*B1	138	#7	STR	19'-6"	5500
*B2	140	#4	STR	24'-5"	2283
*B3	70	#7	STR	36'-10"	5270
*B4	34	#7	STR	29'-3"	2033
B5	260	#5	STR	49'-9"	13491
*B6	14	#4	STR	29'-3"	274

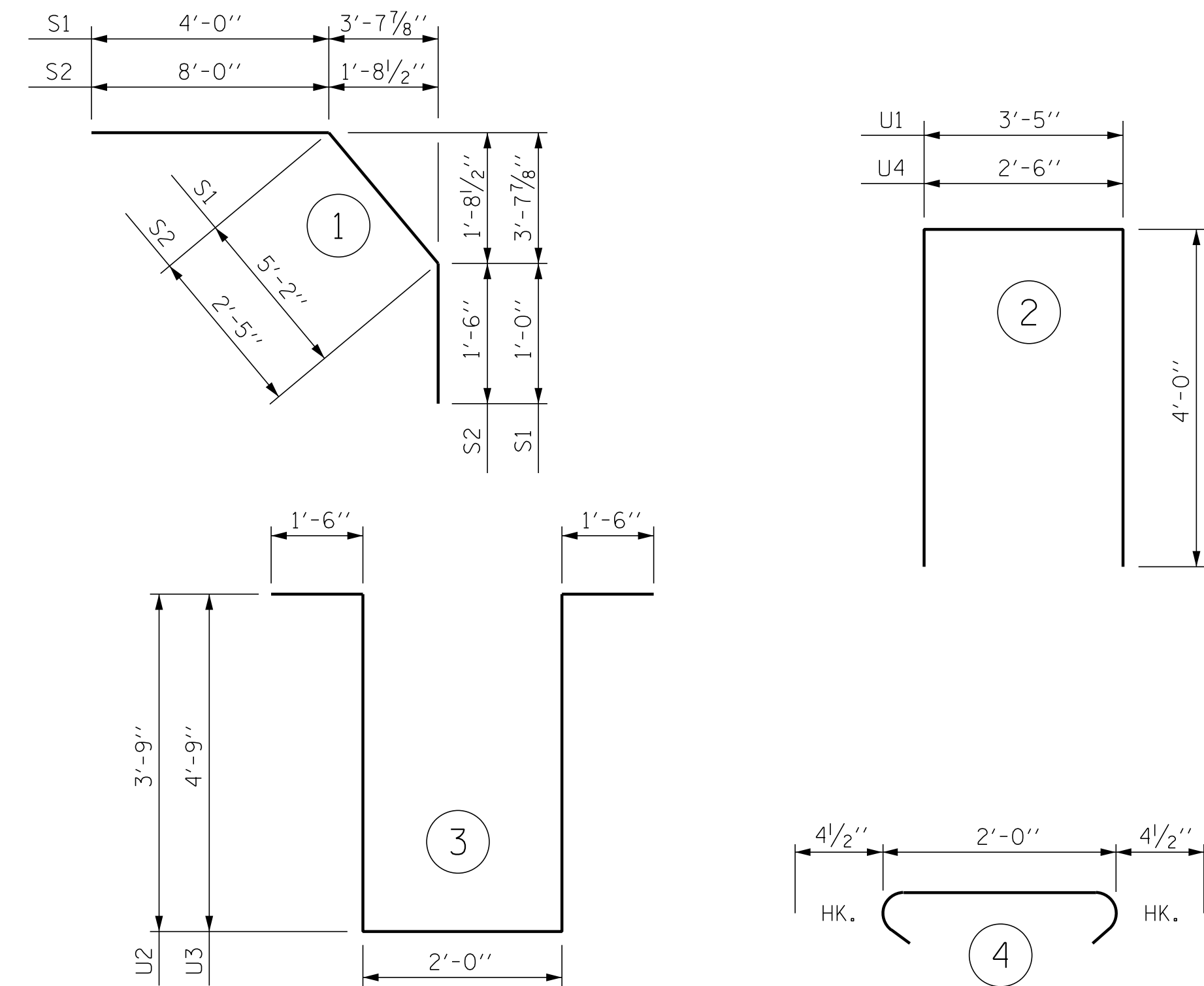
K1	20	#4	STR	26'-10"	358
K2	10	#4	STR	7'-3"	48
K3	20	#4	STR	8'-3"	110
K4	10	#4	STR	7'-9"	52
K5	10	#4	STR	6'-9"	45
K6	4	#4	STR	2'-3"	6
K7	8	#4	STR	2'-6"	13
K8	8	#4	STR	3'-0"	16
K9	10	#4	STR	25'-2"	168
K10	10	#4	STR	5'-6"	37
K11	10	#4	STR	7'-3"	48
K12	30	#4	STR	7'-8"	154

*S1	78	#4	1	10'-2"	530
*S2	78	#4	1	11'-11"	621
S3	150	#4	4	2'-9"	276
U1	78	#4	2	11'-5"	595
U2	10	#4	3	12'-6"	84
U3	30	#4	3	14'-6"	291
U4	4	#4	2	10'-6"	28

REINFORCING STEEL 36,857 LBS.
* EPOXY COATED REINFORCING STEEL 37,548 LBS.

* THESE BARS ARE EPOXY COATED

BAR TYPES



ALL BAR DIMENSIONS ARE OUT TO OUT

SUPERSTRUCTURE BILL OF MATERIAL

	CLASS AA CONCRETE (CU. YDS.)	REINFORCING STEEL (LBS.)	* EPOXY COATED REINFORCING STEEL (LBS.)
TOTALS **	396.1	36,857	37,548

** QUANTITIES FOR CONCRETE BARRIER RAIL ARE NOT INCLUDED

GROOVING BRIDGE FLOORS

APPROACH SLABS	1,132 SQ.FT.
BRIDGE DECK	7,631 SQ.FT.
TOTAL	8,763 SQ.FT.

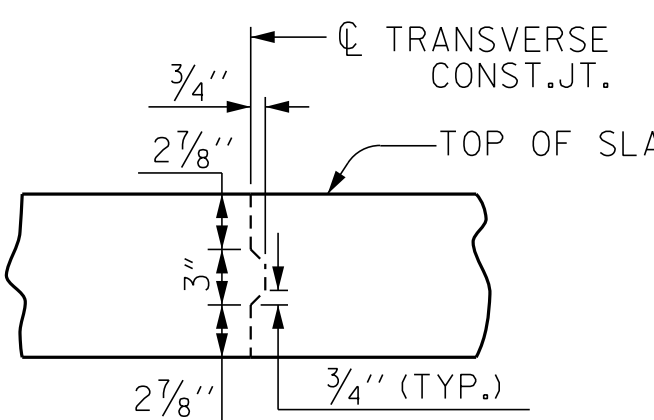
SUPERSTRUCTURE REINFORCING STEEL LENGTHS ARE BASED ON THE FOLLOWING MINIMUM SPLICE LENGTHS

BAR SIZE	SUPERSTRUCTURE EXCEPT APPROACH SLABS, PARAPET, AND BARRIER RAIL		APPROACH SLABS		PARAPET AND BARRIER RAIL
	EPOXY COATED	UNCOATED	EPOXY COATED	UNCOATED	
#4	2'-0"	1'-9"	2'-0"	1'-9"	2'-9"
#5	2'-6"	2'-2"	2'-6"	2'-2"	3'-5"
#6	3'-0"	2'-7"	3'-10"	2'-7"	4'-4"
#7	5'-3"	3'-6"			
#8	6'-10"	4'-7"			

CLASS AA CONCRETE BREAKDOWN

POUR #1	138.6	CY
POUR #2	176.5	CY
POUR #3A	40.5	CY
POUR #3B	40.5	CY
CLASS AA CONCRETE BREAKDOWN TOTAL	396.1	CY

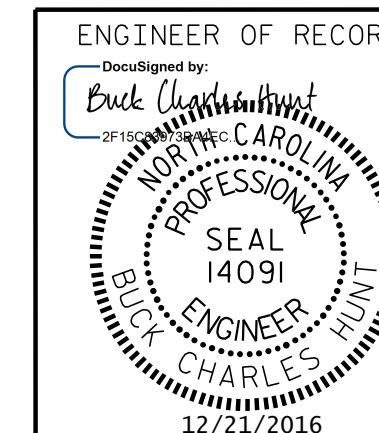
PROJECT NO. R-5311A
HERTFORD COUNTY
STATION: 50+99.00 -Y2-



TRANSVERSE CONSTRUCTION DETAIL

NOTE: SLAB REINFORCING STEEL SHALL BE CONTINUOUS THRU JOINT

DOCUMENT NOT CONSIDERED FINAL UNLESS ALL SIGNATURES COMPLETED



STATE OF NORTH CAROLINA
DEPARTMENT OF TRANSPORTATION
RALEIGH

SUPERSTRUCTURE BILL OF MATERIAL

REVISIONS

NO.	BY:	DATE:	NO.	BY:	DATE:
1			3		
2			4		

SHEET NO. S02-19
TOTAL SHEETS 61

DRAWN BY: D. HODGE DATE: 3/16
CHECKED BY: G.M. GILLAND DATE: 3/16