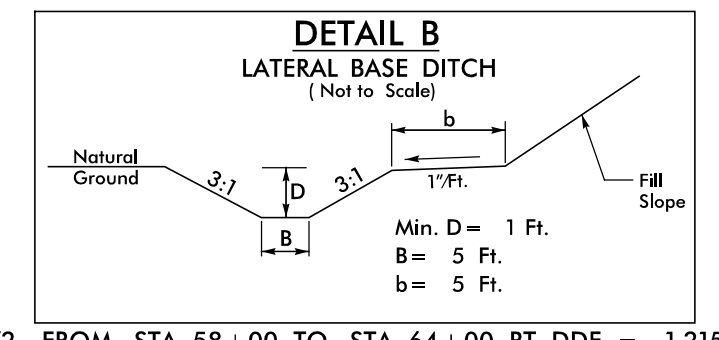
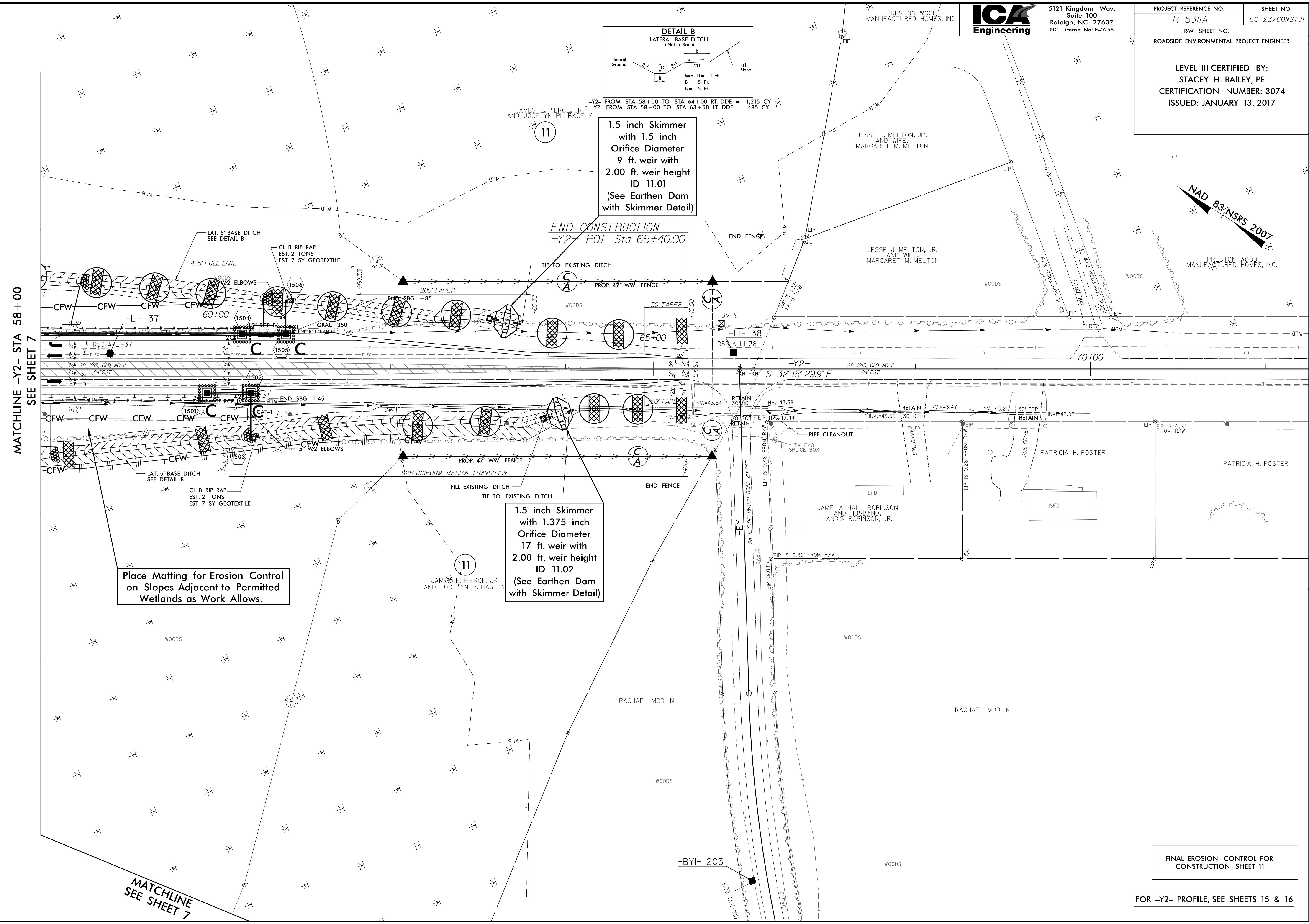




5121 Kingdom Way,
Suite 100
Raleigh, NC 27607
NC License No: F-0258

PROJECT REFERENCE NO.	SHEET NO.
R-5311A	EC-23/CONST.11
RW SHEET NO.	
ROADSIDE ENVIRONMENTAL PROJECT ENGINEER	
LEVEL III CERTIFIED BY: STACEY H. BAILEY, PE CERTIFICATION NUMBER: 3074 ISSUED: JANUARY 13, 2017	

REVISIONS
 R/W REV. (10/31/16) - ADDED PARCEL #11 LABEL AND CHANGED EXISTING C/A TO PROPOSED C/A ON PARCEL #11. DCS



-Y2- FROM STA. 58+00 TO STA. 64+00 RT. DDE = 1,215 CY
 -Y2- FROM STA. 58+00 TO STA. 63+50 LT. DDE = 485 CY

**1.5 inch Skimmer
with 1.5 inch
Orifice Diameter
9 ft. weir with
2.00 ft. weir height
ID 11.01
(See Earthen Dam
with Skimmer Detail)**

**END CONSTRUCTION
-Y2- POT Sta 65+40.00**

**1.5 inch Skimmer
with 1.375 inch
Orifice Diameter
17 ft. weir with
2.00 ft. weir height
ID 11.02
(See Earthen Dam
with Skimmer Detail)**

**Place Matting for Erosion Control
on Slopes Adjacent to Permitted
Wetlands as Work Allows.**

FINAL EROSION CONTROL FOR CONSTRUCTION SHEET 11

FOR -Y2- PROFILE, SEE SHEETS 15 & 16

MATCHLINE -Y2- STA 58+00 SEE SHEET 7

MATCHLINE SEE SHEET 7

1/3/2017
 H5311A_hwd_erosion_control.psh.11.dgn
 ICA ENGINEERING, INC.