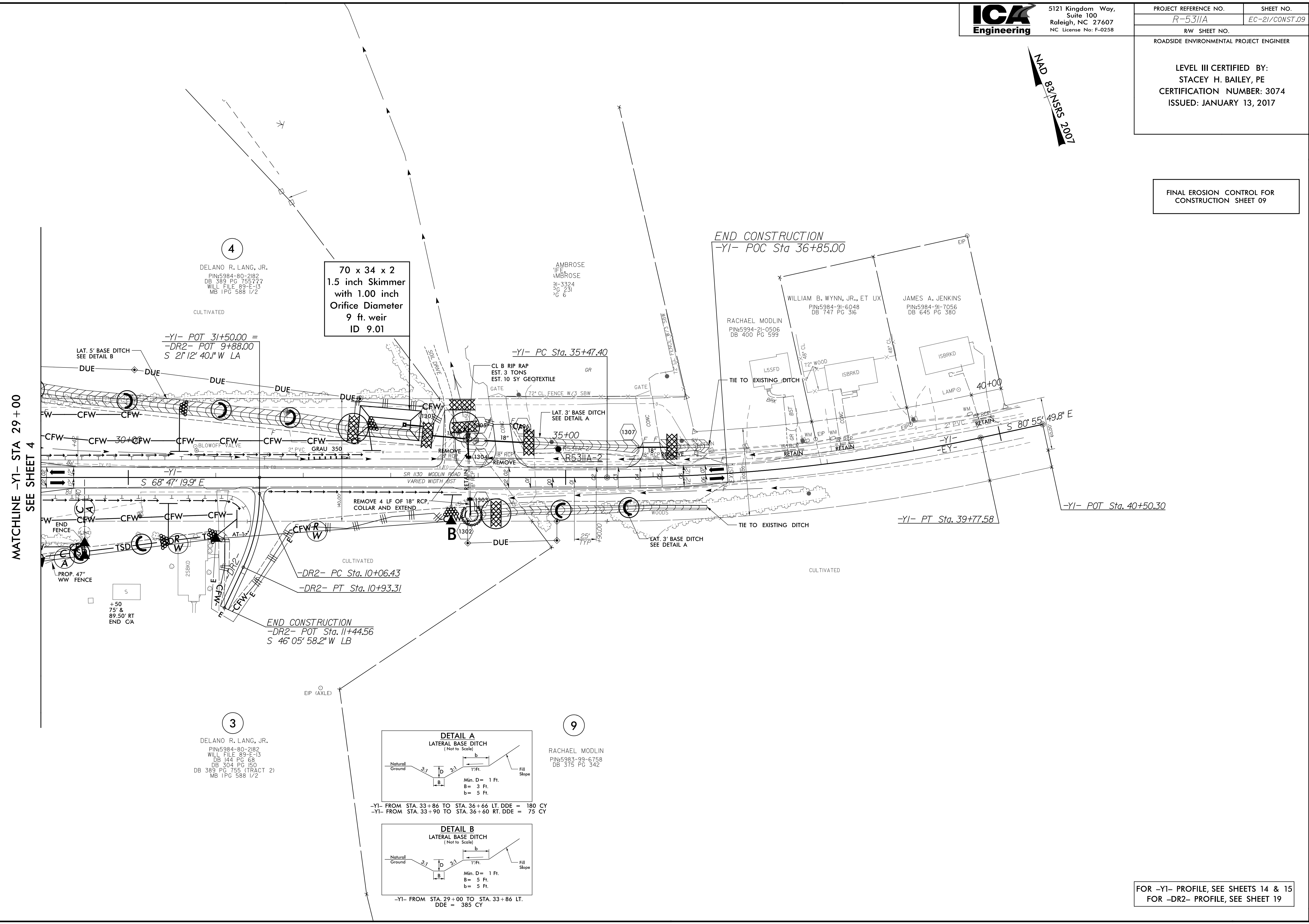


8/17/99

REVISIONS



MATCHLINE -Y1- STA 29+00
SEE SHEET 4

4
DELANO R. LANG, JR.
PIN:5984-80-2182
DB 389 PG 755/277
WILL FILE 89-E-13
MB 1PG 588 1/2

70 x 34 x 2
1.5 inch Skimmer
with 1.00 inch
Orifice Diameter
9 ft weir
ID 9.01

AMBROSE
1/16
1/16
31-3324
56 231
26 6

END CONSTRUCTION
-Y1- POC Sta 36+85.00

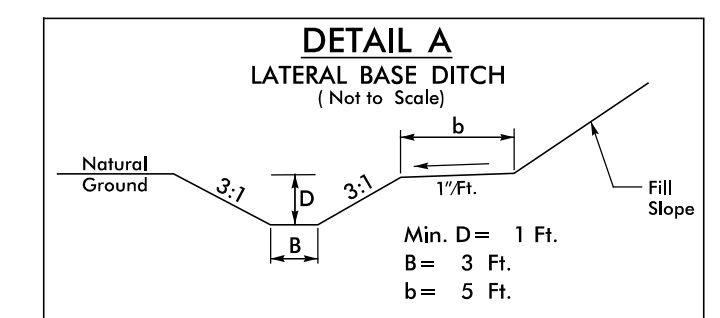
WILLIAM B. WYNN, JR., ET UX
PIN:5984-91-6048
DB 747 PG 316

JAMES A. JENKINS
PIN:5984-91-7056
DB 645 PG 380

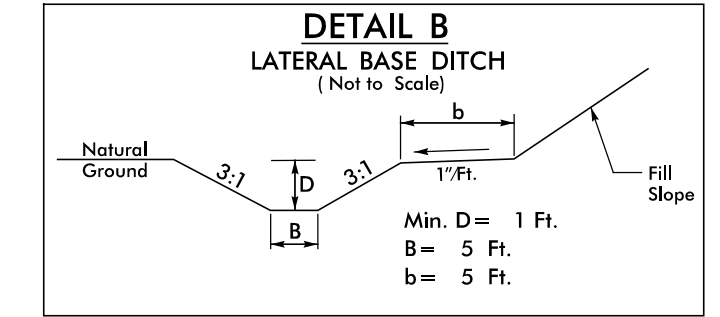
RACHAEL MODLIN
PIN:5994-21-0506
DB 400 PG 599

3
DELANO R. LANG, JR.
PIN:5984-80-2182
WILL FILE 89-E-13
DB 144 PG 68
DB 304 PG 150
DB 389 PG 755 (TRACT 2)
MB 1PG 588 1/2

9
RACHAEL MODLIN
PIN:5983-99-6758
DB 375 PG 342



-Y1- FROM STA. 33+86 TO STA. 36+66 LT. DDE = 180 CY
-Y1- FROM STA. 33+90 TO STA. 36+60 RT. DDE = 75 CY



-Y1- FROM STA. 29+00 TO STA. 33+86 LT.
DDE = 385 CY

FOR -Y1- PROFILE, SEE SHEETS 14 & 15
FOR -DR2- PROFILE, SEE SHEET 19

1/3/2017
145311A_hurd_erosion_control.psh.09.dgn
ICA ENGINEERING, INC.