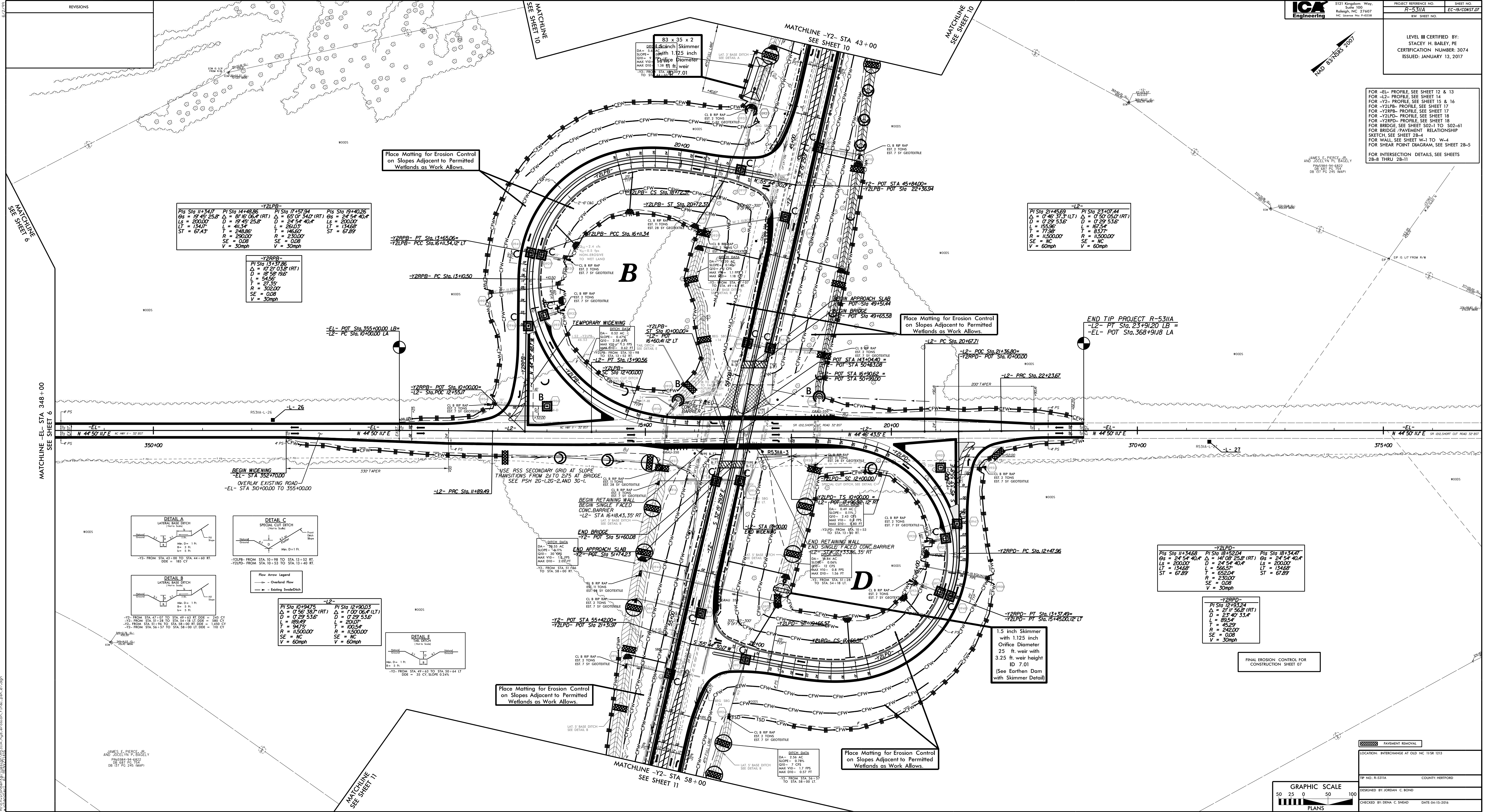


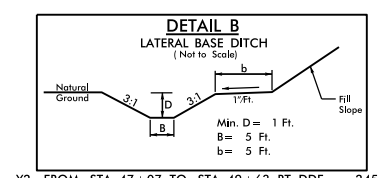
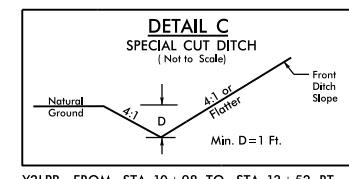
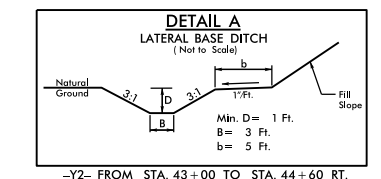
FOR -EL- PROFILE, SEE SHEET 12 & 13
FOR -L2- PROFILE, SEE SHEET 14
FOR -Y2LPB- PROFILE, SEE SHEET 15 & 16
FOR -Y2RPB- PROFILE, SEE SHEET 17
FOR -Y2LPD- PROFILE, SEE SHEET 18
FOR -Y2RPD- PROFILE, SEE SHEET 18
FOR BRIDGE, SEE SHEET 502-1 TO 502-61
FOR BRIDGE /PAVEMENT RELATIONSHIP SKETCH, SEE SHEET 2B-4
FOR WALL, SEE SHEET W-1 TO W-4
FOR SHEAR POINT DIAGRAM, SEE SHEET 2B-5
FOR INTERSECTION DETAILS, SEE SHEETS 2B-8 THRU 2B-11



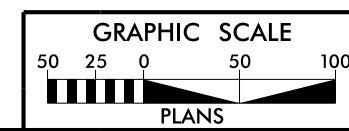
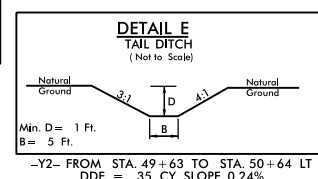
-Y2LPB-			
Pis Sta 11+34.7	Pi Sta 14+48.86	Pi Sta 17+57.94	Pis Sta 19+40.26
Os = 19' 45" 25.8"	Δ = 81' 16" 06.4" (RT)	Δ = 65' 0" 34.0" (RT)	Os = 24' 54" 40.4"
Ls = 200.00'	D = 19' 45" 25.8"	D = 24' 54" 40.4"	Ls = 200.00'
LT = 134.07'	L = 411.34'	L = 261.03'	LT = 134.68'
ST = 67.43'	T = 248.86'	T = 146.60'	ST = 67.89'
R = 230.00'	R = 230.00'	R = 230.00'	R = 115,000.00'
SE = 0.08	SE = 0.08	SE = 0.08	SE = NC
V = 30mph	V = 30mph	V = 30mph	V = 60mph

-Y2RPB-	
Pi Sta 13+13.86	Pi Sta 17+57.94
Δ = 10' 2" 03.8" (RT)	Δ = 65' 0" 34.0" (RT)
D = 19' 45" 25.8"	D = 24' 54" 40.4"
L = 54.52'	L = 261.03'
T = 27.35'	T = 146.60'
R = 302.00'	R = 230.00'
SE = 0.08	SE = 0.08
V = 30mph	V = 30mph

-L2-	
Pi Sta 21+45.69	Pi Sta 23+07.44
Δ = 0' 46" 37.3" (LT)	Δ = 0' 50" 05.0" (RT)
D = 0' 29" 53.6"	D = 0' 29" 53.6"
L = 155.36'	L = 167.54'
T = 77.98'	T = 83.77'
R = 115,000.00'	R = 115,000.00'
SE = NC	SE = NC
V = 60mph	V = 60mph



-L2-	
Pi Sta 10+94.75	Pi Sta 12+49.03
Δ = 0' 56" 36.7" (RT)	Δ = 1' 07" 06.4" (LT)
D = 0' 29" 53.6"	D = 0' 29" 53.6"
L = 189.49'	L = 200.00'
T = 94.75'	T = 100.54'
R = 115,000.00'	R = 115,000.00'
SE = 0.08	SE = NC
V = 60mph	V = 60mph



LOCATION: INTERCHANGE AT OLD NC 1158 1213	COUNTY: HERTFORD
TIP NO.: R-5311A	DESIGNED BY: JORDAN C. BOND
CHECKED BY: DENA C. SHAD	DATE: 04-15-2016

JAMES E. PIERCE, JR.
AND JACQUELYN P. BAILEY
PINC084-24-6822
DB 18' PG 236 (MAP)

DATE: 04-15-2016
PROJECT: R-5311A
SHEET: EC-19/CONST.07