



5121 Kingdom Way,
Suite 100
Raleigh, NC 27607
NC License No: F-0258

PROJECT REFERENCE NO.	SHEET NO.
R-5311A	EC-12/CONST.10

RW SHEET NO.
ROADSIDE ENVIRONMENTAL PROJECT ENGINEER

LEVEL III CERTIFIED BY:
STACEY H. BAILEY, PE
CERTIFICATION NUMBER: 3074
ISSUED: JANUARY 13, 2017

NAD 83/NSRS 2007

MATCHLINE -Y2- STA 43+00
SEE SHEET 7

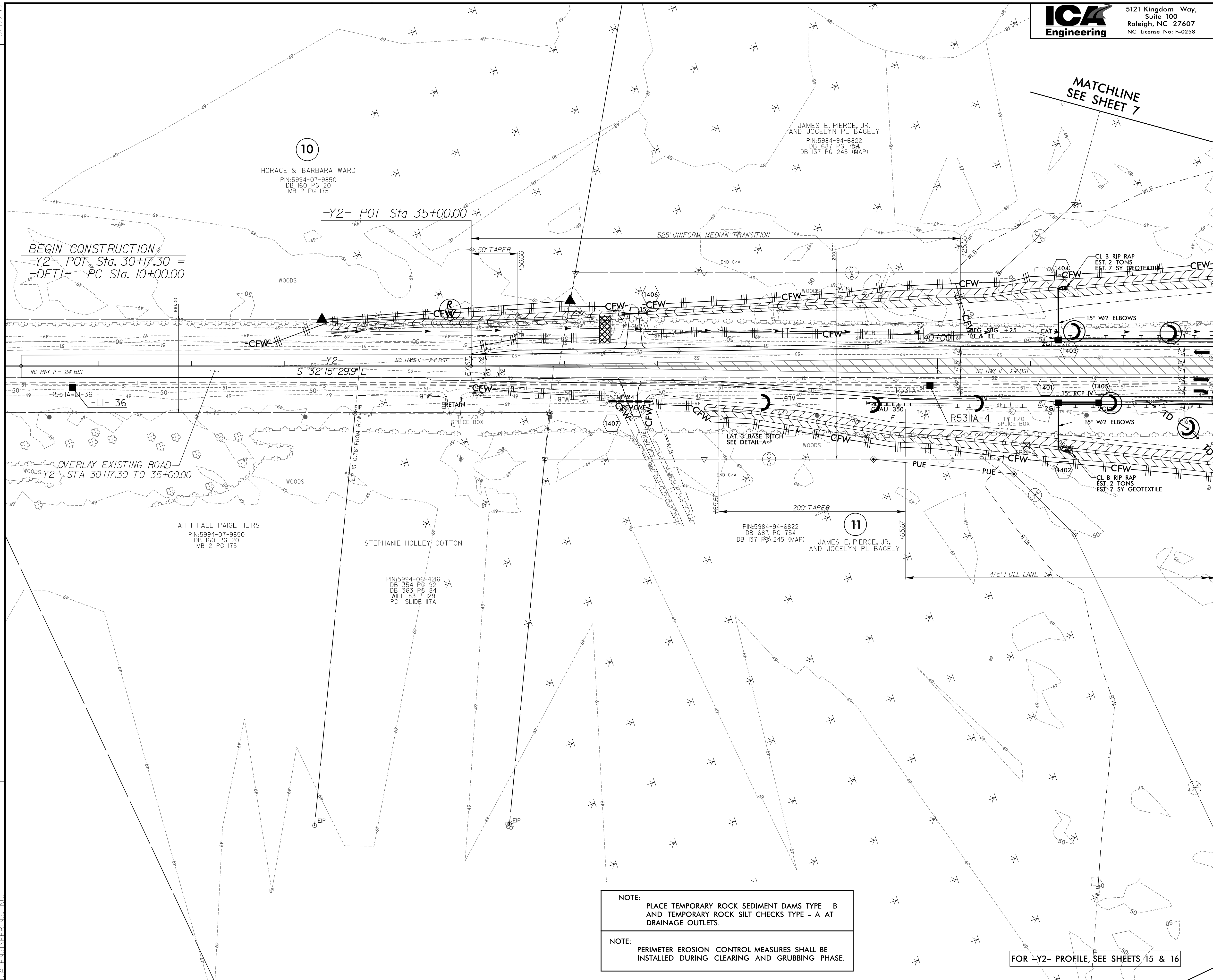
CLEARING AND GRUBBING
EROSION CONTROL FOR
CONSTRUCTION SHEET 10

MATCHLINE
SEE SHEET 7

FOR -Y2- PROFILE, SEE SHEETS 15 & 16

8/17/99

1/3/2017
R5311A_hud_erosion_e&g_pah_10.dgn
ICA ENGINEERING, INC.



NOTE:
PLACE TEMPORARY ROCK SEDIMENT DAMS TYPE - B
AND TEMPORARY ROCK SILT CHECKS TYPE - A AT
DRAINAGE OUTLETS.

NOTE:
PERIMETER EROSION CONTROL MEASURES SHALL BE
INSTALLED DURING CLEARING AND GRUBBING PHASE.

10
HORACE & BARBARA WARD
PIN:5994-07-9850
DB 160 PG 20
MB 2 PG 175

JAMES E. PIERCE, JR.
AND JOCELYN PL BAGELY
PIN:5984-94-6822
DB 687 PG 754
DB 137 PG 245 (MAP)

FAITH HALL PAIGE HEIRS
PIN:5994-07-9850
DB 160 PG 20
MB 2 PG 175

STEPHANIE HOLLEY COTTON

PIN:5994-06-4216
DB 354 PG 92
DB 363 PG 94
WILL 83-E-129
PC TSLIDE IITA

PIN:5984-94-6822
DB 687 PG 754
DB 137 PG 245 (MAP)

11
JAMES E. PIERCE, JR.
AND JOCELYN PL BAGELY