

5/28/17

-Y2LPD-

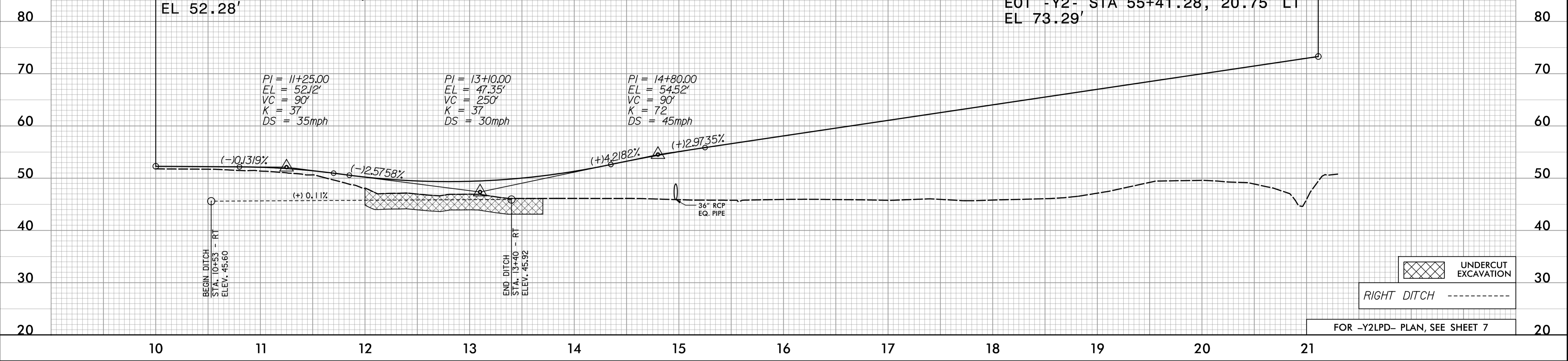
ICA Engineering
 5121 Kingdom Way,
 Suite 100
 Raleigh, NC 27607
 NC License No: F-0258

PROJECT REFERENCE NO. R-5311A	SHEET NO. 18
ROADWAY DESIGN ENGINEER SEAL 032074 DENVA C. SNEAD	HYDRAULICS ENGINEER SEAL 034364 JENYON J. COMBER
DocuSigned by: Denna C. Snood 5/10/2017	DocuSigned by: Jenyon J. Comber 5/10/2017

**DOCUMENT NOT CONSIDERED FINAL
UNLESS ALL SIGNATURES COMPLETED**

BEGIN GRADE
 -Y2LPD- STA 10+00.00=
 EOT -L2- STA 17+96.92, 12' RT
 EL 52.28'

END GRADE
 -Y2LPD- STA 21+11.21=
 EOT -Y2- STA 55+41.28, 20.75' LT
 EL 73.29'



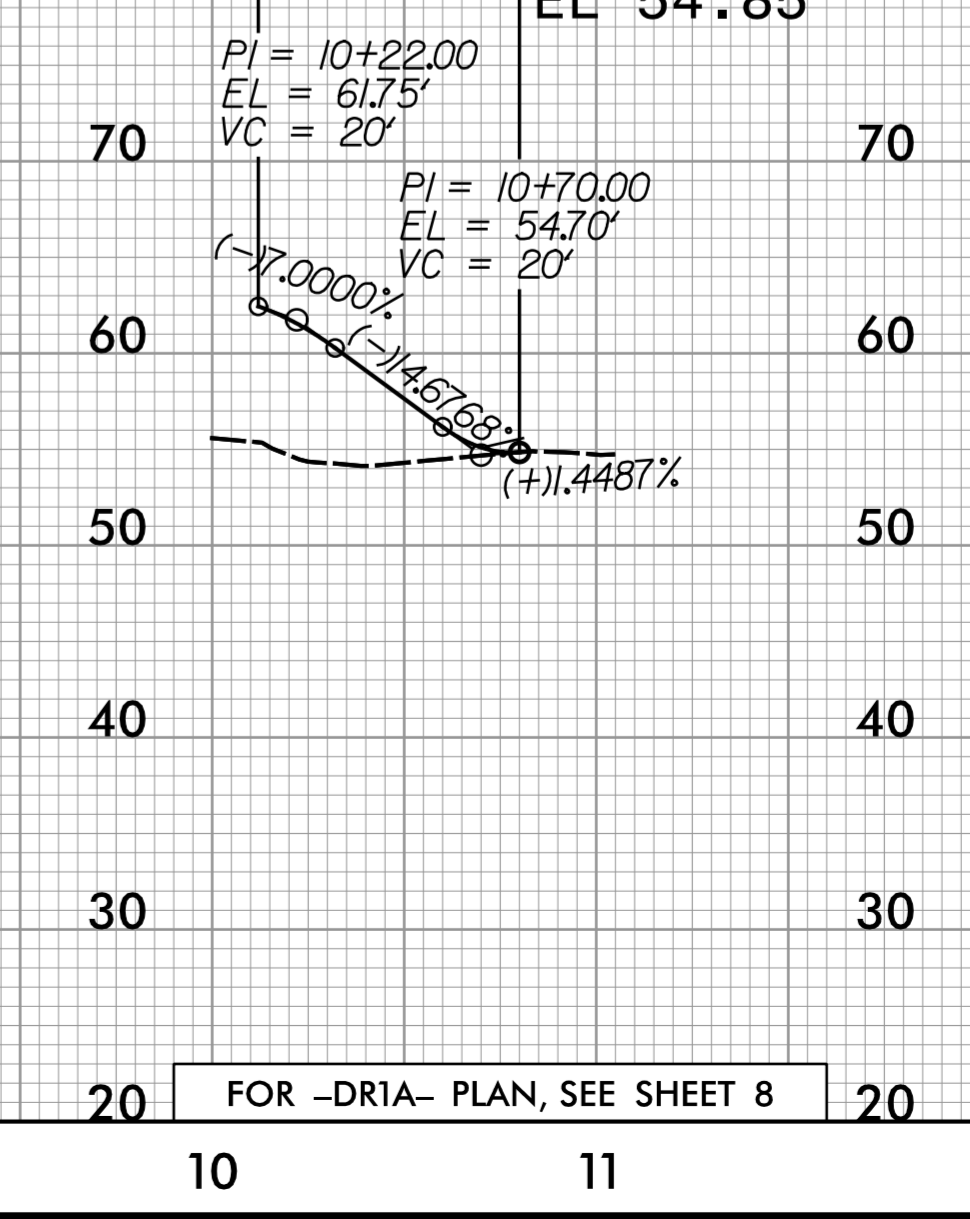
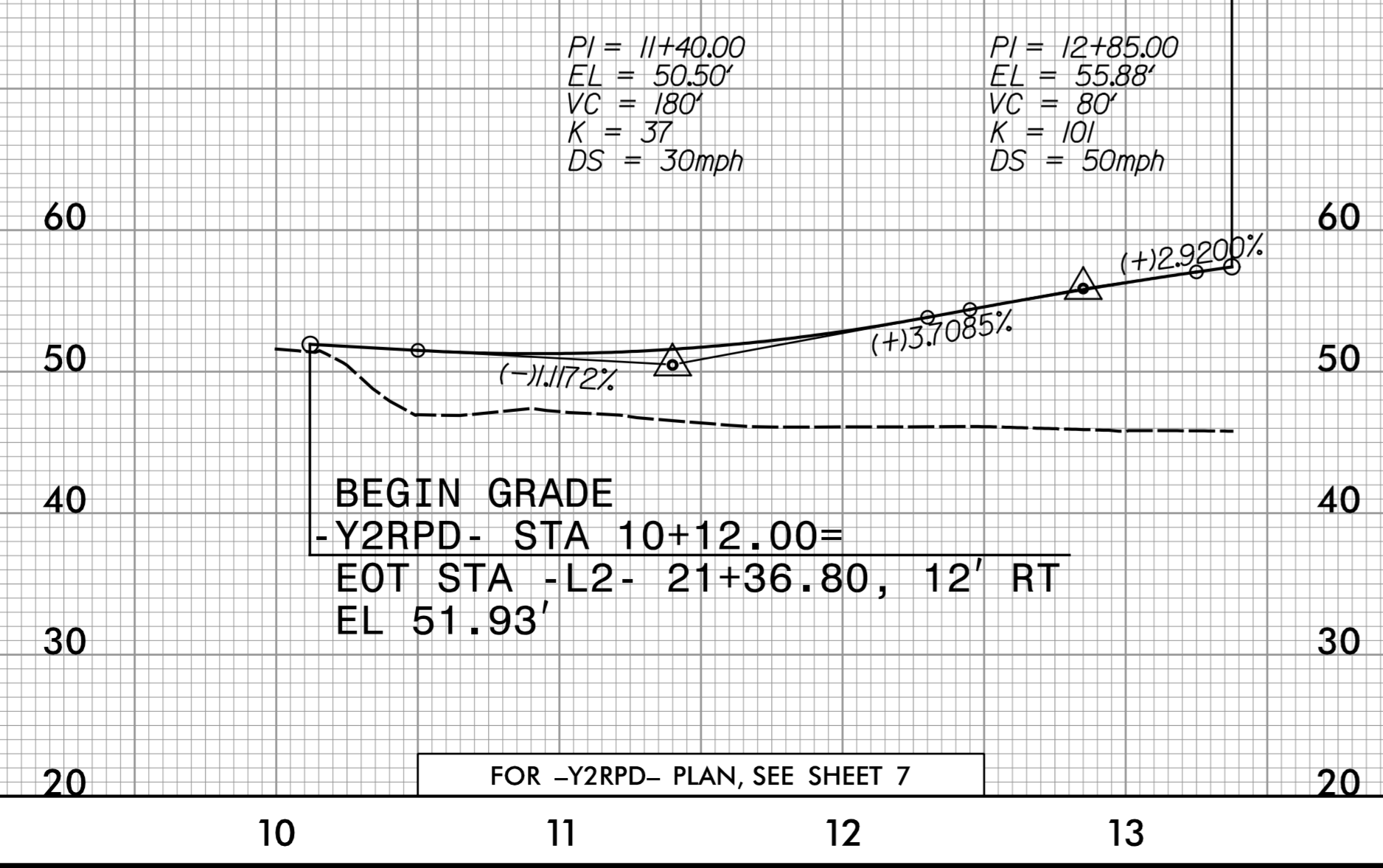
-Y2RPD-

-DR1A-

END GRADE
 -Y2RPD- STA 13+37.49 =
 -Y2LPD- STA 15+45.00,
 12' LT EL = 57.41'

BEGIN GRADE
 -DR1A- STA 10+12.00=
 EOT -Y1- STA 17+24.01, 12' LT
 EL 62.45'

END GRADE
 -DR1A- STA 10+80.00=
 EL 54.85'



5/16/2017 10:41:18 AM P:\Projects\17\1705311A-RDY_PSH_18.dgn