

5/28/17

-Y2LPB-



5121 Kingdom Way,
Suite 100
Raleigh, NC 27607
NC License No: F-0258

PROJECT REFERENCE NO.

R-5311A

SHEET NO.

17

ROADWAY DESIGN ENGINEER

DEBRA C. SNEAD

HYDRAULICS ENGINEER

DEVON J. CORNER



DocuSigned by: Debra C. Snoad 5/10/2017

DocuSigned by: Devon J. Corner 5/10/2017

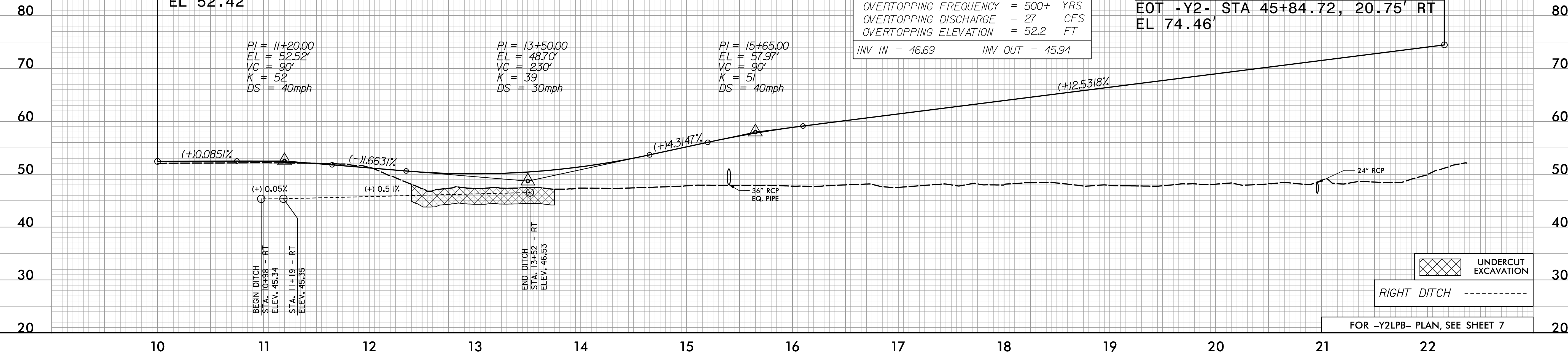
**DOCUMENT NOT CONSIDERED FINAL
UNLESS ALL SIGNATURES COMPLETED**

PIPE HYDRAULIC DATA
24" RCP STA 20+96 -Y2LPB-

DRAINAGE AREA	= 6	AC
DESIGN FREQUENCY	= 50	YRS
DESIGN DISCHARGE	= 12	CFS
DESIGN HW ELEVATION	= 48.6	FT
100 YEAR DISCHARGE	= 13	CFS
100 YEAR HW ELEVATION	= 48.7	FT
OVERTOPPING FREQUENCY	= 500+	YRS
OVERTOPPING DISCHARGE	= 27	CFS
OVERTOPPING ELEVATION	= 52.2	FT
INV IN	= 46.69	
INV OUT	= 45.94	

BEGIN GRADE
-Y2LPB- STA 10+00.00=
EOT -L2- STA 16+60.41, 12' LT
EL 52.42'

END GRADE
-Y2LPB- STA 22+16.18=
EOT -Y2- STA 45+84.72, 20.75' RT
EL 74.46'



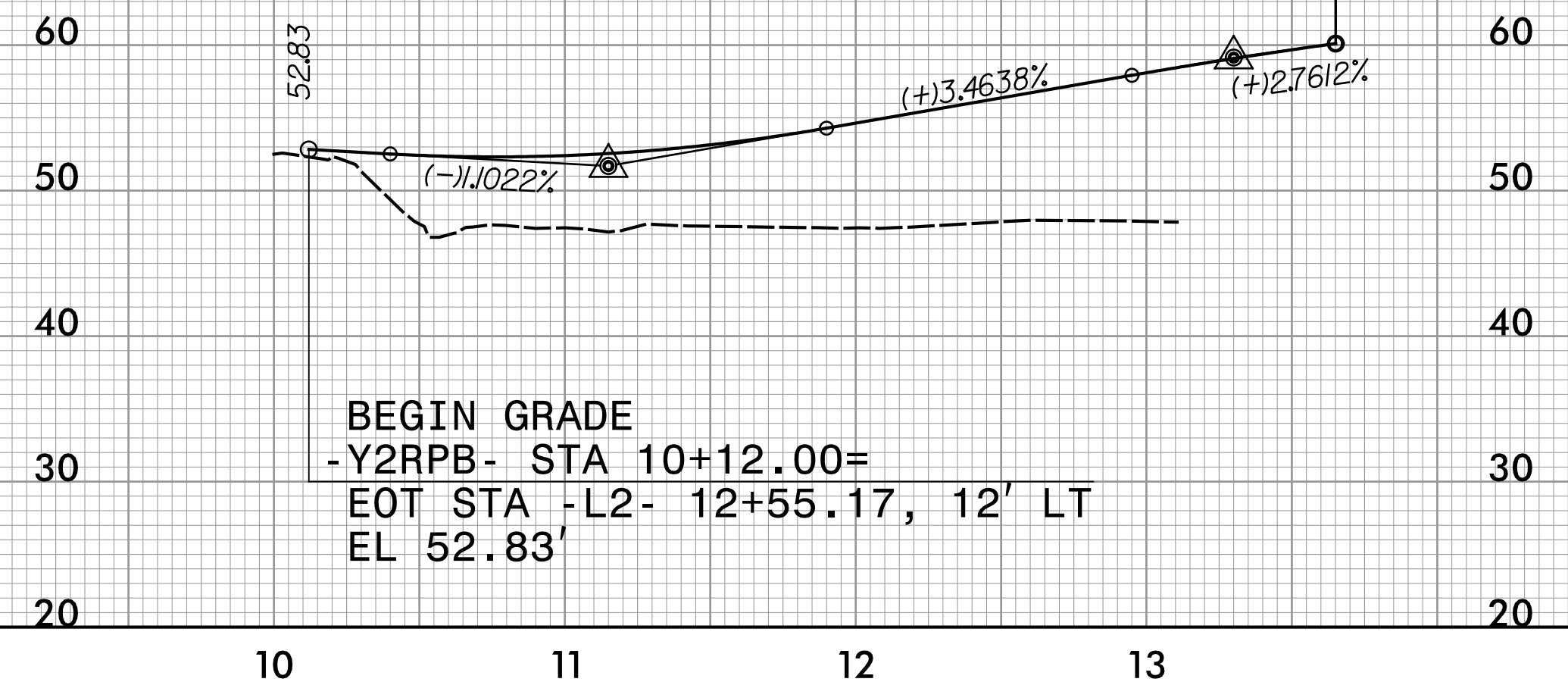
UNDERCUT EXCAVATION
 RIGHT DITCH
 FOR -Y2LPB- PLAN, SEE SHEET 7

-Y2RPB-

-Y2RPB- STA 13+65.06=
-Y2LPB- STA 16+11.31, 12' LT, EL 60.11'

PI = 11+5.00
 EL = 51.69'
 VC = 150'
 K = 33
 DS = 25mph

 PI = 13+30.00
 EL = 59.14'
 VC = 70'
 K = 100
 DS = 50mph



BEGIN GRADE
-Y2RPB- STA 10+12.00=
EOT STA -L2- 12+55.17, 12' LT
EL 52.83'

FOR -Y2RPB- PLAN, SEE SHEET 7

5/16/2017 10:41:14 AM P:\Projects\17\1705311A-RDY_PSH_17.dgn