

8/17/19

5/1/2017 10:41:00 AM P:\05\RES311A_RDY_PSH_11.dgn
D:\A\ENGINEERING\INC

PRESTON WOOD
MANUFACTURED HOMES, INC.

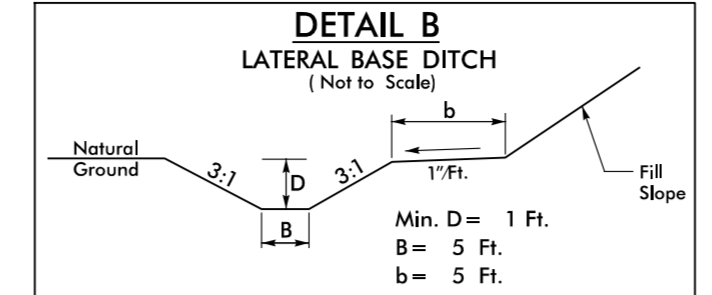
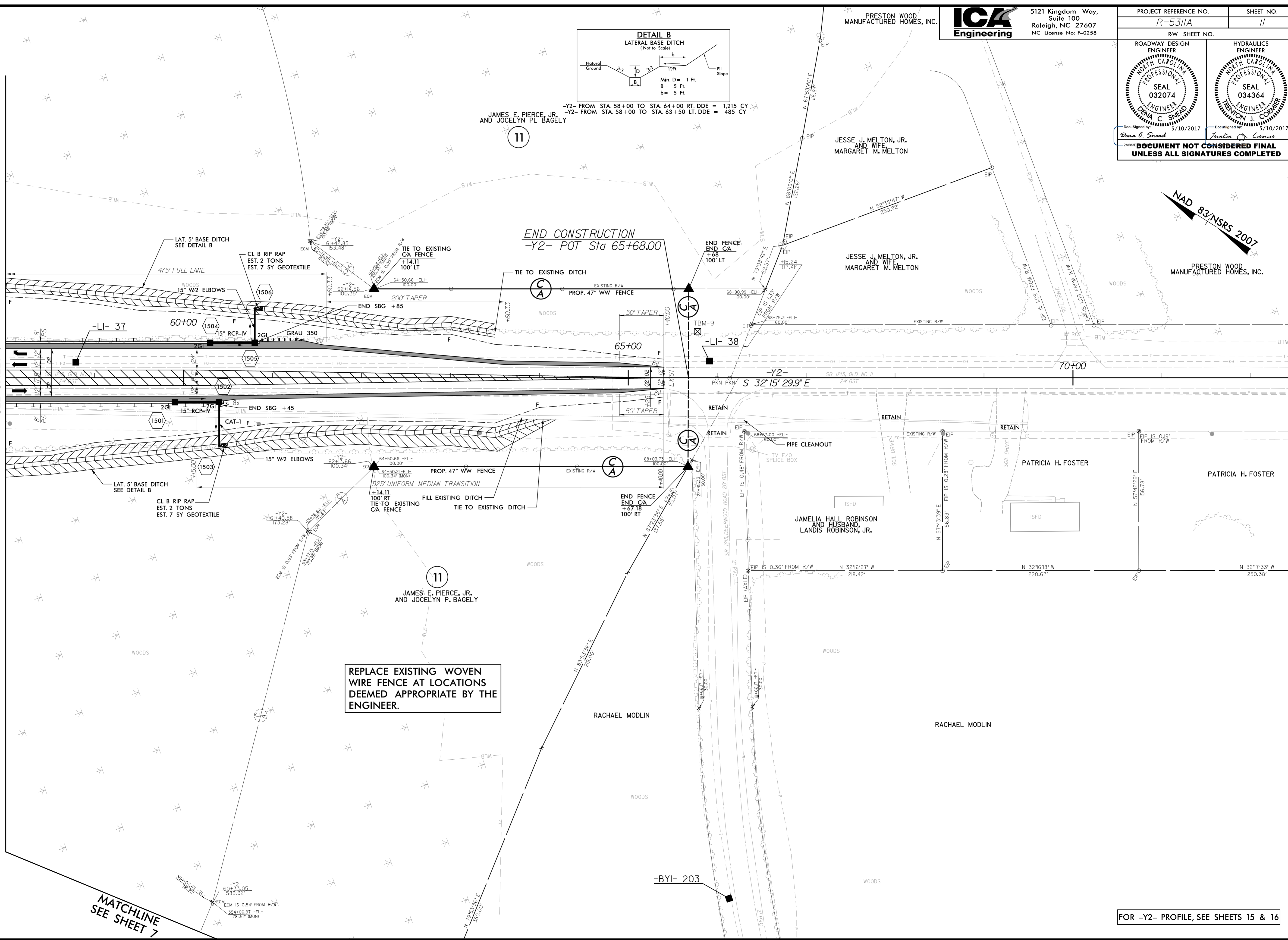


5121 Kingdom Way,
Suite 100
Raleigh, NC 27607
NC License No: F-0258

PROJECT REFERENCE NO. <i>R-5311A</i>	SHEET NO. <i>11</i>
RW SHEET NO.	
ROADWAY DESIGN ENGINEER 	HYDRAULICS ENGINEER
DocuSigned by: <i>Denia C. Sneed</i> 5/10/2017	DocuSigned by: <i>Brenton J. Corrier</i> 5/10/2017
DOCUMENT NOT CONSIDERED FINAL UNLESS ALL SIGNATURES COMPLETED	



MATCHLINE -Y2- STA 58+00
SEE SHEET 7



JAMES E. PIERCE, JR.
AND JOCELYN P. BAGELY

-Y2- FROM STA. 58+00 TO STA. 64+00 RT. DDE = 1,215 CY
-Y2- FROM STA. 58+00 TO STA. 63+50 LT. DDE = 485 CY

END CONSTRUCTION
-Y2- POT Sta 65+68.00

REPLACE EXISTING WOVEN
WIRE FENCE AT LOCATIONS
DEEMED APPROPRIATE BY THE
ENGINEER.

MATCHLINE
SEE SHEET 7

FOR -Y2- PROFILE, SEE SHEETS 15 & 16