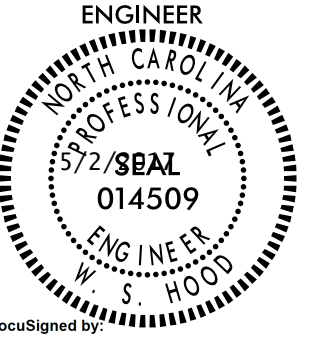
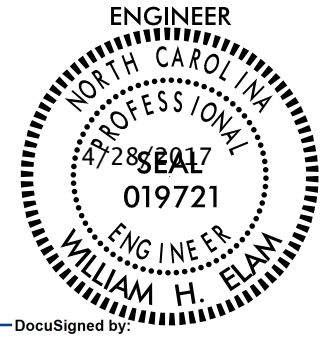
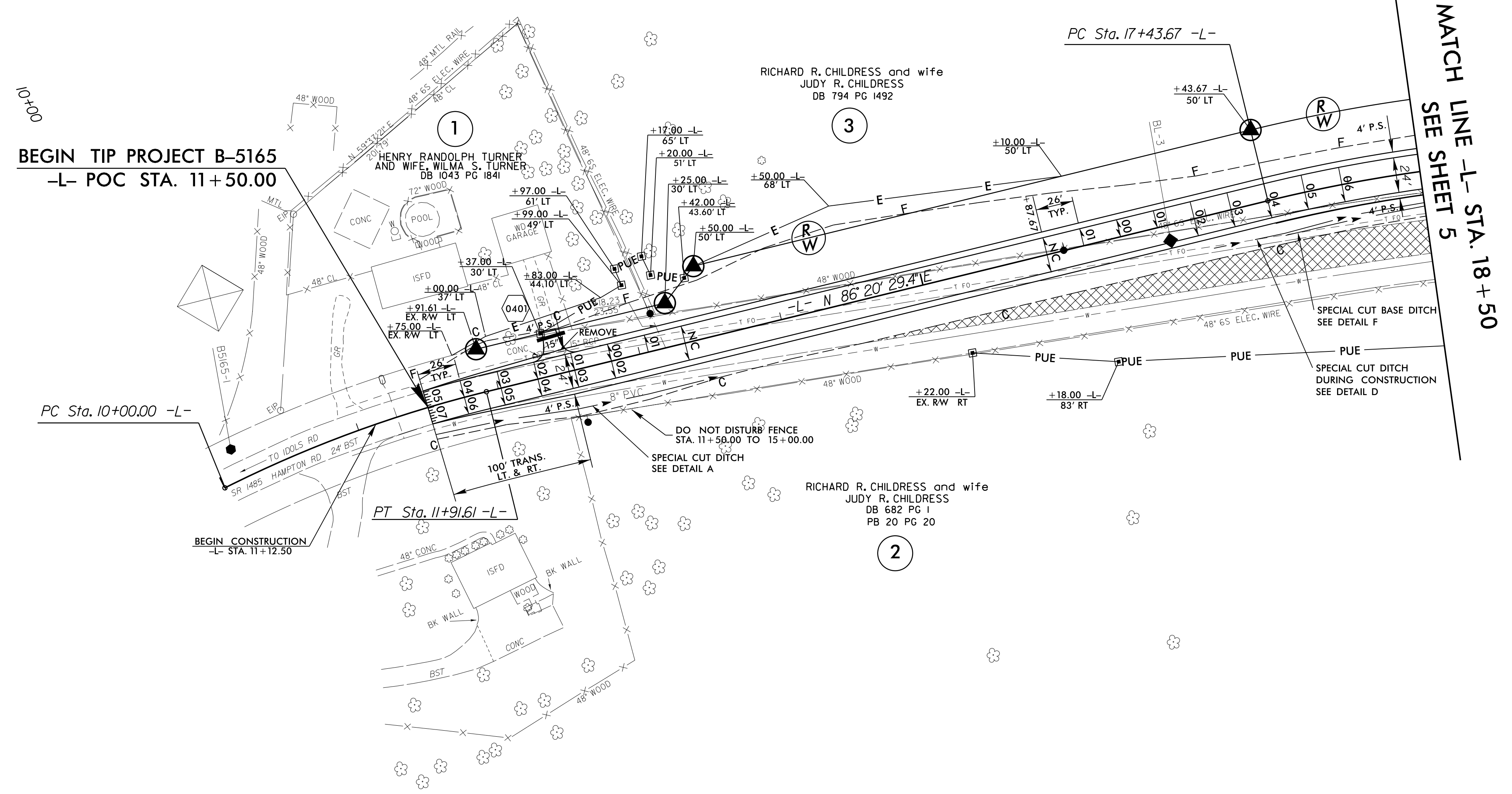
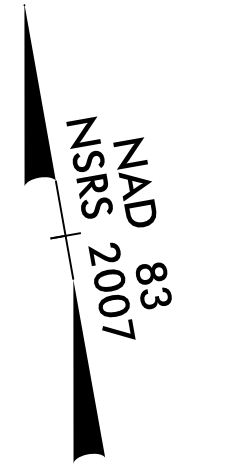
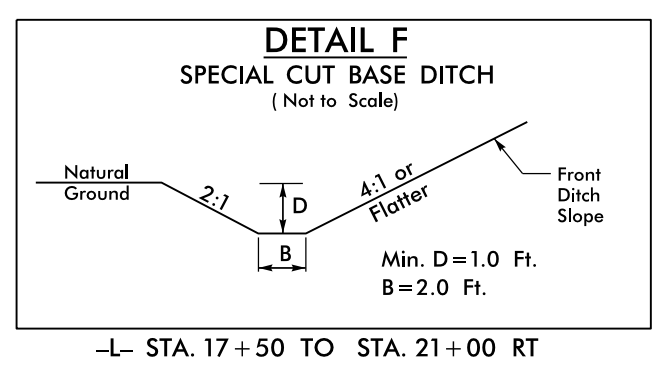
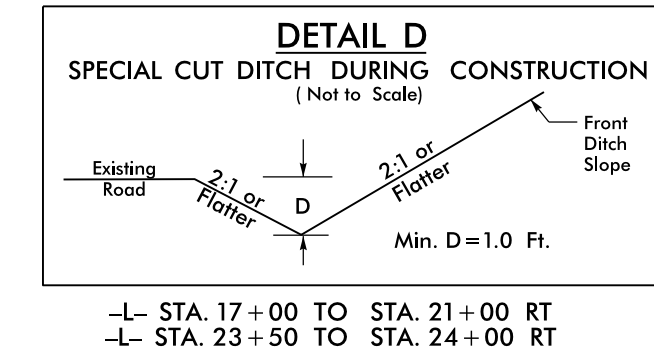
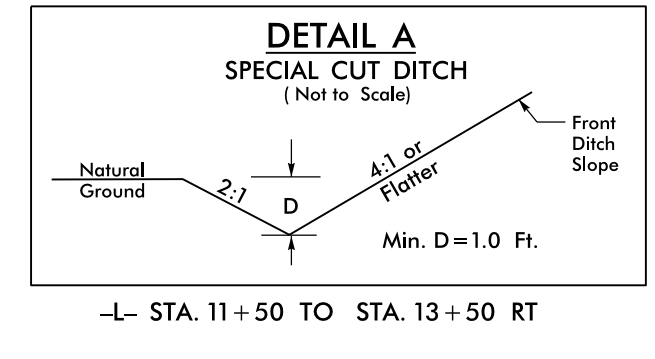



PROJECT REFERENCE NO. <b>B-5165</b>	SHEET NO. <b>4</b>
RW SHEET NO.	
ROADWAY DESIGN ENGINEER 	HYDRAULICS ENGINEER 
DocuSigned by: W. S. Hand	DocuSigned by: Wm. H. Elam, Jr.
<b>DOCUMENT NOT CONSIDERED FINAL UNLESS ALL SIGNATURES COMPLETED</b>	

-L-

$N 73^{\circ} 25' 33.4" E$  (BACK)  $PI Sta 18+71.28$   
 $PI Sta 10+96.21$   $\Delta = 13^{\circ} 43' 46.0" (RT)$   
 $\Delta = 12^{\circ} 54' 56.0" (RT)$   $D = 5^{\circ} 24' 18.9"$   
 $D = 6^{\circ} 44' 26.4"$   $L = 254.00'$   
 $L = 191.61'$   $T = 127.61'$   
 $T = 96.21'$   $R = 1,060.00'$   
 $R = 850.00'$   $SE = 0.06$   
 $RO = 156'$



 PAVEMENT REMOVAL

FOR -L- PROFILE, SEE SHEET NO. 6

ALL DRIVEWAY RADII ARE 10' UNLESS NOTED OTHERWISE ON PLANS

FOR STRUCTURE PLANS, SEE SHEETS S-1 THRU S-24