

**This electronic collection of documents is provided
for the convenience of the user
and is Not a Certified Document –**

**The documents contained herein were originally issued
and sealed by the individuals whose names and license
numbers appear on each page, on the dates appearing
with their signature on that page.**

**This file or an individual page
shall not be considered a certified document.**

09.08/99

TIP PROJECT: R-5516

STATE OF NORTH CAROLINA
DIVISION OF HIGHWAYS

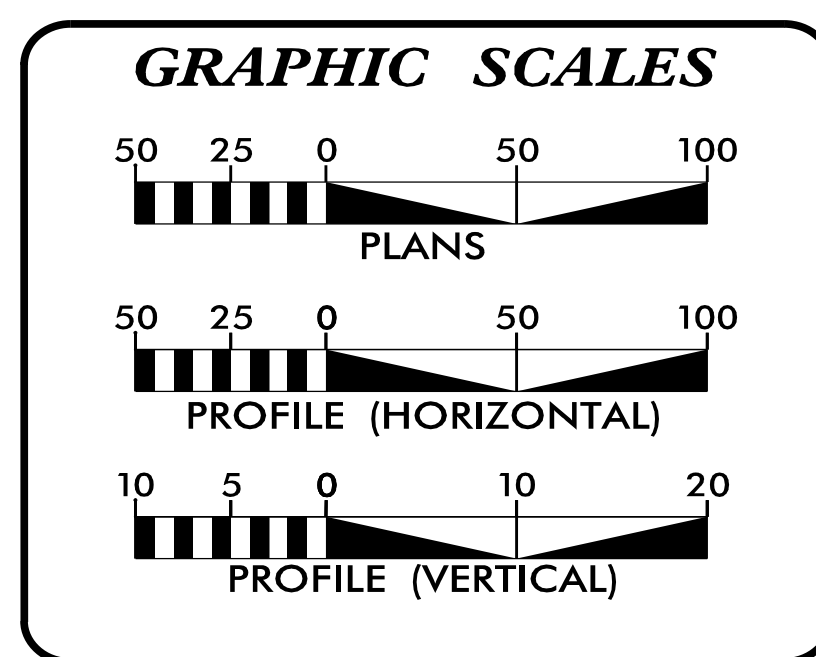
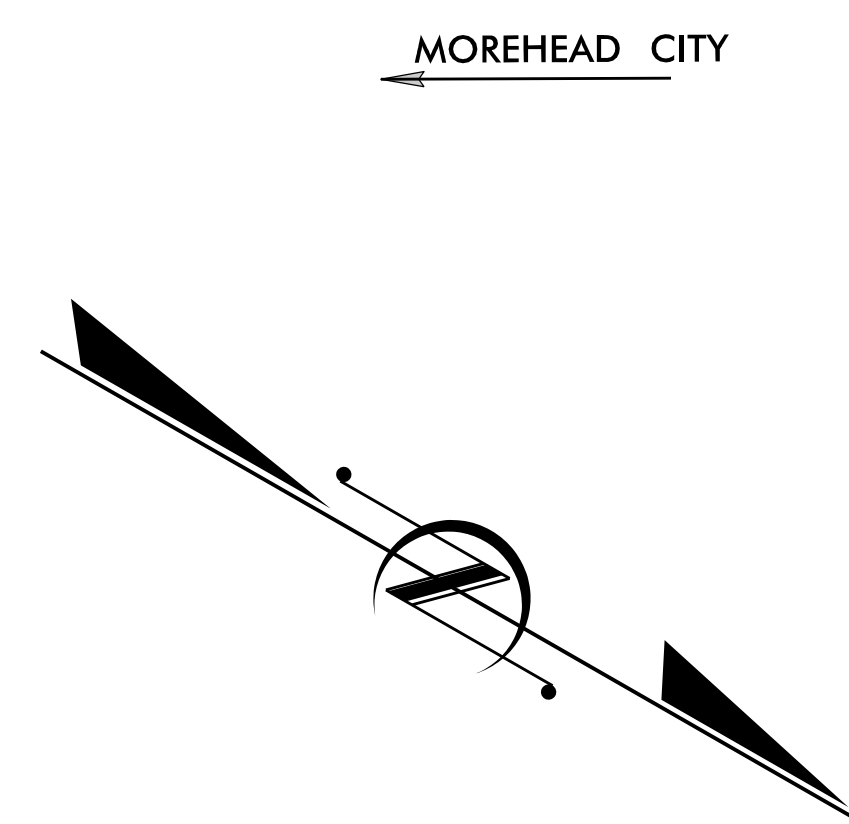
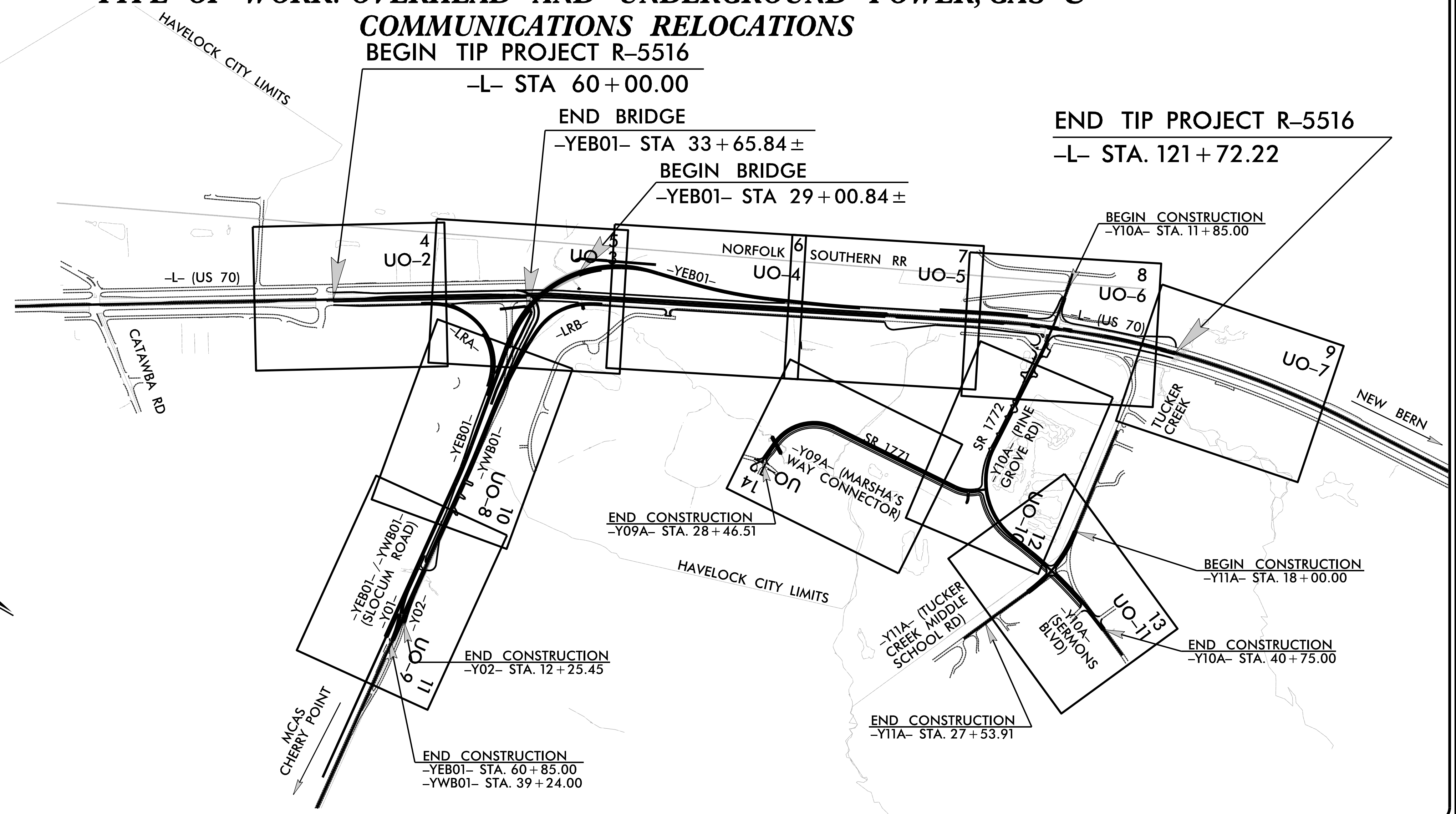
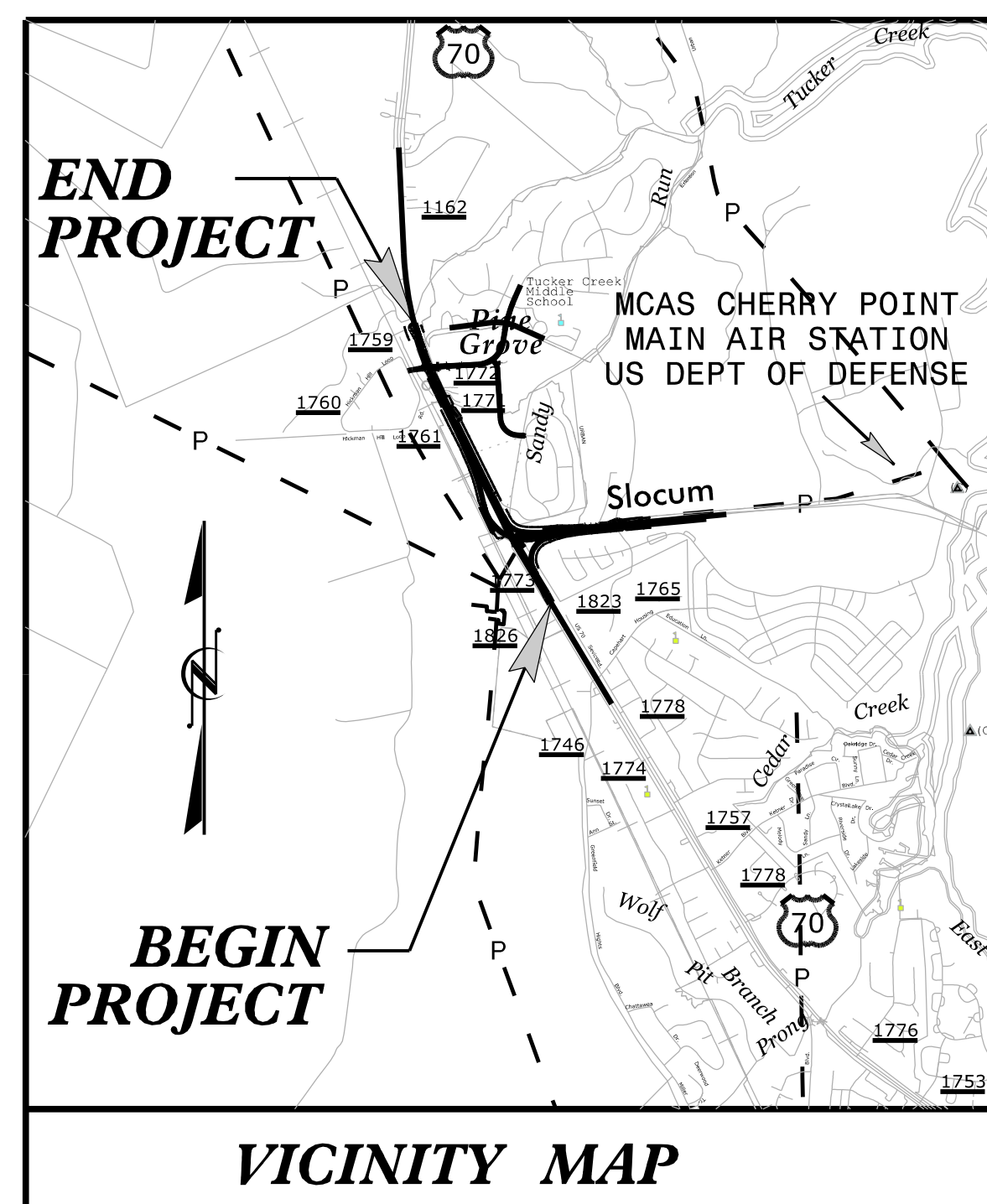
**UTILITIES BY OTHERS PLANS
CRAVEN COUNTY**

**LOCATION: US 70 (SR 1162) AT SLOCUM ROAD AT
CHERRY POINT MILITARY BASE**

**TYPE OF WORK: OVERHEAD AND UNDERGROUND POWER, GAS &
COMMUNICATIONS RELOCATIONS**
BEGIN TIP PROJECT R-5516

T.I.P. NO.	SHEET NO.
R-5516	UO-1

NOTE:
ALL UTILITY WORK SHOWN ON THIS SHEET IS DONE BY OTHERS.
NO PAYMENT WILL BE MADE TO THE CONTRACTOR FOR UTILITY WORK SHOWN ON THIS SHEET.



INDEX OF SHEETS

SHEET NO.:	DESCRIPTION:
UO-1	TITLE SHEET
UO-2 THRU UO-12	UBO PLAN SHEETS

UTILITY OWNERS WITH CONFLICTS

- (A) POWER (DISTRIBUTION) - DUKE ENERGY
- (B) POWER (TRANSMISSION) - DUKE ENERGY
- (C) POWER (DISTRIBUTION) - CITY OF NEW BERN
- (D) COMMUNICATIONS - CENTURYLINK
- (E) SEWER - CITY OF HAVELOCK
- (F) LIGHTING - CHERRY POINT MILITARY BASE
- (G) COMMUNICATIONS - TIME WARNER CABLE
- (H) FIBER - CRAVEN COUNTY SCHOOLS

PREPARED IN THE OFFICE OF:

JOHN FAISON UTILITY PROJECT MANAGER
JOHN FAISON PROJECT UTILITY COORDINATOR
JOSH BARBOUR PROJECT UTILITY DESIGNER

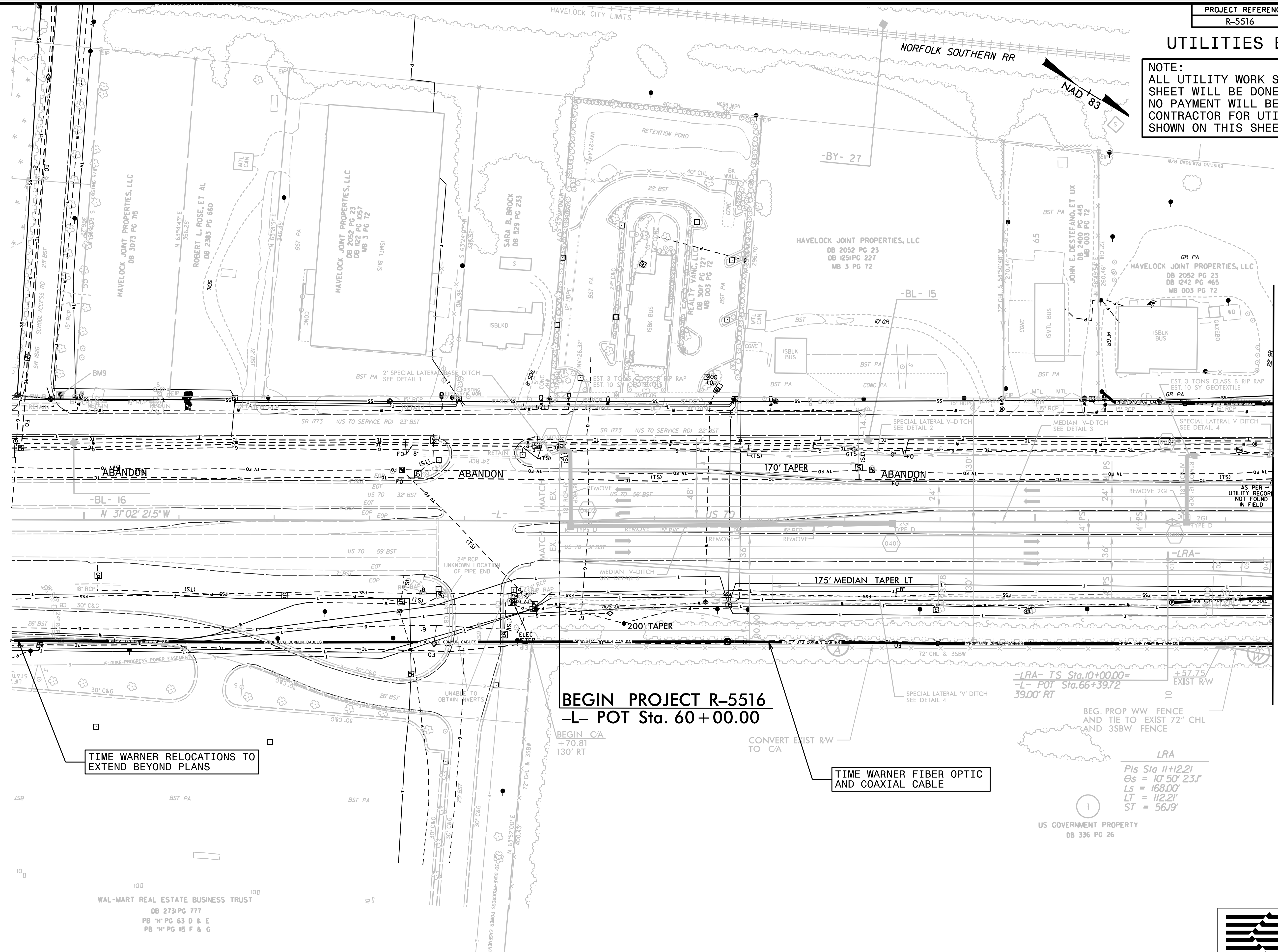
**DIVISION OF HIGHWAYS
UTILITIES UNIT**
 1555 MAIL SERVICES CENTER
 RALEIGH, NC 27699-1555
 PHONE (919) 707-6690
 FAX (919) 250-4151

BO HEMPHILL, P.E. UTILITIES REGIONAL ENGINEER
NABIL HAMDAN UTILITIES ENGINEER
ED REAMS UTILITIES AREA COORDINATOR
LARRY JAMES JR. UTILITIES COORDINATOR

2:03:34 PM
290_001_r5516_ut_1sh_u001.psh.dgn
Division:

UTILITIES BY OTHERS

NOTE:
ALL UTILITY WORK SHOWN ON THIS SHEET WILL BE DONE BY OTHERS. NO PAYMENT WILL BE MADE TO THE CONTRACTOR FOR UTILITY WORK SHOWN ON THIS SHEET.



MATCHLINE -L- STA 67+50.00
SEE PLAN SHEET UO-3

-LRA- TS Sta. 10+00.00 =
-L- POT Sta. 66+39.72
39.00' RT

BEG. PROP WW FENCE
AND TIE TO EXIST 72" CHL
AND 35BW FENCE

LRA
Pis Sta 11+12.21
Gs = 10' 50" 23J'
Ls = 168.00'
LT = 112.21'
ST = 56.19'

US GOVERNMENT PROPERTY
DB 336 PG 26

TIME WARNER RELOCATIONS TO
EXTEND BEYOND PLANS

TIME WARNER FIBER OPTIC
AND COAXIAL CABLE

BEGIN PROJECT R-5516
-L- POT Sta. 60+00.00

BEGIN CA
+70.81
130' RT

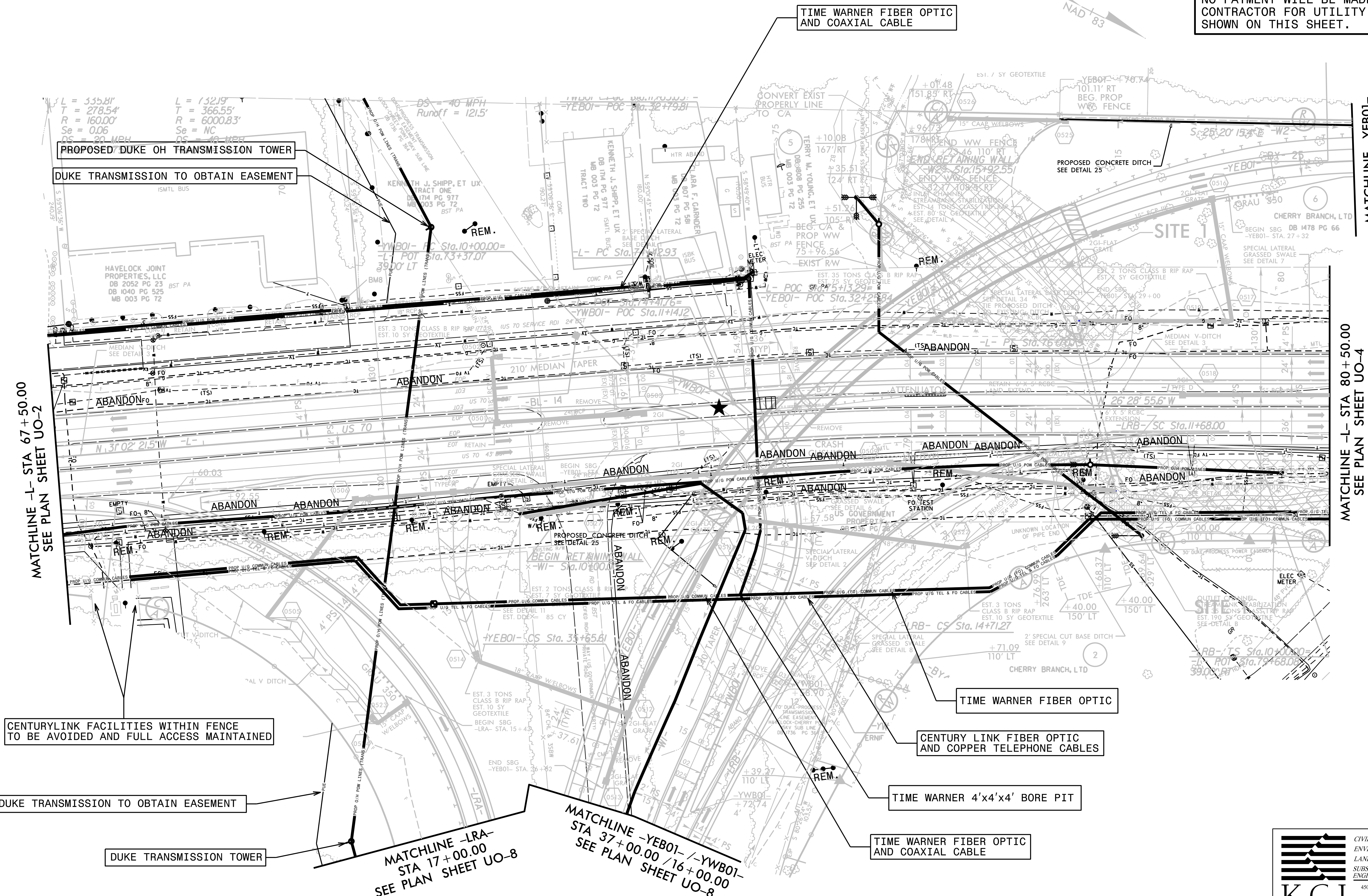
WAL-MART REAL ESTATE BUSINESS TRUST
DB 273 PG 777
PB 74 PG 63 D & F
PB 74 PG 115 F & G

5/14/99
7:04:54 AM
290_08354_4516_ut_rdy4_LU002_psh.dgn

UTILITIES BY OTHERS

NOTE:
ALL UTILITY WORK SHOWN ON THIS SHEET WILL BE DONE BY OTHERS. NO PAYMENT WILL BE MADE TO THE CONTRACTOR FOR UTILITY WORK SHOWN ON THIS SHEET.

5/14/99
7:05:14 AM
290_00314_A516_ut_rdy5_U003_psh.dgn



$L = 335.81'$
 $T = 278.54'$
 $R = 160.00'$
 $Se = 0.06$
 $DS = 20 MPH$

$L = 132.19'$
 $T = 366.55'$
 $R = 6000.83'$
 $Se = NC$
 $DS = 40 MPH$

PROPOSED DUKE OH TRANSMISSION TOWER

DUKE TRANSMISSION TO OBTAIN EASEMENT

TIME WARNER FIBER OPTIC AND COAXIAL CABLE

CENTURYLINK FACILITIES WITHIN FENCE TO BE AVOIDED AND FULL ACCESS MAINTAINED

DUKE TRANSMISSION TO OBTAIN EASEMENT

DUKE TRANSMISSION TOWER

TIME WARNER FIBER OPTIC

CENTURY LINK FIBER OPTIC AND COPPER TELEPHONE CABLES

TIME WARNER 4'x4'x4' BORE PIT

TIME WARNER FIBER OPTIC AND COAXIAL CABLE

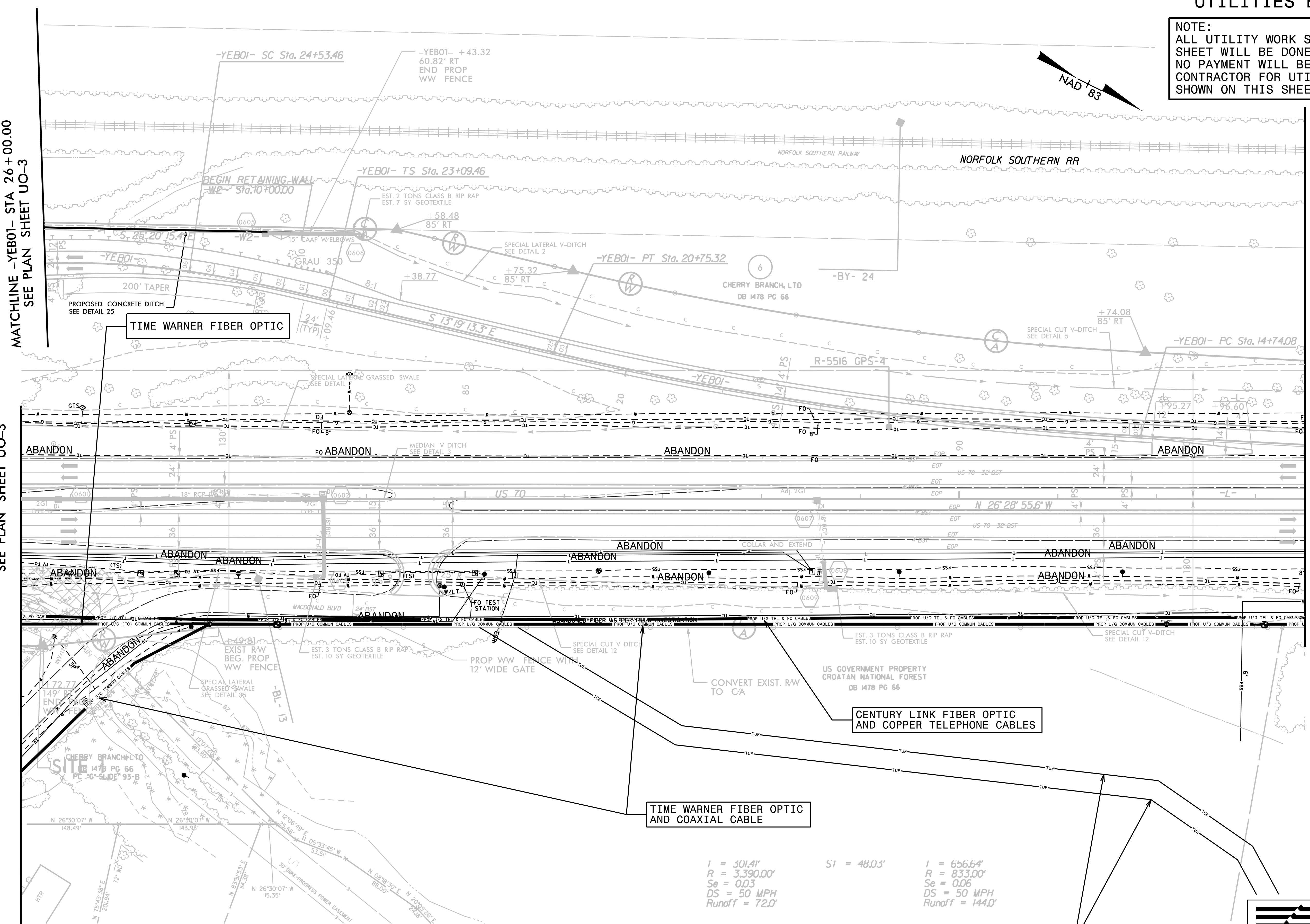
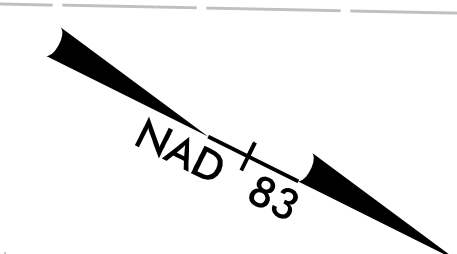
MATCHLINE -LRA- STA 17+00.00 SEE PLAN SHEET UO-8

MATCHLINE -YEB01- /-YWB01- STA 37+00.00 /16+00.00 SEE PLAN SHEET UO-8



UTILITIES BY OTHERS

NOTE:
ALL UTILITY WORK SHOWN ON THIS SHEET WILL BE DONE BY OTHERS. NO PAYMENT WILL BE MADE TO THE CONTRACTOR FOR UTILITY WORK SHOWN ON THIS SHEET.



MATCHLINE -YEBOI- STA 26+00.00
SEE PLAN SHEET UO-3

MATCHLINE -L- STA 80+50.00
SEE PLAN SHEET UO-3

MATCHLINE -L- / -YEBOI-
STA 93+50.00 / 13+07.88
SEE PLAN SHEET UO-5

TIME WARNER FIBER OPTIC
AND COAXIAL CABLE

CENTURY LINK FIBER OPTIC
AND COPPER TELEPHONE CABLES

$I = 501.41'$ $SI = 480.3'$ $I = 656.64'$
 $R = 3,390.00'$ $R = 833.00'$
 $Se = 0.03$ $Se = 0.06$
 $DS = 50 MPH$ $DS = 50 MPH$
 $Runoff = 72.0'$ $Runoff = 144.0'$

PROPOSED TCE OR ACCESS EASEMENT
TO BE OBTAINED BY THE CITY OF
HAVELOCK FOR PUMP STATION.

**CIVIL ENGINEERS
ENVIRONMENTAL - CEI
LAND SURVEYING
SUBSURFACE UTILITY
ENGINEERING**

KCI
ASSOCIATES OF N.C.

4505 FALLS OF NEUSE ROAD
SUITE 400
RALEIGH, NORTH CAROLINA 27609
(919) 783-9214
WWW.KCI.COM

5/14/99
7:08:35 AM
290_0816_516_ut_rdy6_LU004_psh.dgn

UTILITIES BY OTHERS

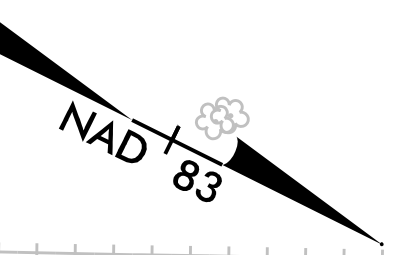
NOTE:
ALL UTILITY WORK SHOWN ON THIS SHEET WILL BE DONE BY OTHERS. NO PAYMENT WILL BE MADE TO THE CONTRACTOR FOR UTILITY WORK SHOWN ON THIS SHEET.

-YEB01-
PI Sta 10+00.08
Δ = 3' 00" 00.0' (RT)
D = 0' 47" 05.5"
L = 382.23'
T = 191.6'
R = 7,300.00'
Se = 0.06
DS = 50 MPH
Runoff = 60.0'

US GOVERNMENT PROPERTY
CROATAN NATIONAL FOREST

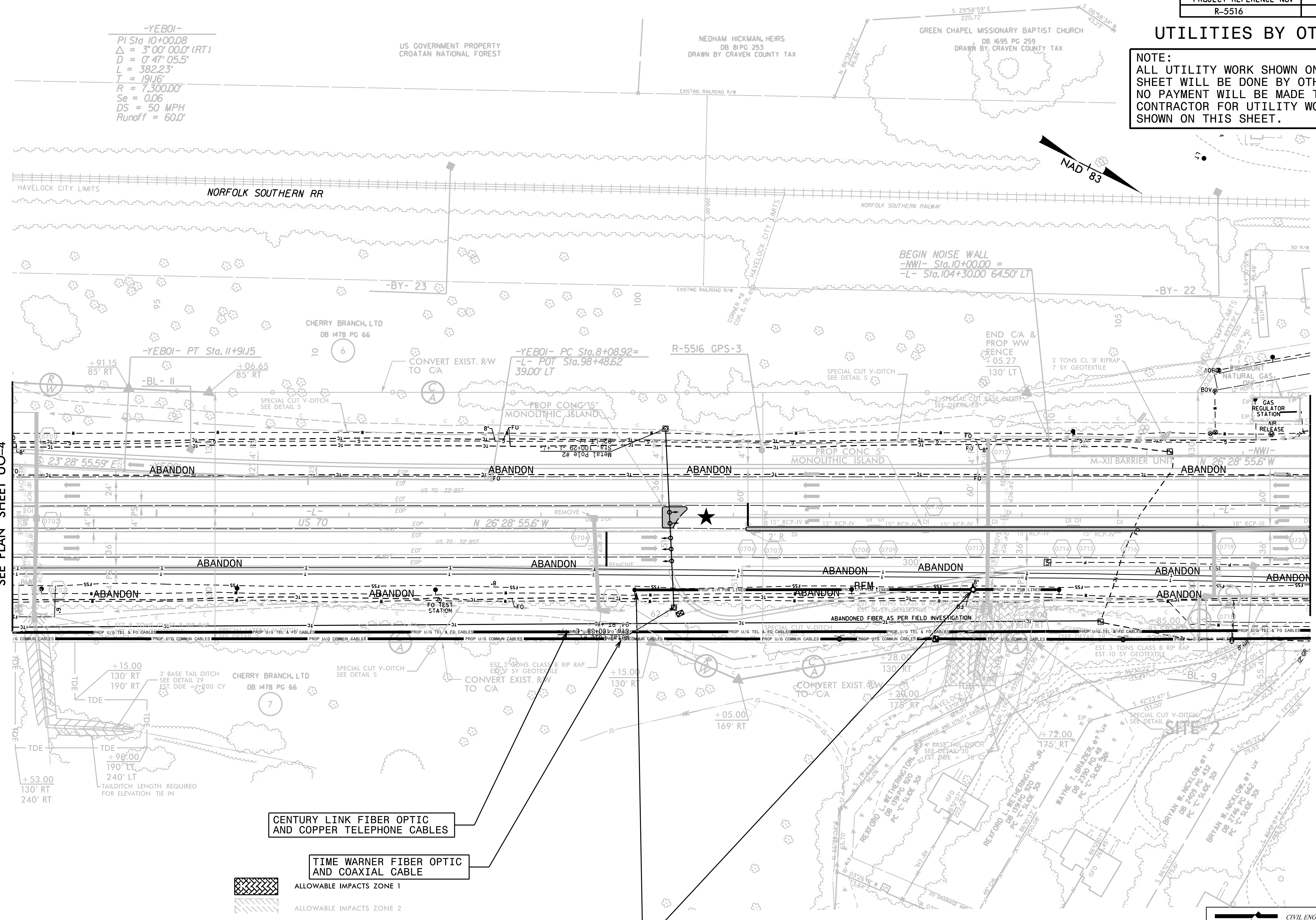
NEDHAM HICKMAN, HEIRS
DB 81 PG 253
DRAWN BY CRAVEN COUNTY TAX

GREEN CHAPEL MISSIONARY BAPTIST CHURCH
DB 1695 PG 259
DRAWN BY CRAVEN COUNTY TAX



MATCHLINE -L- /-YEB01-
STA 93+50.00 /STA 13+07.88
SEE PLAN SHEET UO-4

MATCHLINE -L- STA 107+00.00
SEE PLAN SHEET UO-6



CENTURY LINK FIBER OPTIC AND COPPER TELEPHONE CABLES

TIME WARNER FIBER OPTIC AND COAXIAL CABLE

THE CITY OF NEW BERN ELECTRIC TO MAINTAIN 20' MINIMUM OF CLEARANCE TO NCDOT SIGNAL FACILITIES



KCI
ASSOCIATES OF N.C.

CIVIL ENGINEERS
ENVIRONMENTAL - CEI
LAND SURVEYING
SUBSURFACE UTILITY ENGINEERING

4505 FALLS OF NEUSE ROAD
SUITE 400
RALEIGH, NORTH CAROLINA 27609
(919) 783-9214
WWW.KCI.COM

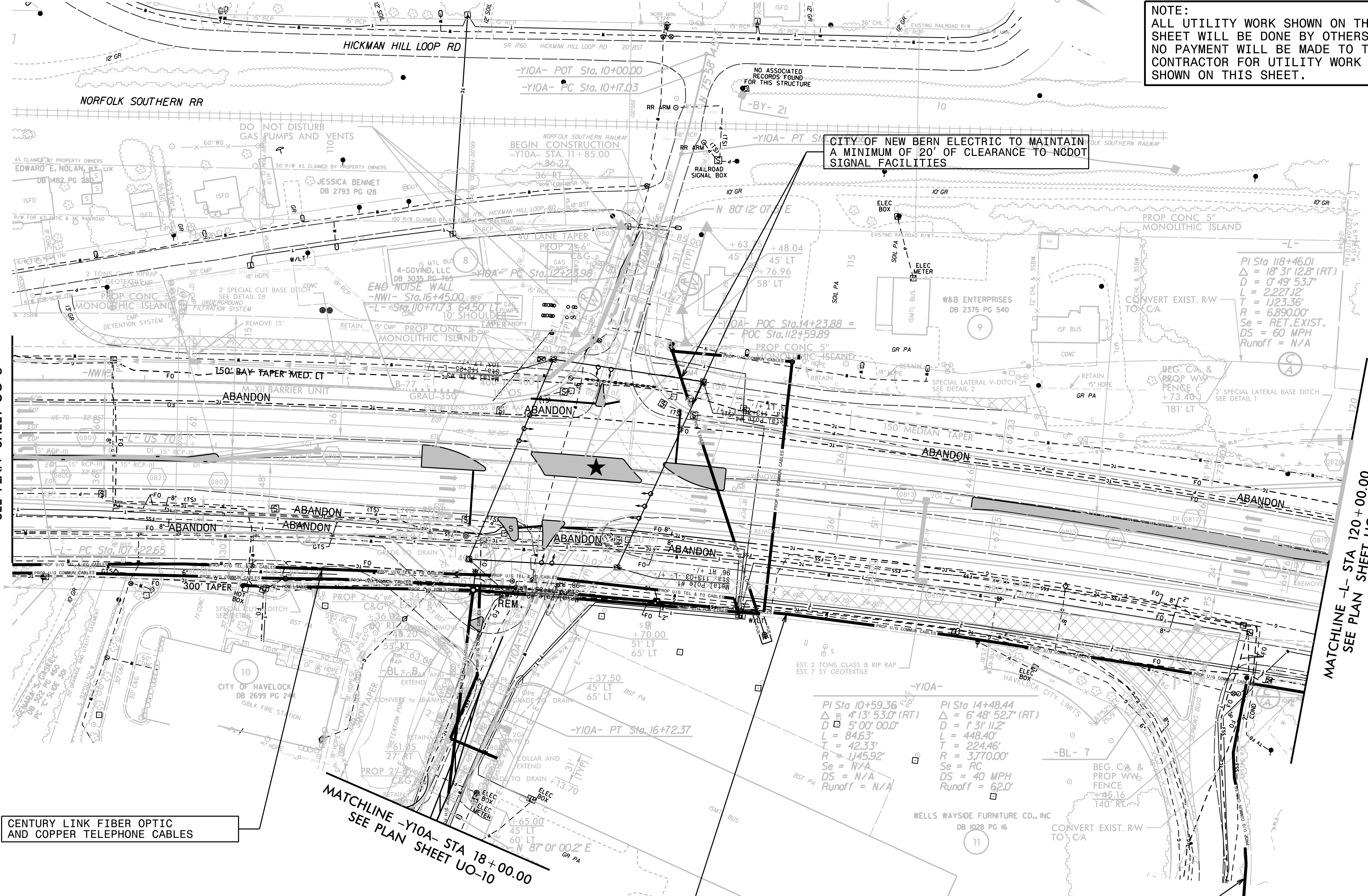
5/14/99
 7:05:56 AM
 290_08556_5516_ut_rdy7_U005_psh.dgn

UTILITIES BY OTHERS

NOTE:
ALL UTILITY WORK SHOWN ON THIS SHEET WILL BE DONE BY OTHERS. NO PAYMENT WILL BE MADE TO THE CONTRACTOR FOR UTILITY WORK SHOWN ON THIS SHEET.

MATCHLINE -L- STA 107+00.00
SEE PLAN SHEET UO-5

MATCHLINE -L- STA 120+00.00
SEE PLAN SHEET UO-7



CITY OF NEW BERN ELECTRIC TO MAINTAIN A MINIMUM OF 20' OF CLEARANCE TO NCDOT SIGNAL FACILITIES.

CENTURY LINK FIBER OPTIC AND COPPER TELEPHONE CABLES

MATCHLINE -Y10A- STA 18+00.00
SEE PLAN SHEET UO-10

TIME WARNER FIBER OPTIC AND COAXIAL CABLE

TIME WARNER RELOCATIONS TO EXTEND BEYOND PLANS

KCI
ASSOCIATES OF N.C.

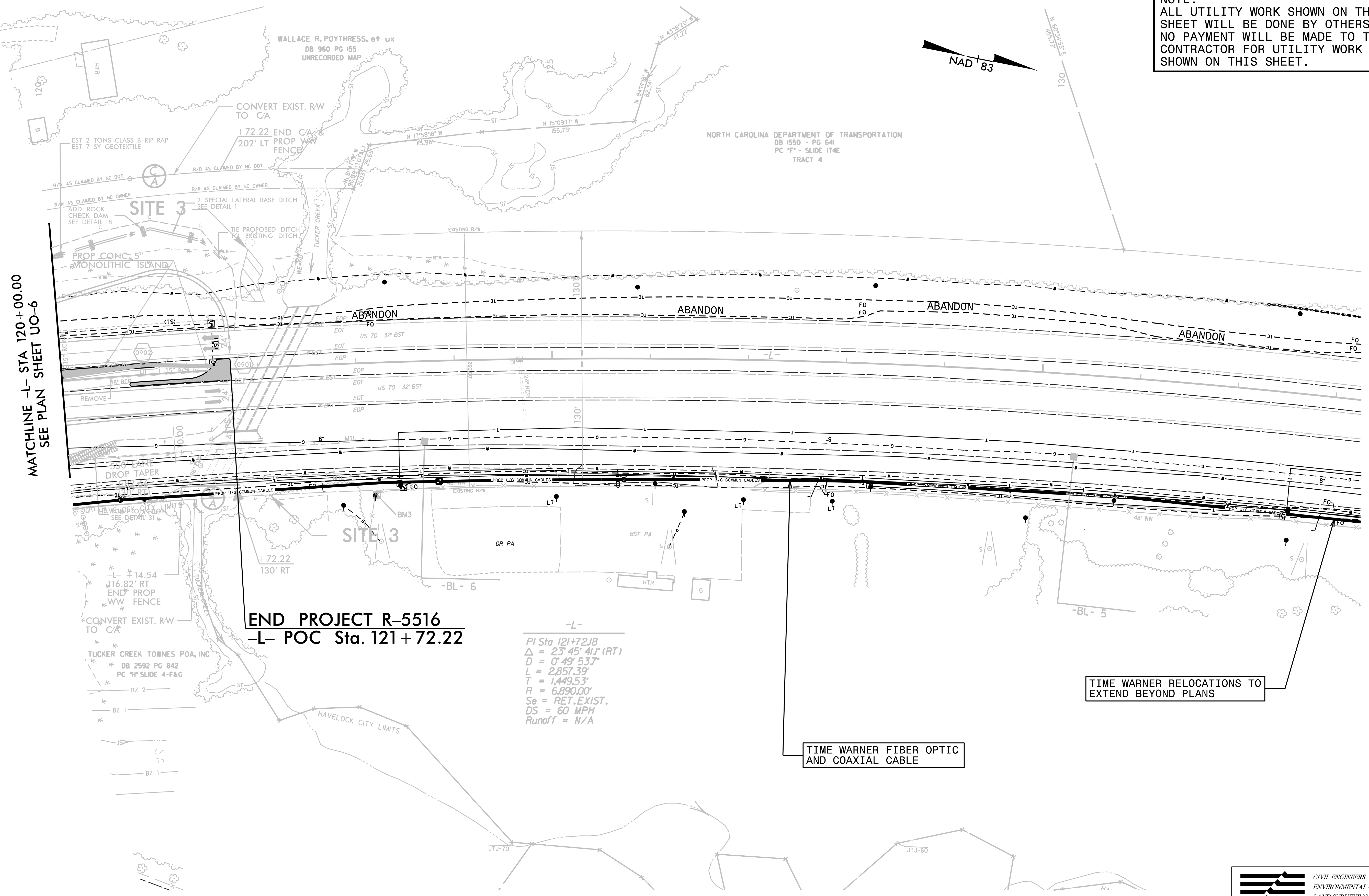
CIVIL ENGINEERS
ENVIRONMENTAL - CEI
LAND SURVEYING
SUBSURFACE UTILITY ENGINEERING

4505 FALLS OF NEUSE ROAD
SUITE 400
RALEIGH, NORTH CAROLINA 27609
(919) 783-9214
WWW.KCI.COM

5/14/99
7:06:18 AM
290_100616_ut_rdy8_U006_psh.dgn

UTILITIES BY OTHERS

NOTE:
ALL UTILITY WORK SHOWN ON THIS SHEET WILL BE DONE BY OTHERS. NO PAYMENT WILL BE MADE TO THE CONTRACTOR FOR UTILITY WORK SHOWN ON THIS SHEET.



MATCHLINE -L- STA 120+00.00
SEE PLAN SHEET UO-6

END PROJECT R-5516
-L- POC Sta. 121+72.22

-L-
 $PI\ Sta\ 121+72.18$
 $\Delta = 23^\circ 45' 41.1" (RT)$
 $D = 0' 49' 53.7"$
 $L = 2,857.39'$
 $T = 1,449.53'$
 $R = 6,890.00'$
 $Se = RET. EXIST.$
 $DS = 60\ MPH$
 $Runoff = N/A$

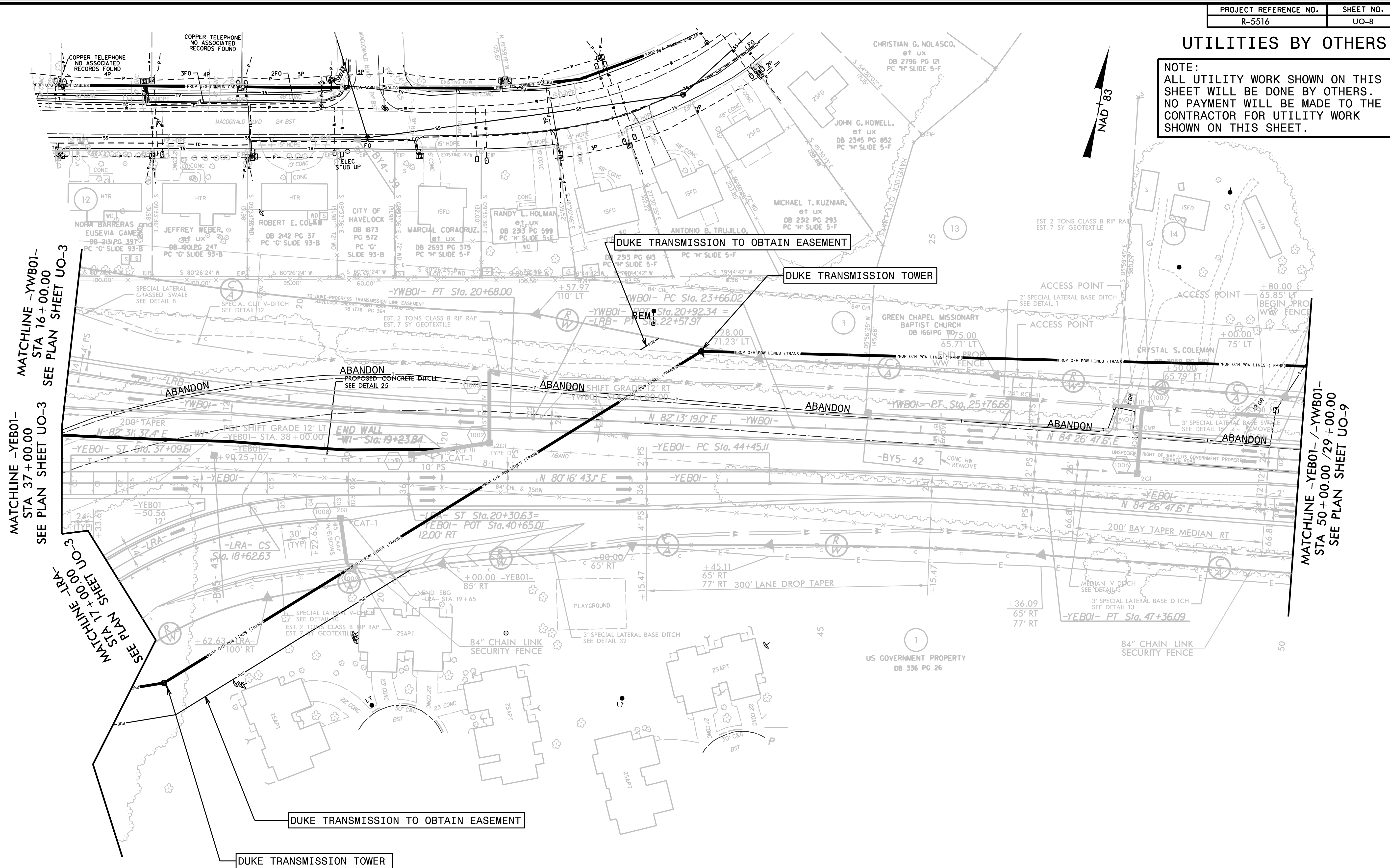
TIME WARNER FIBER OPTIC
AND COAXIAL CABLE

TIME WARNER RELOCATIONS TO
EXTEND BEYOND PLANS

5/14/99
7/06/98
290_0877_5516_ut_rdy9_U007_psh.dgn

UTILITIES BY OTHERS

NOTE:
ALL UTILITY WORK SHOWN ON THIS SHEET WILL BE DONE BY OTHERS. NO PAYMENT WILL BE MADE TO THE CONTRACTOR FOR UTILITY WORK SHOWN ON THIS SHEET.

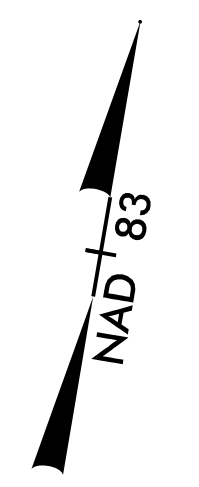


MATCHLINE -YWB01-
STA 16+00.00
SEE PLAN SHEET UO-3

MATCHLINE -YEB01-
STA 37+00.00
SEE PLAN SHEET UO-3

MATCHLINE -LRA-
STA 17+00.00
SEE PLAN SHEET UO-3

MATCHLINE -YWB01- / -YEB01-
STA 50+00.00 / 29+00.00
SEE PLAN SHEET UO-9



5/14/99
7:06:59 AM
290_0085-5516_ut_r.dwg
10.0008_esh.dgn

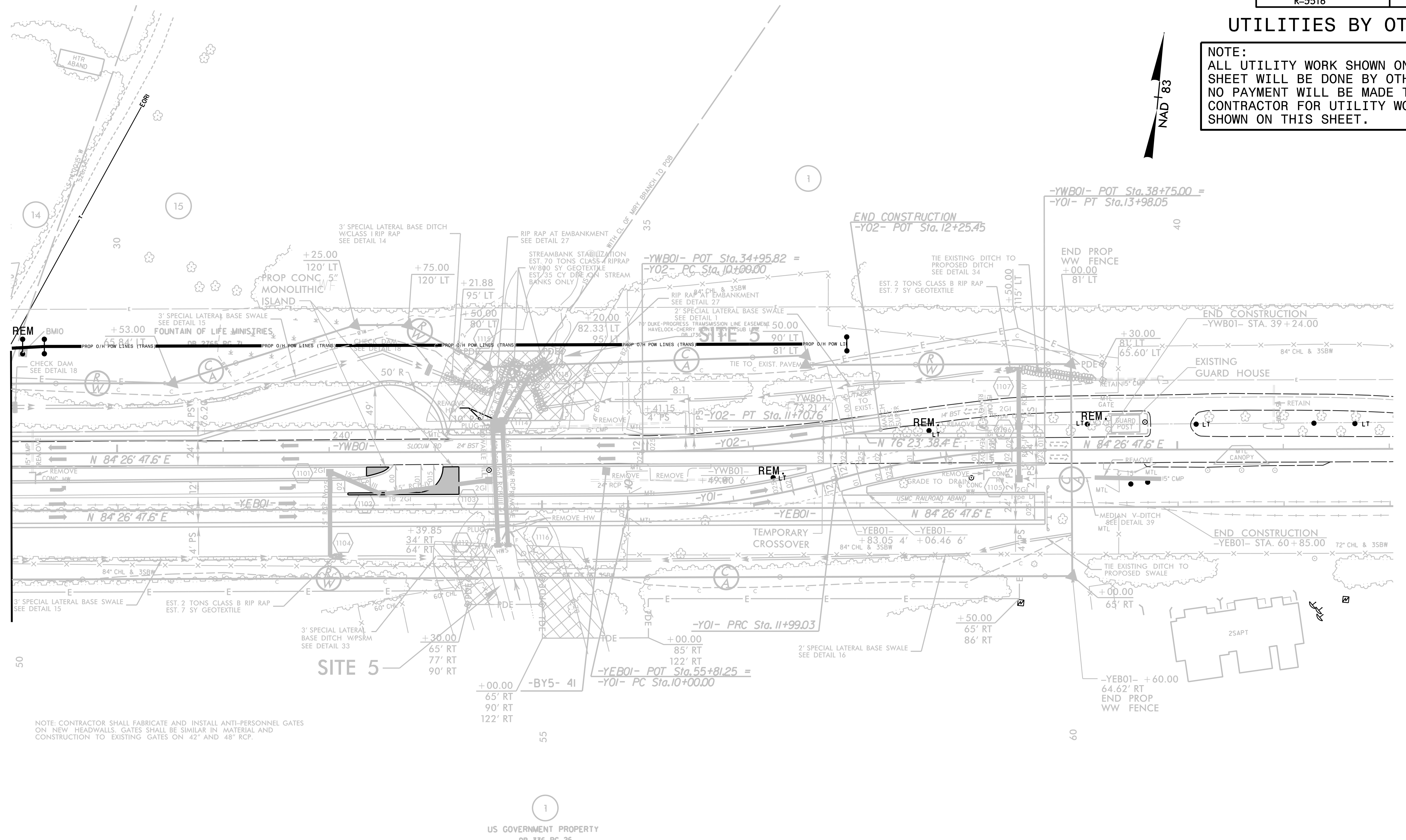
UTILITIES BY OTHERS

NOTE:
ALL UTILITY WORK SHOWN ON THIS SHEET WILL BE DONE BY OTHERS. NO PAYMENT WILL BE MADE TO THE CONTRACTOR FOR UTILITY WORK SHOWN ON THIS SHEET.

5/14/99

290 10000 16 AM 16.00 ut.rdijl1.UO09_psh.dgn

MATCHLINE -YEB01- / -YWBO1-
STA 50+00.00 / 29+00.00
SEE PLAN SHEET UO-8



UTILITIES BY OTHERS

NOTE:
ALL UTILITY WORK SHOWN ON THIS SHEET WILL BE DONE BY OTHERS. NO PAYMENT WILL BE MADE TO THE CONTRACTOR FOR UTILITY WORK SHOWN ON THIS SHEET.

MATCHLINE -Y10A- STA 18+00.00
SEE PLAN SHEET UO-6

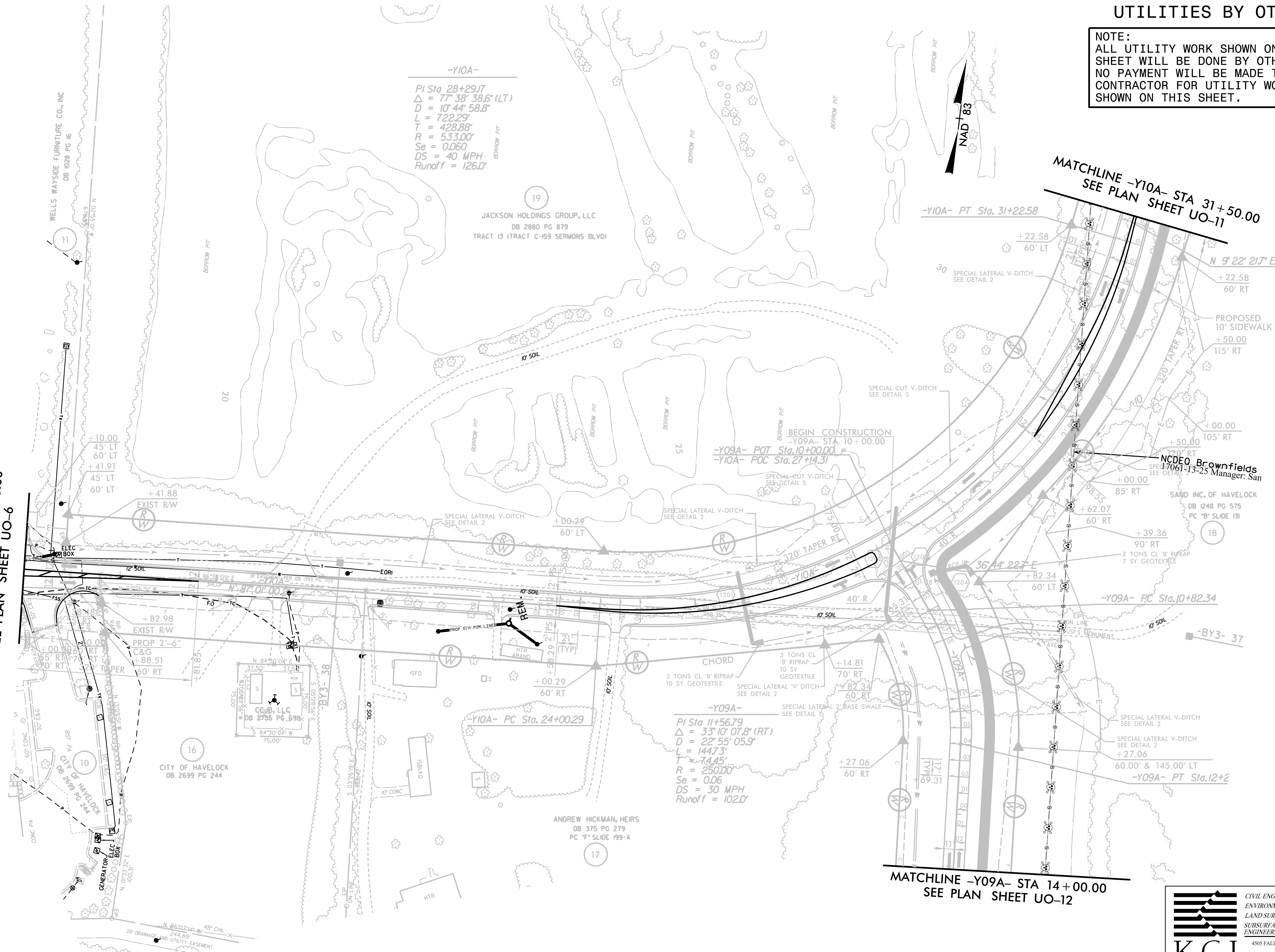
MATCHLINE -Y09A- STA 14+00.00
SEE PLAN SHEET UO-12

-Y10A-
 $PI\ Sta\ 28+29.17$
 $\Delta = 77^\circ 38' 38.6" (LT)$
 $D = 10' 44' 58.8"$
 $L = 722.29'$
 $T = 428.88'$
 $R = 533.00'$
 $Se = 0.060$
 $DS = 40\ MPH$
 $Runoff = 126.0'$

BEGIN CONSTRUCTION
 -Y09A- STA. 10+00.00
 -Y10A- POC Sta. 27+14.31

-Y09A-
 $PI\ Sta\ 11+56.79$
 $\Delta = 33^\circ 10' 07.8" (RT)$
 $D = 22' 55' 05.9"$
 $L = 144.73'$
 $T = 74.45'$
 $R = 250.00'$
 $Se = 0.06$
 $DS = 30\ MPH$
 $Runoff = 102.0'$

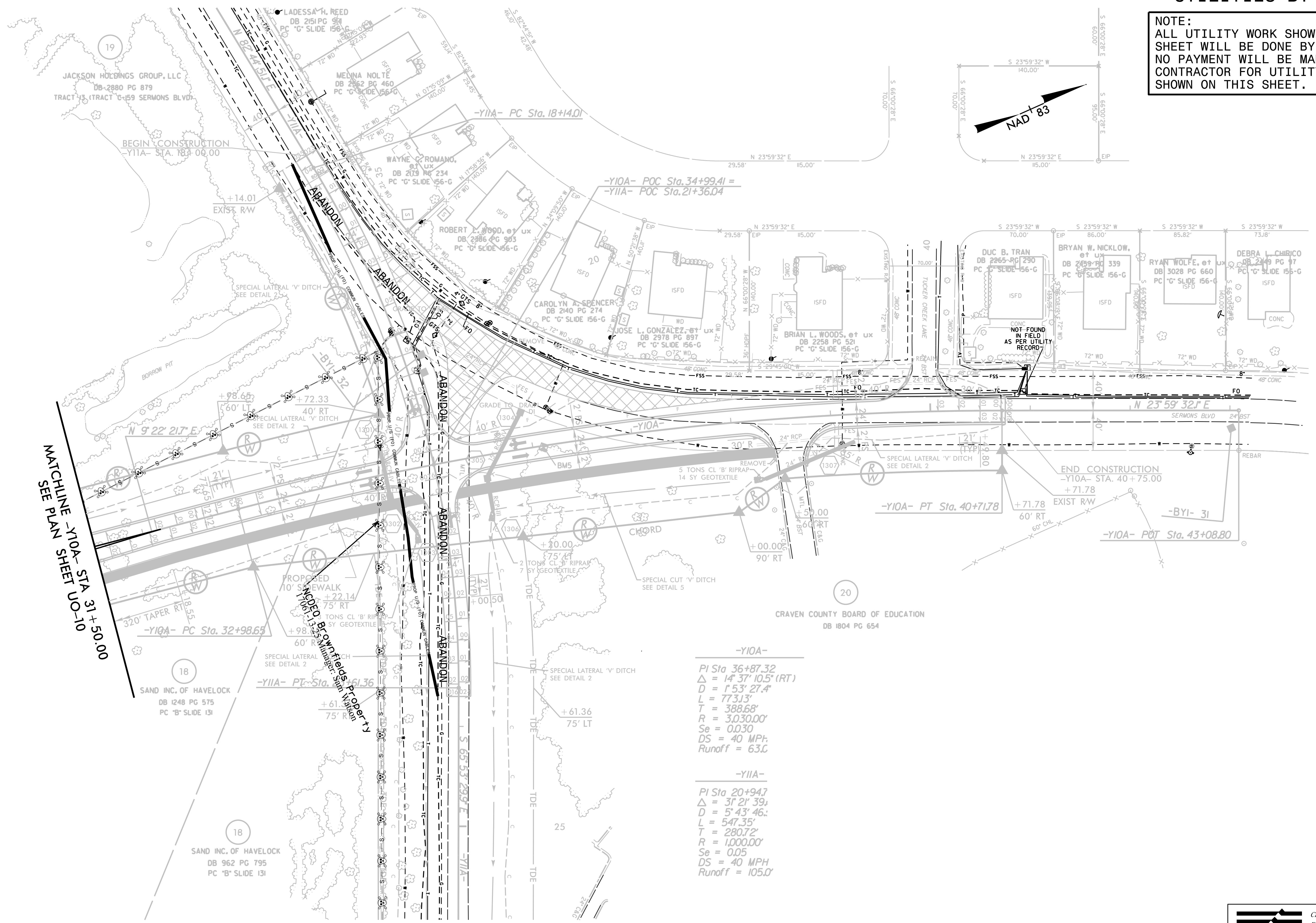
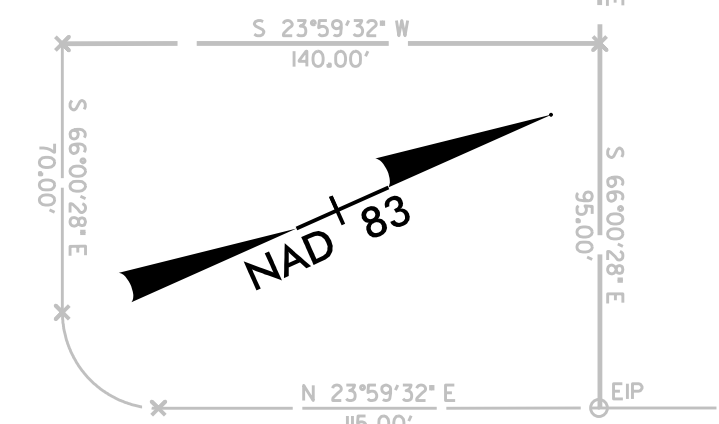
5/14/99
 T:\07_41\AV\6-ut-r.dwg\12_U0010_psh.dgn
 290_00_1516_16-ut-r.dwg\12_U0010_psh.dgn




 CIVIL ENGINEERS
 ENVIRONMENTAL - CEI
 LAND SURVEYING
 SUBSURFACE UTILITY
 ENGINEERING
 4505 FALLS OF NEUSE ROAD
 SUITE 400
 RALEIGH, NORTH CAROLINA 27609
 (919) 783-9214
 WWW.KCI.COM

UTILITIES BY OTHERS

NOTE:
ALL UTILITY WORK SHOWN ON THIS SHEET WILL BE DONE BY OTHERS. NO PAYMENT WILL BE MADE TO THE CONTRACTOR FOR UTILITY WORK SHOWN ON THIS SHEET.



MATCHLINE -Y10A- STA 31+50.00
SEE PLAN SHEET UO-10

-Y10A-
 PI Sta 36+87.32
 $\Delta = 14^{\circ} 37' 10.5" (RT)$
 $D = 1^{\circ} 53' 27.4"$
 $L = 77.313'$
 $T = 388.68'$
 $R = 3,030.00'$
 $Se = 0.030$
 $DS = 40 MPH$
 $Runoff = 63.0$

-Y11A-
 PI Sta 20+94.7
 $\Delta = 31^{\circ} 21' 39"$
 $D = 5^{\circ} 43' 46."$
 $L = 547.35'$
 $T = 280.72'$
 $R = 1,000.00'$
 $Se = 0.05$
 $DS = 40 MPH$
 $Runoff = 105.0$

5/14/99
 7:08:07 AM
 290_000_0516_ut_r.dwg\3_UO011.psh.dgn

UTILITIES BY OTHERS

NOTE:
ALL UTILITY WORK SHOWN ON THIS SHEET WILL BE DONE BY OTHERS. NO PAYMENT WILL BE MADE TO THE CONTRACTOR FOR UTILITY WORK SHOWN ON THIS SHEET.

PUMP STATION EASEMENT TO BE OBTAINED BY THE CITY OF HAVELOCK

TEMPORARY CONSTRUCTION EASEMENT TO BE OBTAINED BY THE CITY OF HAVELOCK

UTILITY EASEMENT TO BE OBTAINED BY THE CITY OF HAVELOCK

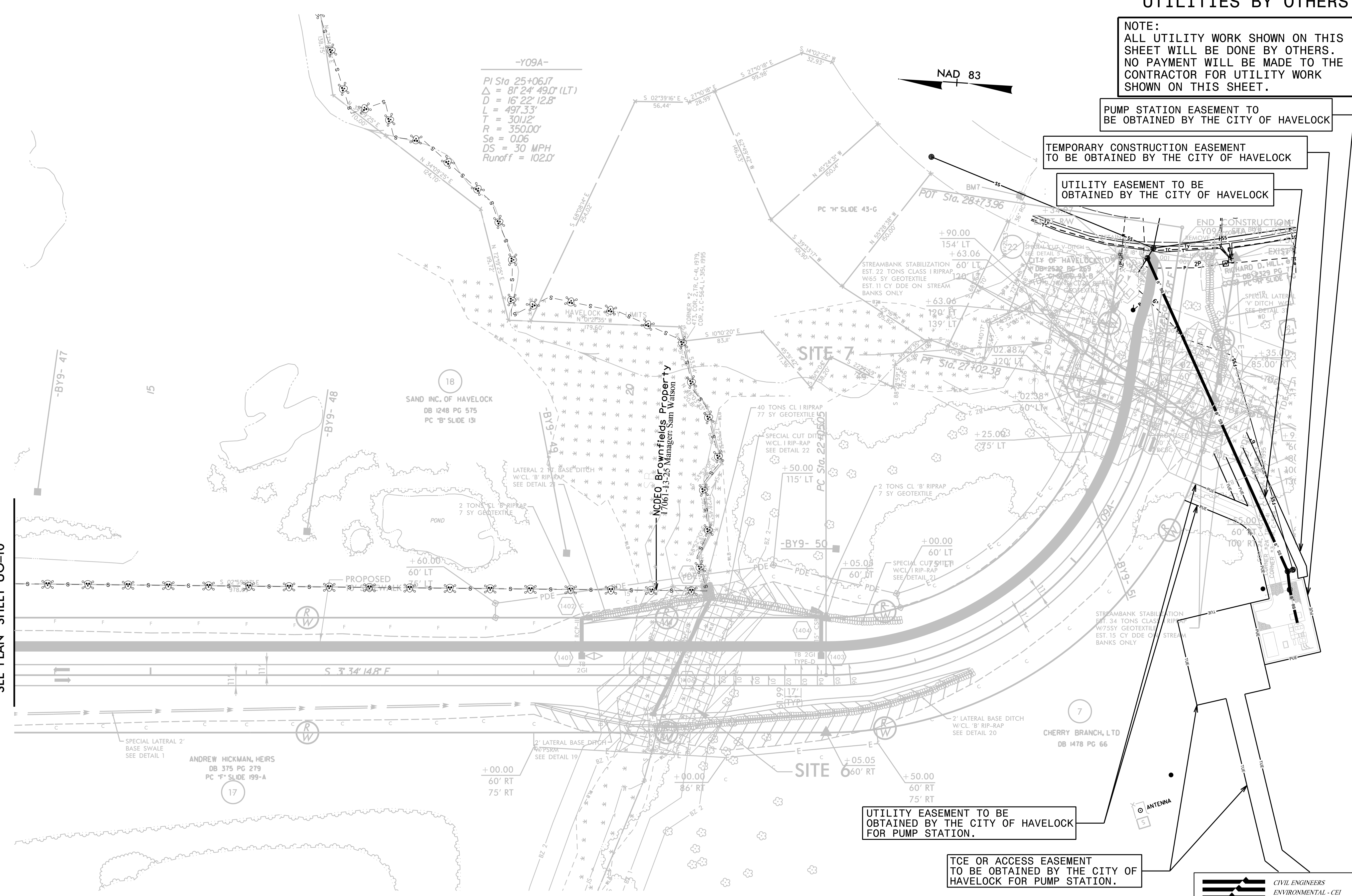
UTILITY EASEMENT TO BE OBTAINED BY THE CITY OF HAVELOCK FOR PUMP STATION.

TCE OR ACCESS EASEMENT TO BE OBTAINED BY THE CITY OF HAVELOCK FOR PUMP STATION.

MATCHLINE -Y09A- STA 14+00.00
SEE PLAN SHEET UO-10

-Y09A-
PI Sta 25+06.17
 $\Delta = 81^{\circ} 24' 49.0" (LT)$
 $D = 16' 22" 12.8"$
 $L = 497.33'$
 $T = 301.12'$
 $R = 350.00'$
 $Se = 0.06$
 $DS = 30 MPH$
 $Runoff = 102.0'$

NAD 83



5/14/99
290.00025 5/16 ut_r.dwg 14_u0012_psh.dgn