

NOTES:

STIRRUPS AND "U" BARS IN CAP MAY BE SHIFTED AS NECESSARY TO CLEAR ANCHOR BOLTS.

T BARS IN TOP OF FOOTING MAY BE SHIFTED AS NECESSARY TO CLEAR M1 BARS IN FOOTING.

HOOKS ON M1 BARS MAY BE TURNED AS NECESSARY FOR PLACING REINFORCING STEEL.

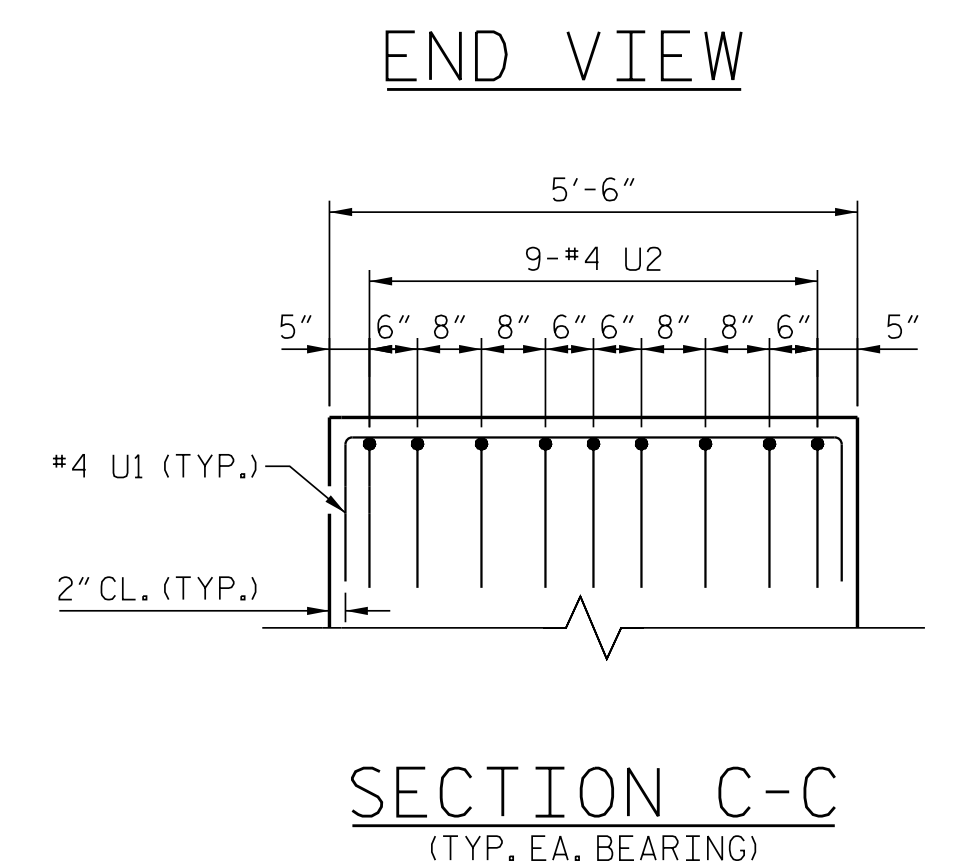
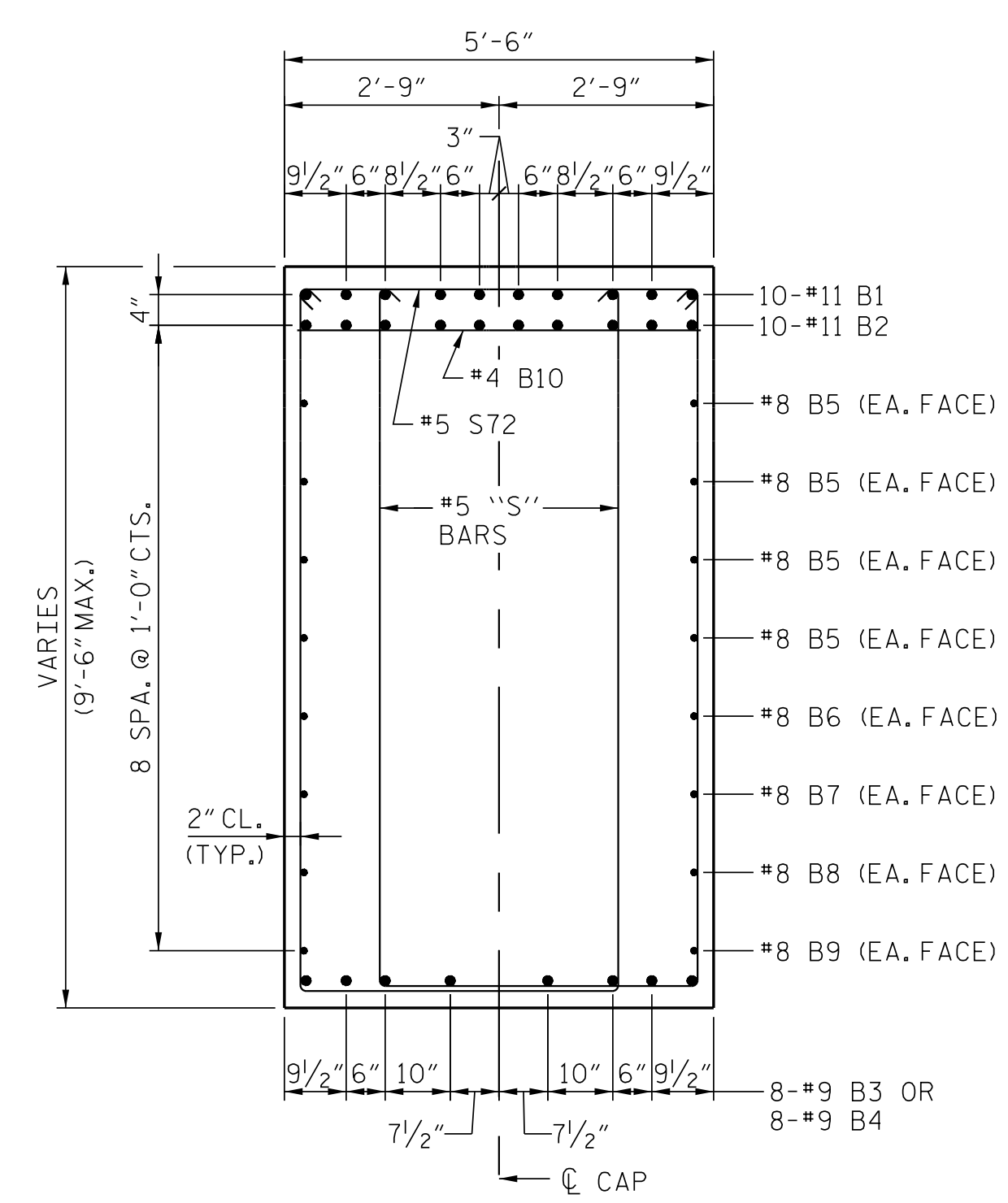
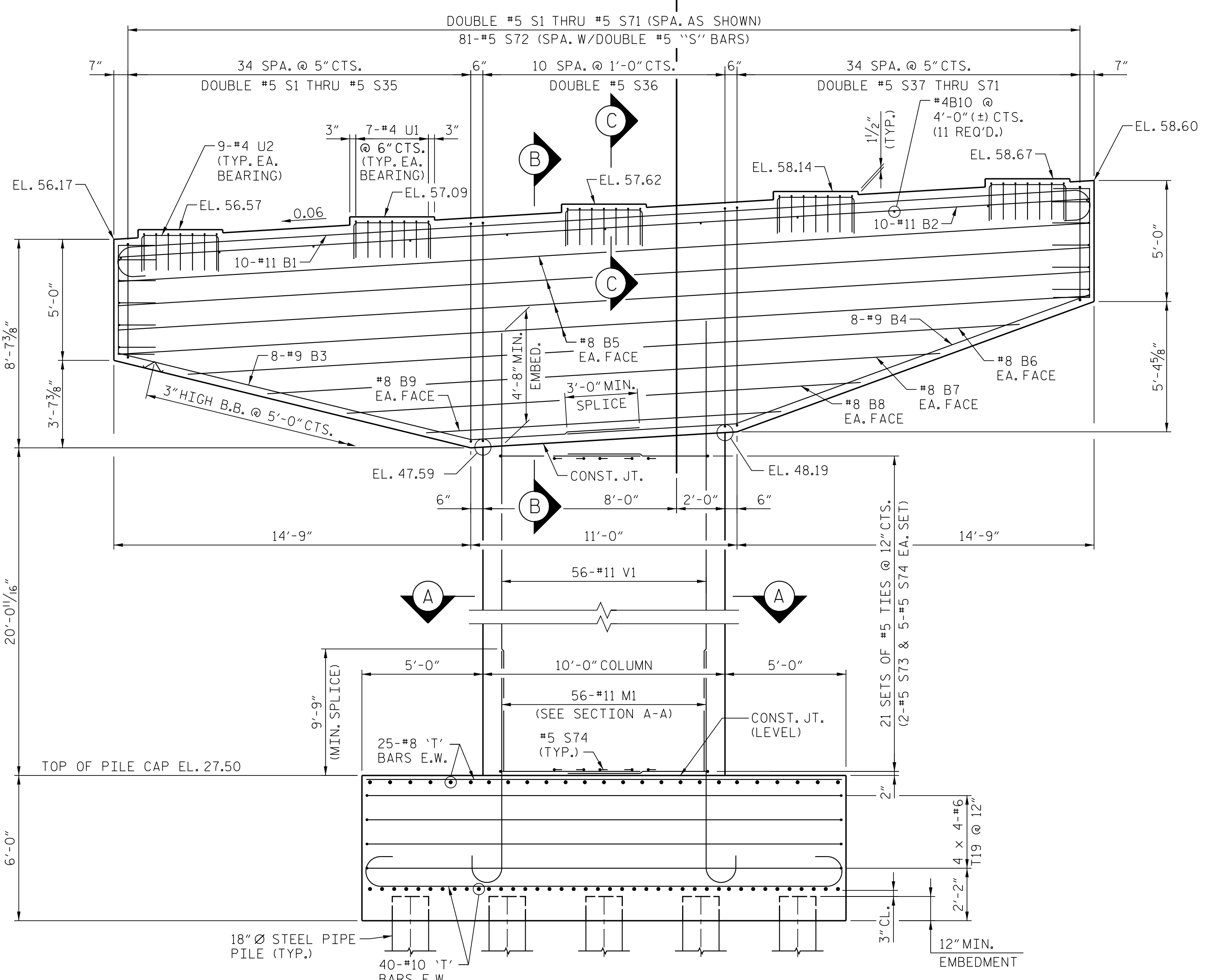
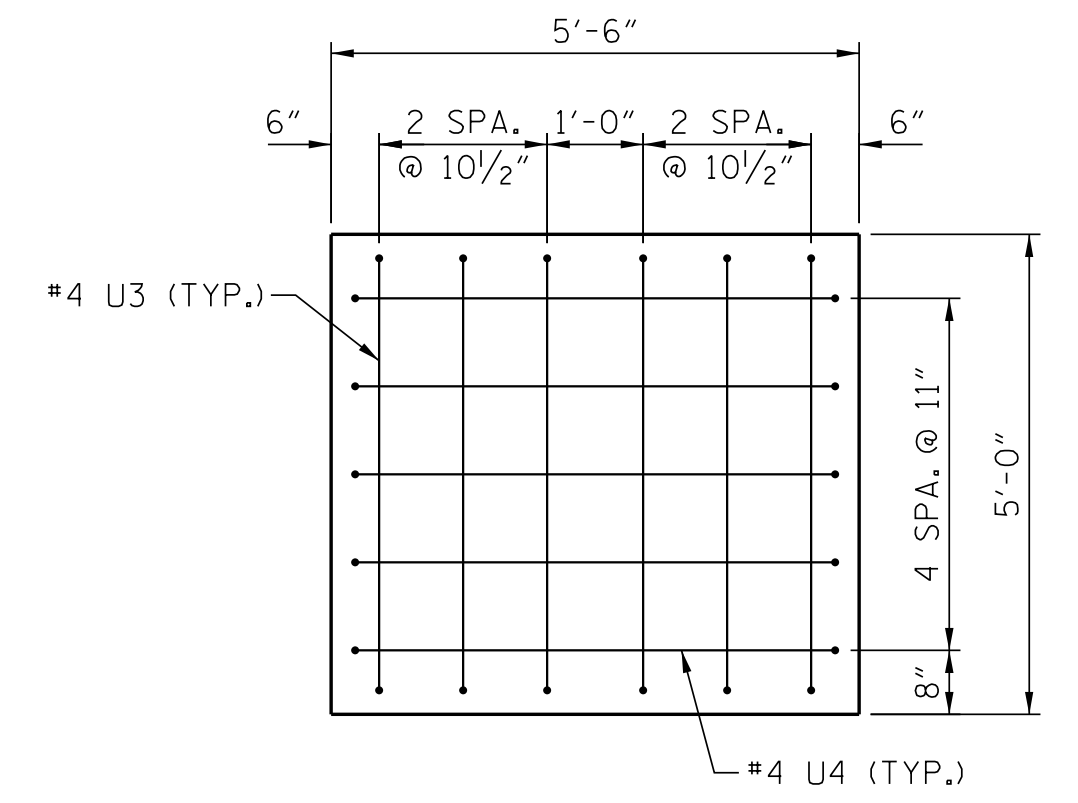
FOR PILE SPLICE DETAILS, SEE "PIPE PILE" SHEET.

DETAILED DRAWINGS FOR FALSEWORK AND FORMS FOR THIS HAMMERHEAD BENT CAP SHALL BE SUBMITTED, SEE SHEET SN.

GALVANIZE THE TOP OF EACH PILE A MINIMUM 24 FEET, GALVANIZE IN ACCORDANCE WITH SECTION 1076 OF THE STANDARD SPECIFICATIONS.

FOR SECTION A-A, SEE SHEET 2 OF 3.

FOR MASS CONCRETE, SEE SPECIAL PROVISIONS.



PROJECT NO. R-5516

CRAVEN COUNTY

STATION: 32+25.84 -YEB01-
75+13.29 -L-

SHEET 1 OF 3

AECOM

AECOM TECHNICAL SERVICES, INC.
701 CORPORATE CENTER DRIVE, SUITE 475
RALEIGH, NC 27607
(919) 854-6200 www.aecom.com
AECOM License No. F-0342

4/12/2017

NORTH CAROLINA PROFESSIONAL SEAL 030474

ENGINEER JOHN C. MORRISON

DocuSigned by: John C. Morrison

STATE OF NORTH CAROLINA
DEPARTMENT OF TRANSPORTATION
RALEIGH

SUBSTRUCTURE

BENT 2
PLAN AND ELEVATION

REVISIONS					
NO.	BY:	DATE:	NO.	BY:	DATE:
1			3		
2			4		

SHEET NO. **S-40**

TOTAL SHEETS **51**

DRAWN BY : SGS DATE : 2/16

CHECKED BY : JCM DATE : 2/16

DESIGN E.O.R. : JCM DATE : 2/16

DOCUMENT NOT CONSIDERED FINAL UNLESS ALL SIGNATURES COMPLETED

DATE: 4/12/2017 TIME: 5:24:40 PM

USER: jcm15535 D:\A4E5FE0-47DE-40D8-BB2B-575DF8A9371\Road\400_Technical\408_Structure\Code\401_200_S40_R5516_SML_B201.dgn