

NOTES:

STIRRUPS AND "U" BARS IN CAP MAY BE SHIFTED AS NECESSARY TO CLEAR ANCHOR BOLTS AND PIPE INSERTS.

"T" BARS IN TOP OF FOOTING MAY BE SHIFTED AS NECESSARY TO CLEAR M1 BARS IN FOOTING.

HOOKS ON M1 BARS MAY BE TURNED AS NECESSARY FOR PLACING REINFORCING STEEL.

FOR PILE SPLICE DETAILS, SEE "PIPE PILE" SHEET.

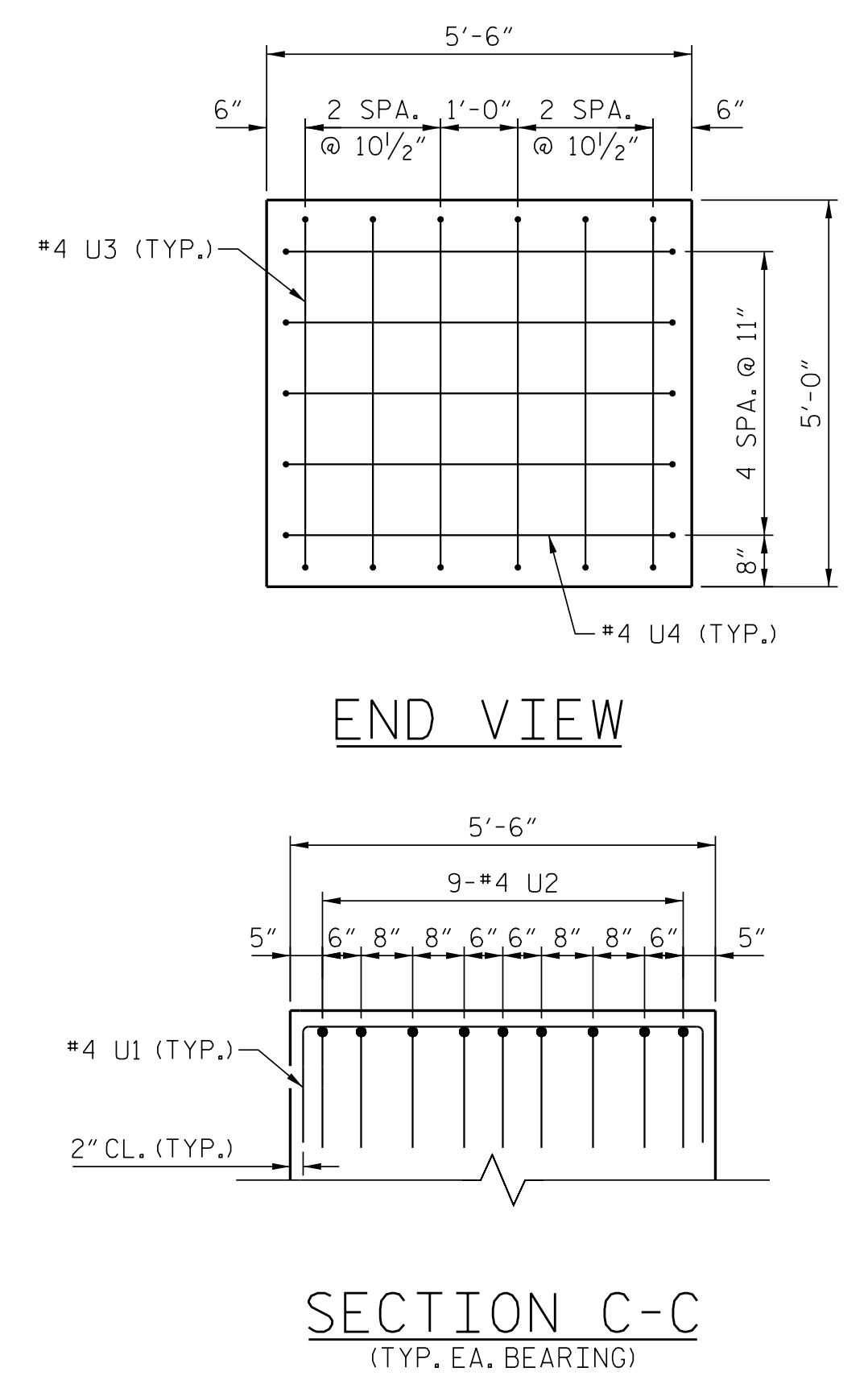
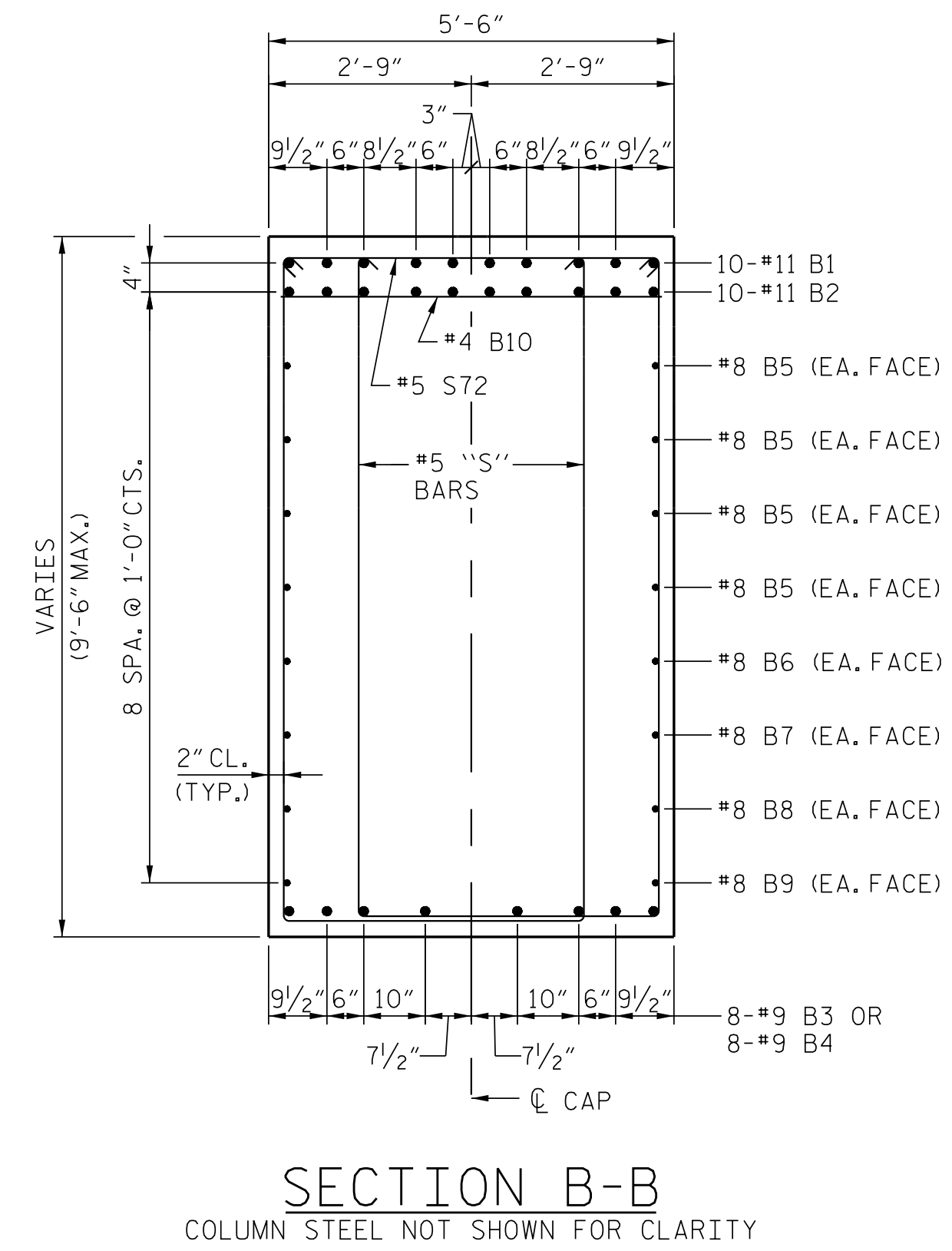
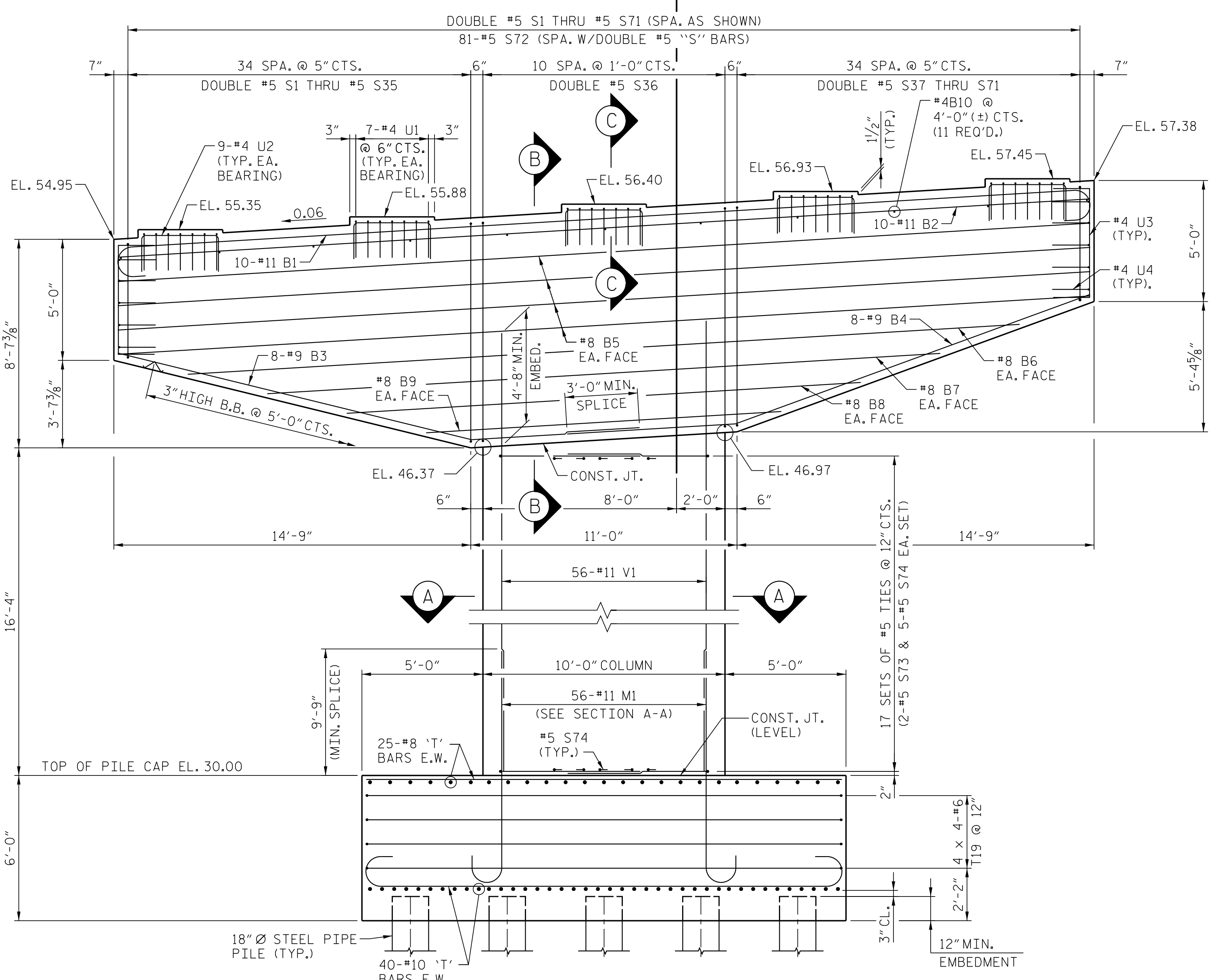
DETAILED DRAWINGS FOR FALSEWORK AND FORMS FOR THIS HAMMERHEAD BENT CAP SHALL BE SUBMITTED, SEE SHEET SN.

FOR PIPE INSERT DETAILS, SEE "DISC BEARING" SHEET.

GALVANIZE THE TOP OF EACH PILE A MINIMUM OF 24 FEET, GALVANIZE IN ACCORDANCE WITH SECTION 1076 OF THE STANDARD SPECIFICATIONS.

FOR SECTION A-A, SEE SHEET 2 OF 3.

FOR MASS CONCRETE, SEE SPECIAL PROVISIONS.



PROJECT NO. R-5516
CRAVEN COUNTY
 STATION: 32+25.84 -YEB01-
75+13.29 -L-
 SHEET 1 OF 3

AECOM
AECOM TECHNICAL SERVICES, INC.
 701 CORPORATE CENTER DRIVE, SUITE 475
 RALEIGH, NC 27607
 (919) 854-6200 www.aecom.com
 AECOM License No. F-0342

4/12/2017
 NORTH CAROLINA PROFESSIONAL SEAL
 030474
 JOHN C. MORRISON
 ENGINEER
DocuSigned by:
 John C. Morrison
 AZFDE142C82F4AB

STATE OF NORTH CAROLINA DEPARTMENT OF TRANSPORTATION RALEIGH					
SUBSTRUCTURE					
BENT 1 PLAN AND ELEVATION					
REVISIONS					SHEET NO.
NO.	BY:	DATE:	NO.	BY:	DATE:
1			3		
2			4		
					TOTAL SHEETS 51

DRAWN BY : SGS DATE : 2/16
 CHECKED BY : JCM DATE : 2/16
 DESIGN E.O.R. : JCM DATE : 2/16

DOCUMENT NOT CONSIDERED
 FINAL UNLESS ALL
 SIGNATURES COMPLETED

DATE: 4/12/2017 TIME: 5:44:44 PM
 USER: jcmr1693c DGN: R:\6328444_Sigcom_Road\MO_Technical\Bent_Structure\Cada\40_LBS_S37_A6516_SML_B10.dgn