

NOTES

LATERAL BRACING ASSEMBLY SHALL COMPLY WITH SECTION 1072 OF THE STANDARD SPECIFICATIONS.

ALL STRUCTURAL STEEL SHALL BE AASHTO M270 GRADE 50 AND PAINTED IN ACCORDANCE WITH SYSTEM 1 OF ARTICLE 442-8 OF THE STANDARD SPECIFICATIONS.

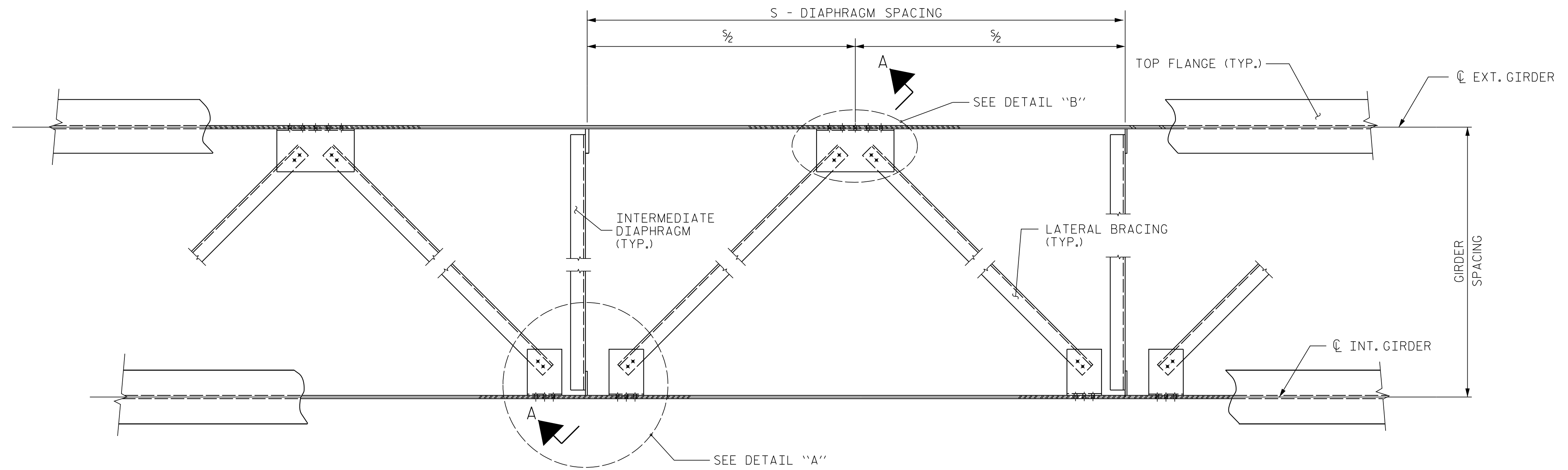
TENSION ON THE ASTM A325 BOLTS SHALL BE CALIBRATED USING DIRECT TENSION INDICATOR WASHERS IN ACCORDANCE WITH THE STANDARD SPECIFICATIONS.

ALL BOLTED CONNECTIONS SHALL BE 7/8" Ø HIGH STRENGTH BOLTS.

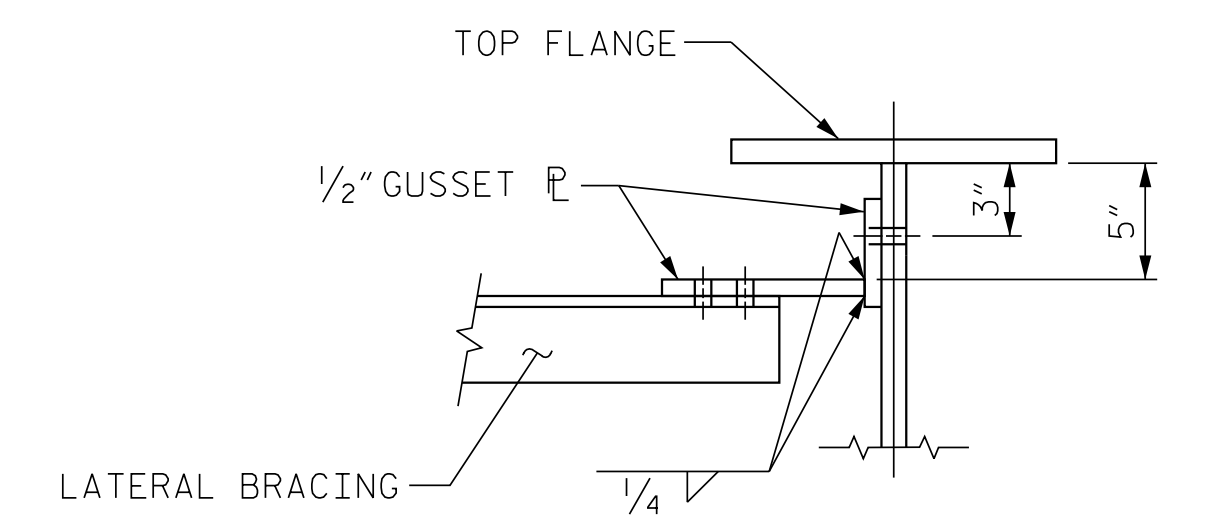
THE CONTRACTOR HAS THE OPTION TO CLIP THE PROTRUDING CORNERS OF THE GUSSET PLATES, AT NO ADDITIONAL COST TO THE DEPARTMENT.

BENT GUSSET PLATES OR ROLLED ANGLE SHAPES MAY BE SUBSTITUTED FOR THE WELDED GUSSET PLATES DETAILED IF APPROVED BY THE ENGINEER, AT NO ADDITIONAL COST TO THE DEPARTMENT.

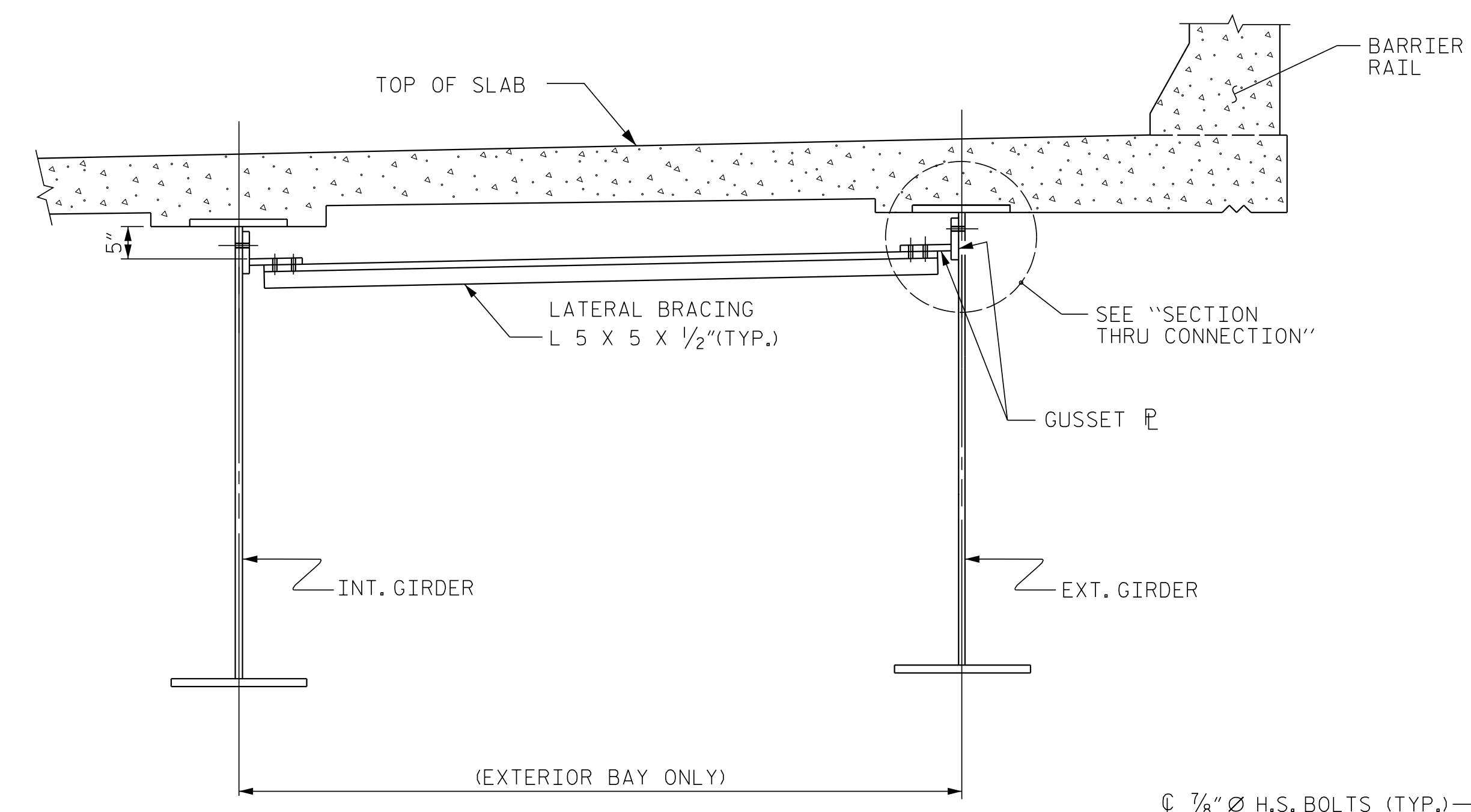
INSTALL THE LATERAL BRACING AFTER ERECTING THE EXTERIOR GIRDER AND THE ADJACENT INTERIOR GIRDER AND INSTALLING THE INTERMEDIATE DIAPHRAGMS.



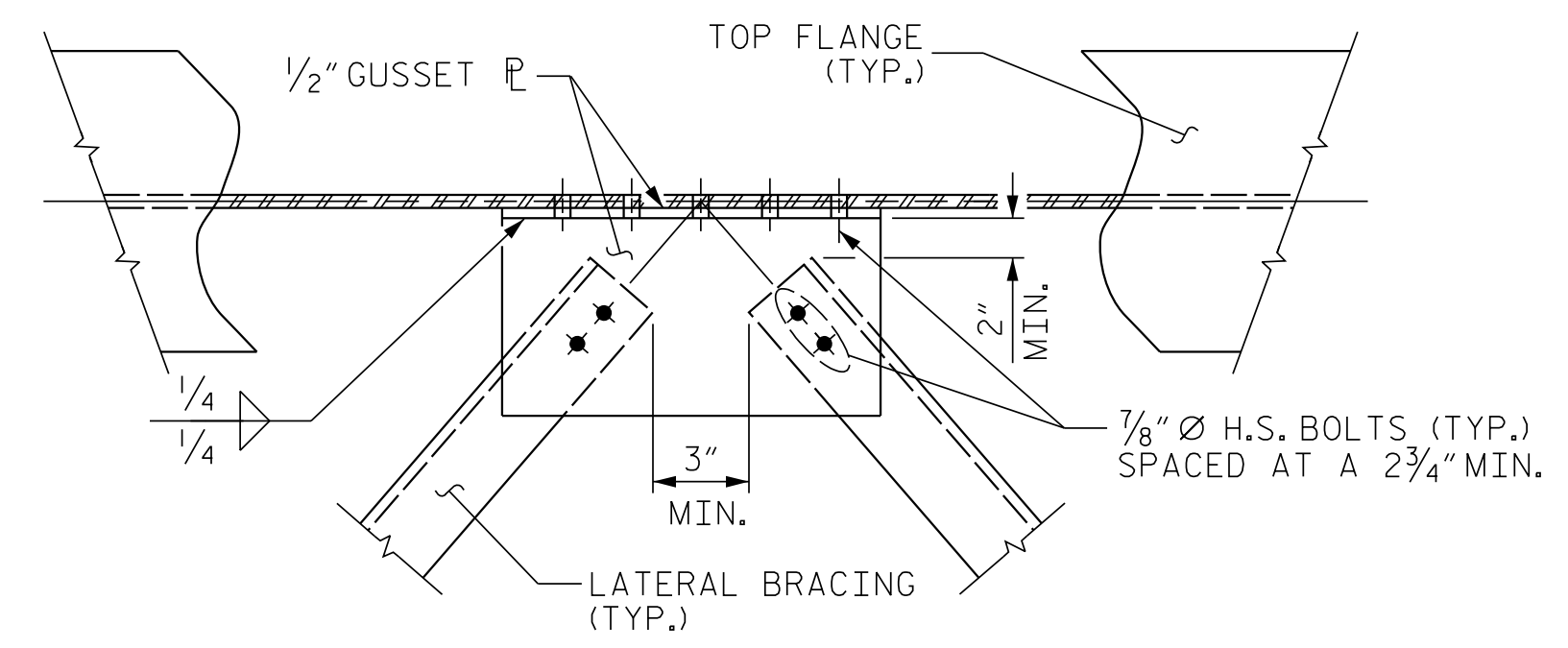
PART PLAN - NEAR TOP FLANGE LATERAL BRACING
(THROUGHOUT EXTERIOR BAYS ONLY)



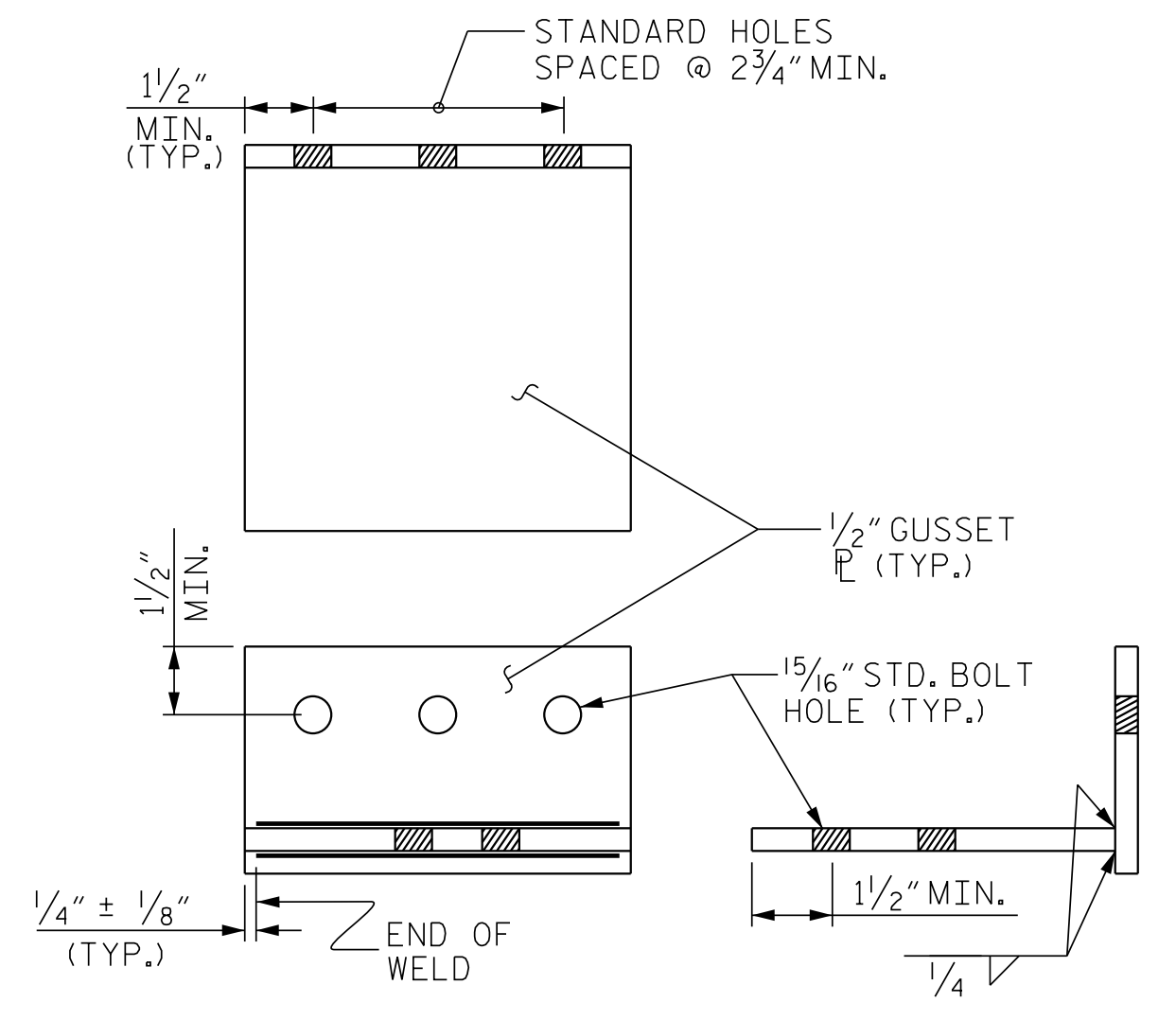
SECTION THRU CONNECTION



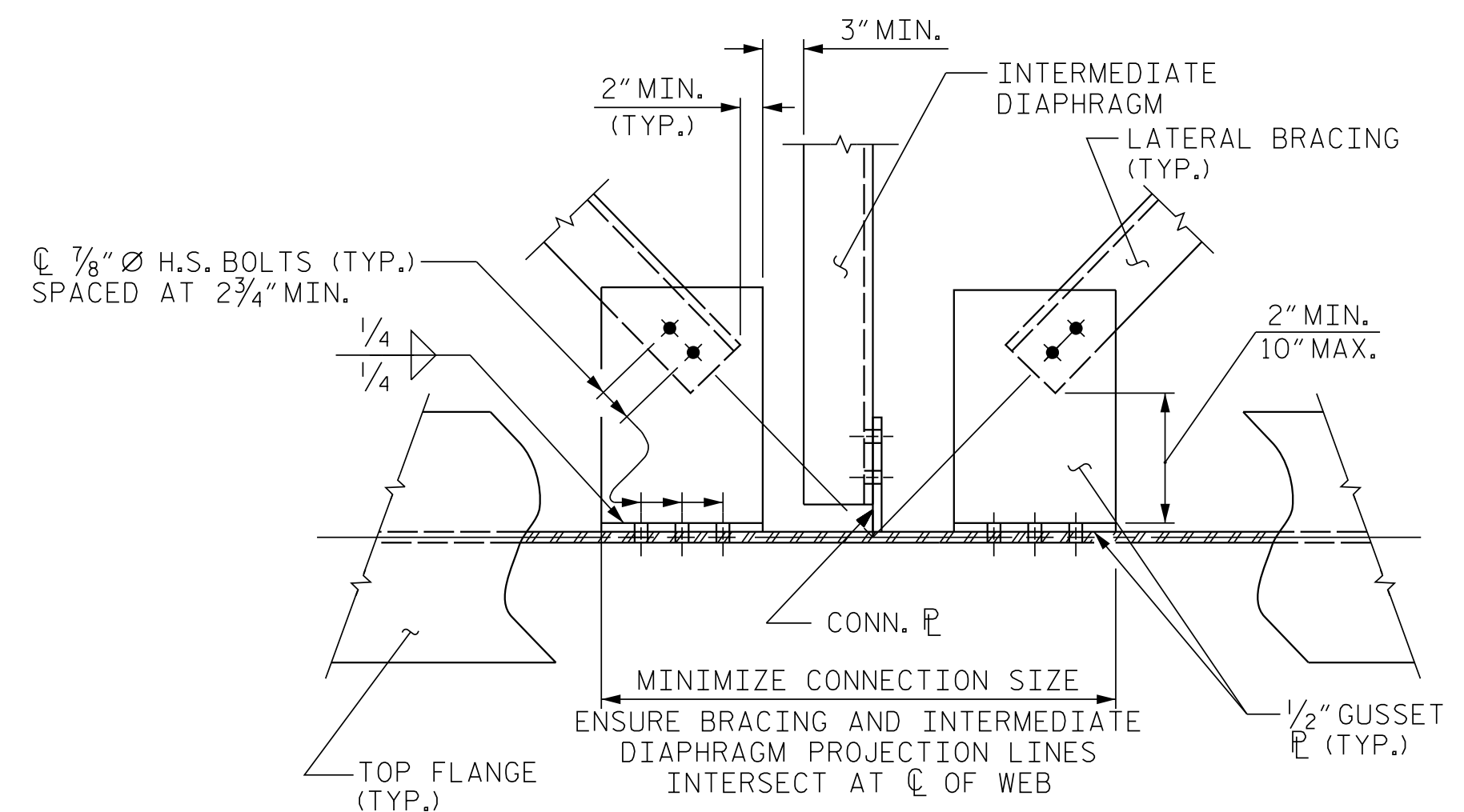
SECTION A-A



DETAIL "B"



CONNECTION DETAIL



DETAIL "A"

PROJECT NO. R-5516
CRAVEN COUNTY
 STATION: 32+25.84 -YEB01-
75+13.29 -L-
 SHEET 5 OF 5

	STATE OF NORTH CAROLINA DEPARTMENT OF TRANSPORTATION RALEIGH		STANDARD LATERAL BRACING	
	4/12/2017 		REVISIONS	
ASSEMBLED BY : N. K. BROWN DATE : 03/16 CHECKED BY : J. C. MORRISON DATE : 05/16		NO. BY: DATE: NO. BY: DATE:		SHEET NO. S-22
DRAWN BY : WMC 6/11 ADDED: 10/31/11 CHECKED BY : GM 6/11		1 2 3 4		TOTAL SHEETS 51

DOCUMENT NOT CONSIDERED FINAL UNLESS ALL SIGNATURES COMPLETED

DATE: 4/7/2017 TIME: 3:02:53 PM
 USER: R6632444_Singam RoadM400_Technical\08_Structural\040_110_522_P6516_3ML_S505.dgn