

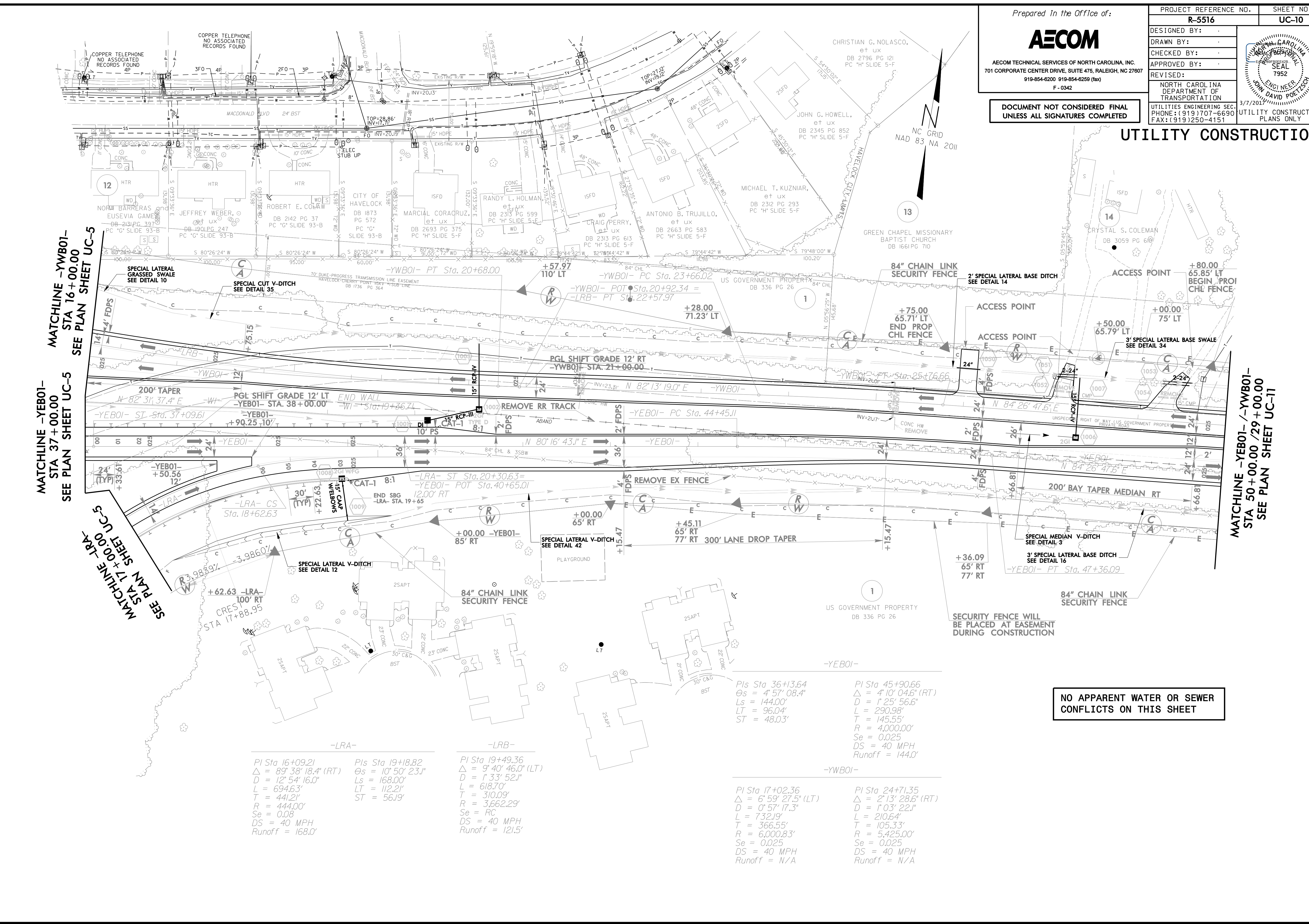


AECOM TECHNICAL SERVICES OF NORTH CAROLINA, INC.  
701 CORPORATE CENTER DRIVE, SUITE 475, RALEIGH, NC 27607  
919-854-6200 919-854-6259 (fax)  
F-0342

PROJECT REFERENCE NO. <b>R-5516</b>	SHEET NO. <b>UC-10</b>
DESIGNED BY:	
DRAWN BY:	
CHECKED BY:	
APPROVED BY:	3/7/2011
REVISED:	UTILITY CONSTRUCTION PLANS ONLY
NORTH CAROLINA DEPARTMENT OF TRANSPORTATION	
UTILITIES ENGINEERING SEC. PHONE: (919) 707-6690 FAX: (919) 250-4151	

DOCUMENT NOT CONSIDERED FINAL UNLESS ALL SIGNATURES COMPLETED

# UTILITY CONSTRUCTION



MATCHLINE -YWB01- STA 16+00.00 SEE PLAN SHEET UC-5

MATCHLINE -YEB01- STA 37+00.00 SEE PLAN SHEET UC-5

MATCHLINE -LRA- STA 17+00.00 SEE PLAN SHEET UC-5

MATCHLINE -YEB01- STA 50+00.00 / 29+00.00 SEE PLAN SHEET UC-11

-LRA-  
 PI Sta 16+09.21  
 $\Delta = 89' 38'' 18.4''$  (RT)  
 $D = 12' 54'' 16.0''$   
 $L = 694.63'$   
 $T = 441.21'$   
 $R = 444.00'$   
 $Se = 0.08$   
 $DS = 40$  MPH  
 $Runoff = 168.0'$

PIs Sta 19+18.82  
 $\Delta = 10' 50'' 23.1''$   
 $Ls = 168.00'$   
 $LT = 112.21'$   
 $ST = 56.19'$

-LRB-  
 PI Sta 19+49.36  
 $\Delta = 9' 40'' 46.0''$  (LT)  
 $D = 1' 33'' 52.1''$   
 $L = 618.70'$   
 $T = 310.09'$   
 $R = 3,662.29'$   
 $Se = RC$   
 $DS = 40$  MPH  
 $Runoff = 121.5'$

PIs Sta 36+13.64  
 $\Delta = 4' 57'' 08.4''$   
 $Ls = 144.00'$   
 $LT = 96.04'$   
 $ST = 48.03'$

-YEB01-  
 PI Sta 45+90.66  
 $\Delta = 4' 10'' 04.6''$  (RT)  
 $D = 1' 25'' 56.6''$   
 $L = 290.98'$   
 $T = 145.55'$   
 $R = 4,000.00'$   
 $Se = 0.025$   
 $DS = 40$  MPH  
 $Runoff = 144.0'$

-YWB01-  
 PI Sta 17+02.36  
 $\Delta = 6' 59'' 27.5''$  (LT)  
 $D = 0' 57'' 17.3''$   
 $L = 732.19'$   
 $T = 366.55'$   
 $R = 6,000.83'$   
 $Se = 0.025$   
 $DS = 40$  MPH  
 $Runoff = N/A$

PI Sta 24+71.35  
 $\Delta = 2' 13'' 28.6''$  (RT)  
 $D = 1' 03'' 22.1''$   
 $L = 210.64'$   
 $T = 105.33'$   
 $R = 5,425.00'$   
 $Se = 0.025$   
 $DS = 40$  MPH  
 $Runoff = N/A$

NO APPARENT WATER OR SEWER CONFLICTS ON THIS SHEET