

Prepared in the Office of:

# AECOM

AECOM TECHNICAL SERVICES OF NORTH CAROLINA, INC.  
701 CORPORATE CENTER DRIVE, SUITE 475, RALEIGH, NC 27607  
919-854-6200 919-854-6259 (fax)  
F-0342

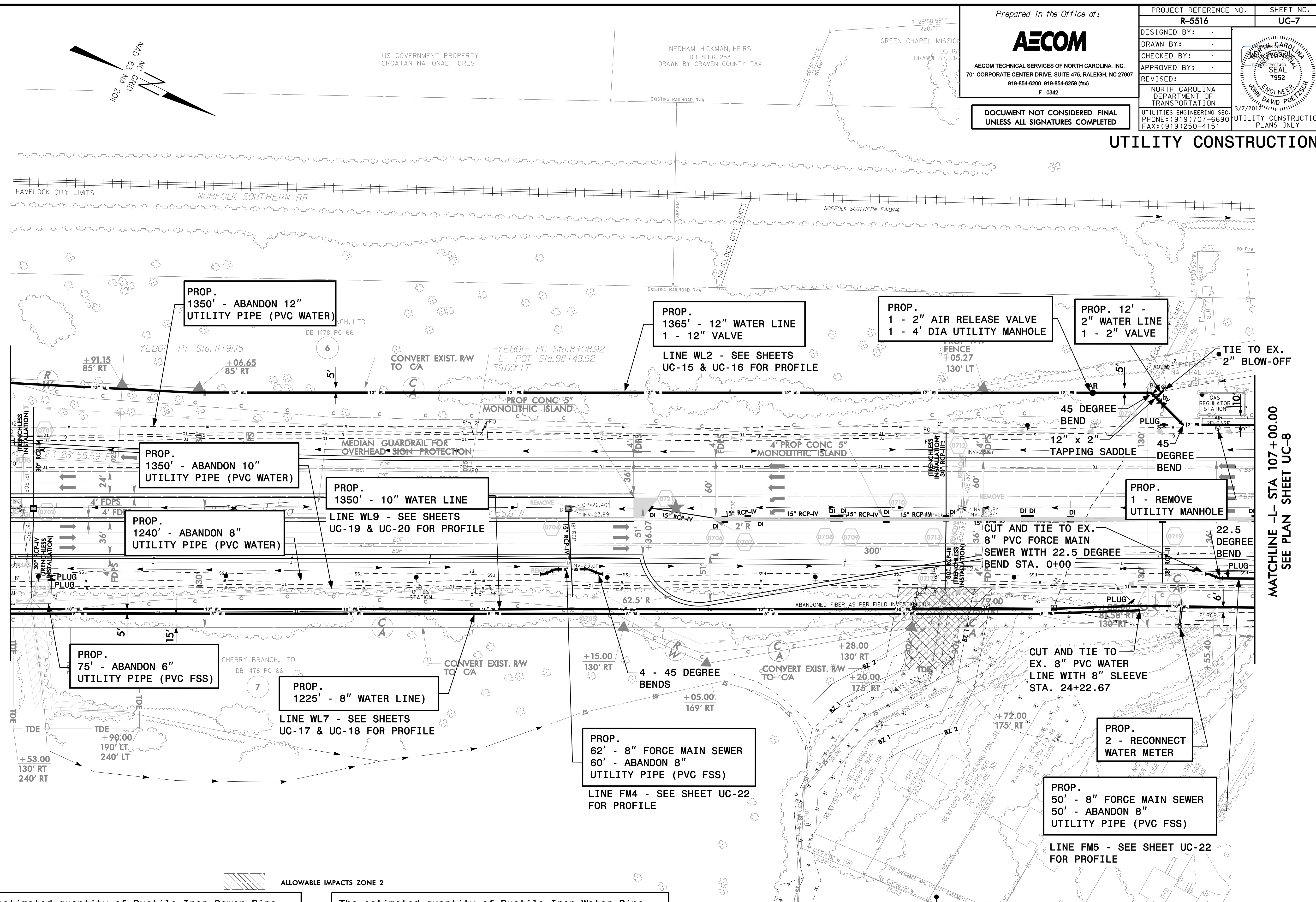
PROJECT REFERENCE NO. <b>R-5516</b>	SHEET NO. <b>UC-7</b>
DESIGNED BY:	
DRAWN BY:	
CHECKED BY:	
APPROVED BY:	
REVISED:	
NORTH CAROLINA DEPARTMENT OF TRANSPORTATION	
UTILITIES ENGINEERING SEC. PHONE: (919) 707-6690 FAX: (919) 250-4151	UTILITY CONSTRUCTION PLANS ONLY

**DOCUMENT NOT CONSIDERED FINAL  
UNLESS ALL SIGNATURES COMPLETED**

UTILITY CONSTRUCTION

MATCHLINE -L- STA 93+50.00  
SEE PLAN SHEET UC-6

MATCHLINE -L- STA 107+00.00  
SEE PLAN SHEET UC-8



The estimated quantity of Ductile Iron Sewer Pipe Fittings on this plan sheet is 1195 pounds. The actual quantity and type of fittings will vary based on field conditions.

The estimated quantity of Ductile Iron Water Pipe Fittings on this plan sheet is 515 pounds. The actual quantity and type of fittings will vary based on field conditions.

DATE: 3/6/2007  
TIME: 2:59:48 PM  
DGN: R5516-uc-wah-07.dgn