

Prepared in the Office of:



AECOM TECHNICAL SERVICES OF NORTH CAROLINA, INC.
701 CORPORATE CENTER DRIVE, SUITE 475, RALEIGH, NC 27607
919-854-6200 919-854-6259 (fax)
F-0342

DOCUMENT NOT CONSIDERED FINAL
UNLESS ALL SIGNATURES COMPLETED

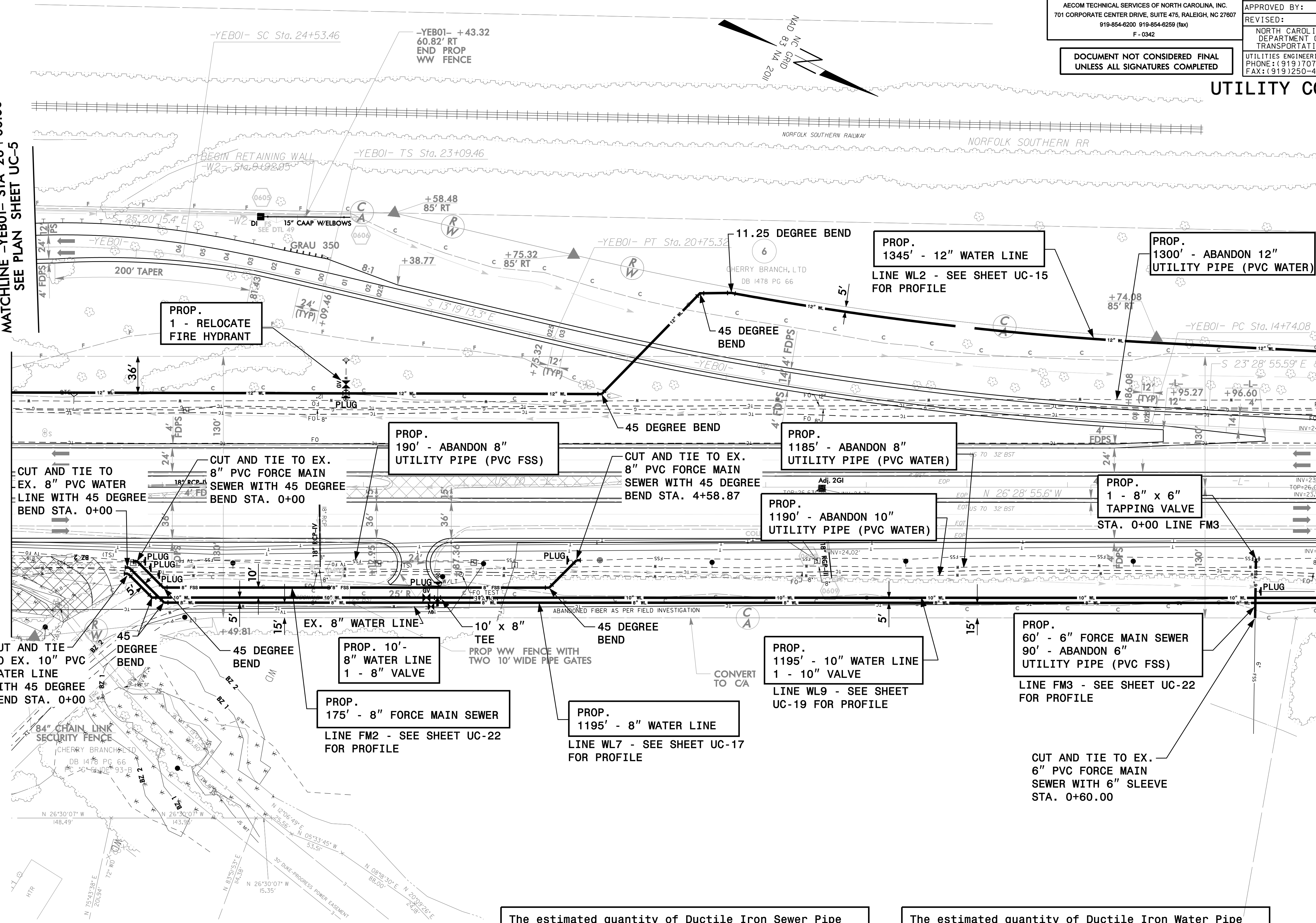
PROJECT REFERENCE NO. R-5516	SHEET NO. UC-6
DESIGNED BY:	
DRAWN BY:	
CHECKED BY:	
APPROVED BY:	
REVISED:	NORTH CAROLINA DEPARTMENT OF TRANSPORTATION 3/7/2014 DAVID POETSCH UTILITY CONSTRUCTION PLANS ONLY
UTILITIES ENGINEERING SEC. PHONE: (919) 707-6690 FAX: (919) 250-4151	

UTILITY CONSTRUCTION

MATCHLINE -YEB01- STA 26+00.00
SEE PLAN SHEET UC-5

MATCHLINE -L- STA 80+50.00
SEE PLAN SHEET UC-5

MATCHLINE -L- -YEB01-
STA 93+50.00 / 13+07.88
SEE PLAN SHEET UC-7



The estimated quantity of Ductile Iron Sewer Pipe Fittings on this plan sheet is 925 pounds. The actual quantity and type of fittings will vary based on field conditions.

The estimated quantity of Ductile Iron Water Pipe Fittings on this plan sheet is 1620 pounds. The actual quantity and type of fittings will vary based on field conditions.

DATE: 3/6/2017
TIME: 2:57:49 PM
DRN: 15516.uc.pnh.dwg