

Prepared in the Office of:

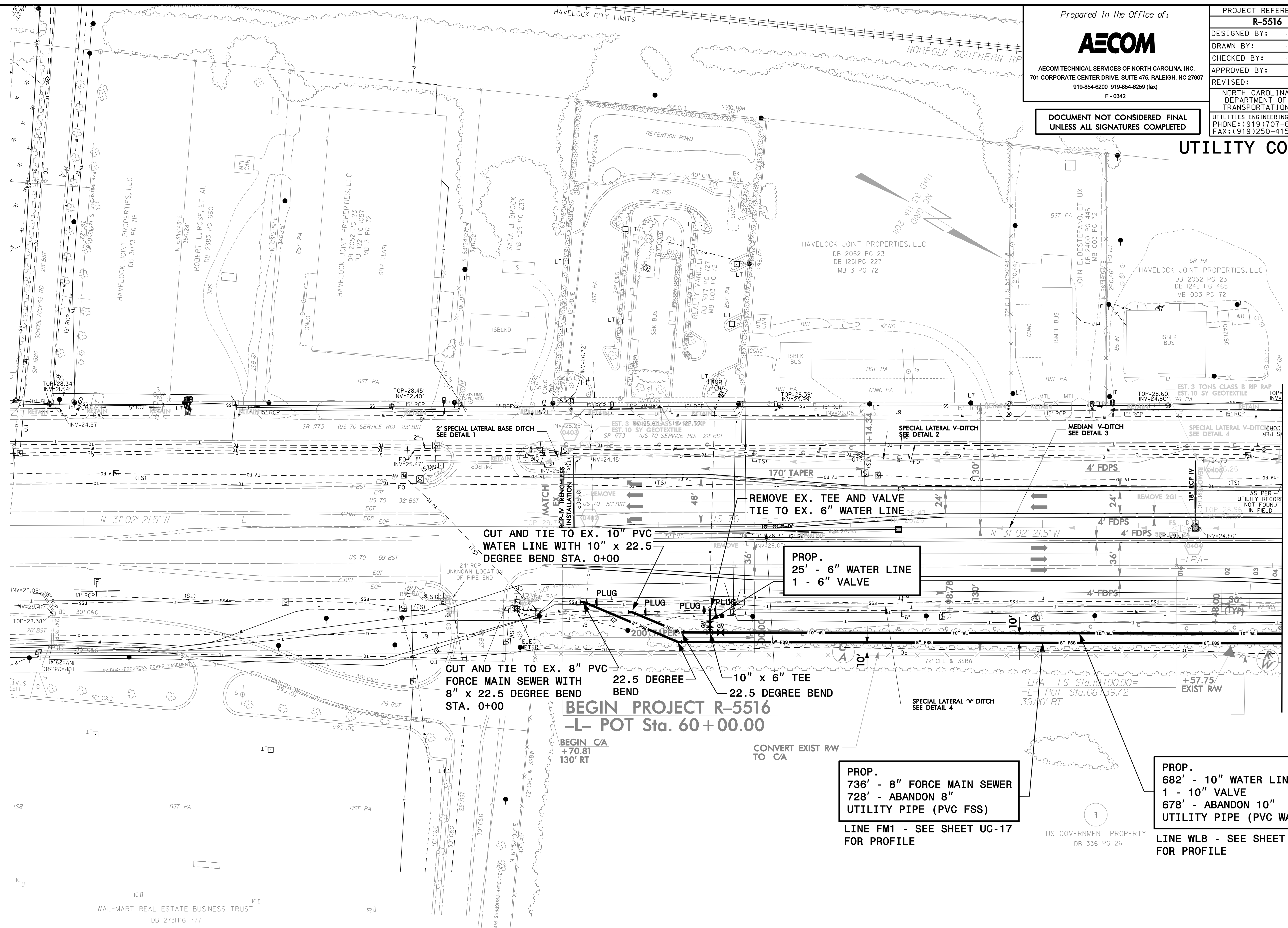


AECOM TECHNICAL SERVICES OF NORTH CAROLINA, INC.
701 CORPORATE CENTER DRIVE, SUITE 475, RALEIGH, NC 27607
919-854-6200 919-854-6259 (fax)
F-0342

PROJECT REFERENCE NO. R-5516	SHEET NO. UC-4
DESIGNED BY:	
DRAWN BY:	
CHECKED BY:	
APPROVED BY:	
REVISED:	3/7/2011
NORTH CAROLINA DEPARTMENT OF TRANSPORTATION	
UTILITIES ENGINEERING SEC. PHONE: (919) 707-6690 FAX: (919) 250-4151	UTILITY CONSTRUCTION PLANS ONLY

DOCUMENT NOT CONSIDERED FINAL
UNLESS ALL SIGNATURES COMPLETED

UTILITY CONSTRUCTION



MATCHLINE -L- STA 67 + 50.00
SEE PLAN SHEET UC-5

CUT AND TIE TO EX. 10" PVC
WATER LINE WITH 10" x 22.5
DEGREE BEND STA. 0+00

REMOVE EX. TEE AND VALVE
TIE TO EX. 6" WATER LINE

PROP.
25' - 6" WATER LINE
1 - 6" VALVE

CUT AND TIE TO EX. 8" PVC
FORCE MAIN SEWER WITH
8" x 22.5 DEGREE BEND
STA. 0+00

BEGIN PROJECT R-5516
-L- POT Sta. 60 + 00.00

BEGIN C/A
+70.81
130' RT

CONVERT EXIST RW
TO C/A

PROP.
736' - 8" FORCE MAIN SEWER
728' - ABANDON 8"
UTILITY PIPE (PVC FSS)
LINE FM1 - SEE SHEET UC-17
FOR PROFILE

PROP.
682' - 10" WATER LINE
1 - 10" VALVE
678' - ABANDON 10"
UTILITY PIPE (PVC WATER)
LINE WL8 - SEE SHEET UC-18
FOR PROFILE

The estimated quantity of Ductile Iron Sewer Pipe Fittings on this plan sheet is 265 pounds. The actual quantity and type of fittings will vary based on field conditions.

The estimated quantity of Ductile Iron Water Pipe Fittings on this plan sheet is 765 pounds. The actual quantity and type of fittings will vary based on field conditions.

DATE: 3/6/2011
TIME: 8:45:51 PM
DGN: R5516.uc.path.dwg

WAL-MART REAL ESTATE BUSINESS TRUST
DB 2731 PG 777
PB "H" PG 63 D & E
PB "H" PG 115 F & G