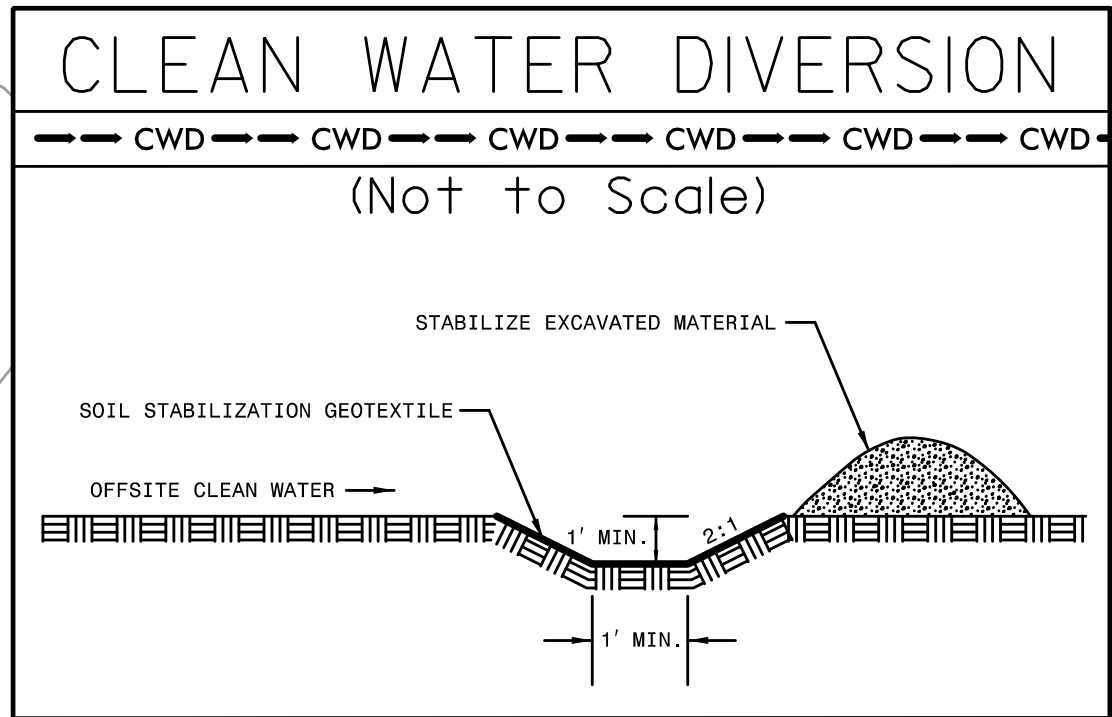


Place Matting for Erosion Control on Slope as Work Allows.
-Y09A- Sta. 19+50 to Sta. 22+00 LT&RT
-Y09A- Sta. 26+50 to Sta. 28+00 LT&RT

-Y09A-
PI Sta 25+06.17
 $\Delta = 81^{\circ} 24' 49.0"$ (LT)
 $D = 16' 22" 12.8"$
 $L = 497.33'$
 $T = 301.12'$
 $R = 350.00'$
 $Se = 0.06$
 $DS = 30$ MPH
Runoff = 102.0'



66' x 28' x 3'
1.5 inch Skimmer
with 1.25 inch
Orifice Diameter
14 ft. weir
ID 14.1

40' x 20' x 3'
1.5 inch Skimmer
with 0.75 inch
Orifice Diameter
4 ft. weir
ID 14.2

66' x 30' x 3'
1.5 inch Skimmer
with 1.375 inch
Orifice Diameter
14 ft. weir
ID 14.3

30' x 15' x 3'
1.5 inch Skimmer
with 0.50 inch
Orifice Diameter
4 ft. weir
ID 14.4

MATCHLINE -Y09A- STA 14+00.00
SEE PLAN SHEET EC-23

