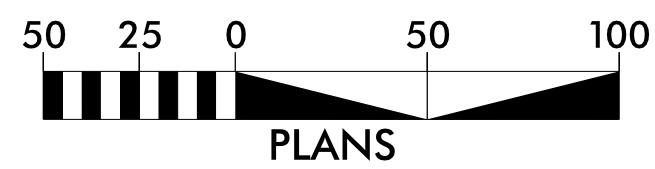


-L-	-LRA-	-LRB-	-YEB01-
PI Sta 75+56.92 $\Delta = 4' 33" 25.9" (RT)$ $D = 2' 00" 00.0"$ $L = 227.86'$ $T = 113.99'$ $R = 2,864.79'$ $Se = 0.04$ $DS = 50 MPH$ $Runoff = 144.0'$	PIs Sta 11+12.21 $\Theta s = 10' 50" 23.1"$ $Ls = 168.00'$ $LT = 112.21'$ $ST = 56.19'$	PI Sta 16+09.21 $\Delta = 89' 38" 18.4" (RT)$ $D = 12' 54" 16.0"$ $L = 694.63'$ $T = 441.21'$ $R = 444.00'$ $Se = 0.08$ $DS = 40 MPH$ $Runoff = 168.0'$	PI Sta 31+10.10 $\Delta = 76' 29" 46.8" (LT)$ $D = 6' 52" 41.7"$ $L = 1112.15'$ $T = 656.64'$ $R = 833.00'$ $Se = 0.06$ $DS = 50 MPH$ $Runoff = 144.0'$

-YWB01-
PI Sta 12+78.54 $\Delta = 120' 15" 08.0" (RT)$ $D = 35' 48" 35.5"$ $L = 335.81'$ $T = 278.54'$ $R = 160.00'$ $Se = 0.06$ $DS = 20 MPH$ $Runoff = 175.0'$

-YWB01-
PI Sta 17+02.36 $\Delta = 6' 59" 27.5" (LT)$ $D = 0' 57" 17.3"$ $L = 732.19'$ $T = 366.55'$ $R = 6000.83'$ $Se = NC$ $DS = 40 MPH$ $Runoff = N/A$

-LRB-
PI Sta 19+49.36 $\Delta = 9' 40" 46.0" (LT)$ $D = 1' 33" 52.1"$ $L = 618.70'$ $T = 310.09'$ $R = 3,662.29'$ $Se = RC$ $DS = 40 MPH$ $Runoff = 121.5'$

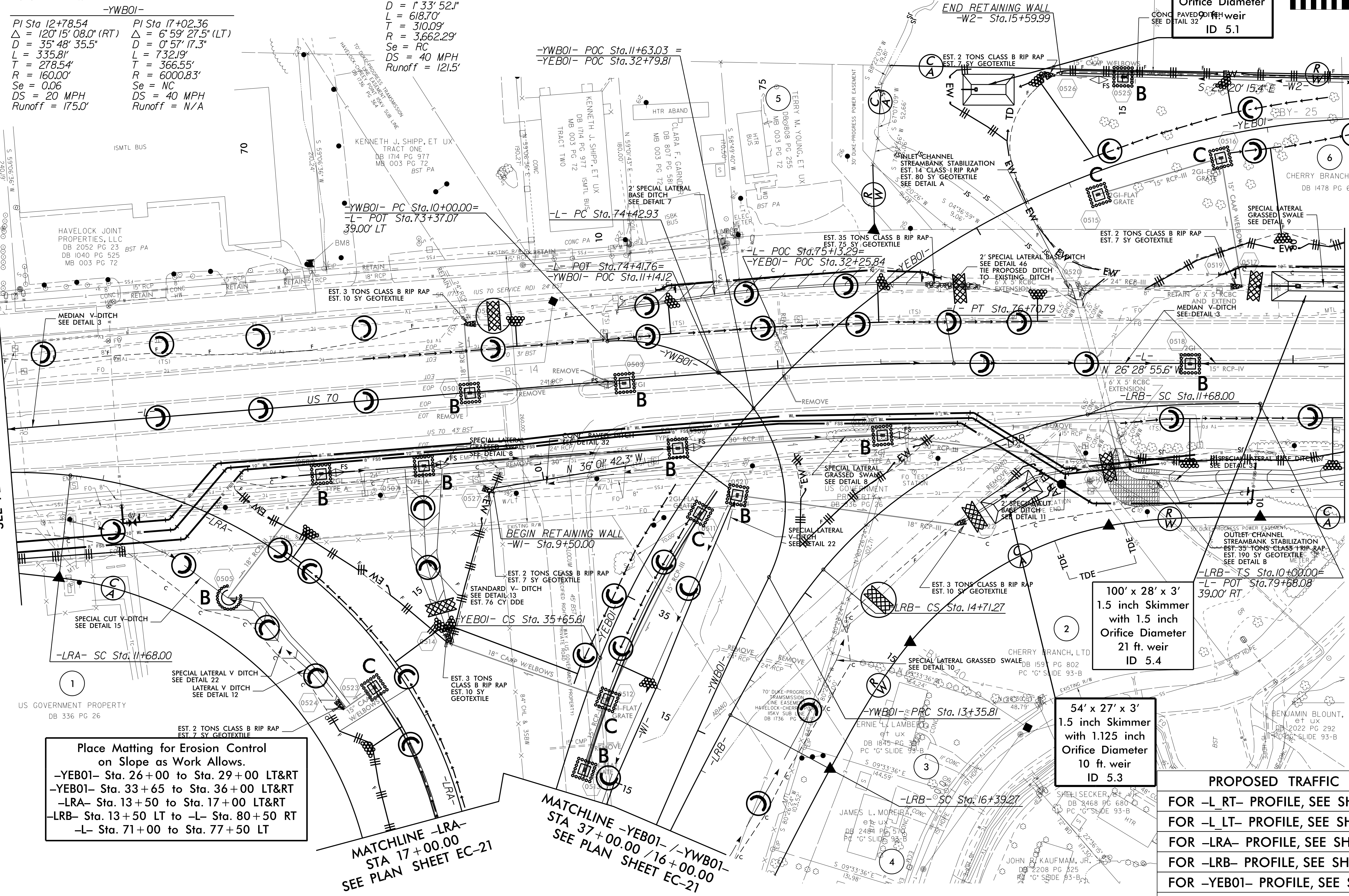


50' x 25' x 3'
1.5 inch Skimmer
with 1.0 inch
Orifice Diameter
ID 5.1

MATCHLINE -L- STA 67+50.00
SEE PLAN SHEET EC-15

MATCHLINE -L- STA 80+50.00
SEE PLAN SHEET EC-17

MATCHLINE -YEB01-
STA 26+00.00
SEE PLAN SHEET EC-17



Place Matting for Erosion Control
on Slope as Work Allows.
-YEB01- Sta. 26+00 to Sta. 29+00 LT&RT
-YEB01- Sta. 33+65 to Sta. 36+00 LT&RT
-LRA- Sta. 13+50 to Sta. 17+00 LT&RT
-LRB- Sta. 13+50 LT to -L- Sta. 80+50 RT
-L- Sta. 71+00 to Sta. 77+50 LT

100' x 28' x 3'
1.5 inch Skimmer
with 1.5 inch
Orifice Diameter
21 ft. weir
ID 5.4

54' x 27' x 3'
1.5 inch Skimmer
with 1.125 inch
Orifice Diameter
10 ft. weir
ID 5.3

PROPOSED TRAFFIC SIGNAL	
FOR -L RT- PROFILE, SEE SHEET NO. 15	
FOR -L LT- PROFILE, SEE SHEET NO. 16	
FOR -LRA- PROFILE, SEE SHEET NO. 18	
FOR -LRB- PROFILE, SEE SHEET NO. 19	
FOR -YEB01- PROFILE, SEE SHEET NO. 20	
FOR -YWB01- PROFILE, SEE SHEET NO. 21	

MATCHLINE -LRA-
STA 17+00.00
SEE PLAN SHEET EC-21

MATCHLINE -YEB01- / -YWB01-
STA 37+00.00 / 16+00.00
SEE PLAN SHEET EC-21