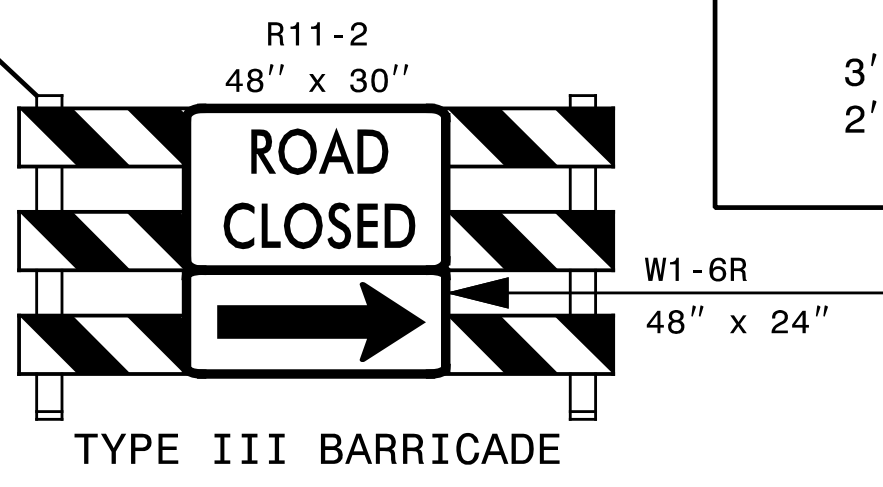
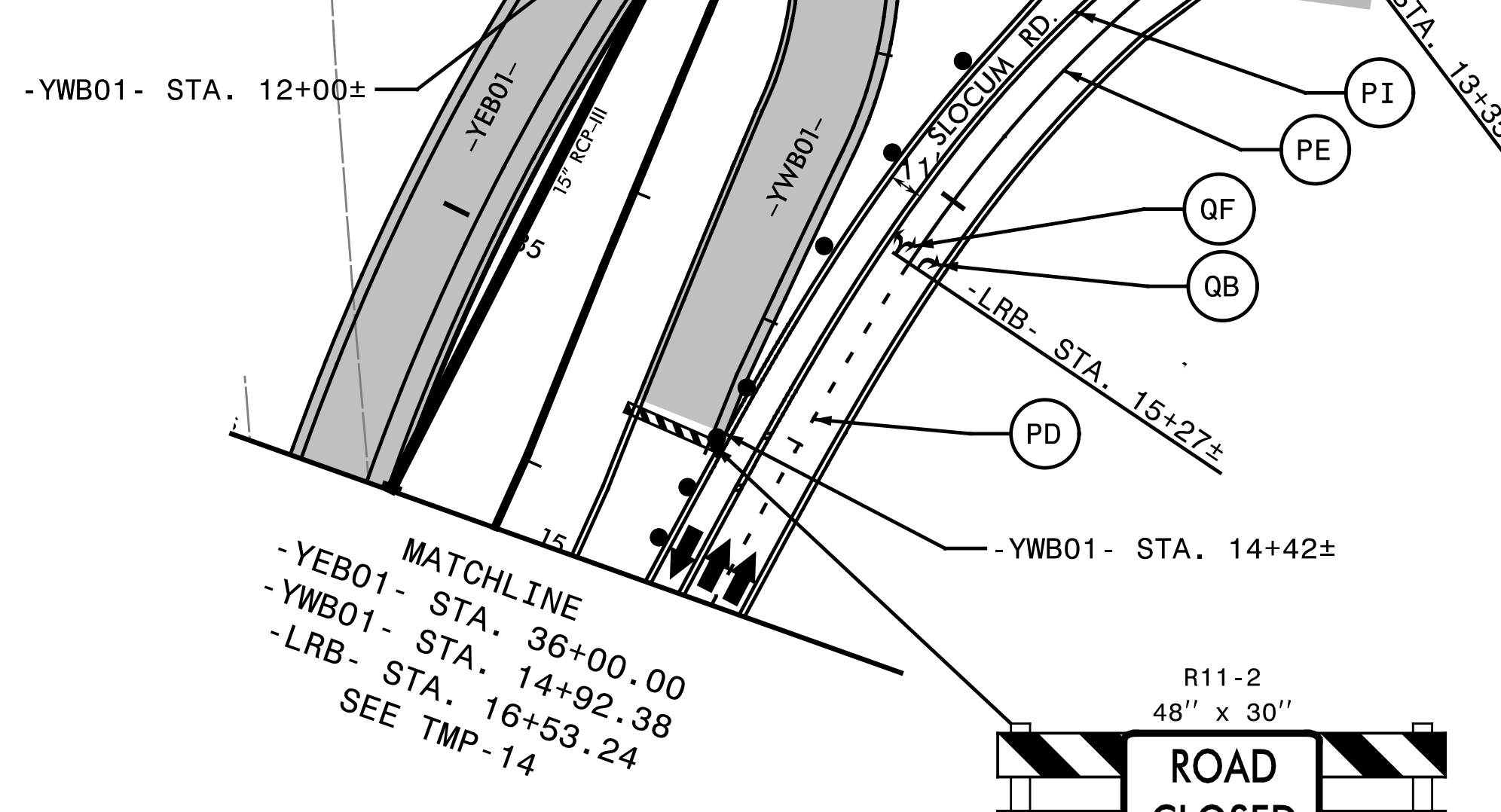
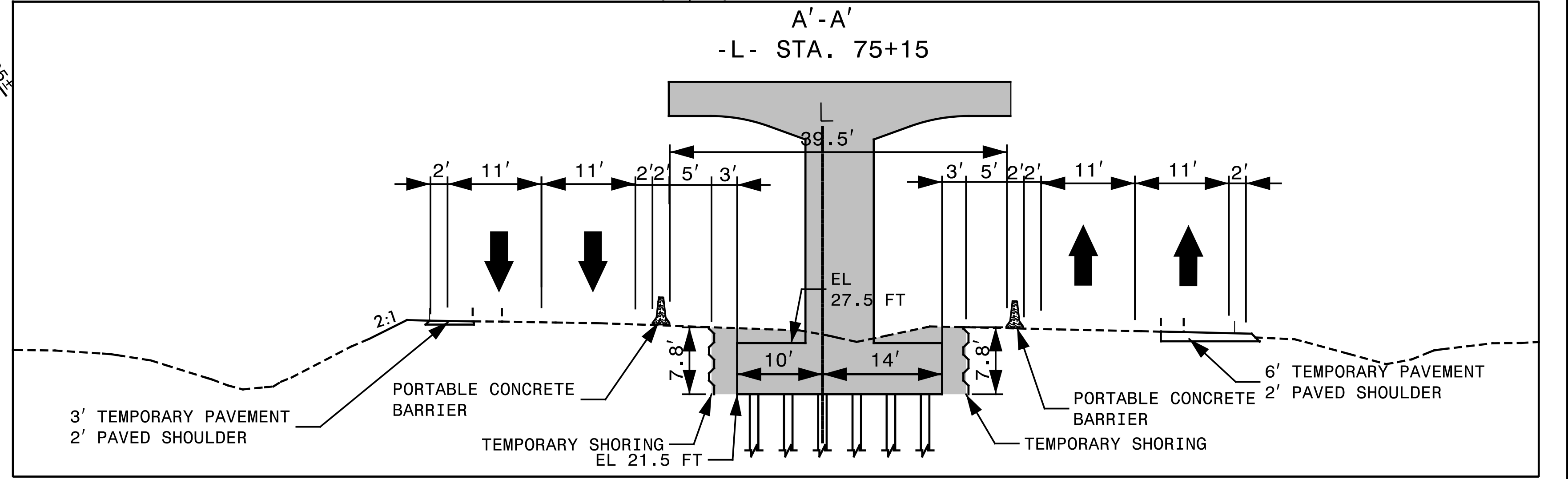
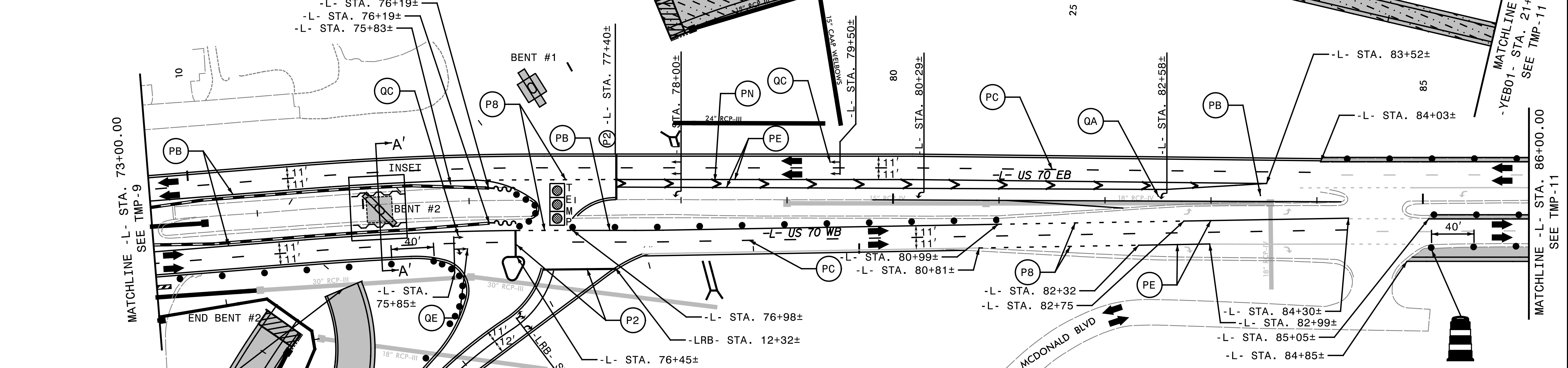


- ① TEMPORARY SHORING
FROM -L- STA 74+90± 12.9' LEFT TO 75+40± 12.9' LEFT
MAXIMUM HEIGHT: 8.0', AVERAGE HEIGHT: 7.8'
QUANTITY = 390 SF
- ② TEMPORARY SHORING
FROM -L- STA 74+90± 17.1' RIGHT TO 75+40± 17.1' RIGHT
MAXIMUM HEIGHT: 8.0', AVERAGE HEIGHT: 7.8'
QUANTITY = 390 SF



11/21/2016 G:\Transportation\TR13.017.00 NCDOT 2012 Traffic LSA\TR13.017.09 (R-5516 TMP)\Traffic\Traffic Control\R-5516 TMP-10.dgn smiller

SEPI
ENGINEERING & CONSTRUCTION
1025 Wade Avenue
Raleigh, NC 27605
Tel: 919-789-9977
Fax: 919-789-9591
License: C-2197

APPROVED: *Steve Miller*
DATE: 3/16/2017
SEAL
DOCUMENT NOT CONSIDERED FINAL
UNLESS ALL SIGNATURES COMPLETED

DIVISION OF HIGHWAYS
STATE OF NORTH CAROLINA
DEPARTMENT OF TRANSPORTATION
WORK ZONE TRAFFIC CONTROL

PHASE II