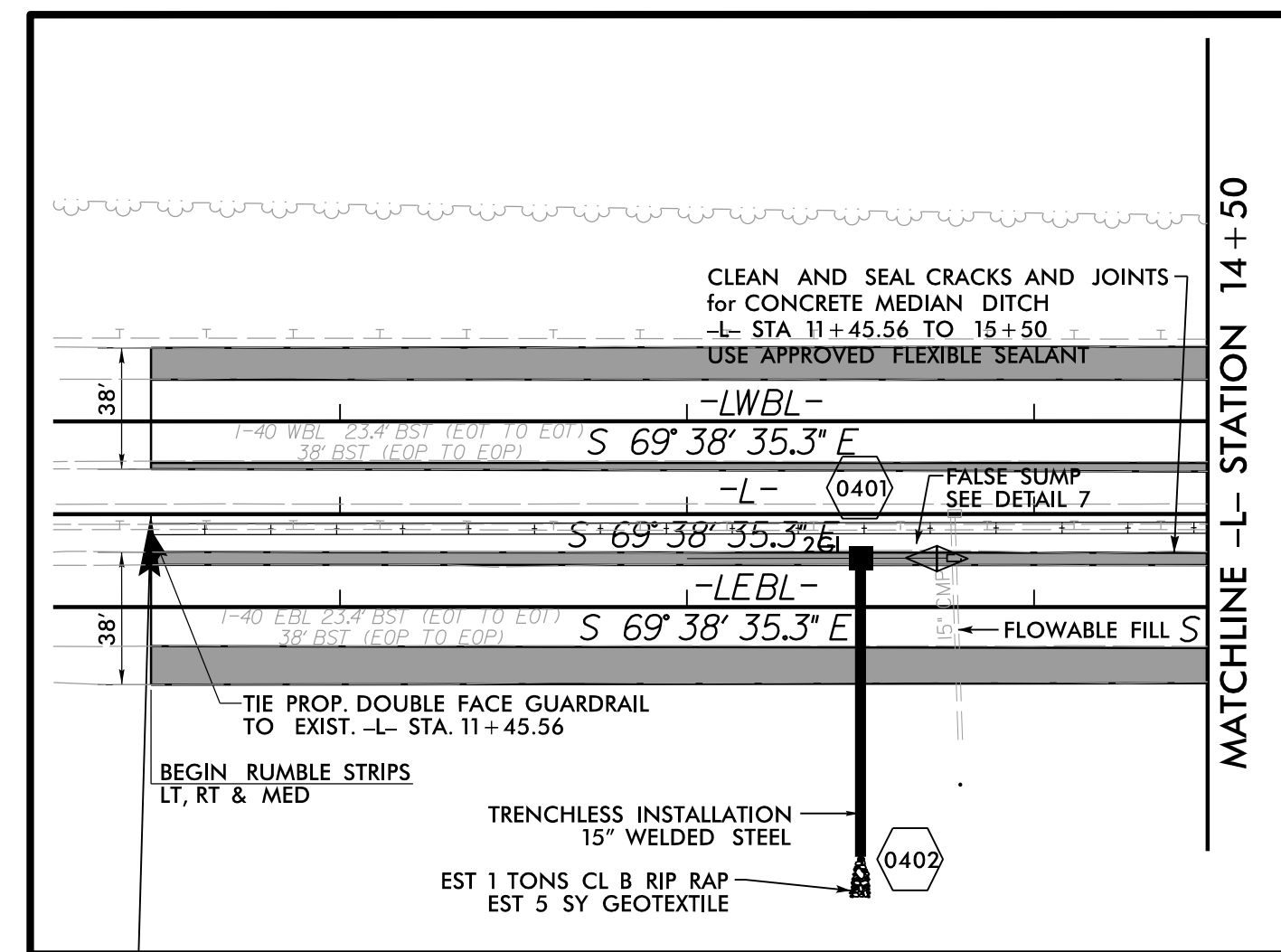


INSET A



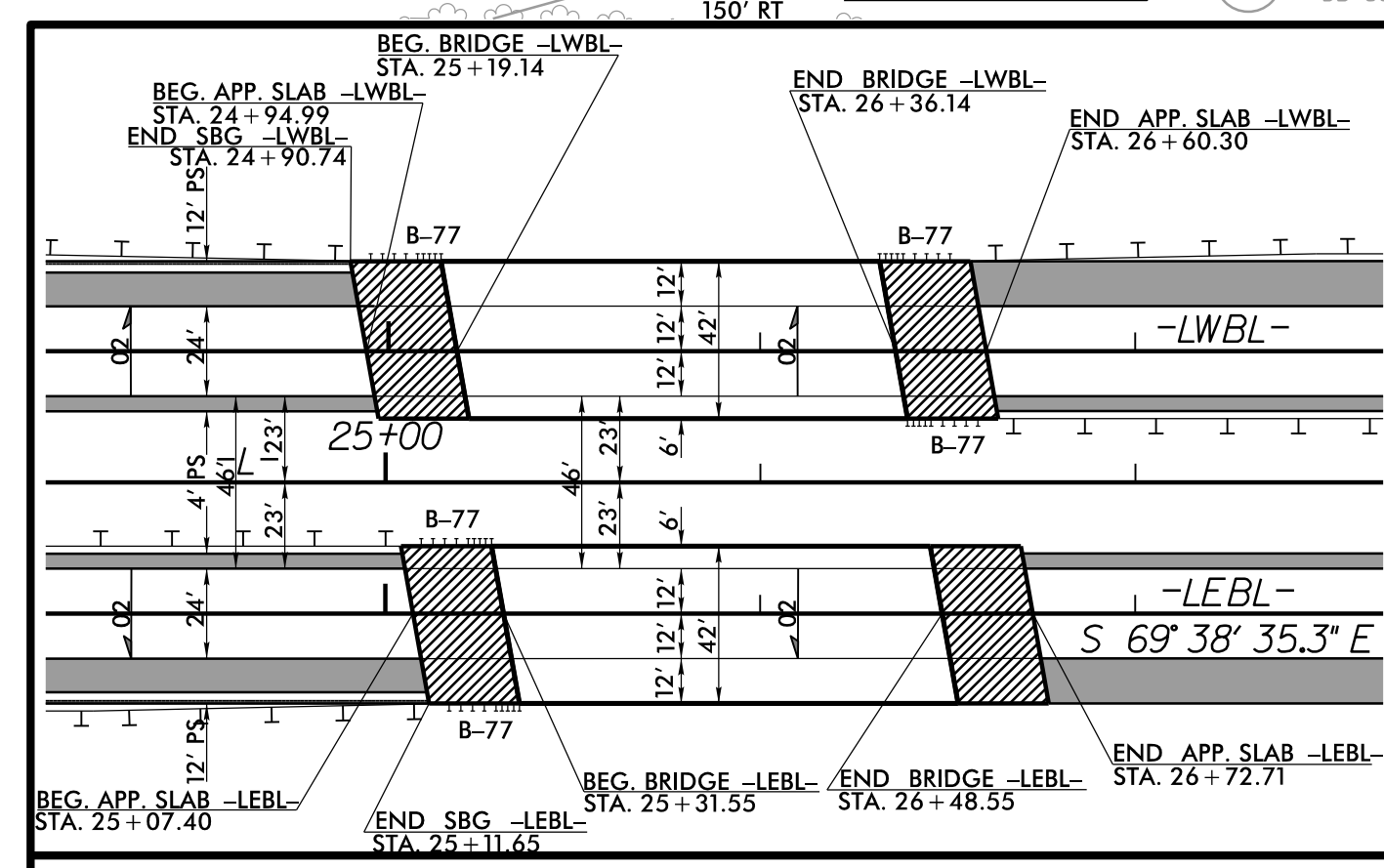
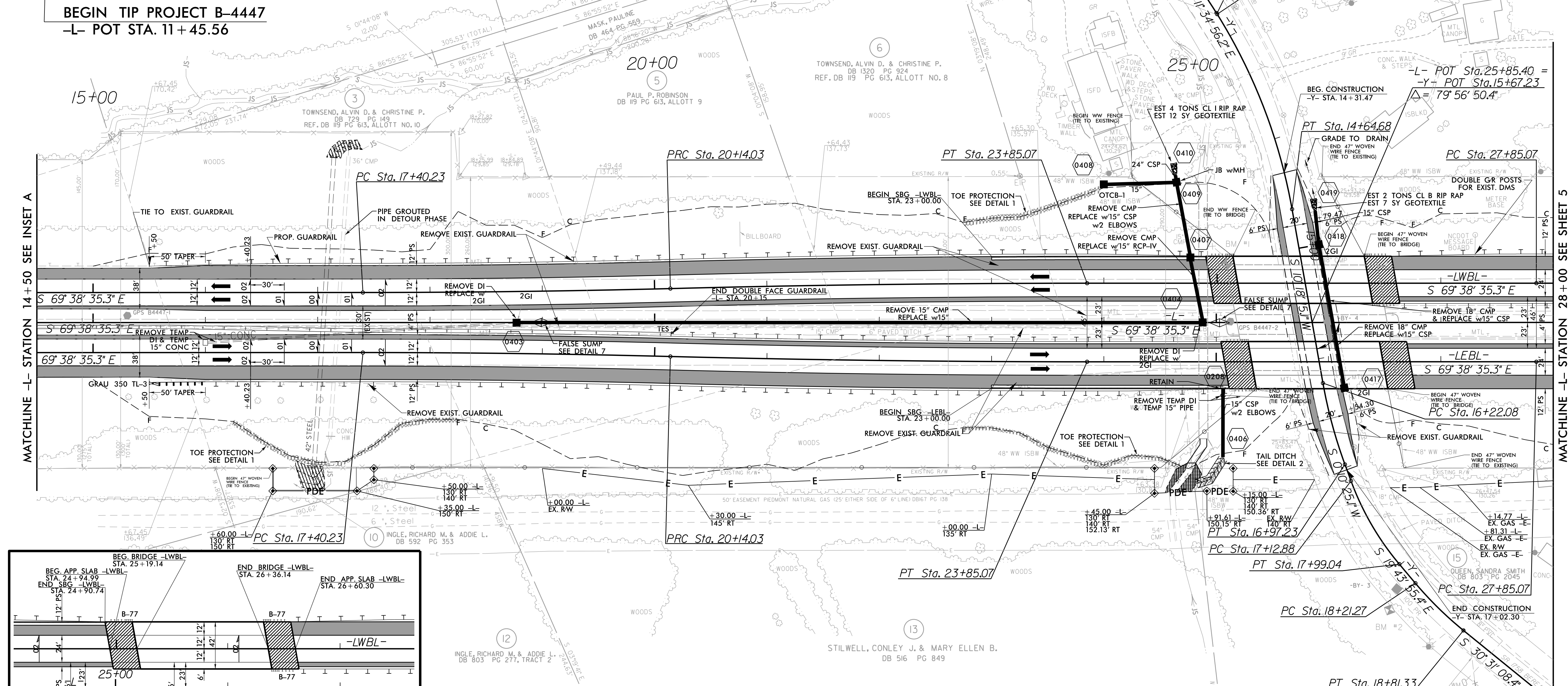
BEGIN TIP PROJECT B-4447
-L- POT STA. 11+45.56

-LWBL-		-LEBL-	
PI Sta 18+77.14	PI Sta 21+99.56	PI Sta 18+77.14	PI Sta 21+99.56
$\Delta = 1' 27' 58.1''$ (LT)	$\Delta = 1' 27' 58.1''$ (RT)	$\Delta = 1' 27' 58.1''$ (LT)	$\Delta = 1' 27' 58.1''$ (RT)
D = 0' 32' 07.7"	D = 0' 23' 42.5"	D = 0' 32' 07.7"	D = 0' 23' 42.5"
L = 273.80'	L = 371.04'	L = 273.80'	L = 371.04'
T = 136.91'	T = 185.53'	T = 136.91'	T = 185.53'
R = 10,700.00'	R = 14,500.00'	R = 10,700.00'	R = 14,500.00'
SE = .02	SE = NC	SE = .02	SE = NC
RO = 60'	RO = 60'	RO = 60'	RO = 60'

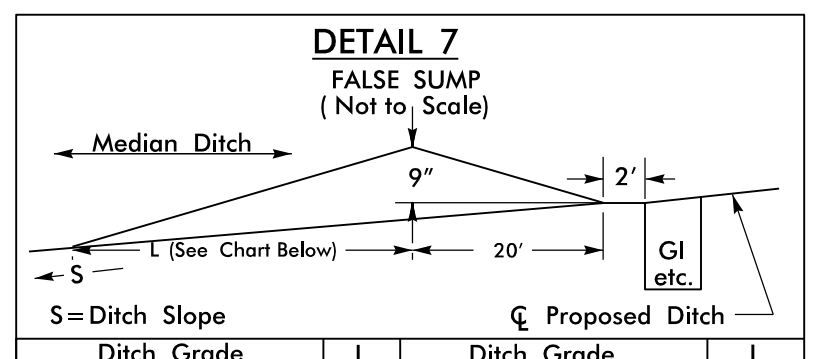
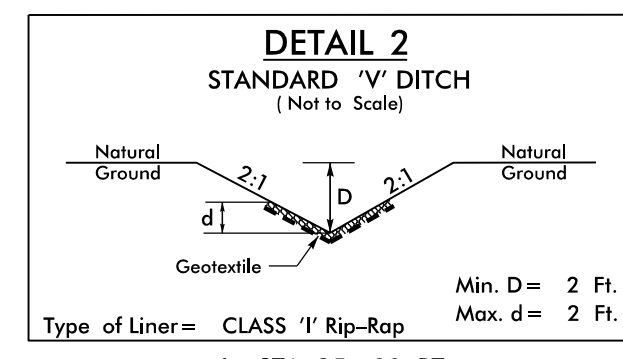
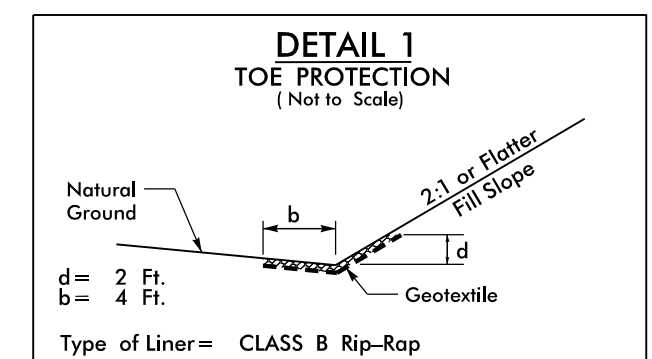
-Y-			
PI Sta 12+01.64	PI Sta 13+72.25	PI Sta 17+56.40	PI Sta 16+59.75
$\Delta = 14' 41' 50.3''$ (RT)	$\Delta = 21' 53' 11.4''$ (RT)	$\Delta = 19' 54' 20.5''$ (LT)	$\Delta = 10' 07' 50.0''$ (LT)
D = 9' 47' 38.9"	D = 11' 41' 34.9"	D = 23' 06' 11.3"	D = 13' 28' 52.9"
L = 150.06'	L = 86.16'	L = 187.18'	L = 75.14'
T = 75.45'	T = 94.74'	T = 43.52'	T = 37.67'
R = 585.00'	R = 490.00'	R = 246.00'	R = 425.00'

PI Sta 18+51.39	
$\Delta = 10' 47' 13.0''$ (LT)	
D = 17' 57' 39.8"	
L = 60.06'	
T = 30.12'	
R = 319.00'	

POT Sta. 10+00.00



PAVEMENT/BRIDGE RELATIONSHIP SKETCH (NTS)



EST. QUANTITIES

FROM -L- STA.	TO STA.	CL B RIP RAP	EST. TONS	GEOTEXTILE	DDE	EST. CY
-L- STA. 16+25	TO STA. 18+25	RT.	60	134 SY	45	285
-L- STA. 22+75	TO STA. 24+00	LT.	38	84 SY	16	104
-L- STA. 22+75	TO STA. 24+68	RT.	58	129 SY	43	272
-L- STA. 32+25	TO STA. 33+00	RT.	23	50 SY	17	107

EST. C11 RIP RAP = 36 TONS
EST. GEOTEXTILE = 68 SY

Ditch Grade	L	Ditch Grade	L
0.0% To 2.0%	20'	Over 4.0% To 6.0%	40'
Over 2.0% To 4.0%	30'	Over 6.0%	50'

AT -L- STA. 13+72
AT -L- STA. 18+99
AT -L- STA. 25+00

SEE SHEET 2B-1 THRU 2B-4 FOR DETOUR ALIGNMENTS
SEE SHEET 6 FOR -LWBL- PROFILE
SEE SHEET 7 FOR -LEBL- PROFILE
SEE SHEET 9 FOR EXIST. -Y- PROFILE
SEE SHEET S01-1 THRU S01-28 FOR -LWBL- STRUCTURE PLANS
SEE SHEET S02-1 THRU S02-28 FOR -LEBL- STRUCTURE PLANS
SEE SHEET C-1 THRU C-6 FOR CULVERT PLANS

PROJECT REFERENCE NO. B-4447	SHEET NO. 4
ROADWAY DESIGN ENGINEER ANDREW P. YOUNG SEAL 034407 5/17/2017	HYDRAULICS ENGINEER ROY D. LOVINGOOD SEAL 019775 5/18/2017
STEWART	
DOCUMENT NOT CONSIDERED FINAL UNLESS ALL SIGNATURES COMPLETED	

REVISIONS

8/17/99
5/8/2017 B4447_Rdy_psh_04.dgn
USFTRK