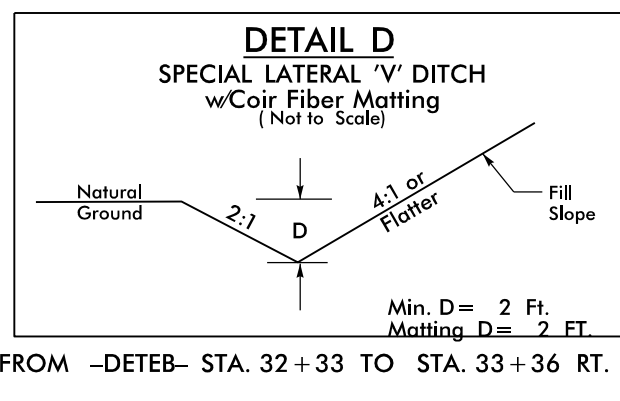
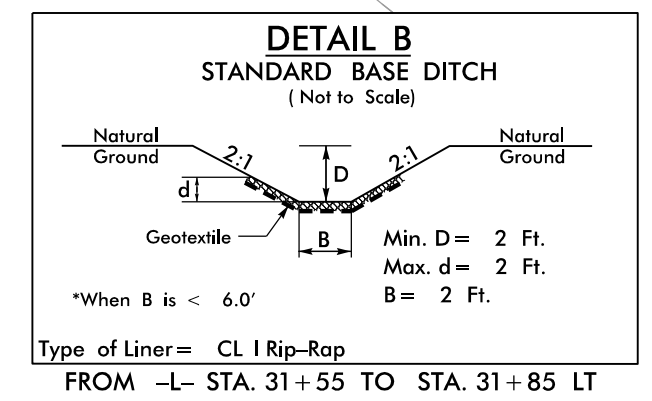
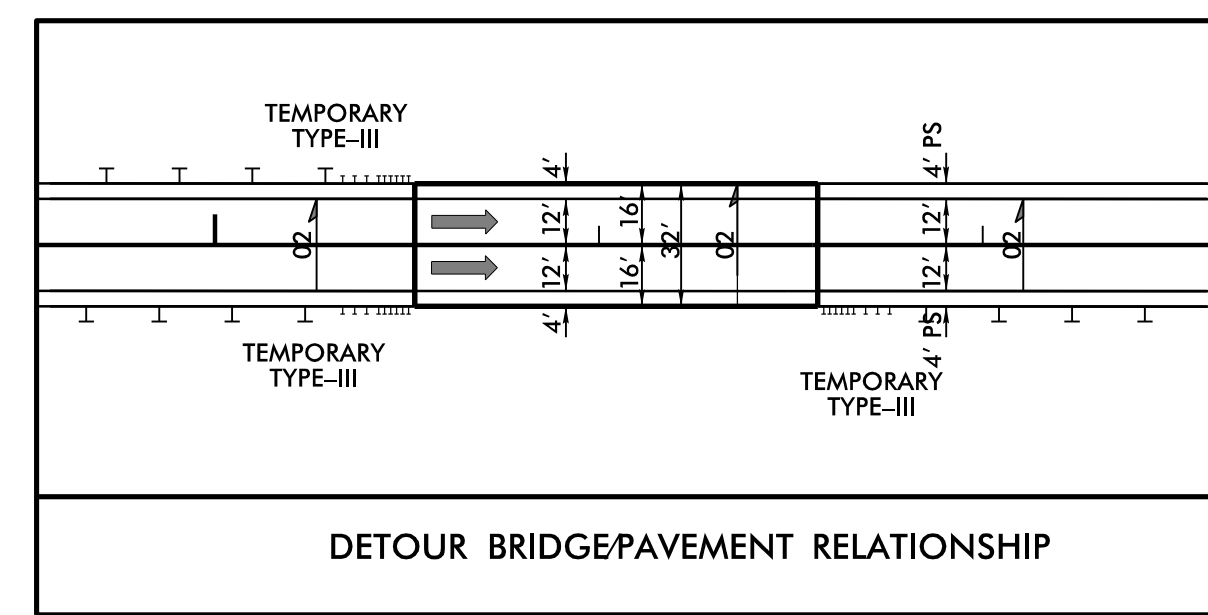
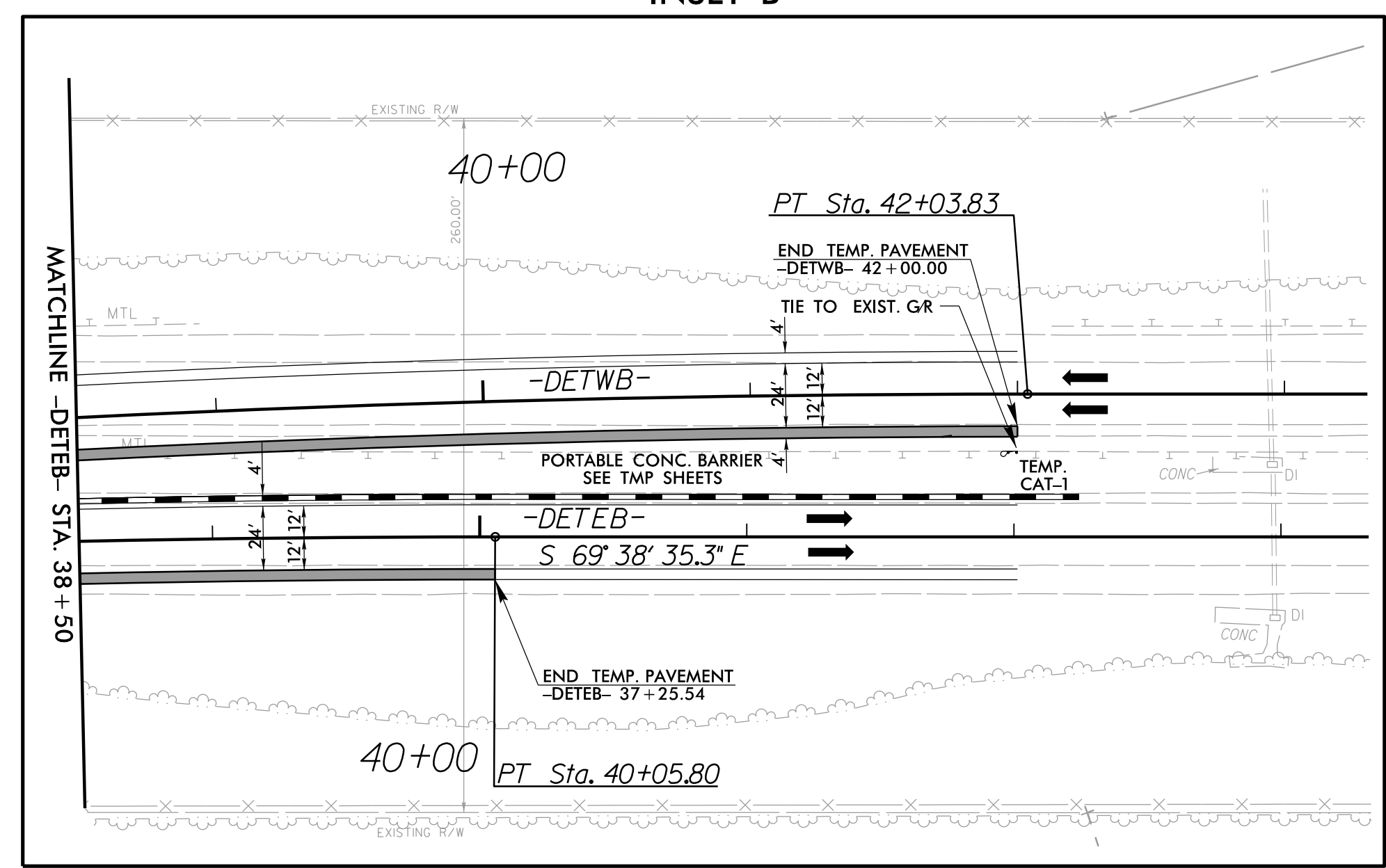
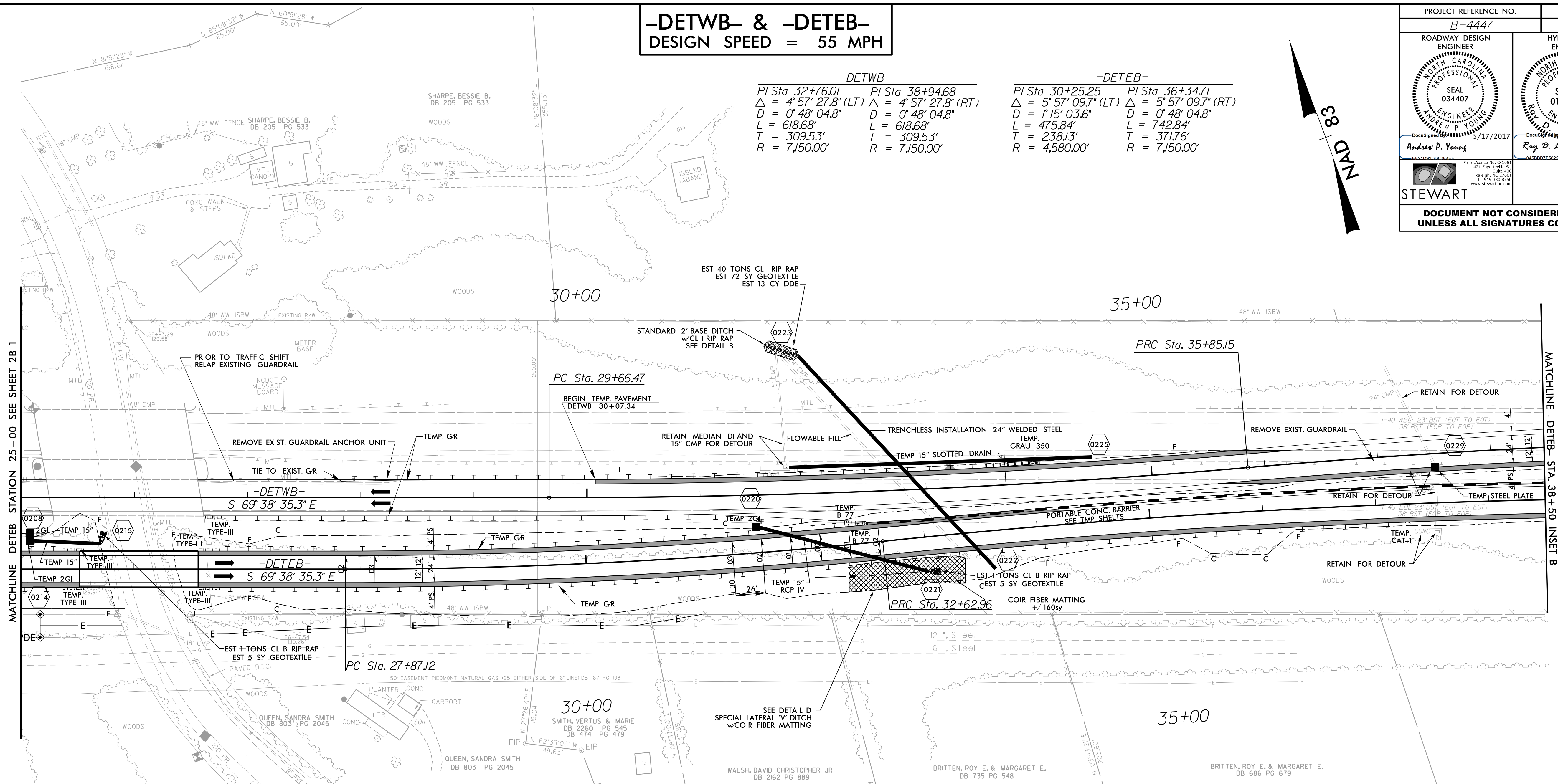


**-DETWB- & -DETEB-
DESIGN SPEED = 55 MPH**

-DETWB-		-DETEB-	
PI Sta 32+76.01	PI Sta 38+94.68	PI Sta 30+25.25	PI Sta 36+34.71
$\Delta = 4' 57" 27.8" (LT)$	$\Delta = 4' 57" 27.8" (RT)$	$\Delta = 5' 57" 09.7" (LT)$	$\Delta = 5' 57" 09.7" (RT)$
$D = 0' 48" 04.8"$	$D = 0' 48" 04.8"$	$D = 1' 15" 03.6"$	$D = 0' 48" 04.8"$
$L = 618.68'$	$L = 618.68'$	$L = 475.84'$	$L = 742.84'$
$T = 309.53'$	$T = 309.53'$	$T = 238.13'$	$T = 371.76'$
$R = 7,150.00'$	$R = 7,150.00'$	$R = 4,580.00'$	$R = 7,150.00'$

PROJECT REFERENCE NO. B-4447	SHEET NO. 2B-2
ROADWAY DESIGN ENGINEER ANDREW P. YOUNG SEAL 034407 5/17/2017	HYDRAULICS ENGINEER RAY D. LOVINGOOD SEAL 019775 5/18/2017
STEWART	
DOCUMENT NOT CONSIDERED FINAL UNLESS ALL SIGNATURES COMPLETED	



SEE SHEET 8 FOR -DETEB- PROFILE

REVISIONS

5/17/2017 B4447_Rdy_det_2B-2.dgn