

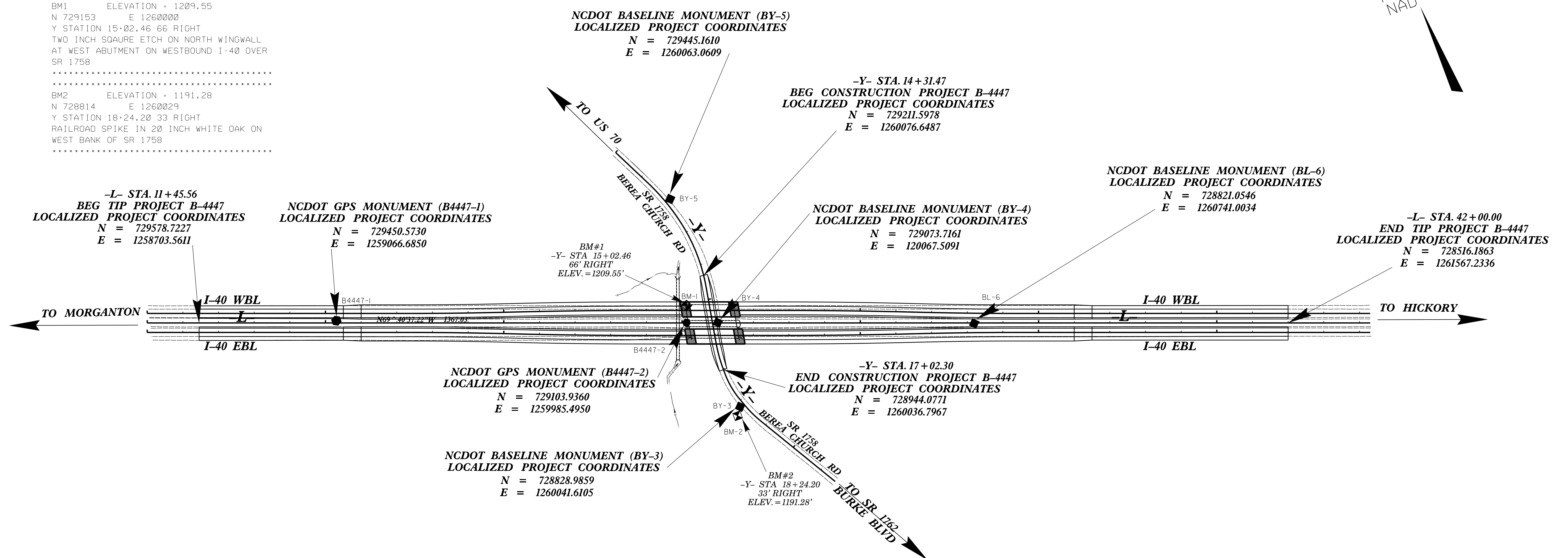
# SURVEY CONTROL SHEET B-4447 FINAL

PROJECT REFERENCE NO.	SHEET NO.
B-4447	1C-1
Location and Surveys	

BL	POINT	DESC.	NORTH	EAST	ELEVATION	L STATION	OFFSET
1		B4447-1	729450.5730	1259066.6850	1232.71	15+30.58	6.17 LT
2		B4447-2	729103.9360	1259985.4950	1209.43	25+12.59	0.81 LT
6		BL-6	728821.0546	1260741.0034	1203.81	33+19.32	1.59 RT

BY	POINT	DESC.	NORTH	EAST	ELEVATION	Y STATION	OFFSET
5		BY-5	729445.1610	1260063.0609	1168.48	11+99.14	14.80 LT
4		BY-4	729073.7161	1260067.5091	1183.74	15+68.79	14.55 LT
3		BY-3	728828.9859	1260041.6105	1193.32	18+14.61	15.91 RT

.....  
 BM1 ELEVATION = 1209.55  
 N 729153 E 1260000  
 Y STATION 15+02.46 66 RIGHT  
 TWO INCH SQUARE ETCH ON NORTH WINGWALL  
 AT WEST ABUTMENT ON WESTBOUND I-40 OVER  
 SR 1758  
 .....  
 BM2 ELEVATION = 1191.28  
 N 728814 E 1260029  
 Y STATION 18+24.20 33 RIGHT  
 RAILROAD SPIKE IN 20 INCH WHITE OAK ON  
 WEST BANK OF SR 1758  
 .....



**NOTES:**

1. THE CONTROL DATA FOR THIS PROJECT CAN BE FOUND ELECTRONICALLY BY SELECTING PROJECT CONTROL DATA AT:  
[HTTP://WWW.DOH.DOT.STATE.NC.US/PRECONSTRUCTHIGHWAY/LOCATION/PROJECT/](http://www.doh.dot.state.nc.us/preconstructhighway/location/project/)  
 THE FILES TO BE FOUND ARE AS FOLLOWS:  
 B4447\_LS\_CONTROL.TXT  
 SITE CALIBRATION INFORMATION HAS NOT BEEN PROVIDED FOR THIS PROJECT. IF FURTHER INFORMATION IS NEEDED, PLEASE CONTACT THE LOCATION AND SURVEYS UNIT.
- INDICATES GEODETIC CONTROL MONUMENTS USED OR SET FOR HORIZONTAL PROJECT CONTROL BY THE NCDOT LOCATION AND SURVEYS UNIT.  
 PROJECT CONTROL ESTABLISHED USING GLOBAL POSITIONING SYSTEM.  
 NETWORK ESTABLISHED FROM NGS ONLINE POSITIONING SERVICE (OPUS)

**DATUM DESCRIPTION**

THE LOCALIZED COORDINATE SYSTEM DEVELOPED FOR THIS PROJECT IS BASED ON THE STATE PLANE COORDINATES ESTABLISHED BY NCDOT FOR MONUMENT "B4447-2" WITH NAD 83 STATE PLANE GRID COORDINATES OF  
 NORTHING: 729103.9360(fft) EASTING: 1259985.4950(fft)  
 ELEVATION: 1209.43(fft)  
 THE AVERAGE COMBINED GRID FACTOR USED ON THIS PROJECT (GROUND TO GRID) IS: 0.999856593  
 THE N.C. LAMBERT GRID BEARING AND LOCALIZED HORIZONTAL GROUND DISTANCE FROM "B4447-2" TO -L- STATION 11+45.56 IS  
 N69°40'37.22"W 1367.03'  
 ALL LINEAR DIMENSIONS ARE LOCALIZED HORIZONTAL DISTANCES  
 VERTICAL DATUM USED IS NAVD 88

NOTE: DRAWING NOT TO SCALE

5/8/2017 10:51:00 AM \\proj\proj\B4447\_LS\_1C-1.dgn