

Approximate quantities only. Unclassified excavation, borrow excavation, fine grading, clearing and grubbing, and removal of existing pavement will be paid for at the lump sum price for "Grading".

STATE OF NORTH CAROLINA DIVISION OF HIGHWAYS

PROJ. REFERENCE NO.

SHEET NO.

B-4771

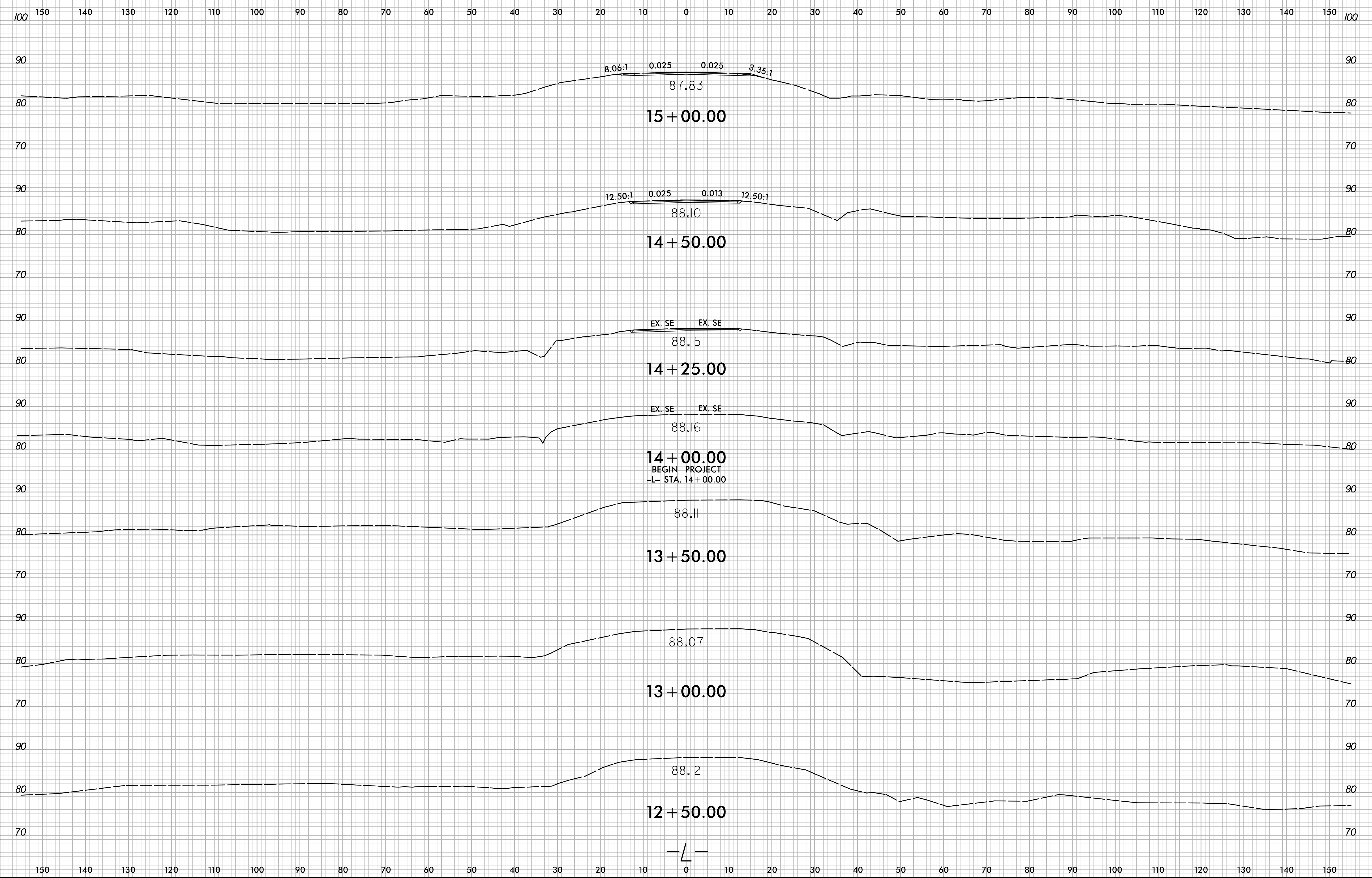
X-1A

NOTE: EMBANKMENT COLUMN DOES NOT INCLUDE BACKFILL FOR UNDERCUT

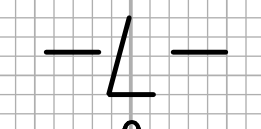
CROSS-SECTION SUMMARY

Station	Uncl. Exc.	Embt											
L	(cu. yd.)	(cu. yd.)											
14+25.00	0	0											
14+50.00	14	0											
15+00.00	28	0											
15+50.00	22	7											
Station	Uncl. Exc.	Embt											
L	(cu. yd.)	(cu. yd.)											
18+00.00	5	16											
18+50.00	10	31											
19+00.00	7	21											

NOTE: Earthwork quantities are calculated by the Roadway Design Unit. These Earthwork quantities are based in part on subsurface data provided by the Geotechnical Engineering Unit.

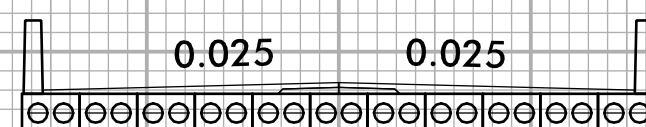


14 + 00.00
 BEGIN PROJECT
 -L- STA. 14 + 00.00



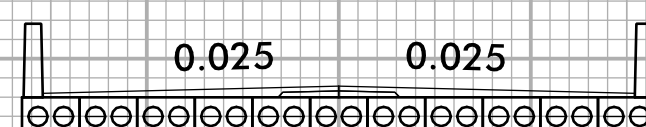
150 140 130 120 110 100 90 80 70 60 50 40 30 20 10 0 10 20 30 40 50 60 70 80 90 100 110 120 130 140 150

END BRIDGE
-L- STA. 17+70.75



82.26

17+50.00



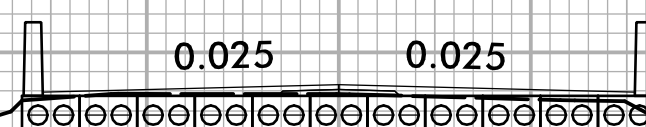
68.18

17+00.00



69.62

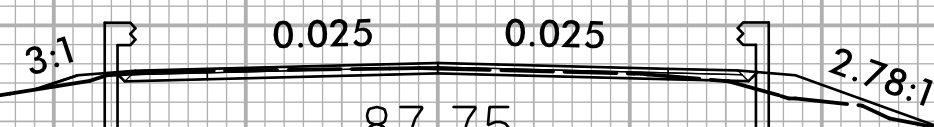
16+50.00



87.84

16+00.00

BEGIN BRIDGE
-L- STA. 15+93.25

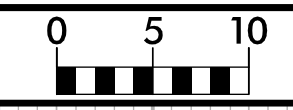


87.75

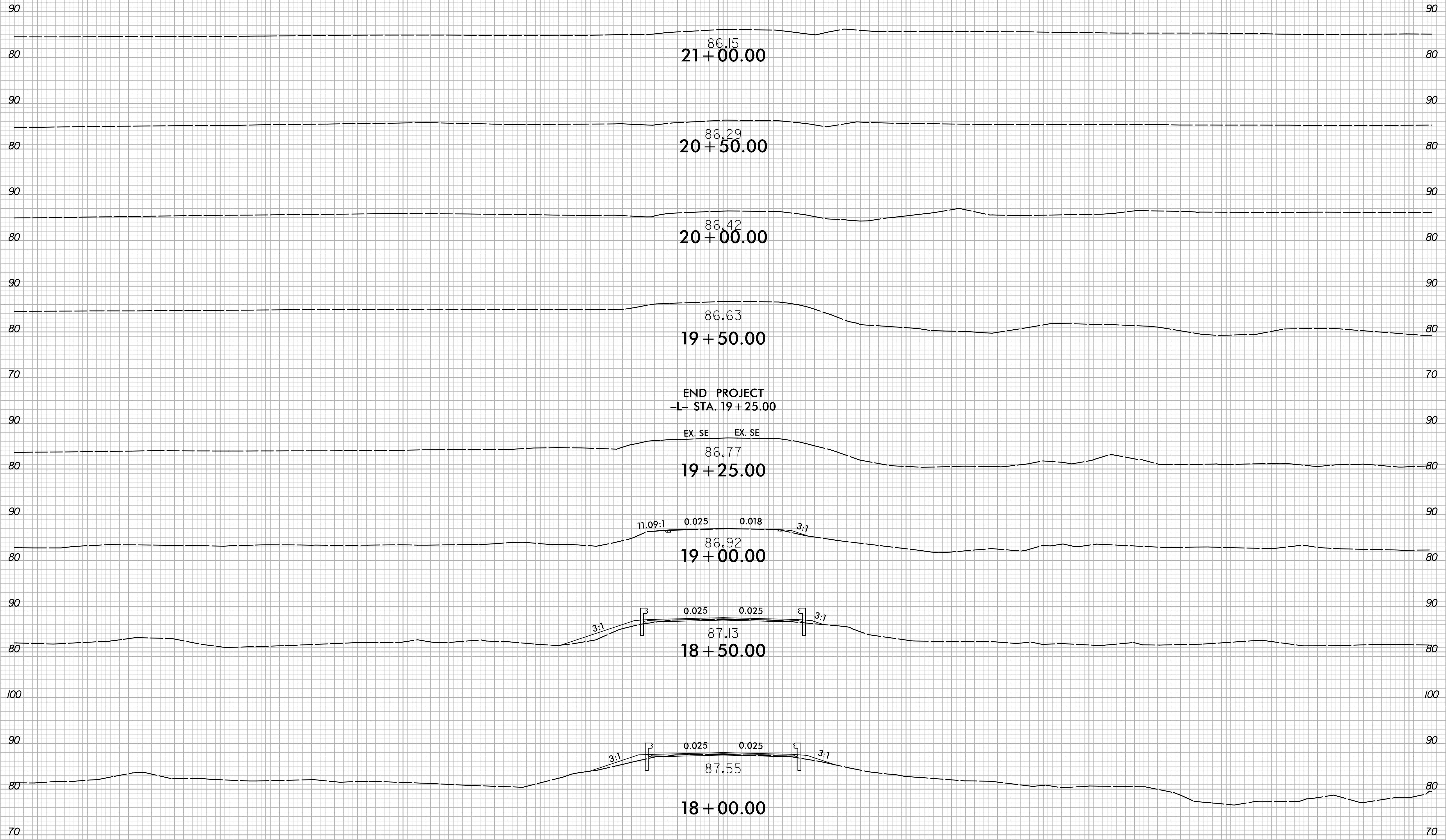
15+50.00

-L-

150 140 130 120 110 100 90 80 70 60 50 40 30 20 10 0 10 20 30 40 50 60 70 80 90 100 110 120 130 140 150



150 140 130 120 110 100 90 80 70 60 50 40 30 20 10 0 10 20 30 40 50 60 70 80 90 100 110 120 130 140 150



150 140 130 120 110 100 90 80 70 60 50 40 30 20 10 0 10 20 30 40 50 60 70 80 90 100 110 120 130 140 150