

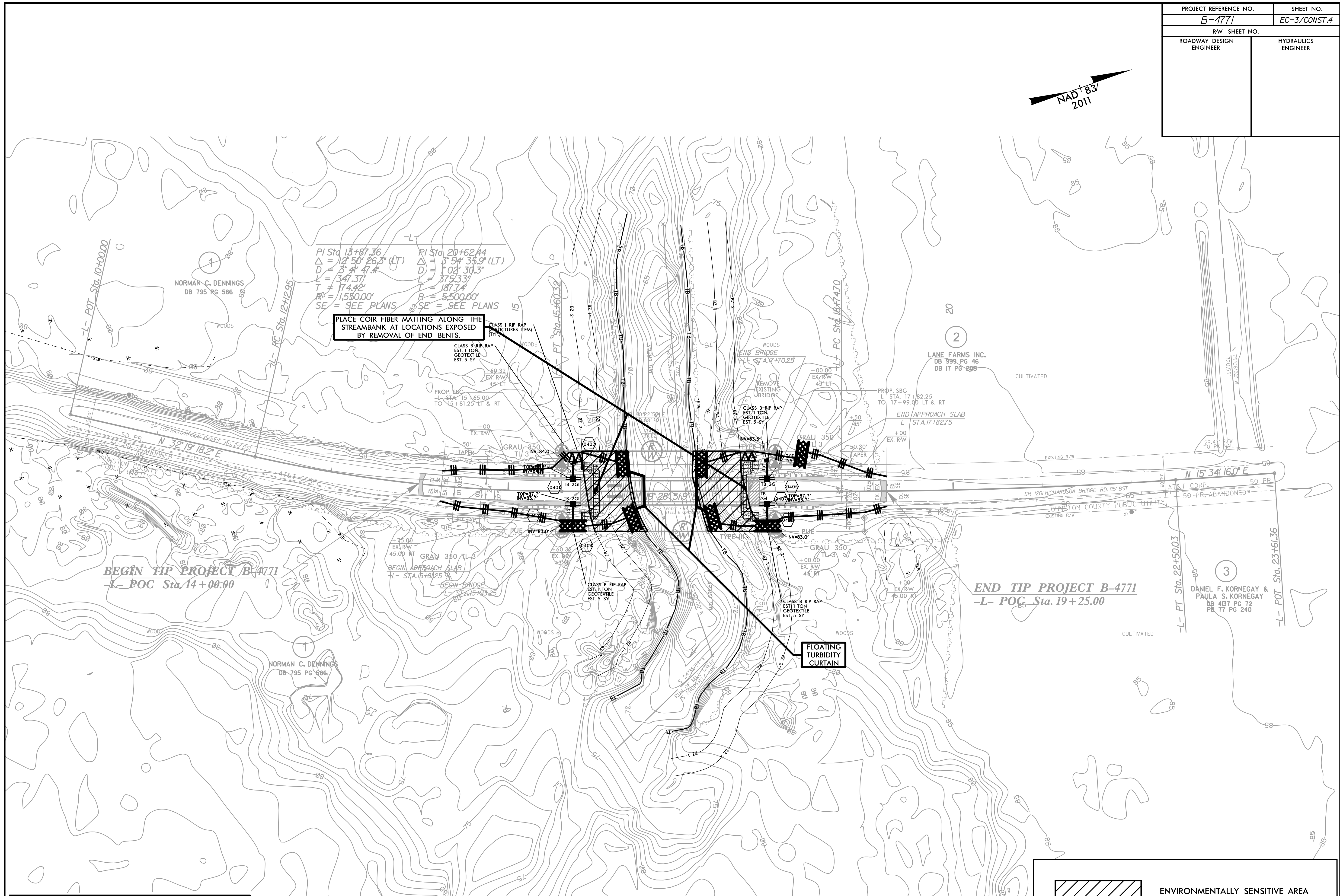
DIVISION OF HIGHWAYS
STATE OF NORTH CAROLINA

PROJECT REFERENCE NO. <i>B-4771</i>	SHEET NO. <i>EC-2</i>
ROADWAY DESIGN ENGINEER	HYDRAULICS ENGINEER

SOIL STABILIZATION TIMEFRAMES

<i>SITE DESCRIPTION</i>	<i>STABILIZATION TIME</i>	<i>TIMEFRAME EXCEPTIONS</i>
PERIMETER DIKES, SWALES, DITCHES AND SLOPES	7 DAYS	NONE
HIGH QUALITY WATER (HQW) ZONES	7 DAYS	NONE
SLOPES STEEPER THAN 3:1	7 DAYS	IF SLOPES ARE 10' OR LESS IN LENGTH AND ARE NOT STEEPER THAN 2:1, 14 DAYS ARE ALLOWED.
SLOPES 3:1 OR FLATTER	14 DAYS	7 DAYS FOR SLOPES GREATER THAN 50' IN LENGTH.
ALL OTHER AREAS WITH SLOPES FLATTER THAN 4:1	14 DAYS	NONE, EXCEPT FOR PERIMETERS AND HQW ZONES.

PROJECT REFERENCE NO. B-4771	SHEET NO. EC-3/CONST.4
RW SHEET NO.	
ROADWAY DESIGN ENGINEER	HYDRAULICS ENGINEER



PI Sta 13+87.36 PI Sta 20+62.44
 $\Delta = 125^{\circ} 26.3' (LT)$ $\Delta = 5^{\circ} 54' 35.9' (LT)$
 $D = 341.47'$ $D = 102' 30.3'$
 $L = 347.37'$ $L = 375.33'$
 $T = 174.42'$ $T = 187.74'$
 $R = 1,550.00'$ $R = 5,500.00'$
 SE = SEE PLANS SE = SEE PLANS

PLACE COIR FIBER MATTING ALONG THE STREAMBANK AT LOCATIONS EXPOSED BY REMOVAL OF END BENTS.

FLOATING TURBIDITY CURTAIN

BEGIN TIP PROJECT B-4771
L- POC Sta. 14+00.00

END TIP PROJECT B-4771
L- POC Sta. 19+25.00

NOTE:
PLACE TEMPORARY ROCK SEDIMENT DAMS TYPE - B AND TEMPORARY ROCK SILT CHECKS TYPE - A AT DRAINAGE OUTLETS.

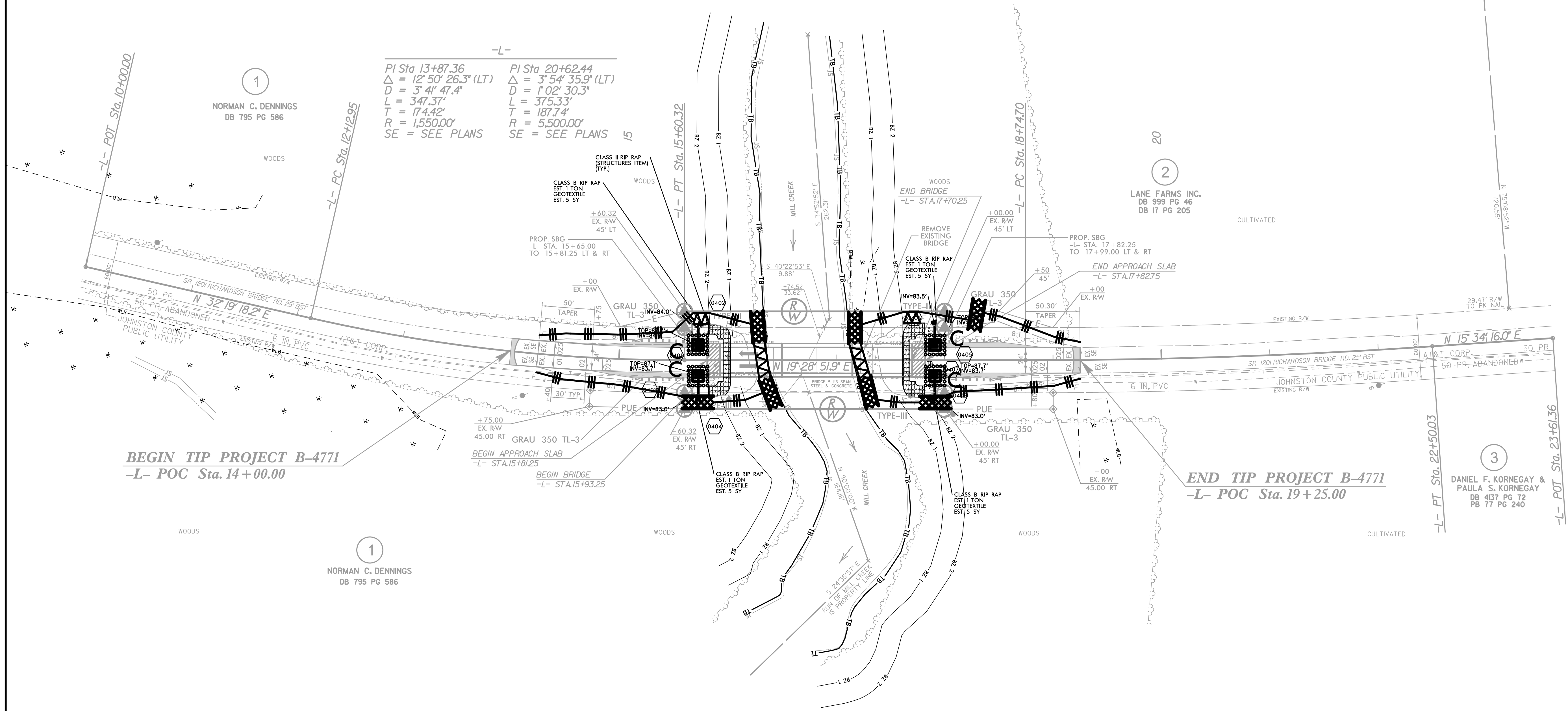
CLEARING AND GRUBBING EROSION CONTROL FOR CONSTRUCTION SHEET 4

 ENVIRONMENTALLY SENSITIVE AREA SEE PROJECT SPECIAL PROVISIONS

PROJECT REFERENCE NO.	SHEET NO.
B-4771	EC-4/CONST.4
RW SHEET NO.	
ROADWAY DESIGN ENGINEER	HYDRAULICS ENGINEER



Place Matting for Erosion Control on Slopes Adjacent to Permitted Wetlands as Work Allows.



-L-
 PI Sta. 13+87.36 PI Sta. 20+62.44
 $\Delta = 12^{\circ}50'26.3''$ (LT) $\Delta = 3^{\circ}54'35.9''$ (LT)
 $D = 3^{\circ}41'47.4''$ $D = 1^{\circ}02'30.3''$
 $L = 347.37'$ $L = 375.33'$
 $T = 174.42'$ $T = 187.74'$
 $R = 1,550.00'$ $R = 5,500.00'$
 SE = SEE PLANS SE = SEE PLANS

BEGIN TIP PROJECT B-4771
 -L- POC Sta. 14+00.00

BEGIN APPROACH SLAB
 -L- STA. 15+81.25

BEGIN BRIDGE
 -L- STA. 15+93.25

END TIP PROJECT B-4771
 -L- POC Sta. 19+25.00

-L- PT Sta. 22+50.03
 -L- POT Sta. 23+61.36

1
 NORMAN C. DENNING'S
 DB 795 PG 586

2
 LANE FARMS INC.
 DB 999 PG 46
 DB 17 PG 205

1
 NORMAN C. DENNING'S
 DB 795 PG 586

3
 DANIEL F. KORNEGAY &
 PAULA S. KORNEGAY
 DB 413 PG 72
 PB 77 PG 240