



CITY OF DURHAM PUBLIC WORKS DEPARTMENT	
ENGINEERING	APPROVED
STORM WATER	DATE: 2/17/17
TRANSPORTATION	DATE:

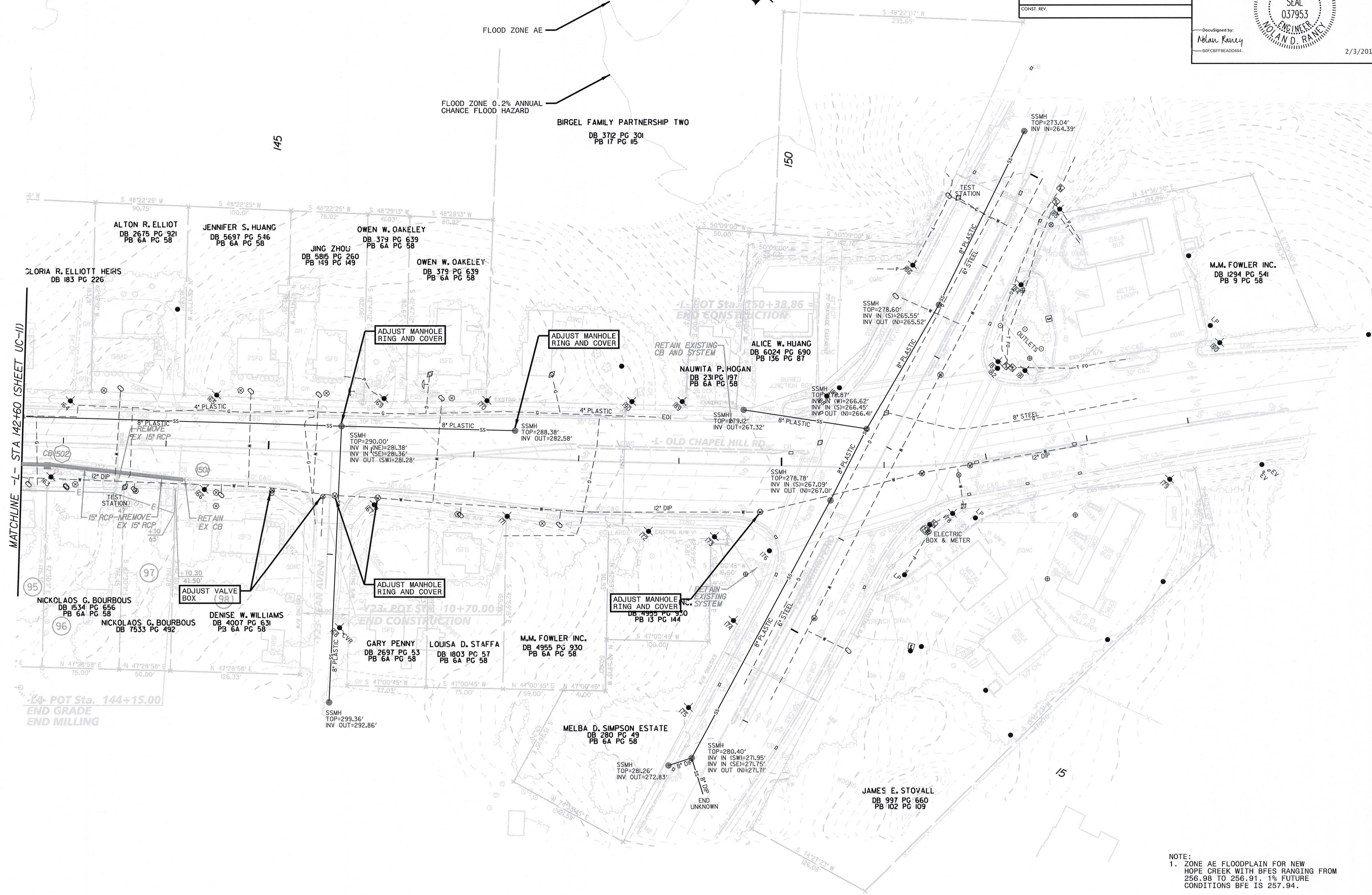
# Kimley»Horn

P.O. BOX 33068  
RALEIGH, N.C. 27636-3068

RIGHT-OF-WAY REV.  
CONST. REV.

PROJECT REFERENCE NO. EB-4707B	SHEET NO. UC-12
RW SHEET NO.	
UTILITY CONSTRUCTION ENGINEER	
Drawn/Designed by: Nolan Raney 80FCBF0040454	
2/3/2017	

K:\RAL\_Roadway\01036290 - EB-4707 Part B\Plan\Utilities\Plan View Sheets\EB-4707\_uc-12\_uc12\_psh.dgn 12/14/2016



NOTE:  
 1. ZONE AE FLOODPLAIN FOR NEW HOPE CREEK WITH BFES RANGING FROM 256.98 TO 256.91. 1% FUTURE CONDITIONS BFE IS 257.94.