

36
71' & 79'
2' BASE TAIL DITCH
SEE DETAIL 9
SHEET 2D-1
85 LF @ 0.6%
EST 40 CY DDE

ENGINEERING "NO IMPACT" CERTIFICATION

THIS IS TO CERTIFY THAT I AM A DULY LICENSED ENGINEER IN THE STATE OF NORTH CAROLINA. IT IS TO FURTHER CERTIFY THAT THE ATTACHED TECHNICAL DATA SUPPORTS THE FACT THAT NO IMPACT TO THE 100-YEAR FLOOD ELEVATIONS, FLOODWAY ELEVATIONS AND FLOODWAY WIDTHS ON CHAPEL HILL RD.

DocuSigned by:
Matt West
27372017

SEAL
029876
NORTH CAROLINA PROFESSIONAL ENGINEER
MATTHEW S. WEST

ENGINEERING	APPROVED	DATE	2/17/17
STORM WATER	MP	DATE	2/16/17
TRANSPORTATION		DATE	

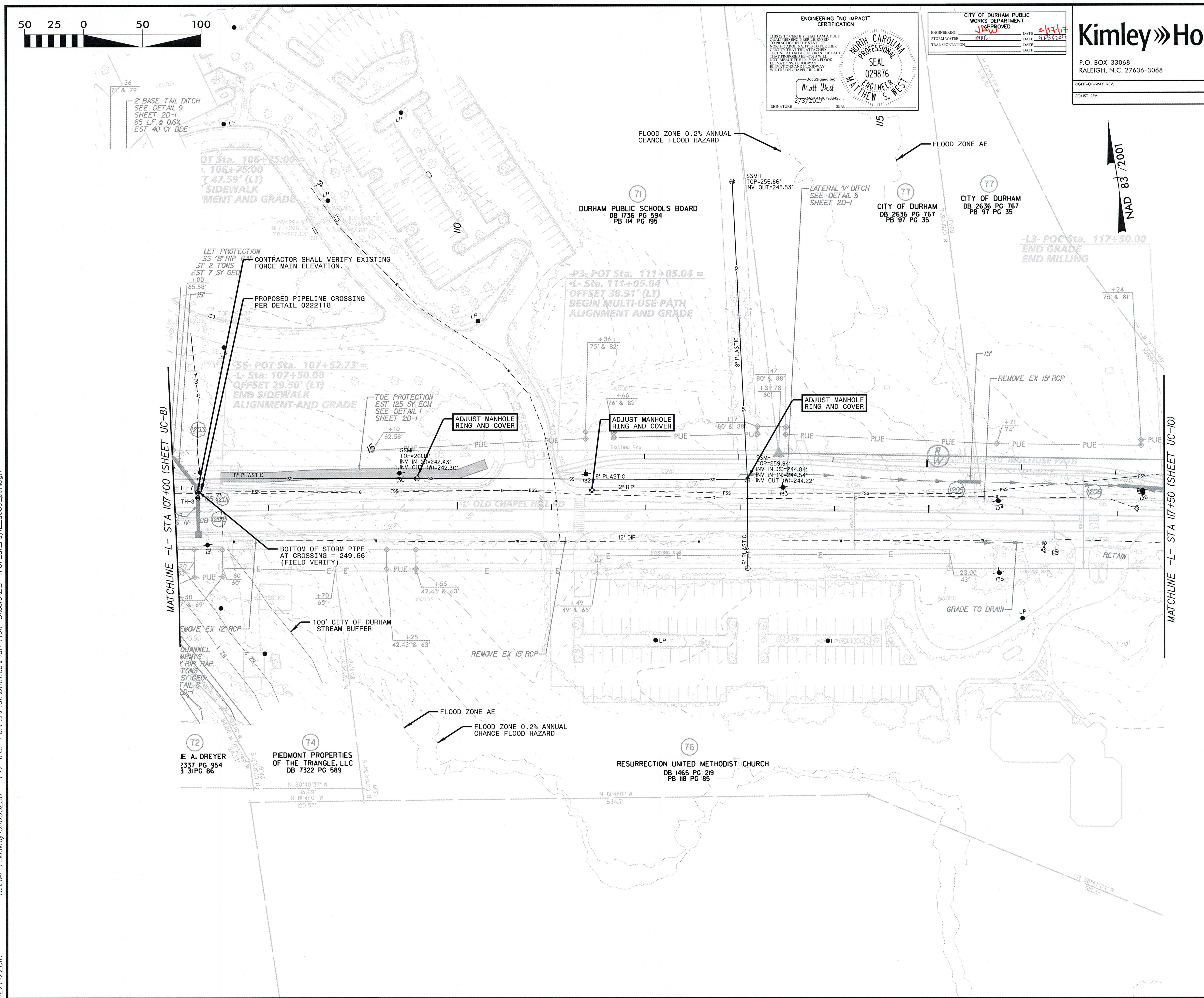
Kimley»Horn

P.O. BOX 33068
RALEIGH, N.C. 27636-3068

RIGHT-OF-WAY REV.
CONST. REV.

PROJECT REFERENCE NO.	SHEET NO.
EB-4707B	UC-9
RW SHEET NO.	
UTILITY CONSTRUCTION ENGINEER	
DocuSigned by: Alan Roney 2/3/2017	

- NOTE:
- BACKWATER ZONE AE FLOODPLAIN FOR NEW HOPE CREEK SHOWN WITH BFE OF 250.12. 1% FUTURE CONDITIONS BFE IS 251.04.
 - ZONE AE FLOODPLAIN FOR NEW HOPE CREEK WITH BFES RANGING FROM 256.64 TO 249.64. 1% FUTURE CONDITIONS BFE RANGE FROM 257.59 TO 250.58.



K:\RAL_Roadway\01036290 - EB-4707 Part B\Plan\Utilities\Plan View Sheets\EB-4707_uc-1_rdy\2_uc09_pst.dgn 12/14/2016