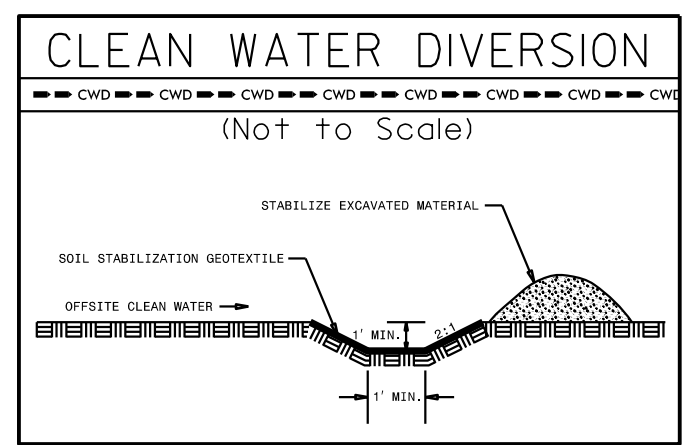
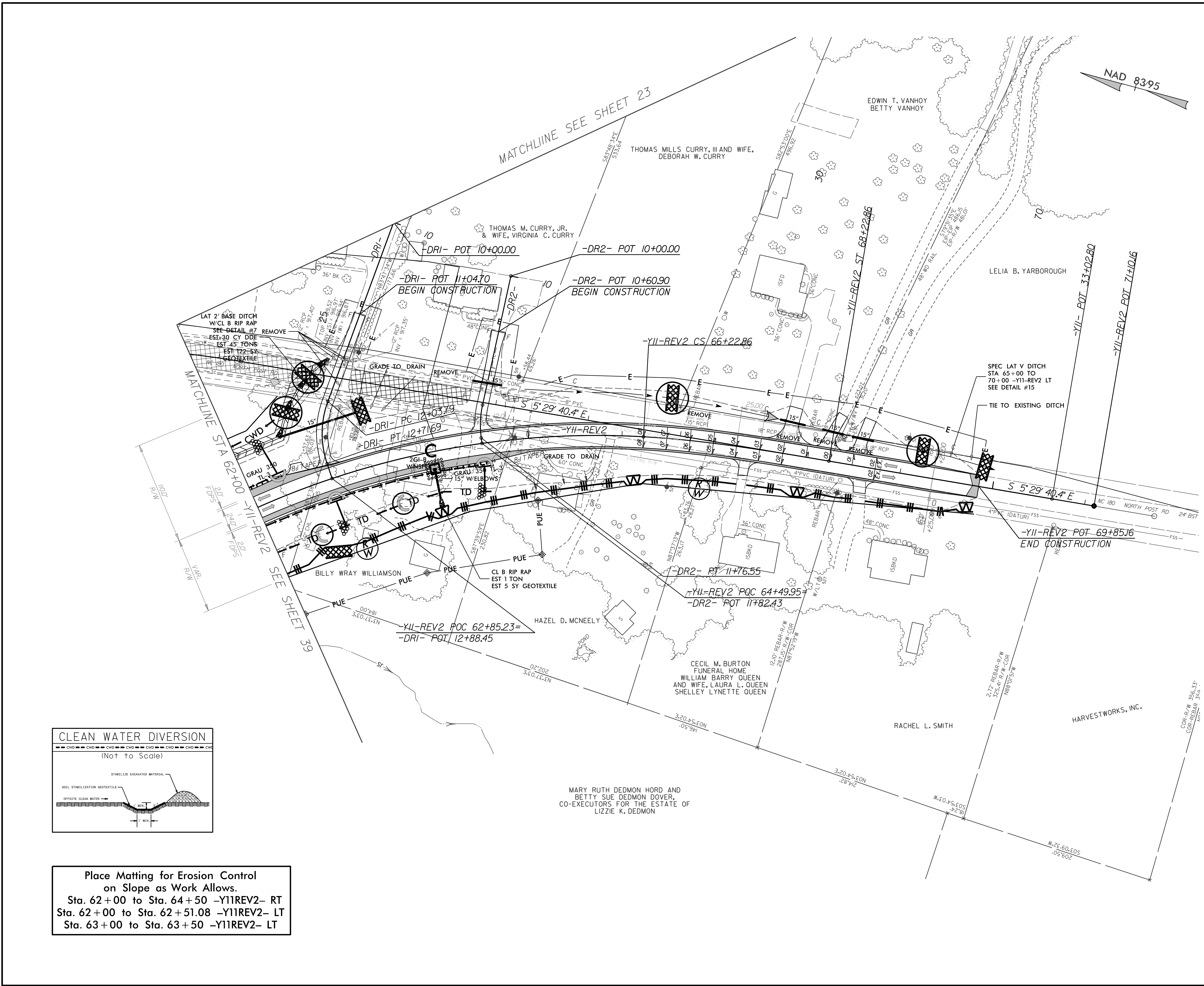


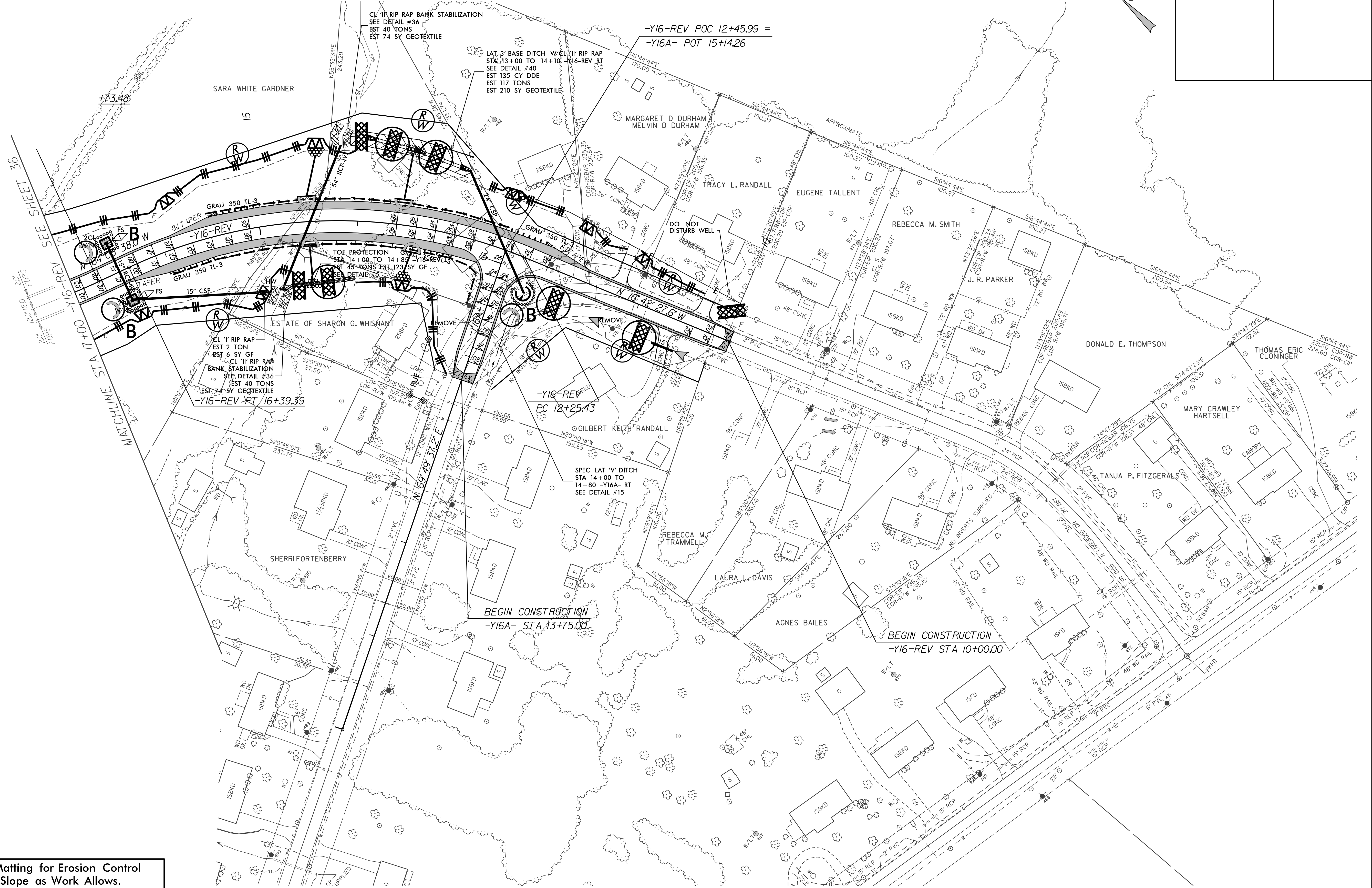
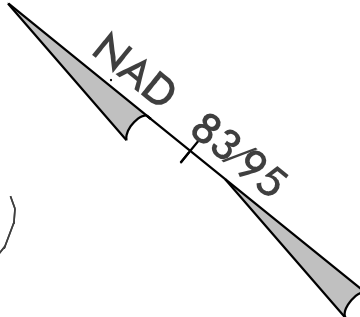
PROJECT REFERENCE NO.	SHEET NO.
R-2707C	EC-80/CONST.40
RW SHEET NO.	
ROADWAY DESIGN ENGINEER	HYDRAULICS ENGINEER



Place Matting for Erosion Control on Slope as Work Allows.
 Sta. 62+00 to Sta. 64+50 -Y11REV2- RT
 Sta. 62+00 to Sta. 62+51.08 -Y11REV2- LT
 Sta. 63+00 to Sta. 63+50 -Y11REV2- LT

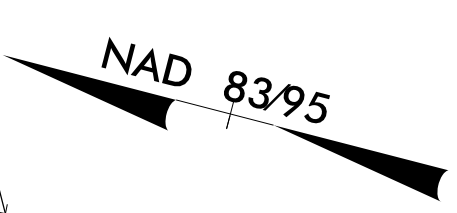
FOR -Y11-REV2 PROFILE SEE SHEET 67 & 68
 FOR -DRI- PROFILE SEE SHEET 68
 FOR -DR2- PROFILE SEE SHEET 68

PROJECT REFERENCE NO.	SHEET NO.
R-2707C	EC-81/CONST.41
RW SHEET NO.	
ROADWAY DESIGN ENGINEER	HYDRAULICS ENGINEER



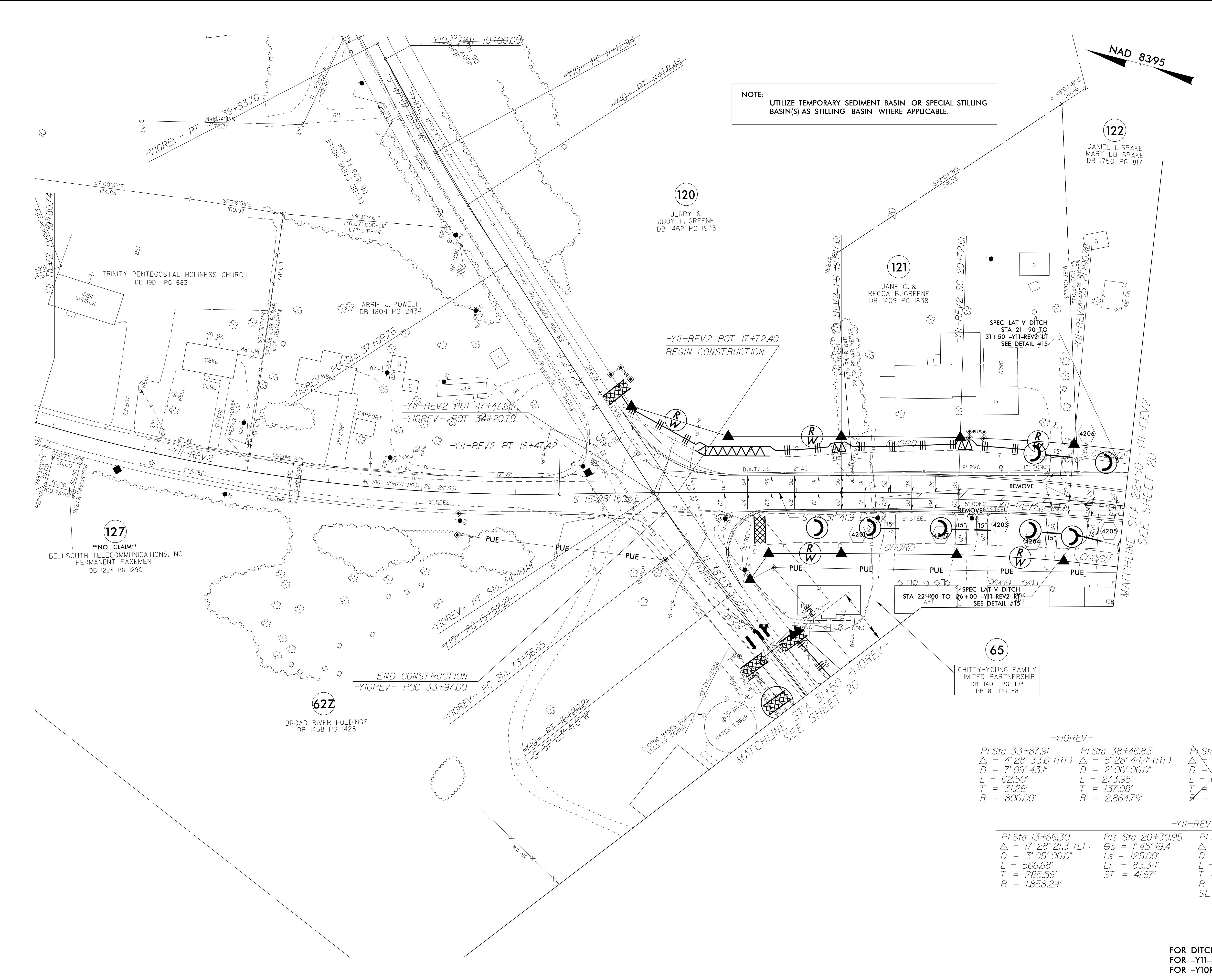
Place Matting for Erosion Control on Slope as Work Allows.
 Sta. 14+50 to Sta. 15+00 -Y16A- LT
 Sta. 12+50 to Sta. 15+50 -Y16REV- RT
 Sta. 13+00 to Sta. 16+00 -Y16REV- LT

PROJECT REFERENCE NO. R-2707C		SHEET NO. EC-82/CONST.42	
RW SHEET NO.		HYDRAULICS ENGINEER	
ROADWAY DESIGN ENGINEER			



NOTE:
UTILIZE TEMPORARY SEDIMENT BASIN OR SPECIAL STILLING BASIN(S) AS STILLING BASIN WHERE APPLICABLE.

REVISIONS
R/W REVISION ON LET PROJECT 6-22-17 (TEH) - ADDED PARCEL 127 - PARCELS 120, 121 AND 127 - ADDED PUE
R/W REVISION ON LET PROJECT 8-18-17 (TEH) - RELOCATED PARCEL 127 AND ADDED PARCEL 62
R/W REVISION ON LET PROJECT 1-24-18 (DGM) - COMBINED PARCEL 123 AND PARCEL 122 OWNER CHANGED TO DANIEL I SPAKE, PARCEL 123 REMOVED
CONST. REV. 103/XX/2021-REMOVED -Y10- ALIGNMENT AND ADDED -Y10REV-ADDED 2 CLAIMS TO PARCELS 62,63,65



127
NO CLAIM
BELLSOUTH TELECOMMUNICATIONS, INC
PERMANENT EASEMENT
DB 1224 PG 1290

622
BROAD RIVER HOLDINGS
DB 1458 PG 1428

120
JERRY &
JUDY H. GREENE
DB 1462 PG 1973

121
JANE G. &
RECCA B. GREENE
DB 1409 PG 1838

122
DANIEL I. SPAKE
MARY LU SPAKE
DB 1750 PG 817

65
CHITTY-YOUNG FAMILY
LIMITED PARTNERSHIP
DB 1140 PG 1193
PB 8 PG 88

-Y10REV-		-Y10-	
PI Sta 33+87.91	PI Sta 38+46.83	PI Sta 11+49.72	PI Sta 16+18.58
$\Delta = 4' 28' 33.6''$ (RT)	$\Delta = 5' 28' 44.4''$ (RT)	$\Delta = 4' 38' 15.9''$ (LT)	$\Delta = 5' 08' 30.1''$ (LT)
D = 7' 09' 43.1"	D = 2' 00' 00.0"	D = 7' 00' 00.0"	D = 4' 00' 00.0"
L = 62.50'	L = 273.95'	L = 85.54'	L = 128.54'
T = 31.26'	T = 137.08'	T = 32.79'	T = 64.31'
R = 800.00'	R = 2,864.79'	R = 818.51'	R = 1432.39'

-Y11-REV2			
PIs Sta 13+66.30	PIs Sta 20+30.95	PI Sta 21+31.71	PIs Sta 22+32.45
$\Delta = 17' 28' 21.3''$ (LT)	$\Theta_s = 1' 45' 19.4''$	$\Delta = 3' 19' 08.1''$ (RT)	$\Theta_s = 1' 45' 19.4''$
D = 3' 05' 00.0"	Ls = 125.00'	D = 2' 48' 31.0"	Ls = 125.00'
L = 566.68'	LT = 83.34'	L = 118.17'	LT = 83.34'
T = 285.56'	ST = 41.67'	T = 59.10'	ST = 41.67'
R = 1,858.24'		R = 2,040.00'	
		SE = .05	

FOR DITCH DETAILS SEE SHEETS 2D-1 AND 2D-2
FOR -Y11-REV2 PROFILE SEE SHEET 66
FOR -Y10REV- PROFILE SEE SHEET 78