

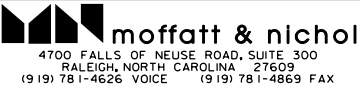

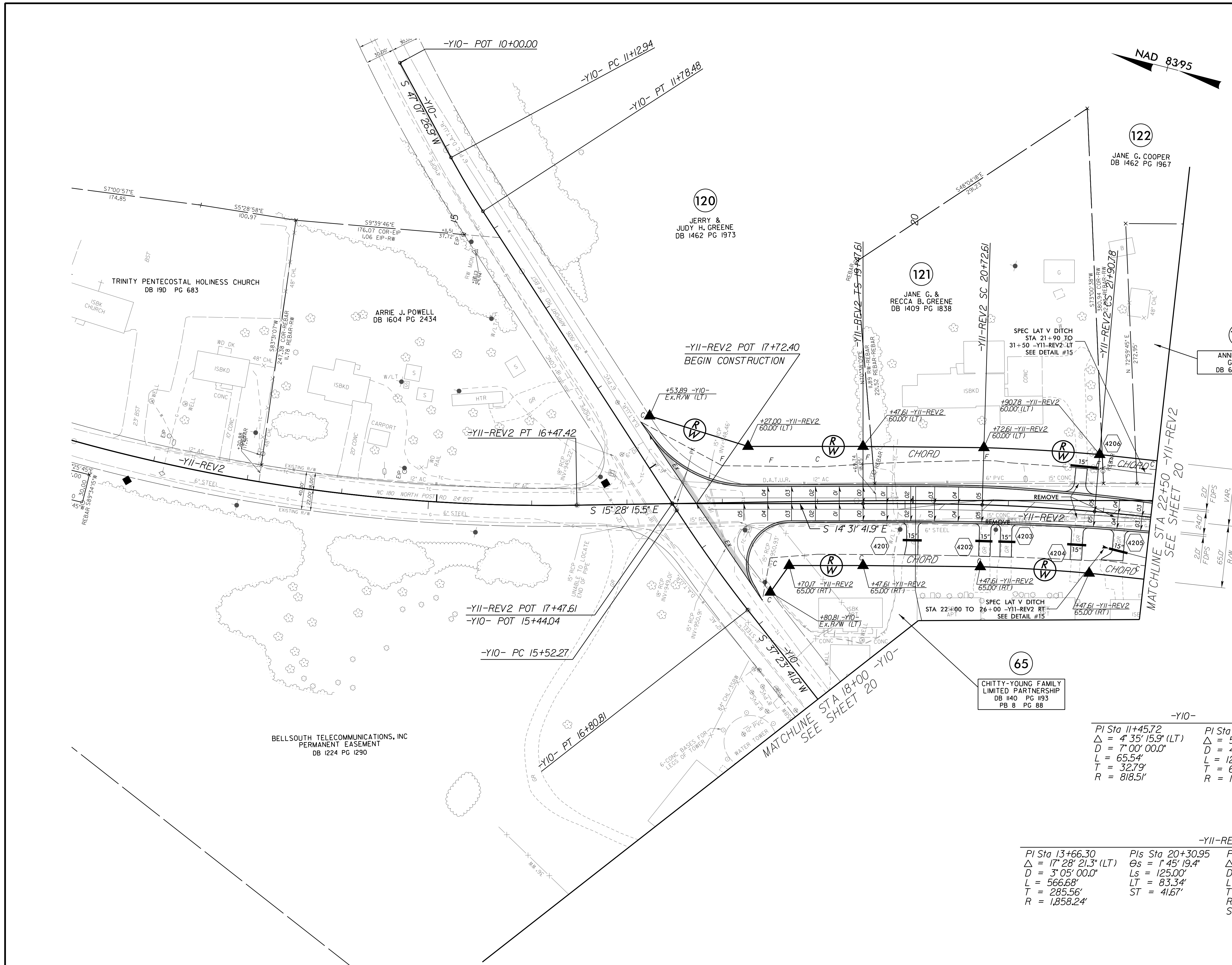


PROJECT REFERENCE NO. <i>R-2707C</i>		SHEET NO. 42	
RW SHEET NO.			
ROADWAY DESIGN ENGINEER		HYDRAULICS ENGINEER	
			
			
DOCUMENT NOT CONSIDERED FINAL UNLESS ALL SIGNATURES COMPLETED			



-Y10-

PI Sta 11+45.72	PI Sta 16+16.58
$\Delta = 4' 35' 15.9" (LT)$	$\Delta = 5' 08' 30.1" (LT)$
$D = 7' 00' 00.0"$	$D = 4' 00' 00.0"$
$L = 65.54'$	$L = 128.54'$
$T = 32.79'$	$T = 64.31'$
$R = 818.51'$	$R = 1432.39'$

-Y11-REV2

PI Sta 13+66.30	PIs Sta 20+30.95	PI Sta 21+31.71	PIs Sta 22+32.45
$\Delta = 17' 28' 21.3" (LT)$	$\Delta = 1' 45' 19.4"$	$\Delta = 3' 19' 08.1" (RT)$	$\Delta = 1' 45' 19.4"$
$D = 3' 05' 00.0"$	$Ds = 125.00'$	$D = 2' 48' 31.0"$	$Ls = 125.00'$
$L = 566.68'$	$LT = 83.34'$	$L = 118.17'$	$LT = 83.34'$
$T = 285.56'$	$ST = 41.67'$	$T = 59.10'$	$ST = 41.67'$
$R = 1,858.24'$		$R = 2,040.00'$	$SE = .05$