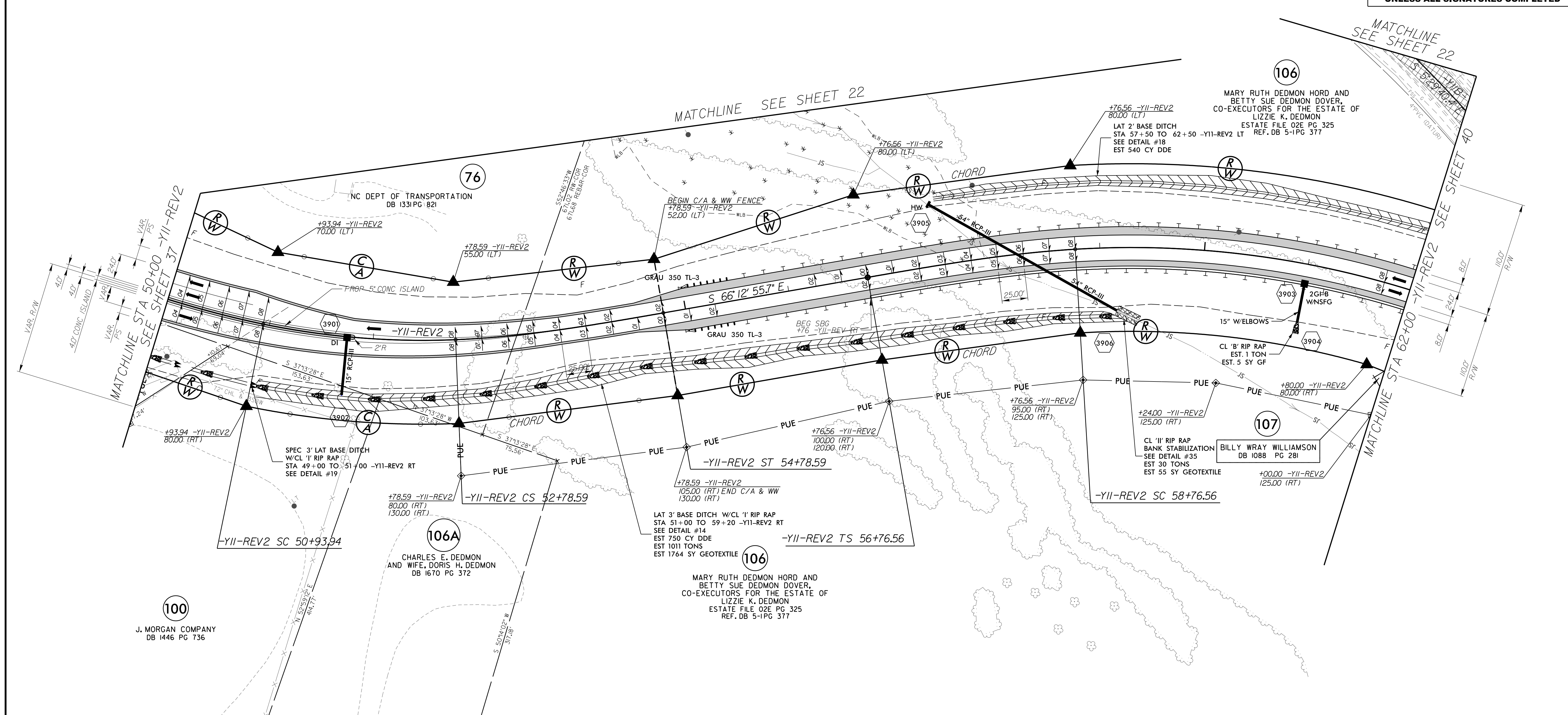
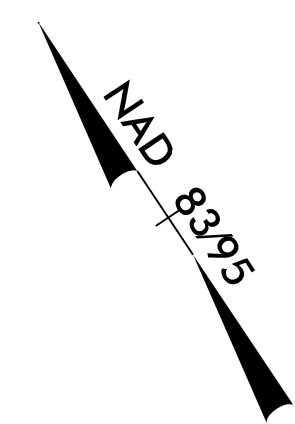


PROJECT REFERENCE NO. <i>R-2707C</i>		SHEET NO. 39	
RW SHEET NO.			
ROADWAY DESIGN ENGINEER		HYDRAULICS ENGINEER	
DOCUMENT NOT CONSIDERED FINAL UNLESS ALL SIGNATURES COMPLETED			



100
J. MORGAN COMPANY
DB 1446 PG 736

106A
CHARLES E. DEDMON
AND WIFE, DORIS H. DEDMON
DB 1670 PG 372

106
MARY RUTH DEDMON HORD AND
BETTY SUE DEDMON DOVER,
CO-EXECUTORS FOR THE ESTATE OF
LIZZIE K. DEDMON
ESTATE FILE 02E PG 325
REF. DB 5-1PG 377

107
BILLY WRAY WILLIAMSON
DB 1088 PG 281

-Y11-REV2				
<i>Pls Sta 50+27.39</i>	<i>Pl Sta 51+86.72</i>	<i>Pls Sta 53+45.36</i>	<i>Pls Sta 58+09.98</i>	<i>Pl Sta 62+73.06</i>
<i>Os = 7' 32' 20.1"</i>	<i>Δ = 13' 55' 13.1" (LT)</i>	<i>Os = 7' 32' 20.1"</i>	<i>Os = 6' 25' 00.0"</i>	<i>Δ = 47' 53' 15.3" (RT)</i>
<i>Ls = 200.00'</i>	<i>D = 7' 32' 20.1"</i>	<i>Ls = 200.00'</i>	<i>Ls = 200.00'</i>	<i>D = 6' 25' 00.0"</i>
<i>LT = 133.45'</i>	<i>L = 184.65'</i>	<i>LT = 133.45'</i>	<i>LT = 133.42'</i>	<i>L = 746.30'</i>
<i>ST = 66.78'</i>	<i>T = 92.78'</i>	<i>ST = 66.78'</i>	<i>ST = 66.75'</i>	<i>T = 396.50'</i>
	<i>R = 760.00'</i>			<i>R = 892.92'</i>
	<i>SE = .08</i>			<i>SE = .08</i>
	<i>RO = 200'</i>			<i>RO = 200'</i>