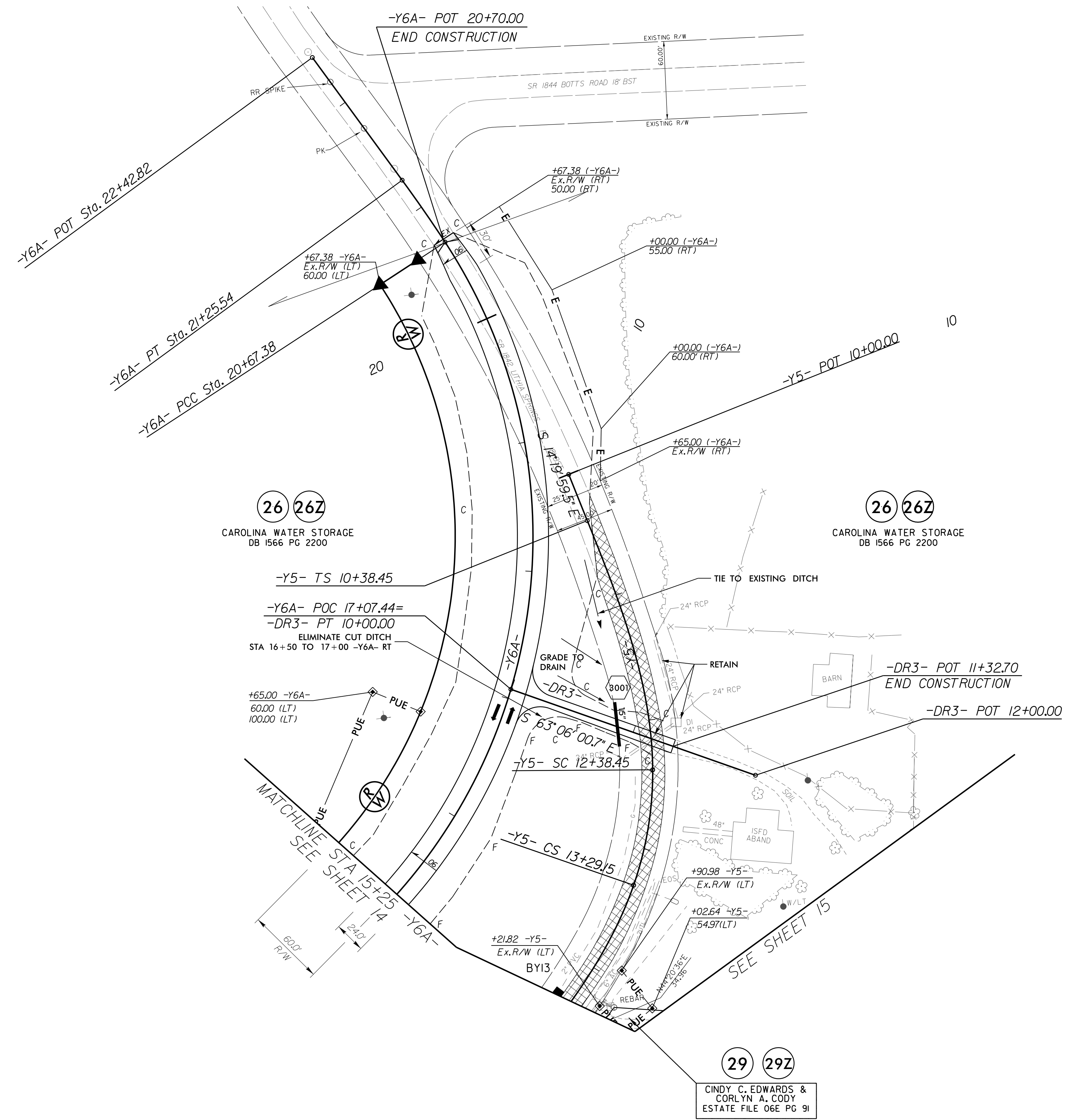


PROJECT REFERENCE NO. <i>R-2707C</i>		SHEET NO. 30	
RW SHEET NO.			
ROADWAY DESIGN ENGINEER		HYDRAULICS ENGINEER	
DOCUMENT NOT CONSIDERED FINAL UNLESS ALL SIGNATURES COMPLETED			

NAD 8395



26 267
CAROLINA WATER STORAGE
DB 1566 PG 2200

26 267
CAROLINA WATER STORAGE
DB 1566 PG 2200

-Y6A-		
PI Sta 20+81.72	PI Sta 20+96.47	
$\Delta = 134^{\circ} 26' 02.0''$ (LT)	$\Delta = 3^{\circ} 00' 07.2''$ (LT)	
D = 13' 48' 22.4"	D = 5' 09' 42.4"	
L = 973.72'	L = 58.16'	
T = 988.06'	T = 29.09'	
R = 415.00'	R = 1110.00'	
SE = .06	SE = .05	
RO = 100'	RO = EXIST.	
-Y5-		
PIs Sta 11+72.78	PI Sta 12+84.24	PIs Sta 13+96.72
$\Delta s = 21^{\circ} 30' 00.0''$	$\Delta = 19^{\circ} 29' 59.5''$ (RT)	$\Delta s = 21^{\circ} 30' 00.0''$
Ls = 200.00'	D = 21' 30' 00.0"	Ls = 200.00'
LT = 134.33'	L = 90.70'	LT = 134.33'
ST = 67.57'	T = 45.79'	ST = 67.57'
	R = 266.49	

29 29Z
CINDY C. EDWARDS &
CORLYN A. CODY
ESTATE FILE 06E PG 91

FOR -Y6A- PROFILE SEE SHEET 58
FOR -DR3- PROFILE SEE SHEET 58