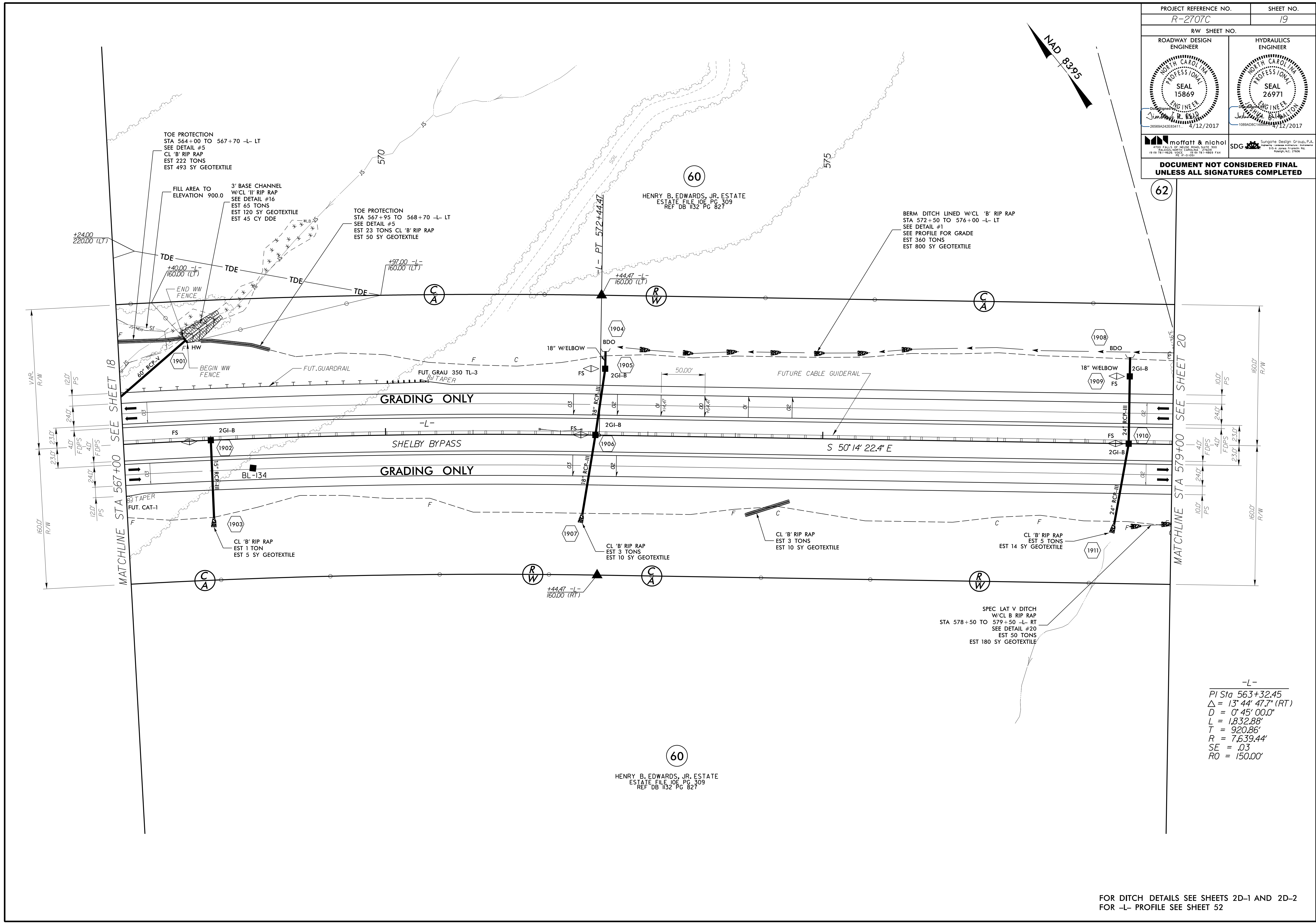


PROJECT REFERENCE NO. <i>R-2707C</i>	SHEET NO. 19
RW SHEET NO.	
ROADWAY DESIGN ENGINEER	HYDRAULICS ENGINEER
DOCUMENT NOT CONSIDERED FINAL UNLESS ALL SIGNATURES COMPLETED	



62

60

60

-L-  
 PI Sta 563+32.45  
 $\Delta = 13^\circ 44' 47.7''$  (RT)  
 $D = 0' 45' 00.0''$   
 $L = 1,832.88'$   
 $T = 920.86'$   
 $R = 7,639.44'$   
 $SE = .03$   
 $RO = 150.00'$

FOR DITCH DETAILS SEE SHEETS 2D-1 AND 2D-2  
 FOR -L- PROFILE SEE SHEET 52