

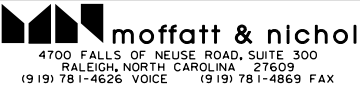

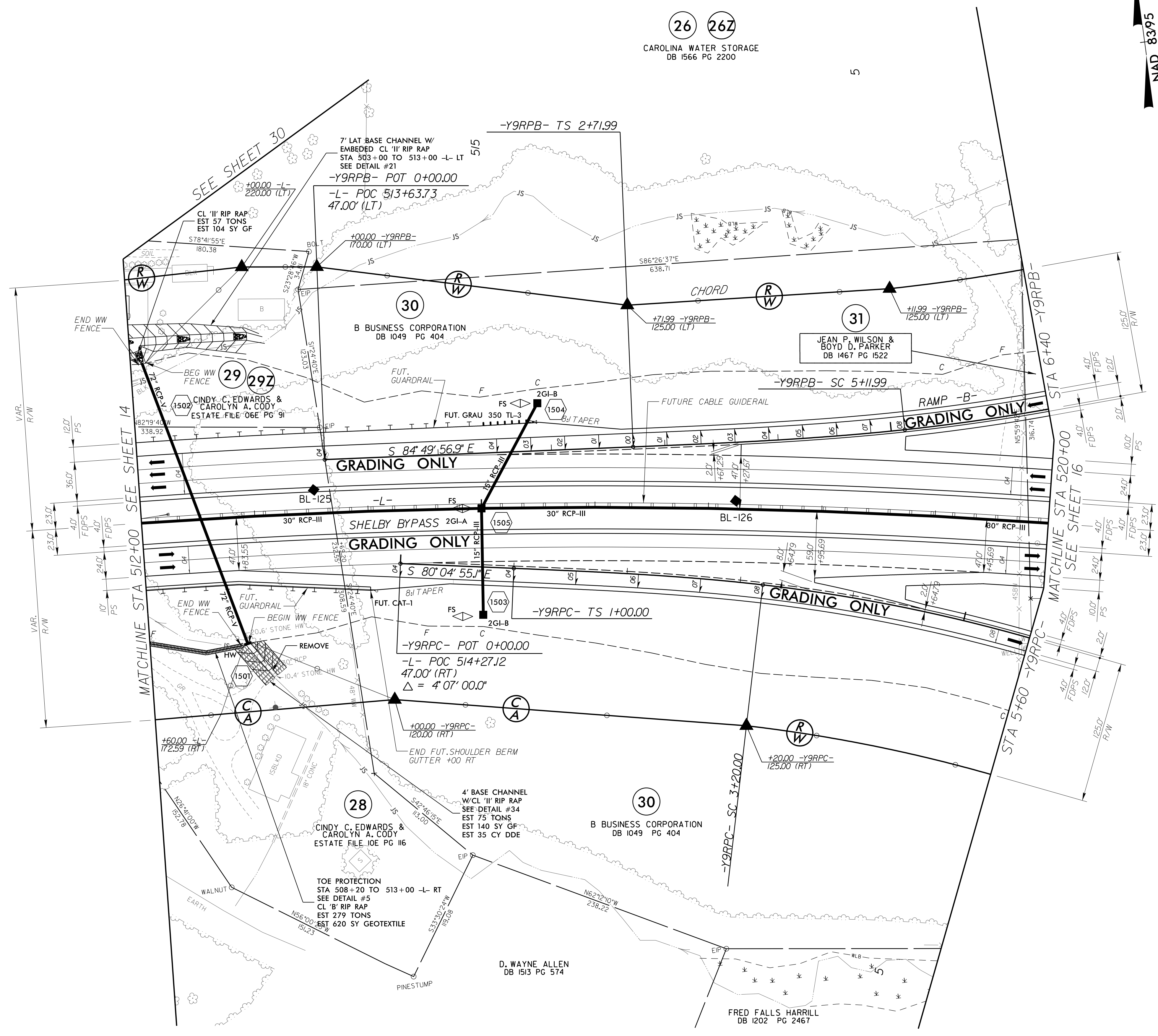


PROJECT REFERENCE NO. <i>R-2707C</i>		SHEET NO. 15	
RW SHEET NO.			
ROADWAY DESIGN ENGINEER		HYDRAULICS ENGINEER	
 JAMES R. EDD 25569A24253411... 4/12/2017		 JOSHUA B. HAMILTON 109849A24253411... 4/12/2017	
 moffatt & nichol 4700 FALLS OF THE CATAWHA, SUITE 300 FREDERICKSBURG, VIRGINIA 22405 1910 781-4681 VOICE 1-800-781-4689 FAX 781-4681		 Sunshine Design Group, P.A. 1114 JONES FRANKLIN RD. RALEIGH, N.C. 27608	
DOCUMENT NOT CONSIDERED FINAL UNLESS ALL SIGNATURES COMPLETED			



-L-
 PI Sta 520+51.6
 $\Delta = 26' 25'' 21.1''$ (RT)
 $D = 1' 00'' 00.0''$
 $L = 2,642.25'$
 $T = 1,345.05'$
 $R = 5,729.58'$
 $SE = .04$
 $RO = 200'$

-Y9RPB-
 Pls Sta 4+32.03 PI Sta 7+59.93
 $\Theta_s = 3' 46'' 39.9''$ $\Delta = 15' 30'' 56.3''$ (LT)
 $L_s = 240.00'$ $D = 3' 08'' 53.2''$
 $LT = 160.04'$ $L = 492.85'$
 $ST = 80.03'$ $T = 247.94'$
 $R = 1,820.00'$
 $SE = .08$
 $RO = 220'$

-Y9RPC-
 Pls Sta 2+46.71 PI Sta 6+42.46
 $\Theta_s = 4' 14'' 38.9''$ $\Delta = 24' 30'' 08.9''$ (RT)
 $L_s = 220.00'$ $D = 3' 51'' 29.9''$
 $LT = 146.71'$ $L = 635.06'$
 $ST = 73.37'$ $T = 322.46'$
 $R = 1,485.00'$
 $SE = .08$
 $RO = 220'$

FOR DITCH DETAILS SEE SHEETS 2D-1 AND 2D-2
 FOR -L- PROFILE SEE SHEET 49
 FOR -Y9RPB- PROFILE SEE SHEET 62
 FOR -Y9RPC- PROFILE SEE SHEET 63