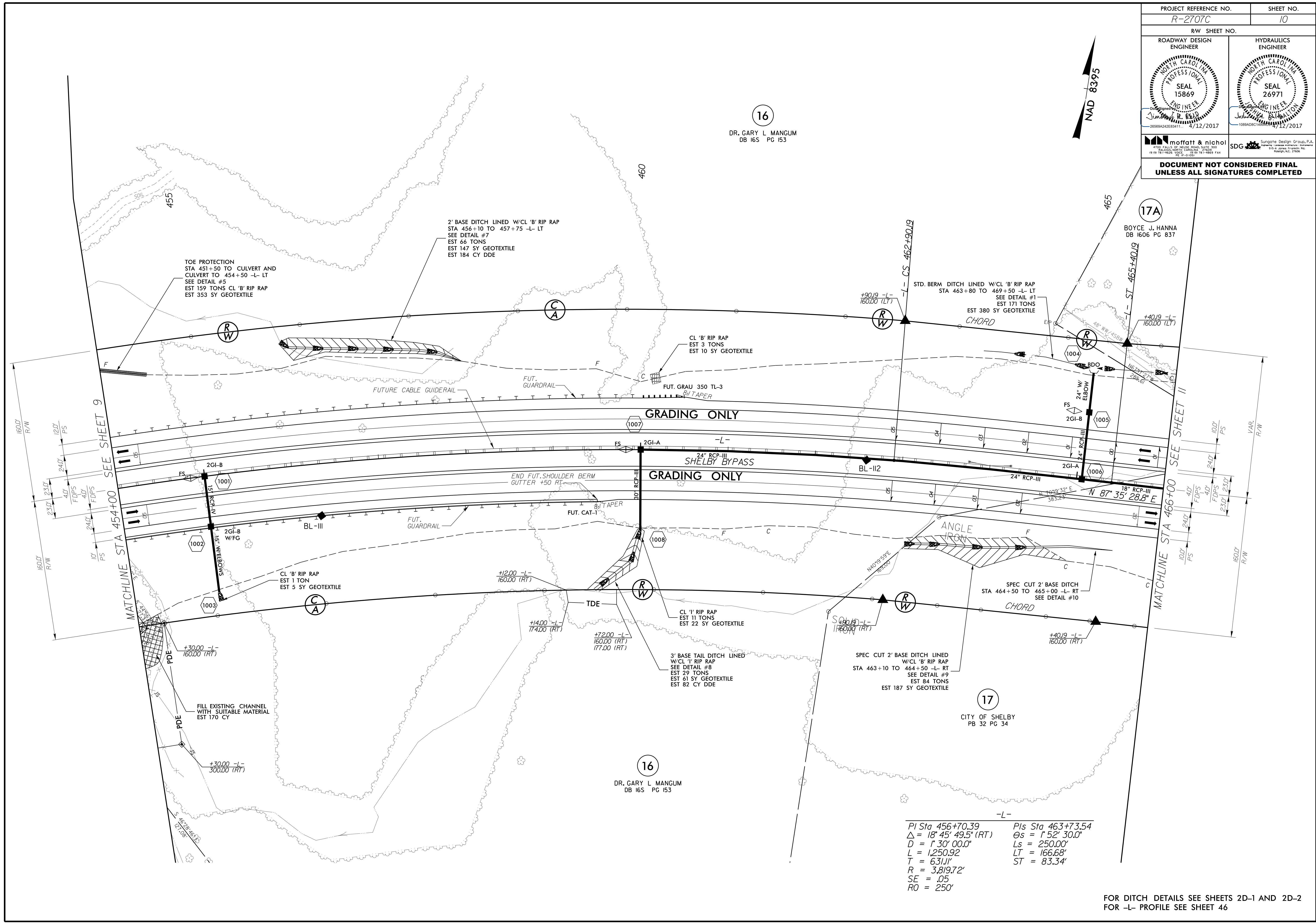
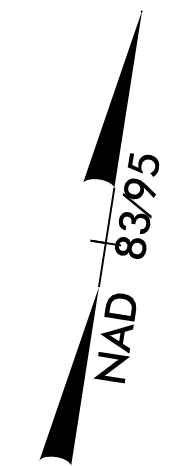


PROJECT REFERENCE NO. R-2707C	SHEET NO. 10
RW SHEET NO.	
ROADWAY DESIGN ENGINEER	HYDRAULICS ENGINEER
MOFFATT & NICHOL 1700 FALLS OF THE ROANOKE, SUITE 300 FLEETWOOD, VIRGINIA 22031 TEL: 703-464-1000 FAX: 703-464-1001 WWW.MOFFATTANDNICHOL.COM	SDG Sungate Design Group, P.A. 1100 W. JONES FRENCH RD. RALEIGH, NC 27608

DOCUMENT NOT CONSIDERED FINAL  
UNLESS ALL SIGNATURES COMPLETED



16  
DR. GARY L. MANGUM  
DB 16S PG 153



17A  
BOYCE J. HANNA  
DB 1606 PG 837

16  
DR. GARY L. MANGUM  
DB 16S PG 153

17  
CITY OF SHELBY  
PB 32 PG 34

-L-  
 PI Sta 456+70.39      Pls Sta 463+73.54  
 $\Delta = 18^{\circ} 45' 49.5''$  (RT)       $\Theta s = 1^{\circ} 52' 30.0''$   
 $D = 1^{\circ} 30' 00.0''$        $Ls = 250.00'$   
 $L = 1,250.92$        $LT = 166.68'$   
 $T = 631.11'$        $ST = 83.34'$   
 $R = 3,819.72'$   
 $SE = .05$   
 $RO = 250'$

FOR DITCH DETAILS SEE SHEETS 2D-1 AND 2D-2  
FOR -L- PROFILE SEE SHEET 46