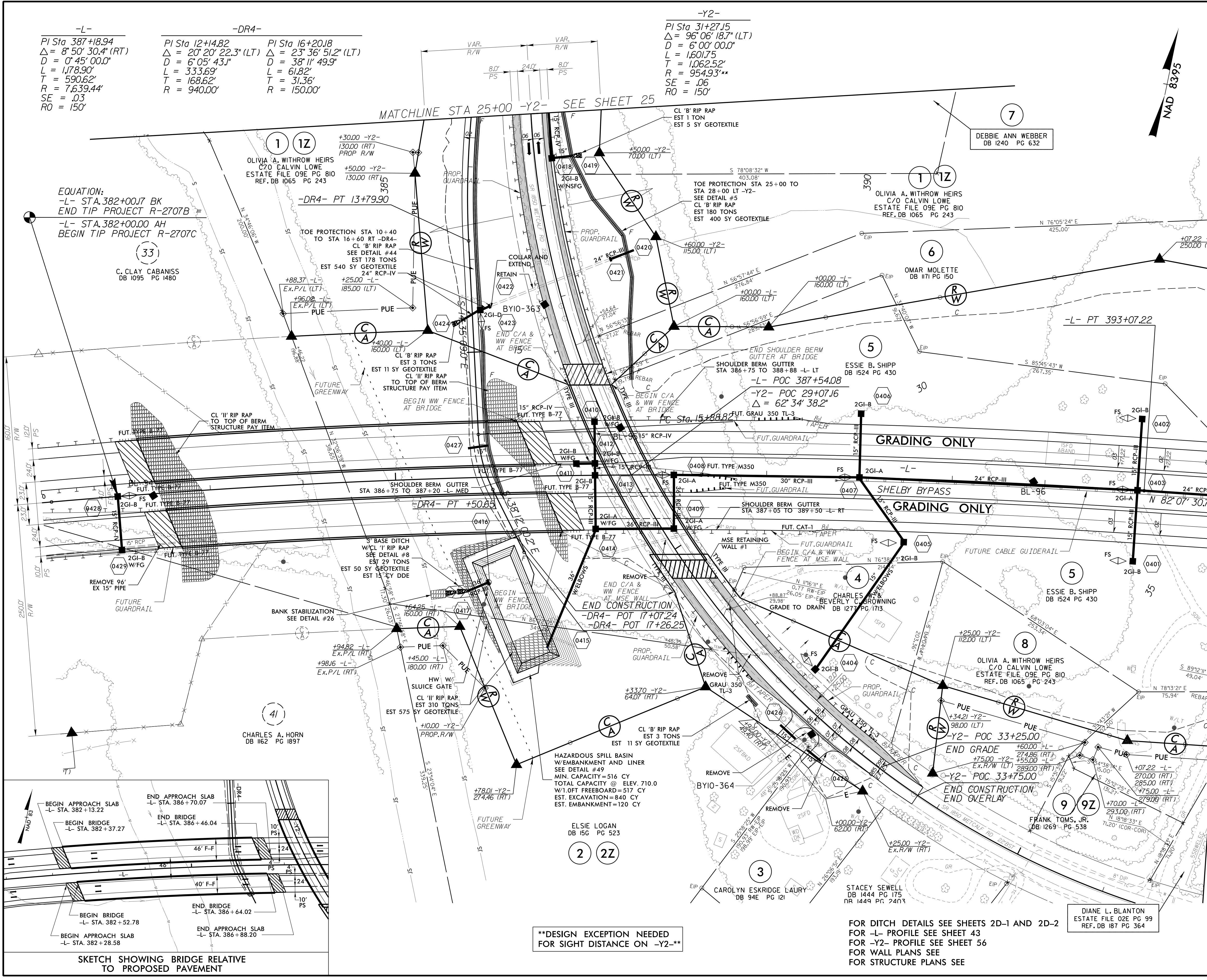


PROJECT REFERENCE NO. R-2707C		SHEET NO. 4	
RW SHEET NO.		HYDRAULICS ENGINEER	
ROADWAY DESIGN ENGINEER		SEAL 15869	
DOCUMENT NOT CONSIDERED FINAL UNLESS ALL SIGNATURES COMPLETED			



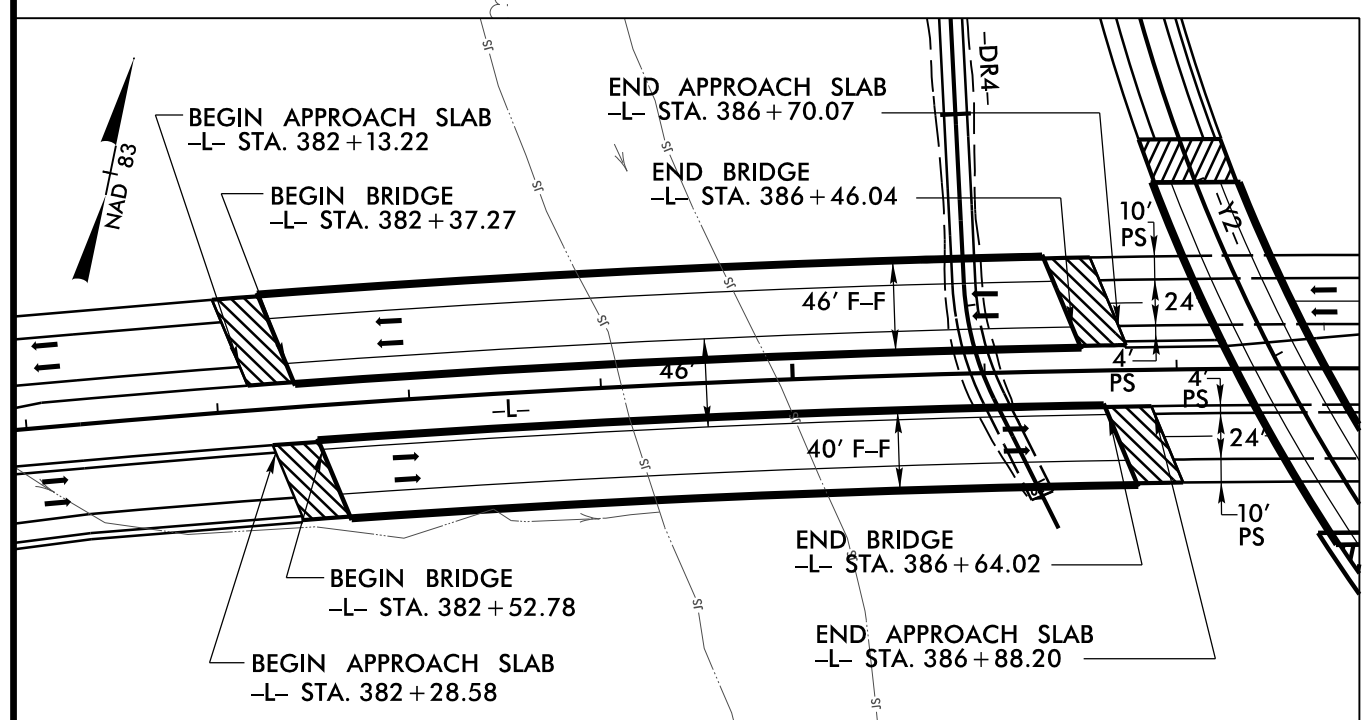
-L-
 PI Sta 387+18.94
 $\Delta = 8^{\circ} 50' 30.4''$ (RT)
 $D = 0^{\circ} 45' 00.0''$
 $L = 1,178.90'$
 $T = 590.62'$
 $R = 7,639.44'$
 $SE = .03$
 $RO = 150'$

-DR4-
 PI Sta 12+4.82
 $\Delta = 20^{\circ} 20' 22.3''$ (LT)
 $D = 6^{\circ} 05' 43.1''$
 $L = 333.69'$
 $T = 168.62'$
 $R = 940.00'$

PI Sta 16+20.18
 $\Delta = 23^{\circ} 36' 51.2''$ (LT)
 $D = 38^{\circ} 11' 49.9''$
 $L = 61.82'$
 $T = 31.36'$
 $R = 150.00'$

-Y2-
 PI Sta 31+27.15
 $\Delta = 96^{\circ} 06' 18.7''$ (LT)
 $D = 6^{\circ} 00' 00.0''$
 $L = 1,601.75'$
 $T = 1,062.52'$
 $R = 954.93''$
 $SE = .06$
 $RO = 150'$

EQUATION:
 -L- STA. 382+00.7 BK
 END TIP PROJECT R-2707B
 -L- STA. 382+00.00 AH
 BEGIN TIP PROJECT R-2707C



FOR DITCH DETAILS SEE SHEETS 2D-1 AND 2D-2
 FOR -L- PROFILE SEE SHEET 43
 FOR -Y2- PROFILE SEE SHEET 56
 FOR WALL PLANS SEE FOR STRUCTURE PLANS SEE

SKETCH SHOWING BRIDGE RELATIVE TO PROPOSED PAVEMENT