

**STATE OF NORTH CAROLINA
DEPARTMENT OF TRANSPORTATION**

**PAVEMENT MARKING PLAN
ALAMANCE COUNTY**

**LOCATION: NC 119 RELOCATION FROM I-40/85 TO NORTH OF
SR 1921 (MEBANE ROGERS RD/STAGE COACH RD)**

T.I.P.: U-3109A

CONTRACT: C203844

GENERAL NOTES

THE FOLLOWING GENERAL NOTES APPLY AT ALL TIMES FOR THE DURATION OF THE CONSTRUCTION PROJECT, EXCEPT WHEN OTHERWISE NOTED IN THE PLAN, OR DIRECTED BY THE ENGINEER.

- A) INSTALL PAVEMENT MARKINGS AND PAVEMENT MARKERS ON THE FINAL SURFACE AS FOLLOWS:

ROAD NAME/TYPE	MARKING	MARKER
I-40/I-85	THERMOPLASTIC	SNOWPLOWABLE
NC 119	THERMOPLASTIC	RAISED
CONCRETE BRIDGE DECK	COLD APPLIED PLASTIC (TYPE II OR III)	RAISED
ALL OTHER	THERMOPLASTIC	MATCH EXISTING

- B) TIE PROPOSED PAVEMENT MARKING LINES TO EXISTING PAVEMENT MARKING LINES.
 C) REMOVE/REPLACE ANY CONFLICTING/DAMAGED PAVEMENT MARKINGS AND MARKERS.
 D) PASSING ZONES WILL BE DETERMINED IN THE FIELD AND MUST BE APPROVED BY THE ENGINEER.
 E) STOP BAR LOCATION AT NON-SIGNALIZED INTERSECTIONS MAY BE ADJUSTED AS DIRECTED BY THE ENGINEER.
 F) REMOVE ALL RESIDUE AND SURFACE LAITANCE BY ACCEPTABLE METHODS ON CONCRETE BRIDGE DECKS PRIOR TO PLACING POLYUREA PAVEMENT MARKING MATERIAL.
 G) UNLESS OTHERWISE SPECIFIED, HEATED-IN-PLACE THERMOPLASTIC MAY BE USED IN LIEU OF EXTRUDED THERMOPLASTIC FOR STOP BARS, SYMBOLS, CHARACTERS AND DIAGONALS. IF HEATED-IN-PLACE IS USED, IT SHALL BE PAID FOR USING THE EXTRUDED THERMOPLASTIC PAY ITEM.
 H) TYPE III COLD APPLIED PLASTIC MAY BE USED IN LIEU OF TYPE II COLD APPLIED PLASTIC. IF TYPE III COLD APPLIED PLASTIC IS USED, IT SHALL BE PAID FOR USING THE TYPE II COLD APPLIED PLASTIC PAY ITEM.

INDEX

SHEET NO.	DESCRIPTION
PMP-1	PAVEMENT MARKING PLAN TITLE SHEET
PMP-1A	PAVEMENT MARKING SCHEDULE
PMP-1B	CROSSWALK GUIDANCE DETAIL
PMP-1C THRU PMP-1D	REVISED ROADWAY STANDARD DRAWINGS
PMP-2 THRU PMP-19	PAVEMENT MARKING DETAIL SHEETS

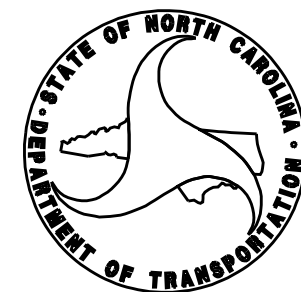
ROADWAY STANDARD DRAWING

THE FOLLOWING ROADWAY STANDARDS AS APPEAR IN "ROADWAY STANDARD DRAWINGS" - PROJECT SERVICES UNIT - N.C. DEPARTMENT OF TRANSPORTATION - RALEIGH, N.C., DATED JULY 2012 ARE APPLICABLE TO THIS PROJECT AND BY REFERENCE HEREBY ARE CONSIDERED A PART OF THESE PLANS:

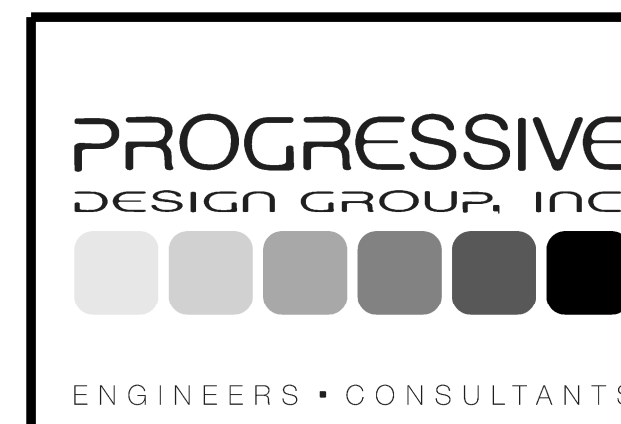
STD. NO.	TITLE
1205.01	PAVEMENT MARKINGS - LINE TYPES AND OFFSETS
1205.02	PAVEMENT MARKINGS - 2 LANE AND MULTILANE ROADWAYS
1205.03	PAVEMENT MARKINGS - EXIT AND ENTRANCE RAMP
1205.04	PAVEMENT MARKINGS - INTERSECTIONS
1205.05	PAVEMENT MARKINGS - TURN LANES
1205.06	PAVEMENT MARKINGS - LANE DROPS
1205.07	PAVEMENT MARKINGS - PEDESTRIAN CROSSWALKS
1205.08	PAVEMENT MARKINGS - SYMBOLS AND WORD MESSAGES
1205.09	PAVEMENT MARKINGS - PAINTED ISLANDS
1205.12	PAVEMENT MARKINGS - BRIDGES
1205.13	PAVEMENT MARKINGS - LANE REDUCTIONS
1250.01	RAISED PAVEMENT MARKERS - INSTALLATION SPACING
1251.01	RAISED PAVEMENT MARKERS - TEMPORARY AND PERMANENT
1253.01	RAISED PAVEMENT MARKERS - SNOWPLOWABLE
1261.01	GUARDRAIL AND BARRIER DELINEATORS - INSTALLATION SPACING
1261.02	GUARDRAIL AND BARRIER DELINEATORS - TYPES AND MOUNTING
1262.01	GUARDRAIL END DELINEATION
1264.01	OBJECT MARKERS - TYPES
1264.02	OBJECT MARKERS - INSTALLATION

PLAN REVIEWED BY: N.C.D.O.T. SIGNING AND DELINEATION UNIT

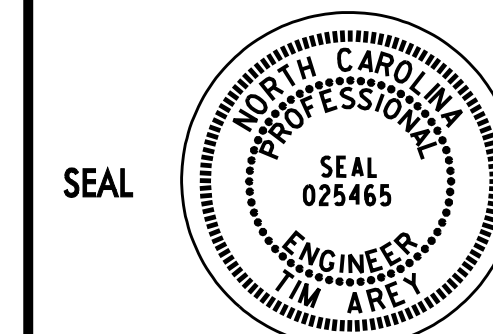
Renee Roach, PE, CPM SIGNING & DELINEATION REGIONAL ENGINEER
Stacey Johns SIGNING & DELINEATION PROJECT DESIGN ENGINEER



DOCUMENT NOT CONSIDERED FINAL
UNLESS ALL SIGNATURES COMPLETED



APPROVED: Jim Arey DATE: 2/28/2017

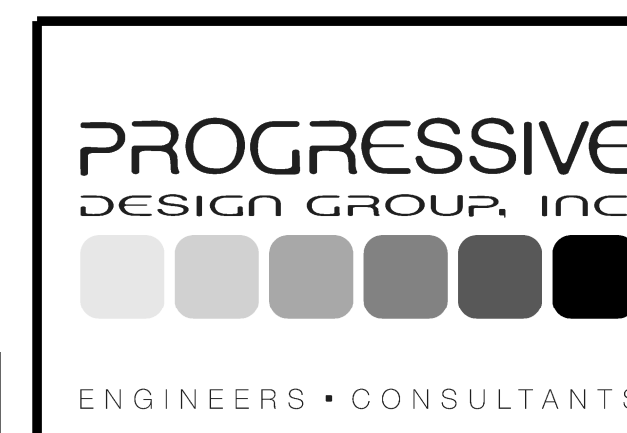


PAVEMENT MARKING PLAN

PAVEMENT MARKING SCHEDULE

Symbol	Description	Material
CA	WHITE EDGELINE (4")	Cold Applied Plastic
CB	YELLOW EDGELINE (4")	Cold Applied Plastic
CC	10 FT. WHITE SKIP (4")	Cold Applied Plastic
CD	3 FT. - 9 FT./SP WHITE MINISKIP (4")	Cold Applied Plastic
CN	WHITE GORELINE (8")	Cold Applied Plastic
DA	LEFT TURN ARROW	Cold Applied Plastic
DC	STRAIGHT ARROW	Cold Applied Plastic
DD	COMBO. LEFT/STRAIGHT ARROW	Cold Applied Plastic
T2	WHITE STOPBAR (24", 120 MIL)	Thermo
T3	WHITE CROSSWALK LINE (24", 120 MIL)	Thermo
T6	WHITE EDGELINE (6", 90 MIL)	Thermo
T7	YELLOW EDGELINE (6", 90 MIL)	Thermo
T8	2 FT. - 6 FT./SP WHITE MINISKIP (4", 120 MIL)	Thermo
T13	3 FT. - 9 FT./SP WHITE MINISKIP (8", 120 MIL)	Thermo
TA	WHITE EDGELINE (4", 90 MIL)	Thermo
TB	YELLOW EDGELINE (4", 90 MIL)	Thermo
TC	10 FT. WHITE SKIP (4", 120 MIL)	Thermo
TD	3 FT. - 9 FT./SP WHITE MINISKIP (4", 120 MIL)	Thermo
TE	WHITE SOLID LANE LINE (4", 120 MIL)	Thermo
TI	YELLOW DOUBLE CENTER (4", 120 MIL)	Thermo
TJ	10 FT. WHITE SKIP (6", 120 MIL)	Thermo
TK	3 FT. - 9 FT./SP WHITE MINISKIP (6", 120 MIL)	Thermo
TN	WHITE GORELINE (8", 90 MIL)	Thermo
TQ	WHITE CROSSWALK LINE (8", 120 MIL)	Thermo
TR	WHITE SOLID LANE LINE (8", 120 MIL)	Thermo
TS	WHITE GORELINE (12", 90 MIL)	Thermo
TU	WHITE DIAGONAL (12", 90 MIL)	Thermo
TV	YELLOW DIAGONAL (12", 90 MIL)	Thermo
UA	LEFT TURN ARROW (90 MIL)	Thermo
UB	RIGHT TURN ARROW (90 MIL)	Thermo
UC	STRAIGHT ARROW (90 MIL)	Thermo
UD	COMBO. LEFT/STRAIGHT ARROW (90 MIL)	Thermo
UE	COMBO. RIGHT/STRAIGHT ARROW (90 MIL)	Thermo
UG	COMBO. LEFT/RIGHT/STRAIGHT ARROW (90 MIL)	Thermo
UI	ALPHANUMERIC CHAR. (120 MIL)	Thermo
UN	24" YIELD LINE TRIANGLE (90 MIL)	Thermo
UQ	RAMP ARROW SYMBOL (90 MIL)	Thermo
UT	U-TURN ARROW (90 MIL)	Thermo

DOCUMENT NOT CONSIDERED FINAL
UNLESS ALL SIGNATURES COMPLETED

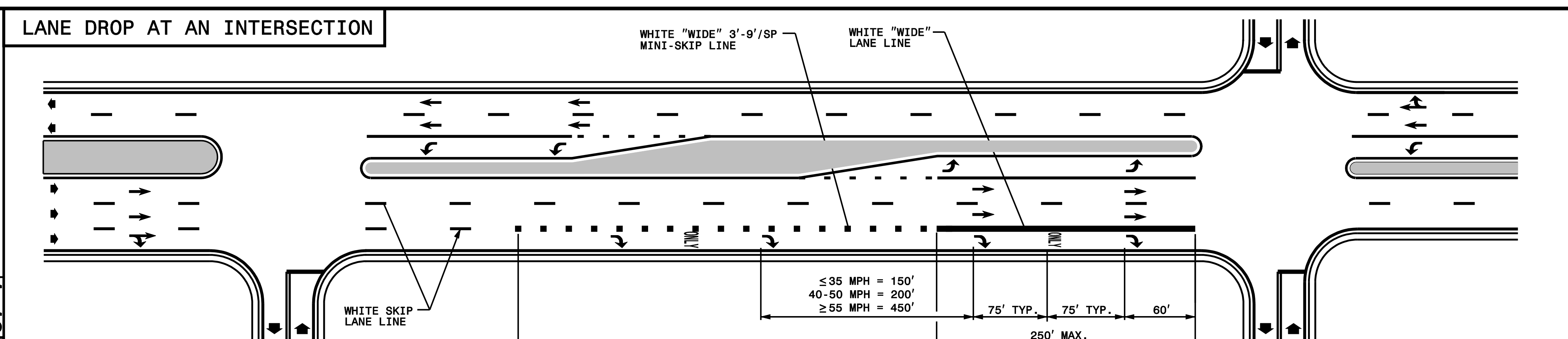


APPROVED: *Jim Arey* DATE: 2/28/2017

SEAL

PAVEMENT MARKING PLAN
PAVEMENT MARKING SCHEDULE

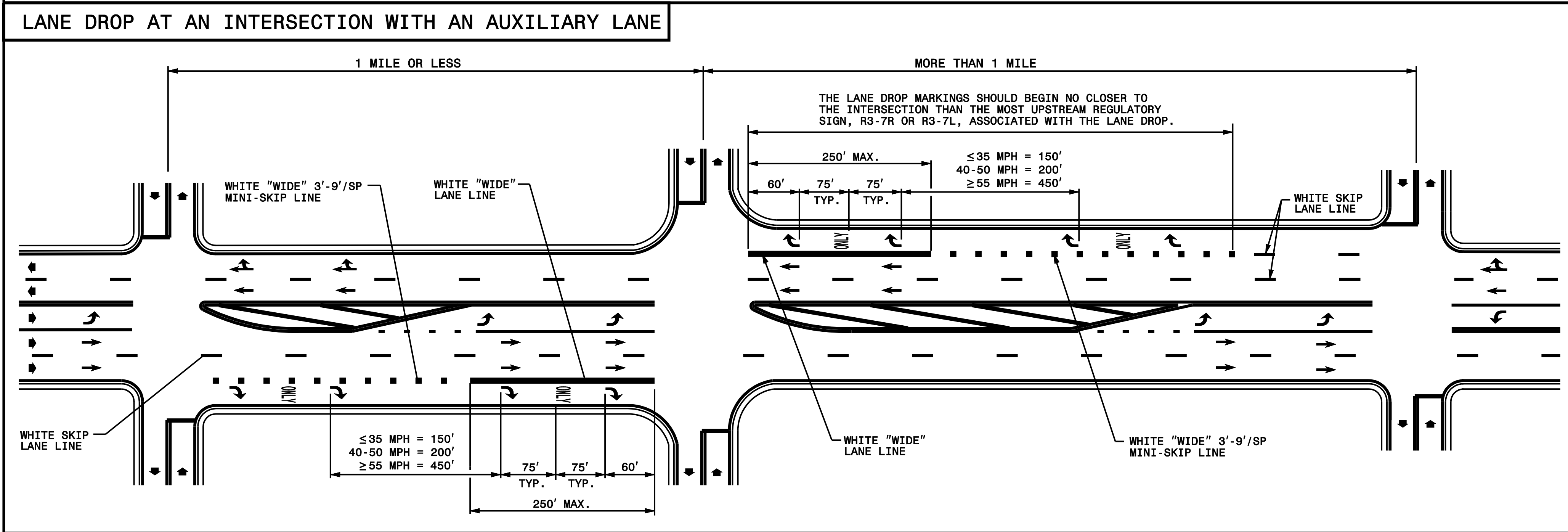
STATE OF NORTH CAROLINA
DEPT. OF TRANSPORTATION
DIVISION OF HIGHWAYS
RALEIGH, N.C.



1-12

STATE OF NORTH CAROLINA
DEPT. OF TRANSPORTATION
DIVISION OF HIGHWAYS
RALEIGH, N.C.

ENGLISH DETAIL DRAWING FOR
PAVEMENT MARKINGS
LANE DROPS



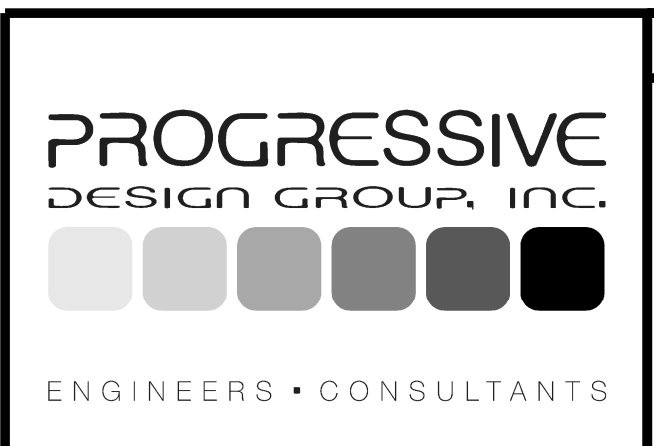
GENERAL NOTES:
1- USE THE GUIDANCE SHOWN ON THE ABOVE DETAILS IN CONJUNCTION WITH INTERSECTION GUIDANCE SHOWN ON ROADWAY STANDARD DRAWING 1205.04.
2- LANE LINES INDICATED AS "WIDE" SHALL BE AT LEAST TWICE THE WIDTH OF THE NORMAL LINE.

LEGEND	
W = WIDTH OF TRAVEL LANE	ONLY PAVEMENT MARKING SYMBOLS & CHARACTERS
➔ DIRECTION OF TRAFFIC FLOW	

SHEET 1 OF 3
1205D06

SHEET 1 OF 3
1205D06

DOCUMENT NOT CONSIDERED FINAL
UNLESS ALL SIGNATURES COMPLETED

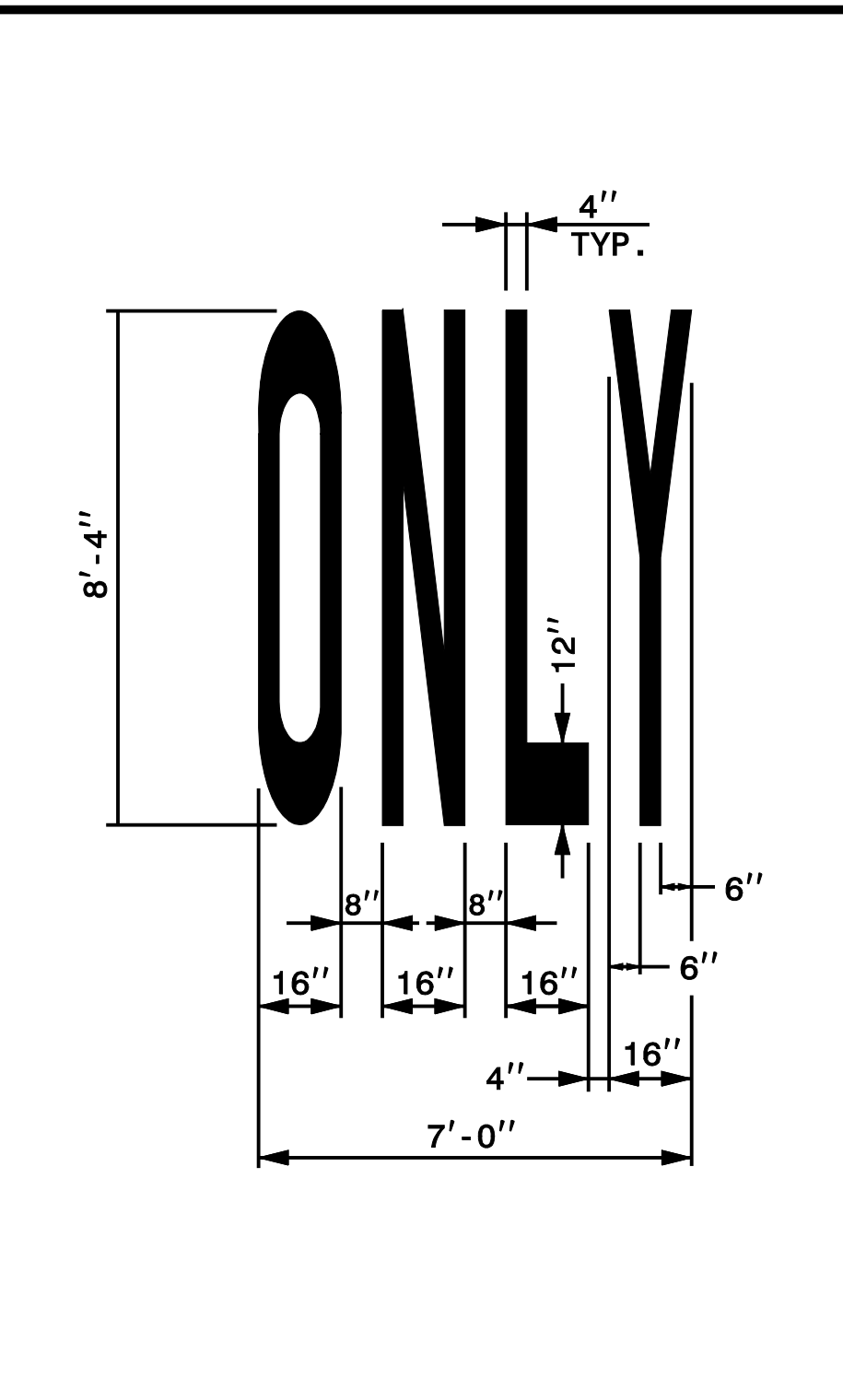
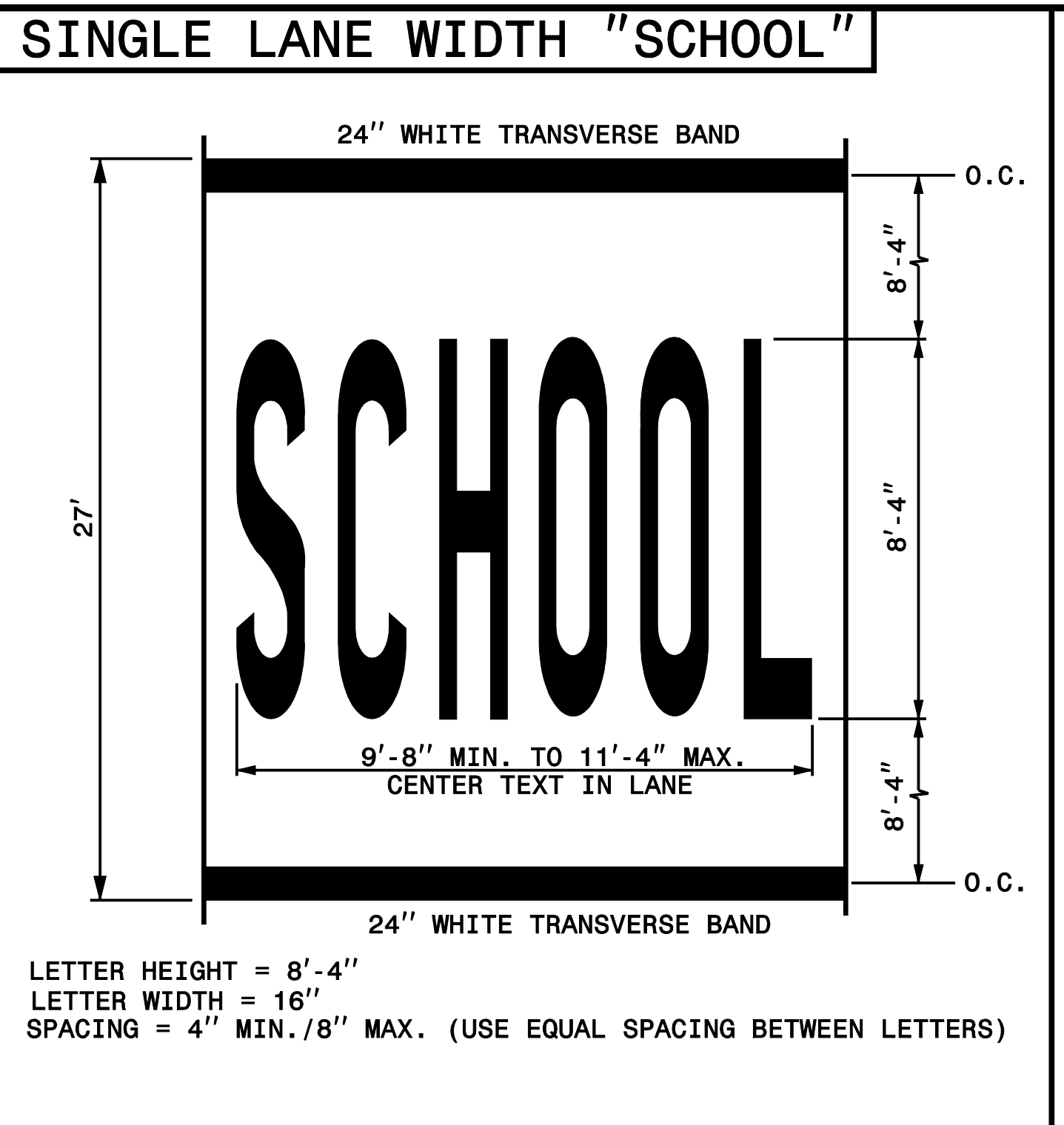
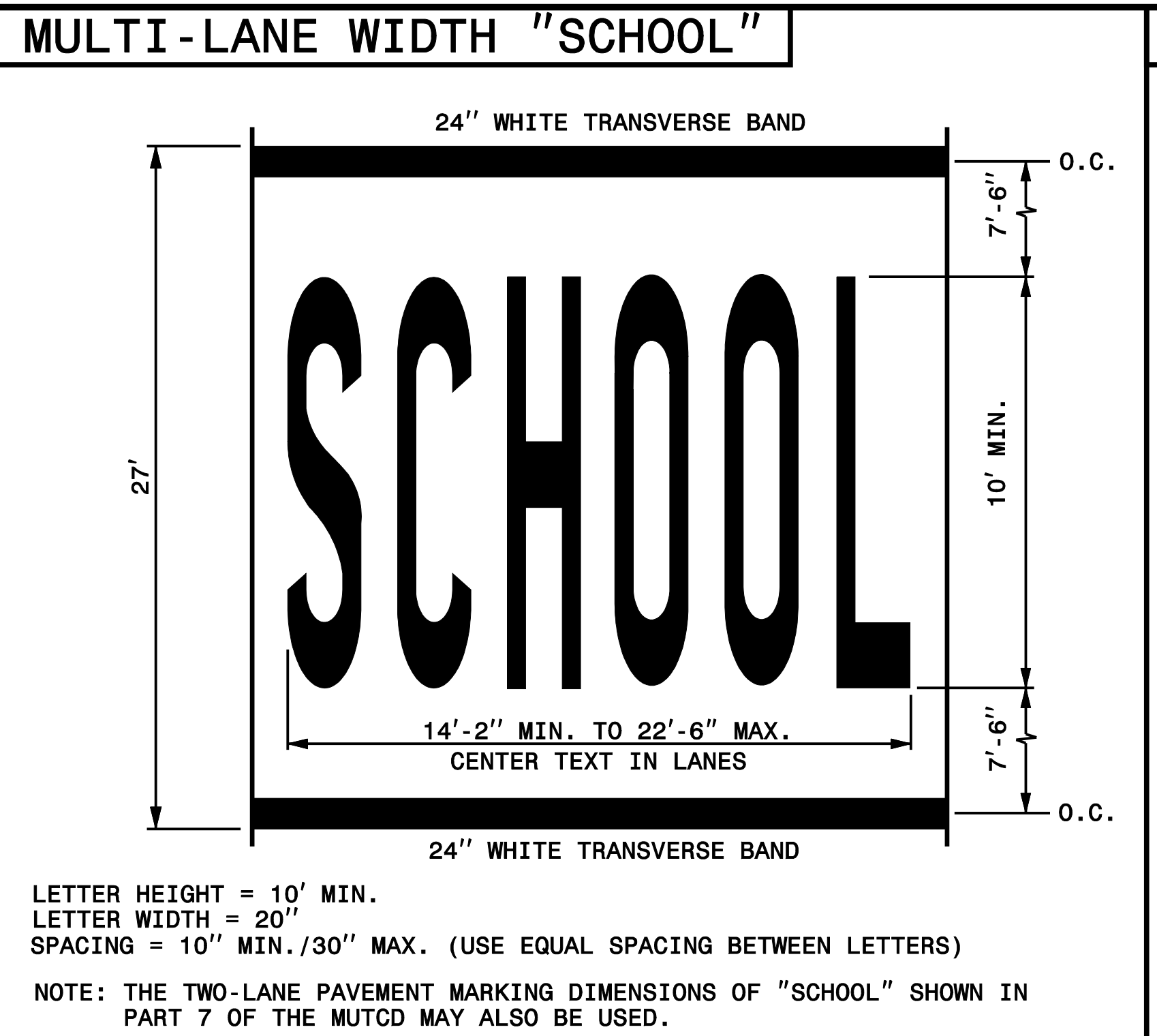


APPROVED: *Jim Arey* DATE: 2/28/2017

SEAL

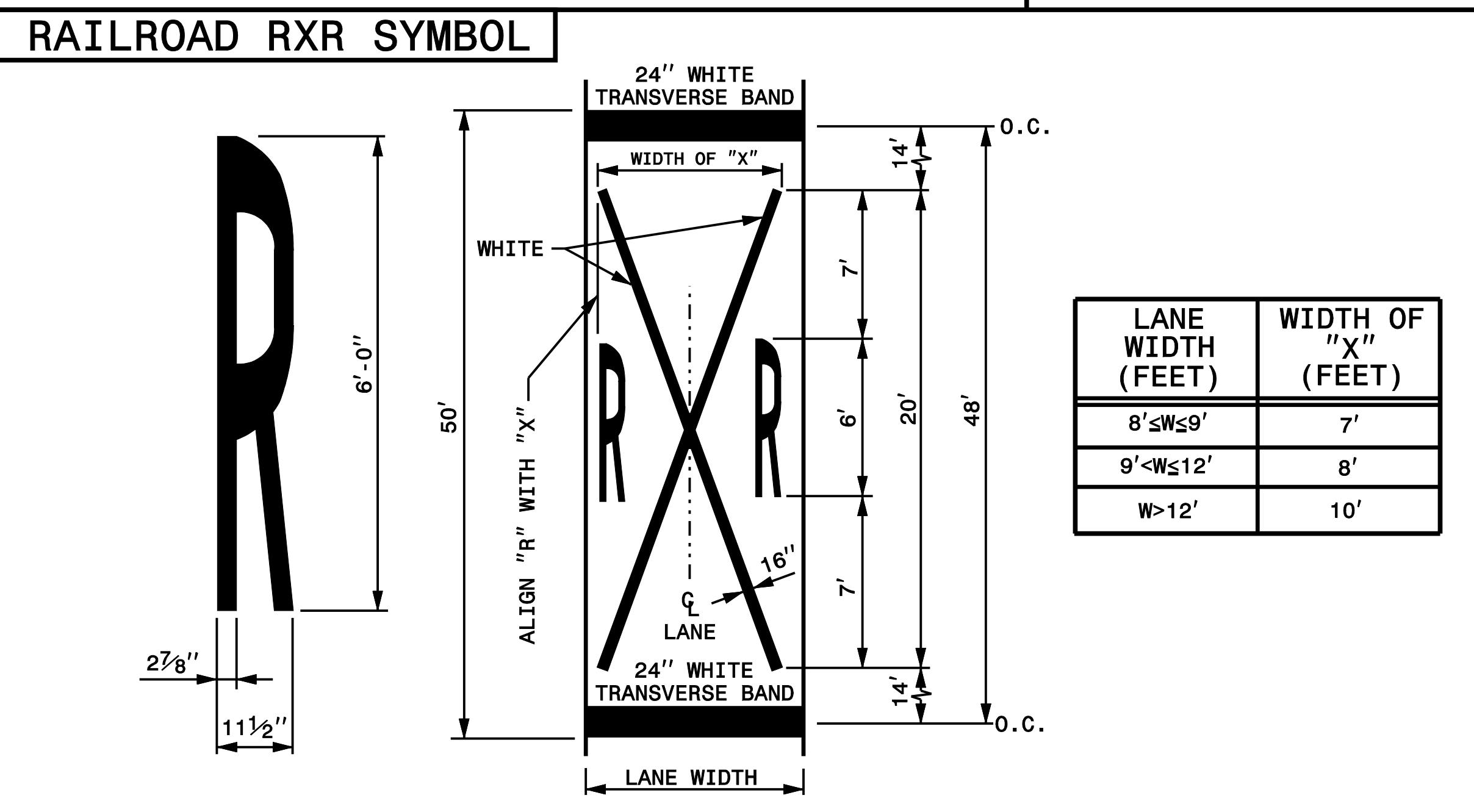
PAVEMENT MARKING PLAN
REVISED PAVEMENT MARKING
ROADWAY STANDARD DRAWING

STATE OF NORTH CAROLINA
DEPT. OF TRANSPORTATION
DIVISION OF HIGHWAYS
RALEIGH, N.C.



STATE OF NORTH CAROLINA
DEPT. OF TRANSPORTATION
DIVISION OF HIGHWAYS
RALEIGH, N.C.

ENGLISH DETAIL DRAWING FOR
PAVEMENT MARKINGS
SYMBOLS AND WORD MESSAGES



GENERAL NOTES:

- THE SCHOOL PAVEMENT MARKING CONSISTS OF SIX (6) CHARACTERS. THE TWO (2) 24" TRANSVERSE BANDS WILL BE PAID FOR UNDER A SEPARATE PAY ITEM. REFER TO ROADWAY STANDARD DRAWING 1205.10 FOR ADDITIONAL PAVEMENT MARKING GUIDANCE.
- PAVEMENT MARKING IN ADVANCE OF A HIGHWAY-RAIL CROSSING SHALL CONSIST OF TWO (2) CHARACTERS AND TWO (2) 16" LINES (FORMING AN X) WHICH ARE PAID FOR UNDER TWO SEPARATE PAY ITEMS. THE TWO (2) 24" TRANSVERSE BANDS WILL BE PAID FOR UNDER A SEPARATE PAY ITEM. REFER TO ROADWAY STANDARD DRAWING 1205.11 FOR ADDITIONAL PAVEMENT MARKING GUIDANCE.

ENGLISH DETAIL DRAWING FOR
PAVEMENT MARKINGS
SYMBOLS AND WORD MESSAGES

DOCUMENT NOT CONSIDERED FINAL
UNLESS ALL SIGNATURES COMPLETED

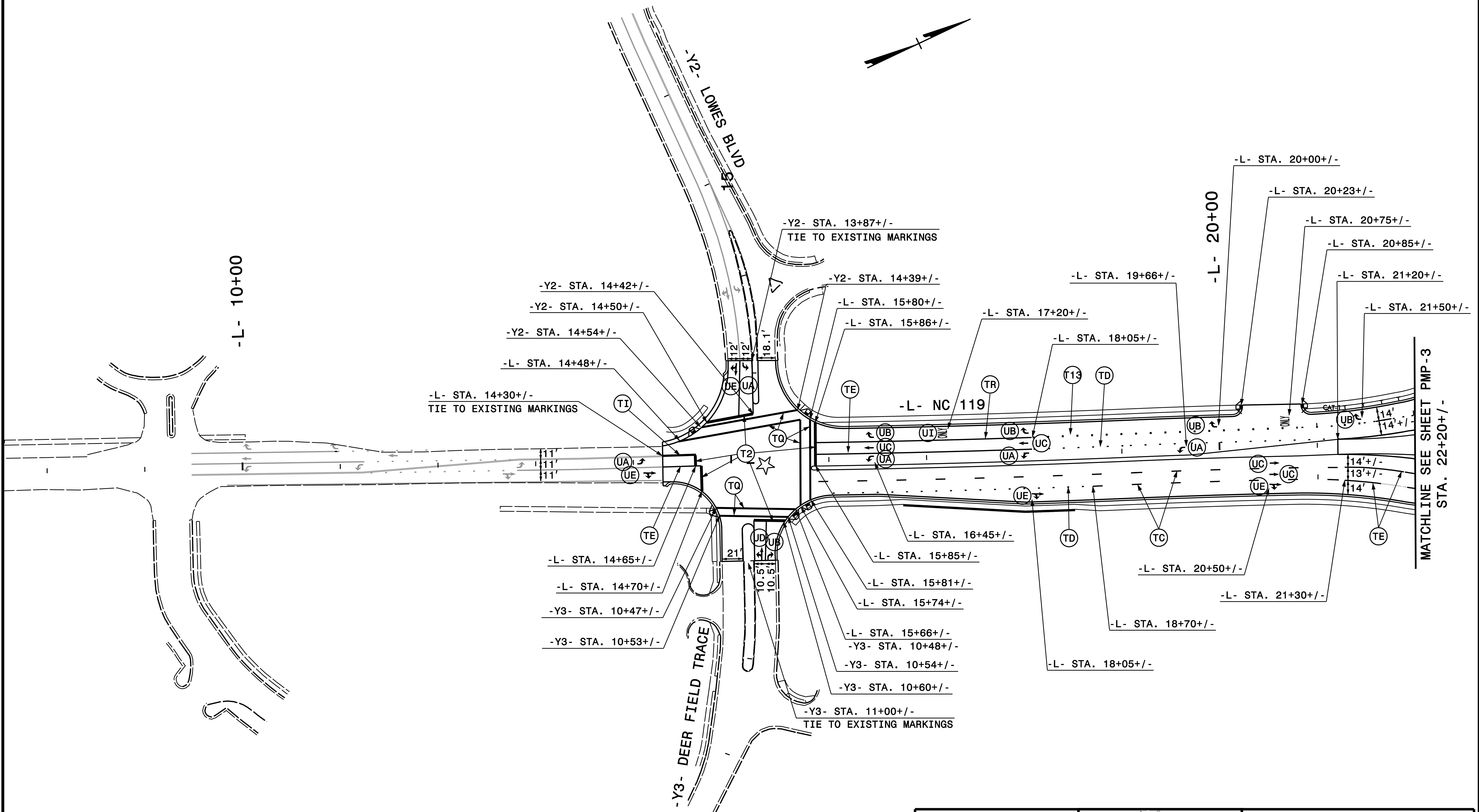
PROGRESSIVE
DESIGN GROUP, INC.

ENGINEERS • CONSULTANTS

APPROVED: *Jim Arey* DATE: 2/28/2017

SEAL

PAVEMENT MARKING PLAN
REVISED PAVEMENT MARKING
ROADWAY STANDARD DRAWING



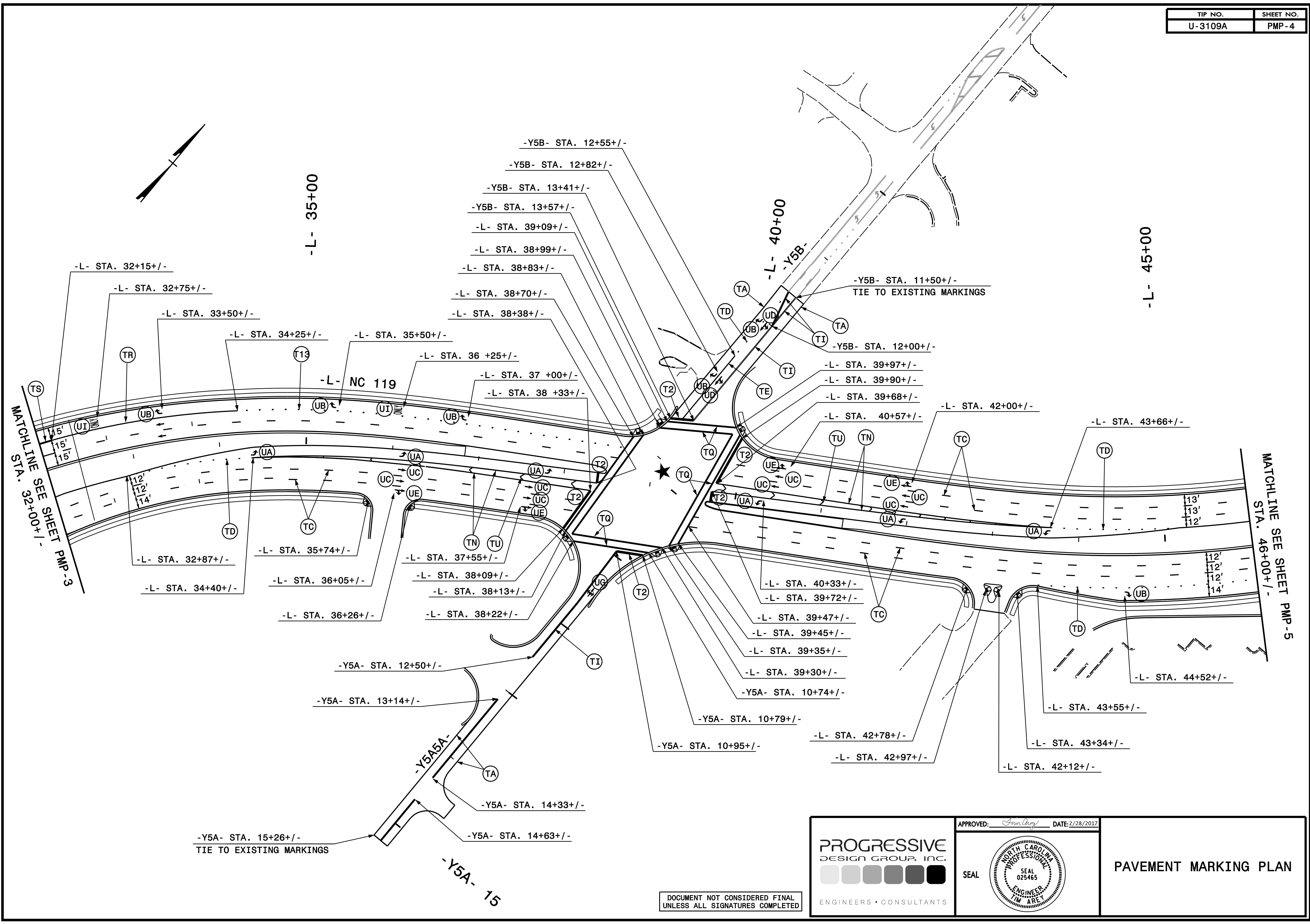
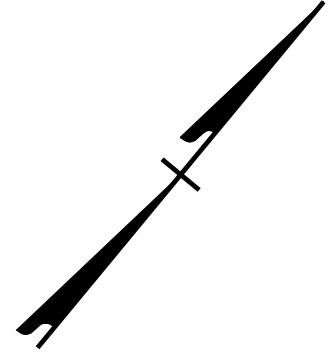
DOCUMENT NOT CONSIDERED FINAL
UNLESS ALL SIGNATURES COMPLETED

PROGRESSIVE
DESIGN GROUP, INC.
ENGINEERS • CONSULTANTS

APPROVED: *Jim Arey* DATE: 2/28/2017

SEAL

PAVEMENT MARKING PLAN



MATCHLINE SEE SHEET PMP-3
STA. 32+00+/-

MATCHLINE SEE SHEET PMP-5
STA. 46+00+/-

-Y5A- STA. 15+26+/-
TIE TO EXISTING MARKINGS

PROGRESSIVE
DESIGN GROUP, INC.
ENGINEERS • CONSULTANTS

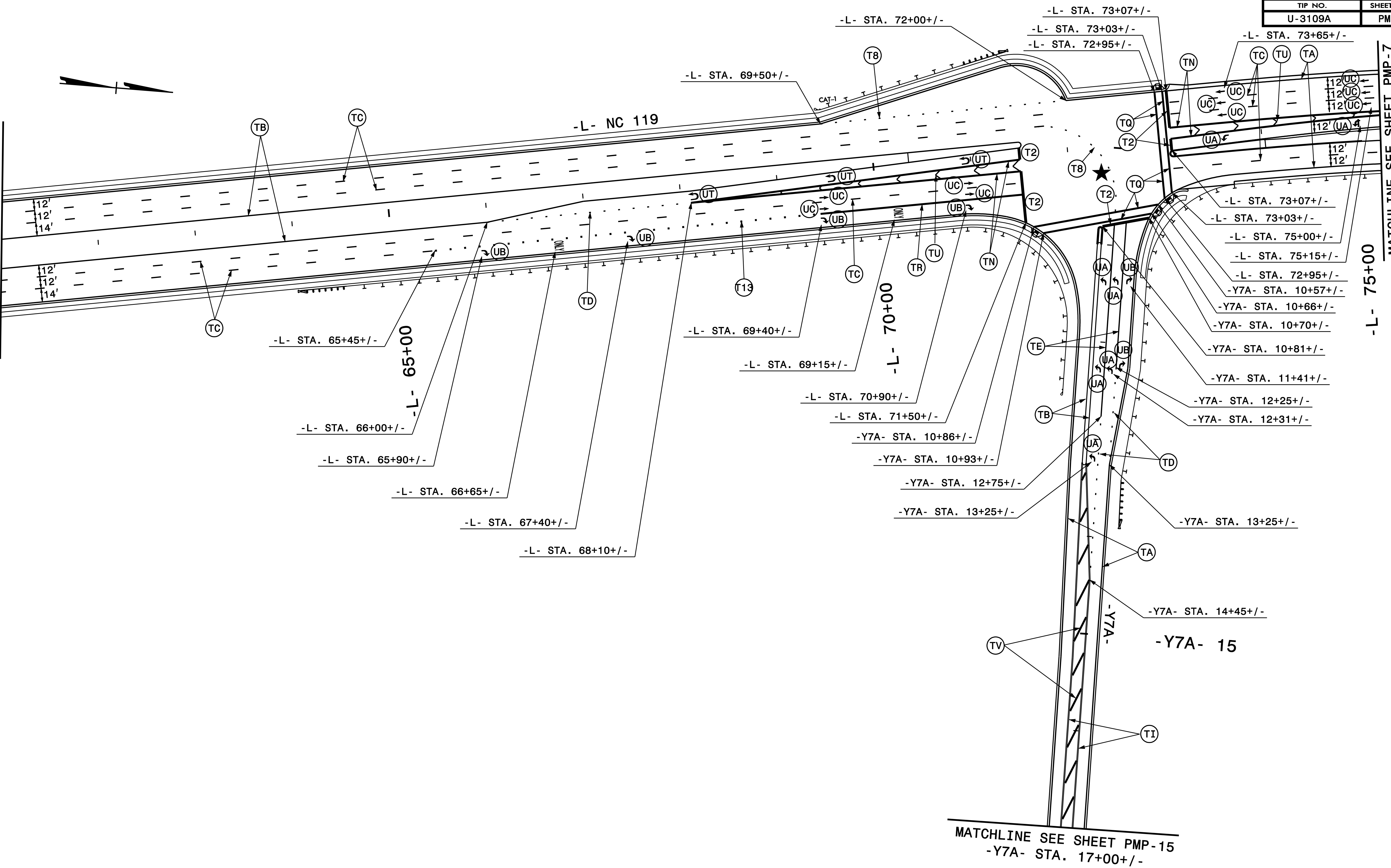
APPROVED: *[Signature]* DATE: 2/28/2017

SEAL

PAVEMENT MARKING PLAN

DOCUMENT NOT CONSIDERED FINAL
UNLESS ALL SIGNATURES COMPLETED

MATCHLINE SEE SHEET PMP-5
STA. 61+00 +/-



MATCHLINE SEE SHEET PMP-7
STA. 75+23 +/-

MATCHLINE SEE SHEET PMP-15
-Y7A- STA. 17+00 +/-

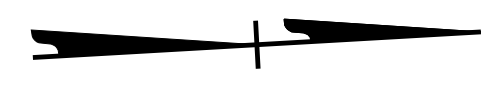
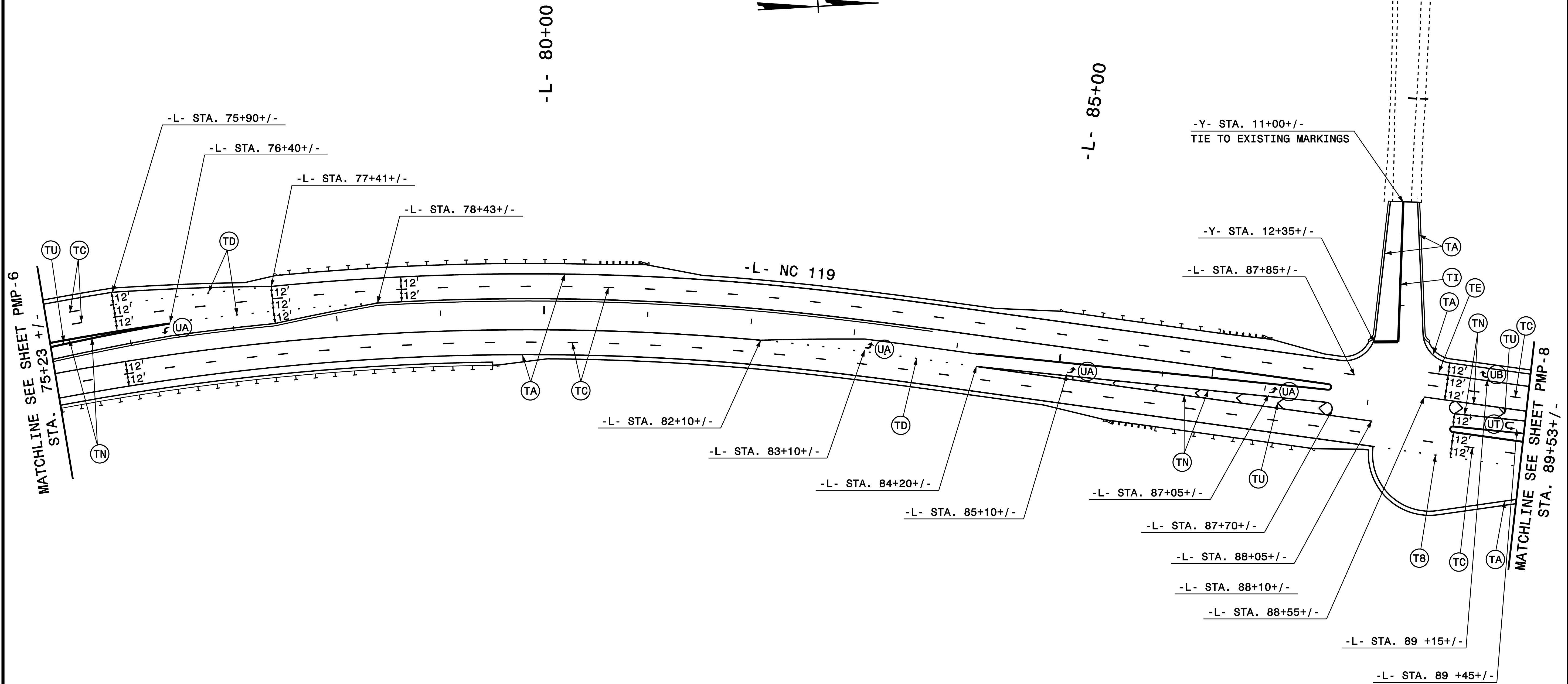
DOCUMENT NOT CONSIDERED FINAL
UNLESS ALL SIGNATURES COMPLETED

PROGRESSIVE
DESIGN GROUP, INC.
ENGINEERS • CONSULTANTS

APPROVED: *Jim Arey* DATE: 2/28/2017

SEAL

PAVEMENT MARKING PLAN



MATCHLINE SEE SHEET PMP-6
STA. 75+23 +/-

MATCHLINE SEE SHEET PMP-8
STA. 89+53 +/-

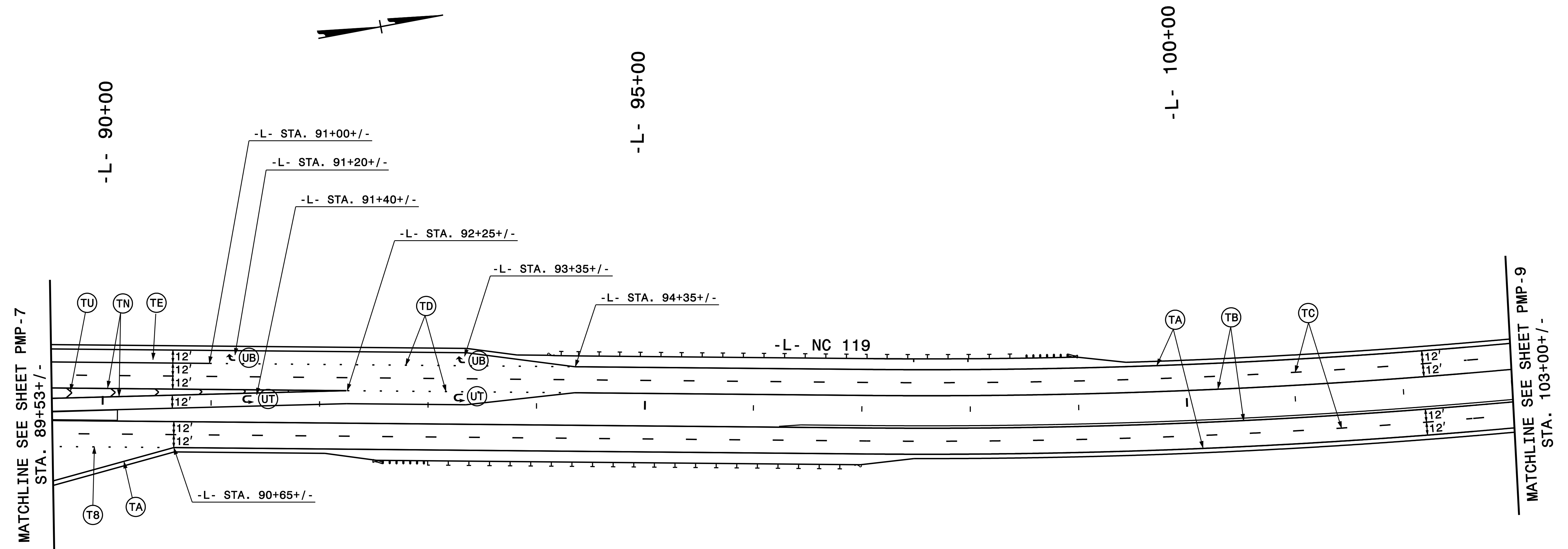
DOCUMENT NOT CONSIDERED FINAL
UNLESS ALL SIGNATURES COMPLETED

PROGRESSIVE
DESIGN GROUP, INC.
ENGINEERS • CONSULTANTS

APPROVED: *Jim Arey* DATE: 2/28/2017

SEAL

PAVEMENT MARKING PLAN



MATCHLINE SEE SHEET PMP-7
STA. 89+53+/-

MATCHLINE SEE SHEET PMP-9
STA. 103+00+/-

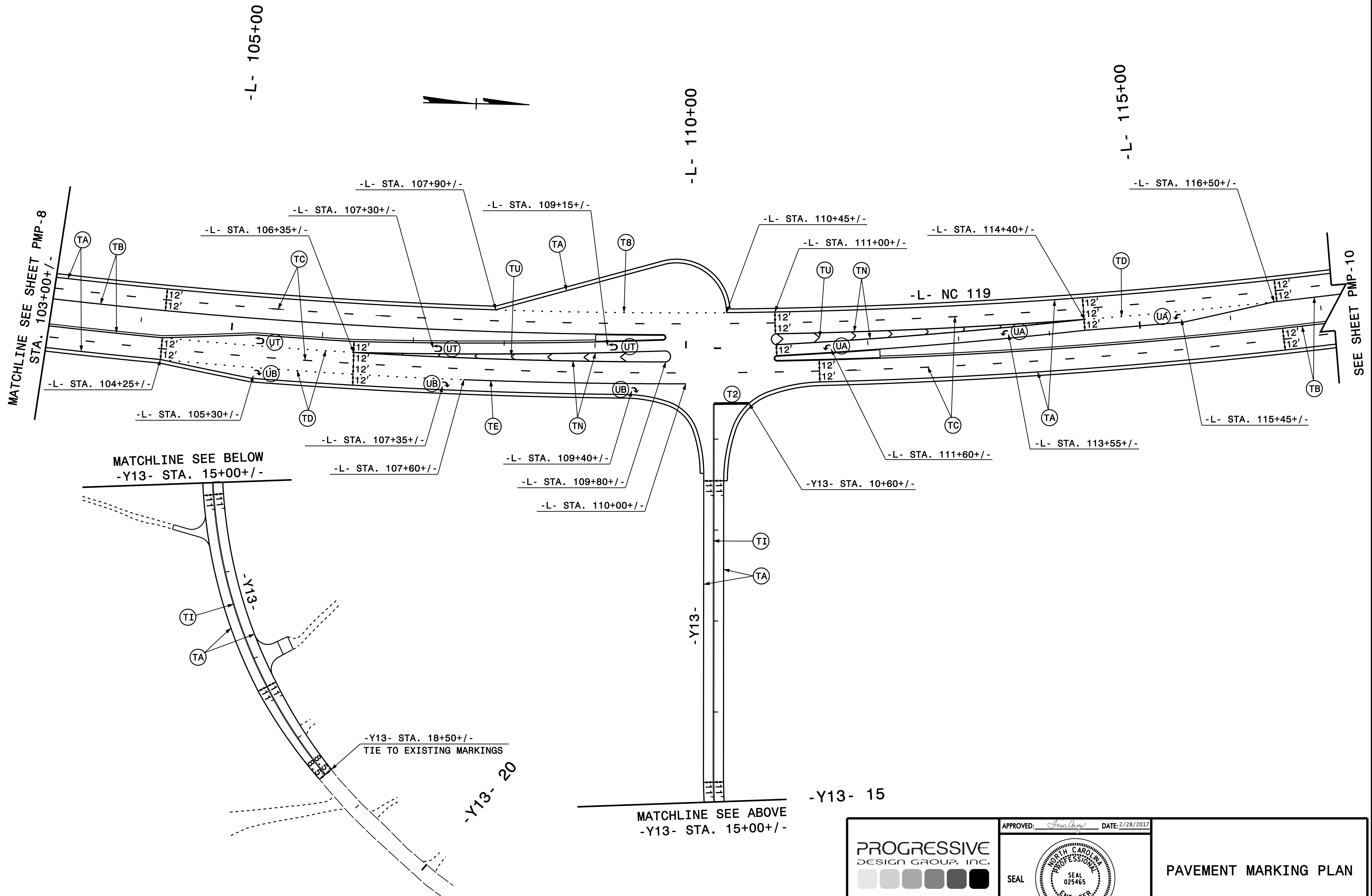
DOCUMENT NOT CONSIDERED FINAL
UNLESS ALL SIGNATURES COMPLETED

PROGRESSIVE
DESIGN GROUP, INC.
ENGINEERS • CONSULTANTS

APPROVED: *Jim Arey* DATE: 2/28/2017

SEAL

PAVEMENT MARKING PLAN



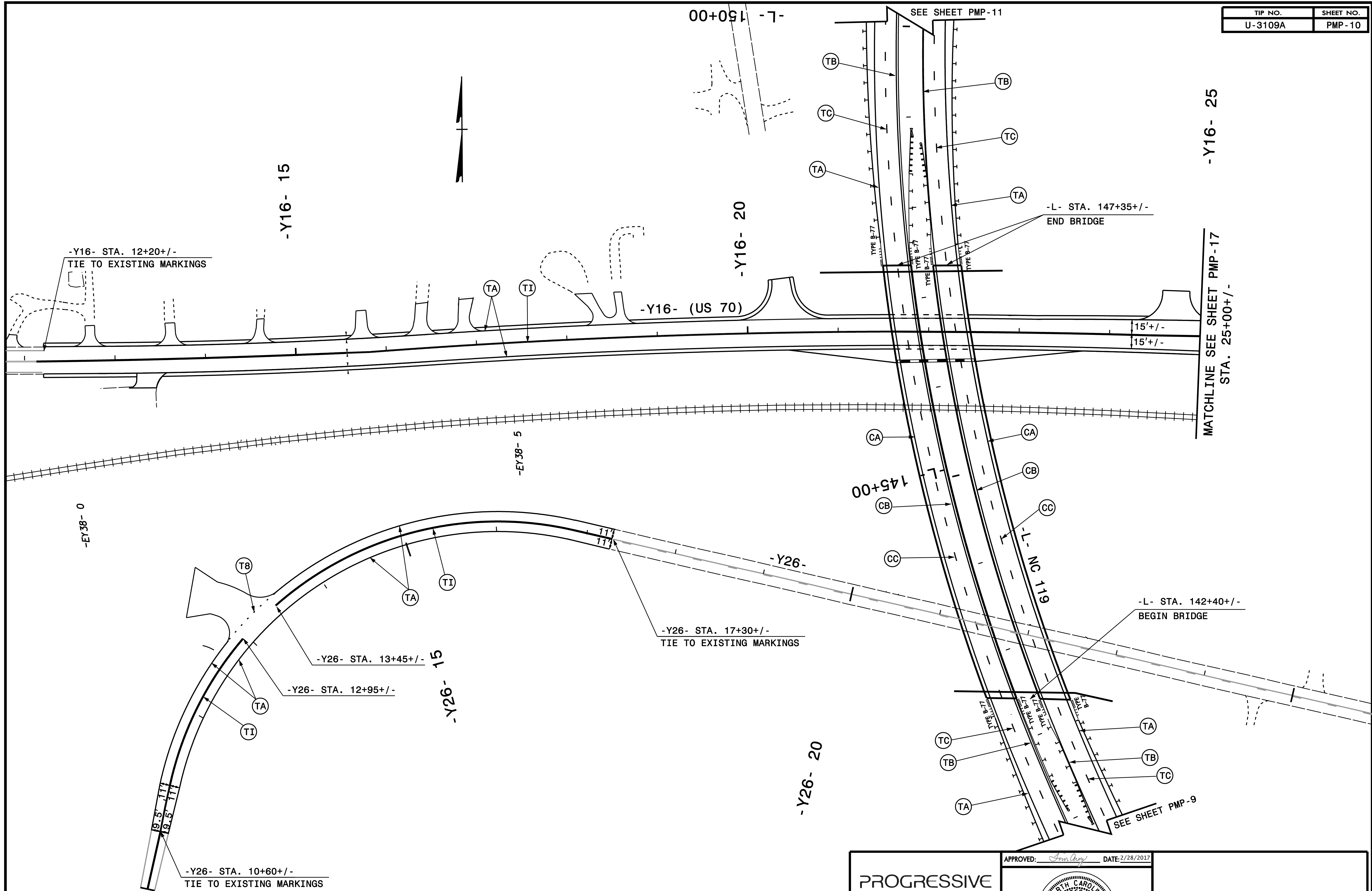
DOCUMENT NOT CONSIDERED FINAL
UNLESS ALL SIGNATURES COMPLETED

PROGRESSIVE
DESIGN GROUP, INC.
ENGINEERS • CONSULTANTS

APPROVED: *Jim Arey* DATE: 2/28/2017

SEAL

PAVEMENT MARKING PLAN



DOCUMENT NOT CONSIDERED FINAL
UNLESS ALL SIGNATURES COMPLETED

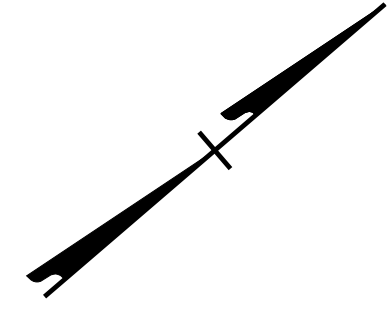
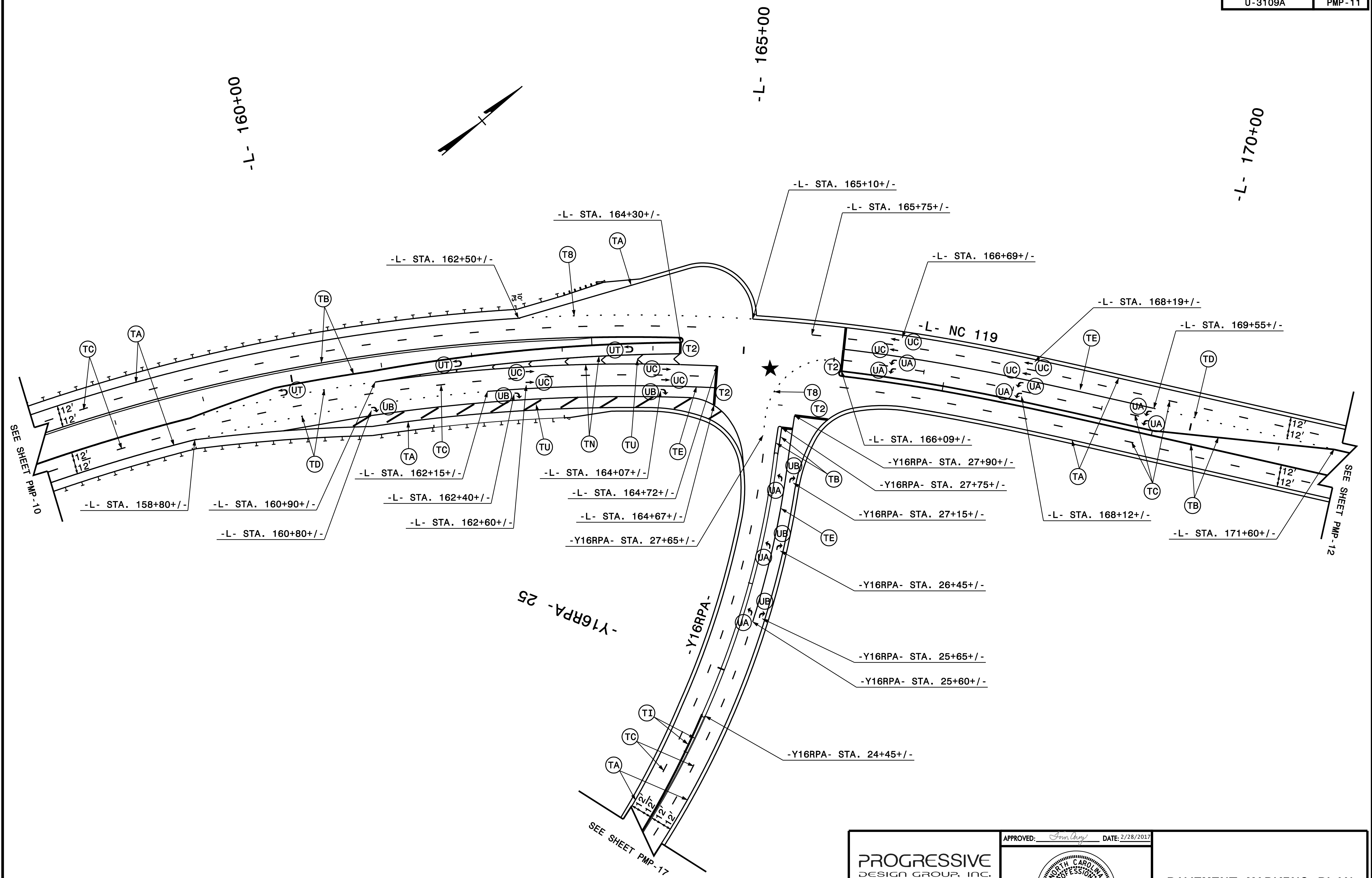
PROGRESSIVE
DESIGN GROUP, INC.

ENGINEERS • CONSULTANTS

APPROVED: *[Signature]* DATE: 2/28/2017

SEAL

PAVEMENT MARKING PLAN



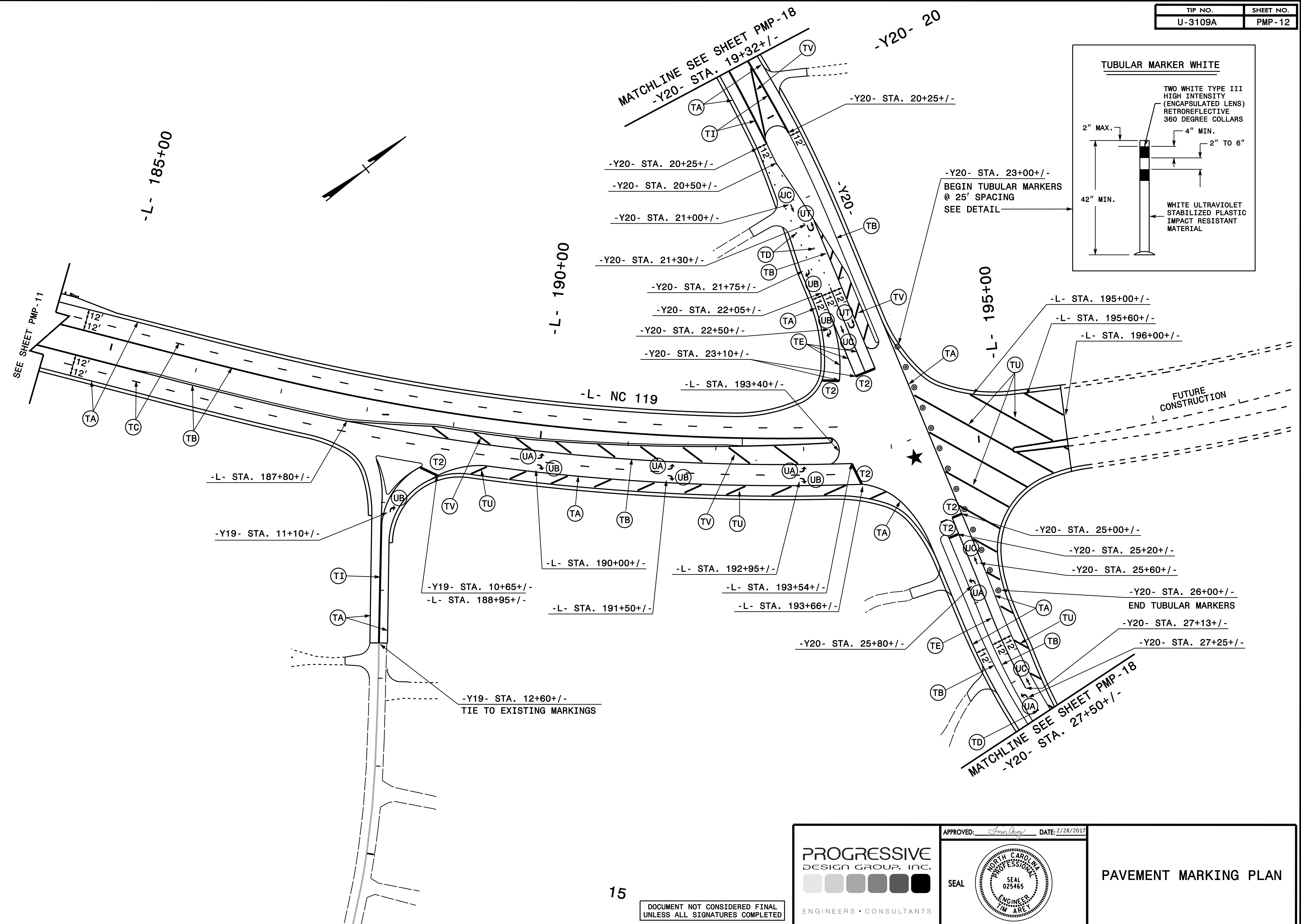
DOCUMENT NOT CONSIDERED FINAL
UNLESS ALL SIGNATURES COMPLETED

PROGRESSIVE
DESIGN GROUP, INC.
ENGINEERS • CONSULTANTS

APPROVED: *Jim Arey* DATE: 2/28/2017

SEAL

PAVEMENT MARKING PLAN



DOCUMENT NOT CONSIDERED FINAL
UNLESS ALL SIGNATURES COMPLETED

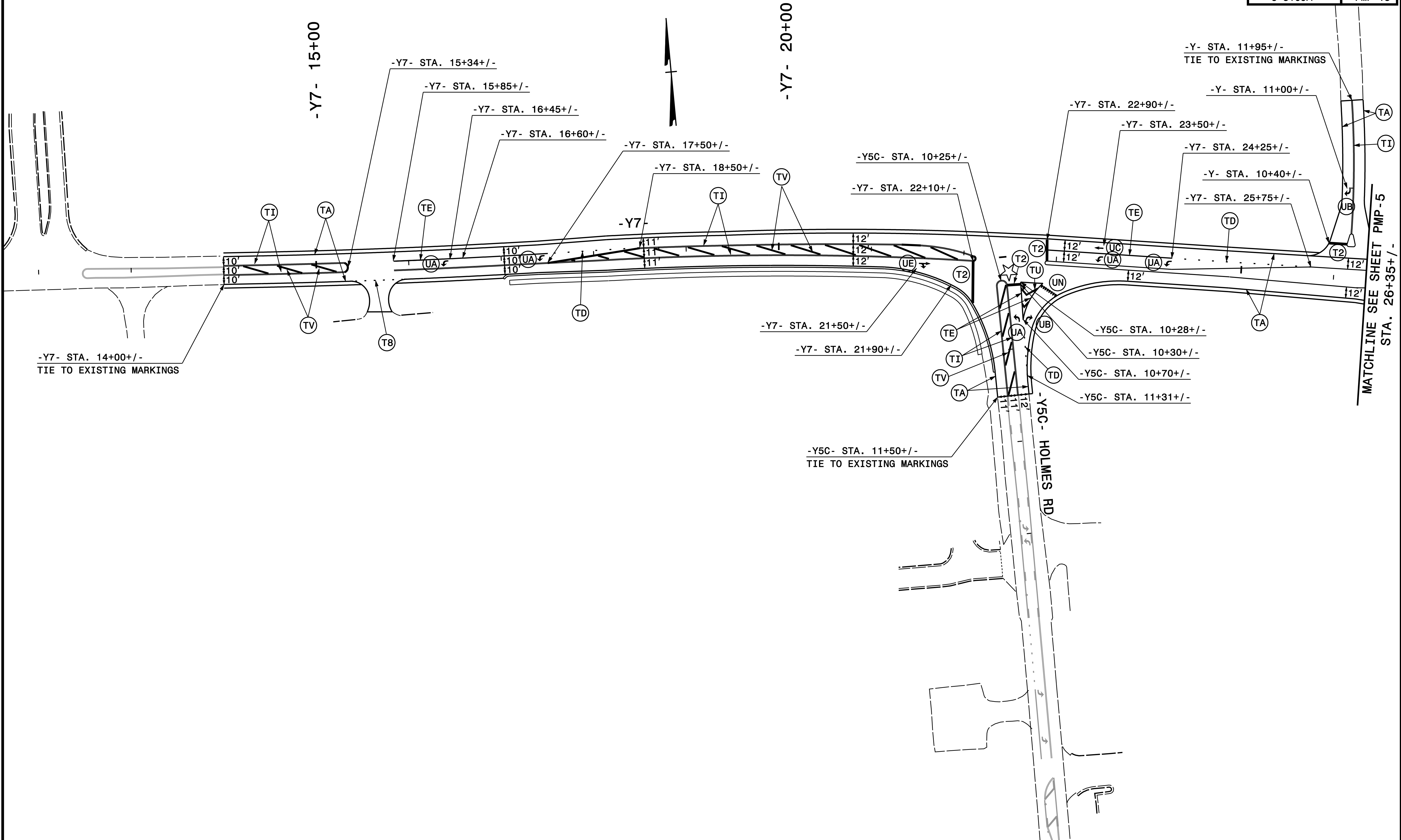
PROGRESSIVE
DESIGN GROUP, INC.

ENGINEERS • CONSULTANTS

APPROVED: *Jan Arvey* DATE: 2/28/2017

SEAL

PAVEMENT MARKING PLAN



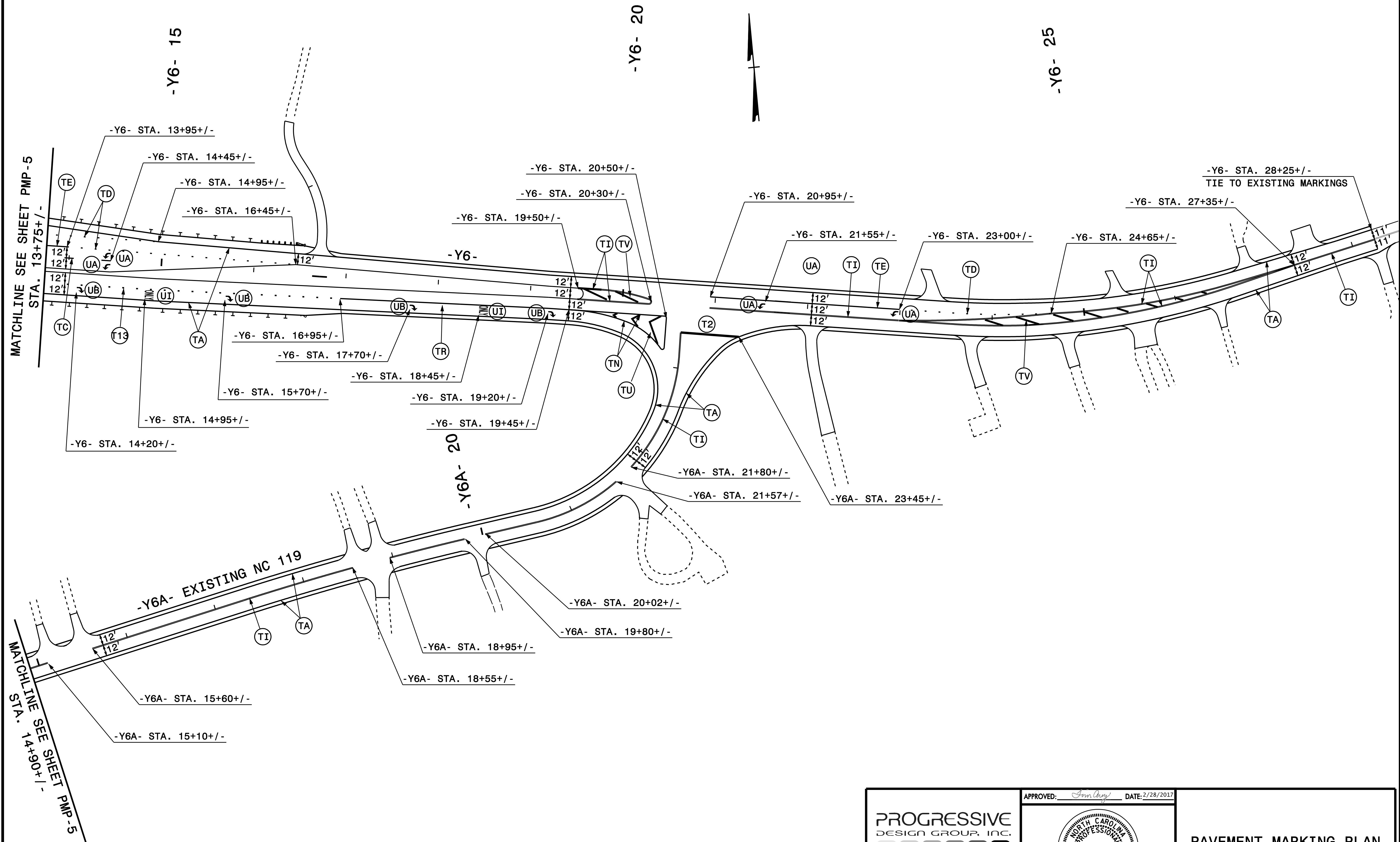
DOCUMENT NOT CONSIDERED FINAL
UNLESS ALL SIGNATURES COMPLETED

PROGRESSIVE
DESIGN GROUP, INC.
ENGINEERS • CONSULTANTS

APPROVED: *Sanley* DATE: 2/28/2017

SEAL

PAVEMENT MARKING PLAN



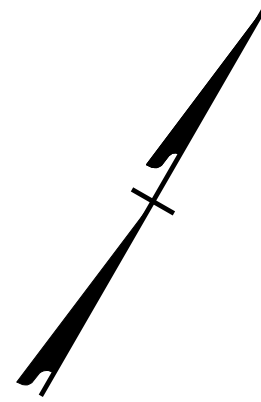
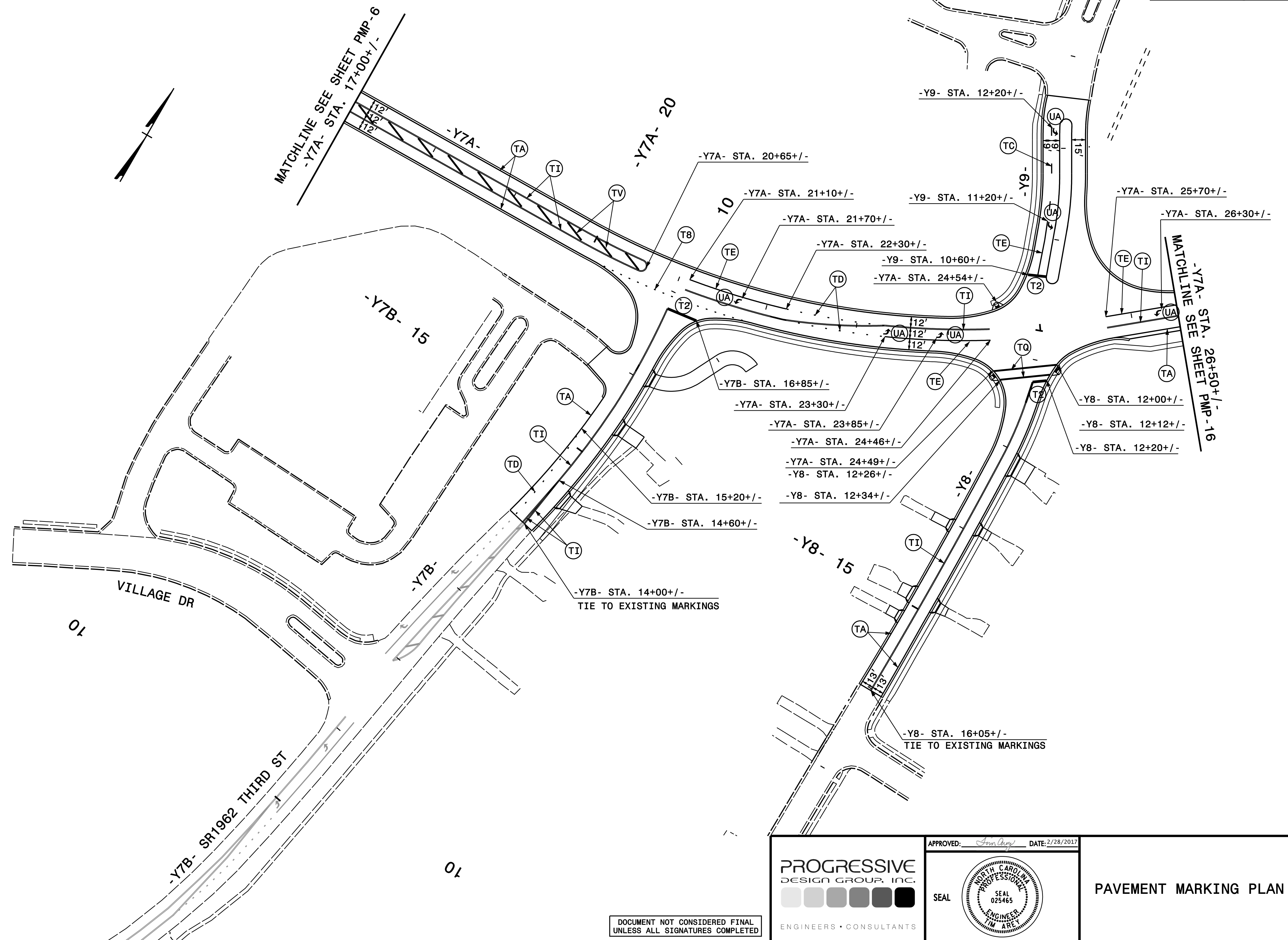
DOCUMENT NOT CONSIDERED FINAL
UNLESS ALL SIGNATURES COMPLETED

PROGRESSIVE
DESIGN GROUP, INC.
ENGINEERS • CONSULTANTS

APPROVED: *Jim Arey* DATE: 2/28/2017

SEAL

PAVEMENT MARKING PLAN



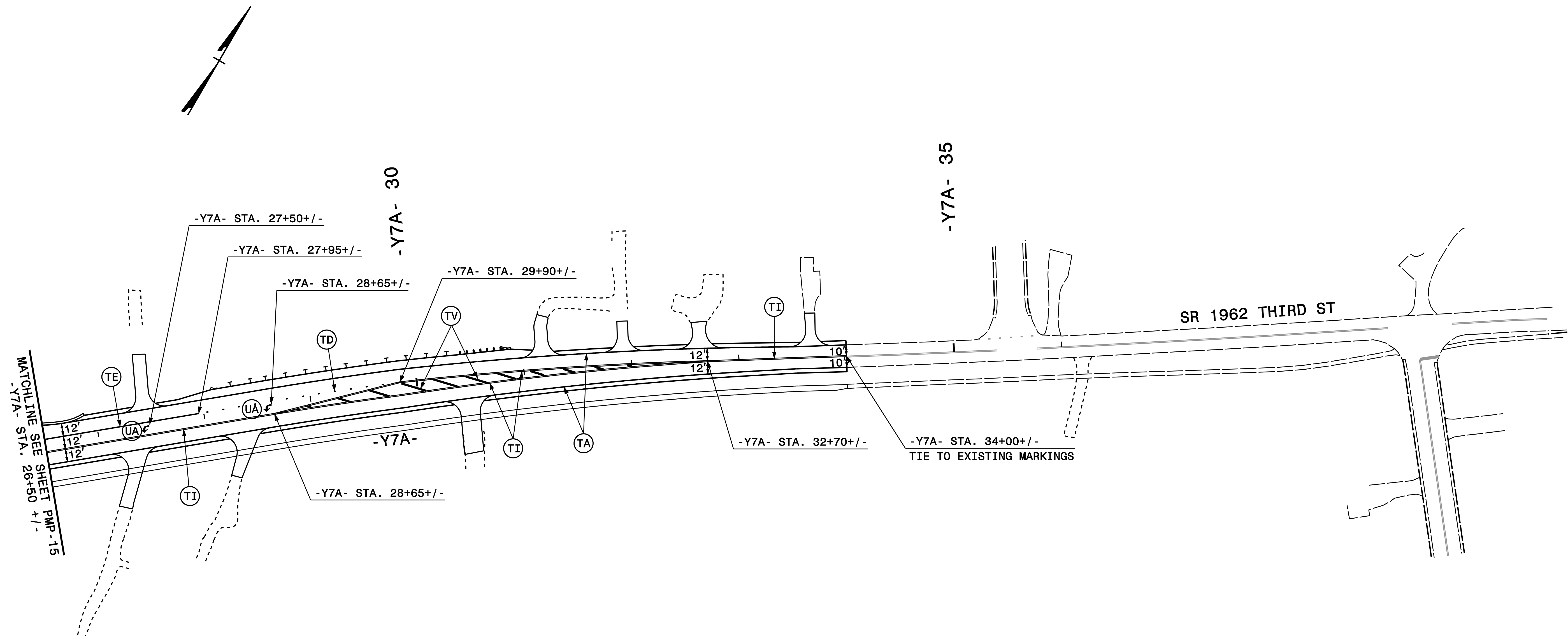
DOCUMENT NOT CONSIDERED FINAL
UNLESS ALL SIGNATURES COMPLETED

PROGRESSIVE
DESIGN GROUP, INC.
ENGINEERS • CONSULTANTS

APPROVED: *Jon May* DATE: 2/28/2017

SEAL

PAVEMENT MARKING PLAN



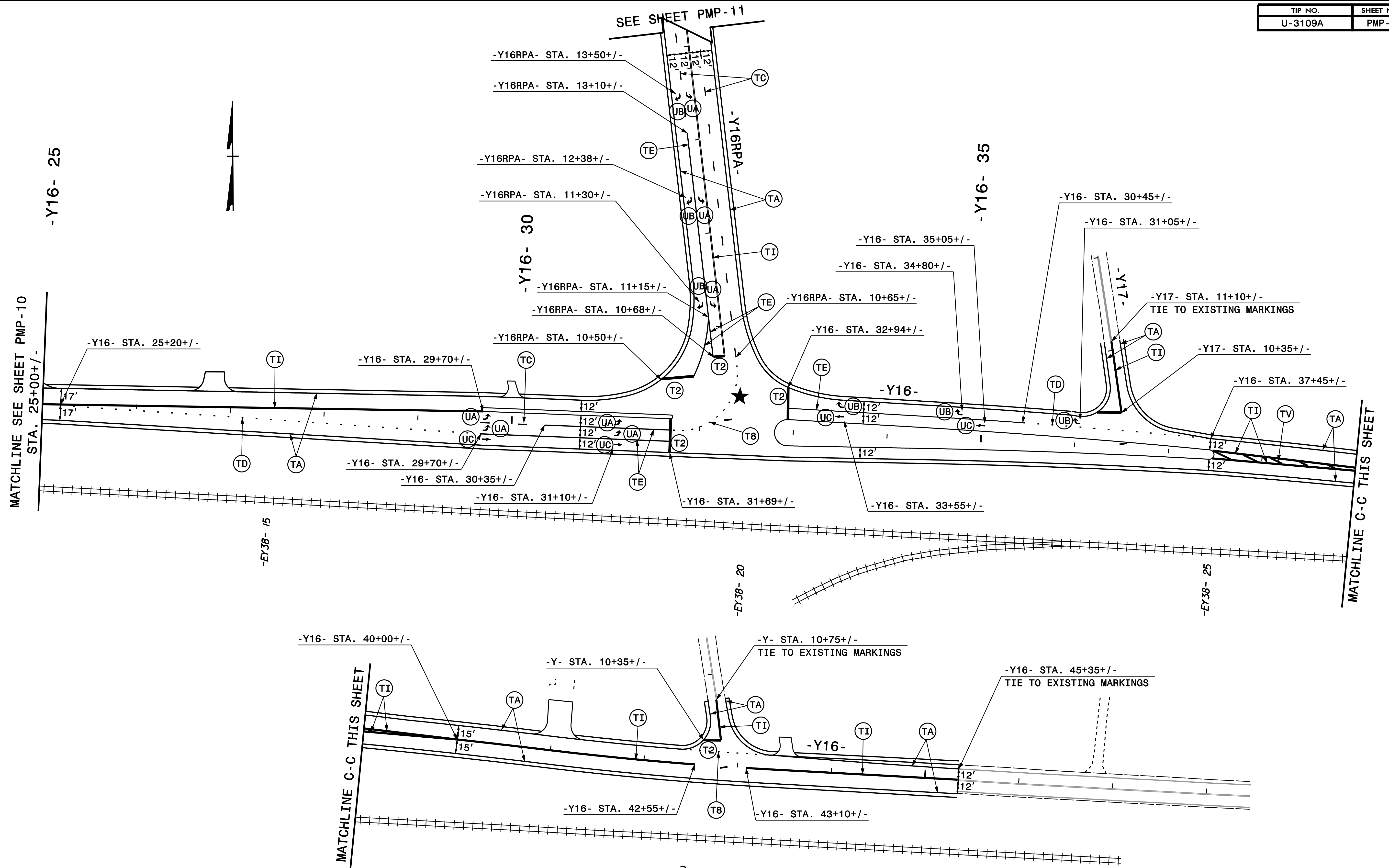
DOCUMENT NOT CONSIDERED FINAL
UNLESS ALL SIGNATURES COMPLETED

PROGRESSIVE
DESIGN GROUP, INC.
ENGINEERS • CONSULTANTS

APPROVED: *Jim Arey* DATE: 2/28/2017

SEAL

PAVEMENT MARKING PLAN



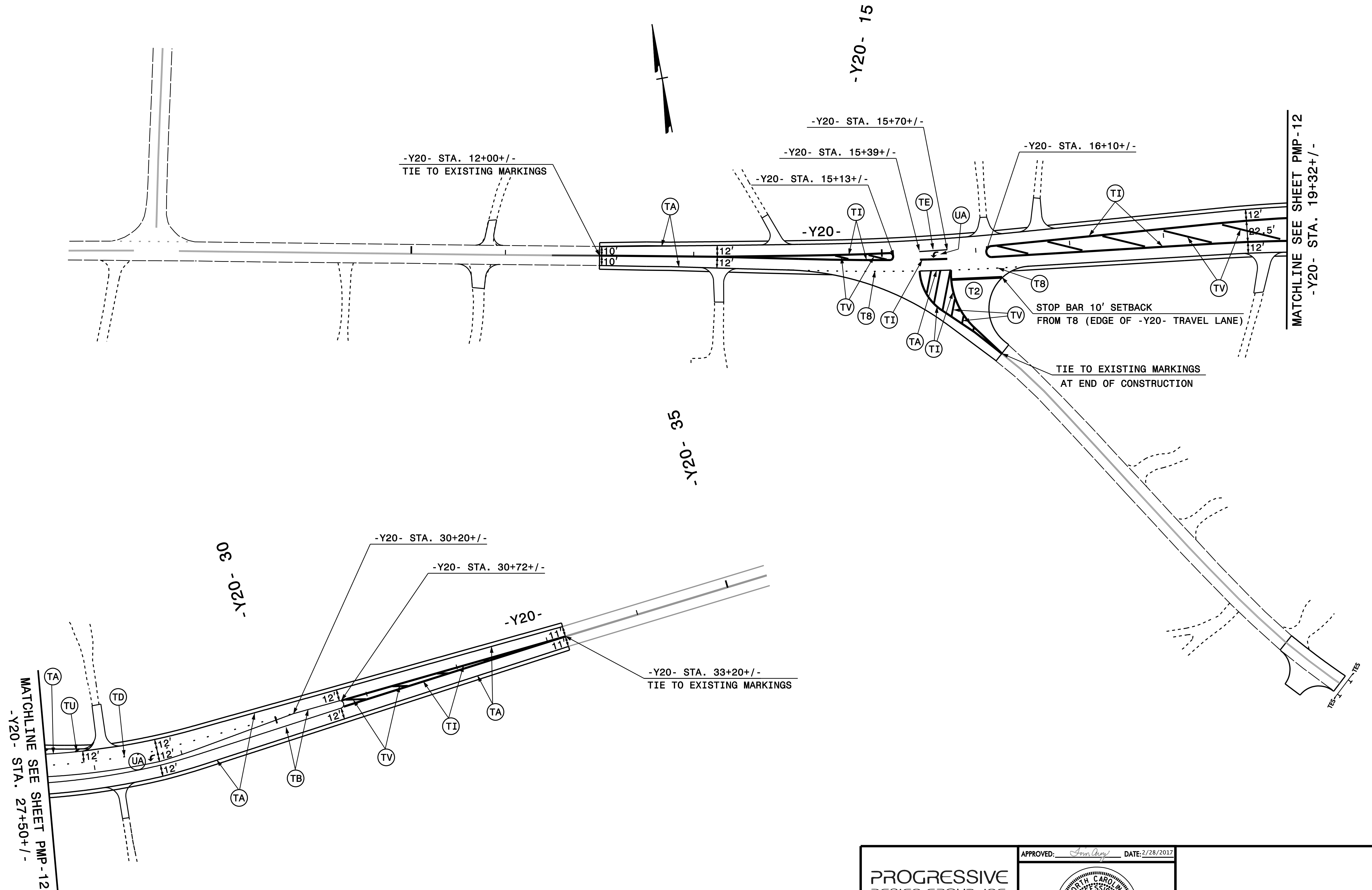
DOCUMENT NOT CONSIDERED FINAL
UNLESS ALL SIGNATURES COMPLETED

PROGRESSIVE
DESIGN GROUP, INC.
ENGINEERS • CONSULTANTS

APPROVED: *[Signature]* DATE: 2/28/2017

SEAL

PAVEMENT MARKING PLAN



MATCHLINE SEE SHEET PMP-12
-Y20- STA. 27+50+/-

MATCHLINE SEE SHEET PMP-12
-Y20- STA. 19+32+/-

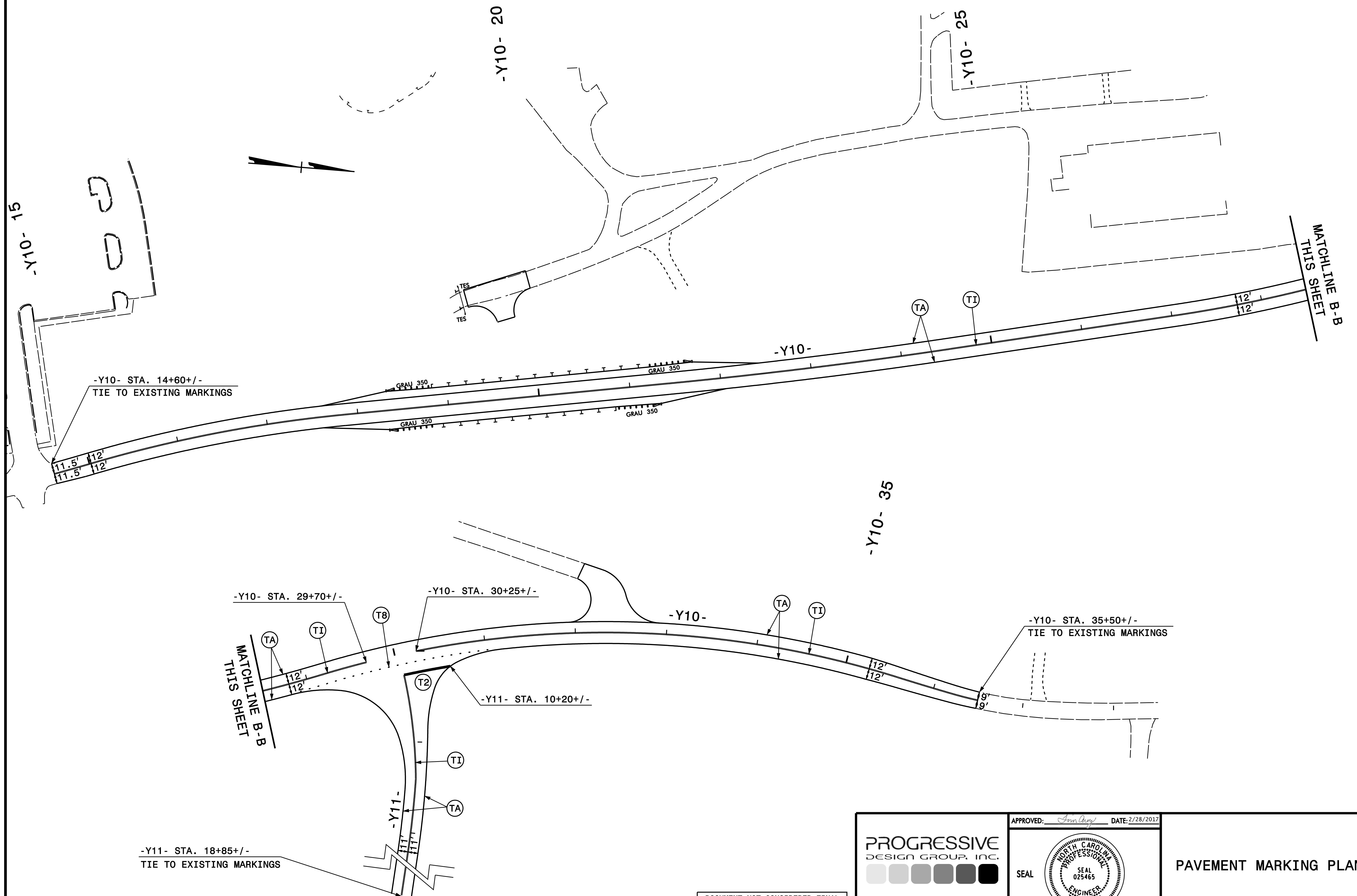
DOCUMENT NOT CONSIDERED FINAL
UNLESS ALL SIGNATURES COMPLETED

PROGRESSIVE
DESIGN GROUP, INC.
ENGINEERS • CONSULTANTS

APPROVED: *Jim Arey* DATE: 2/28/2017

SEAL

PAVEMENT MARKING PLAN



-Y11- STA. 18+85+/-
TIE TO EXISTING MARKINGS

DOCUMENT NOT CONSIDERED FINAL
UNLESS ALL SIGNATURES COMPLETED

PROGRESSIVE
DESIGN GROUP, INC.
ENGINEERS • CONSULTANTS

APPROVED: *Jim Arey* DATE: 2/28/2017

SEAL

PAVEMENT MARKING PLAN