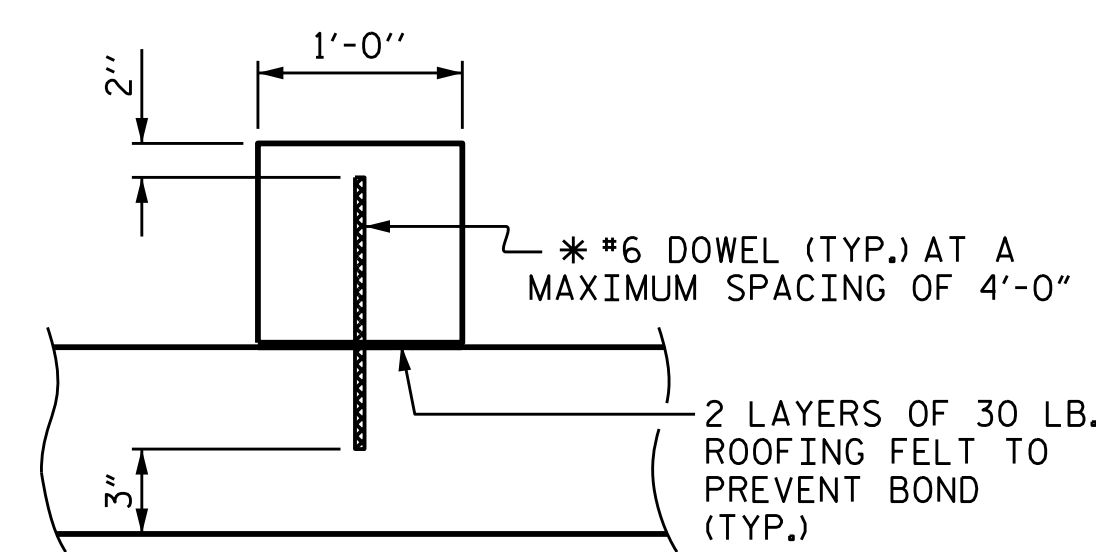


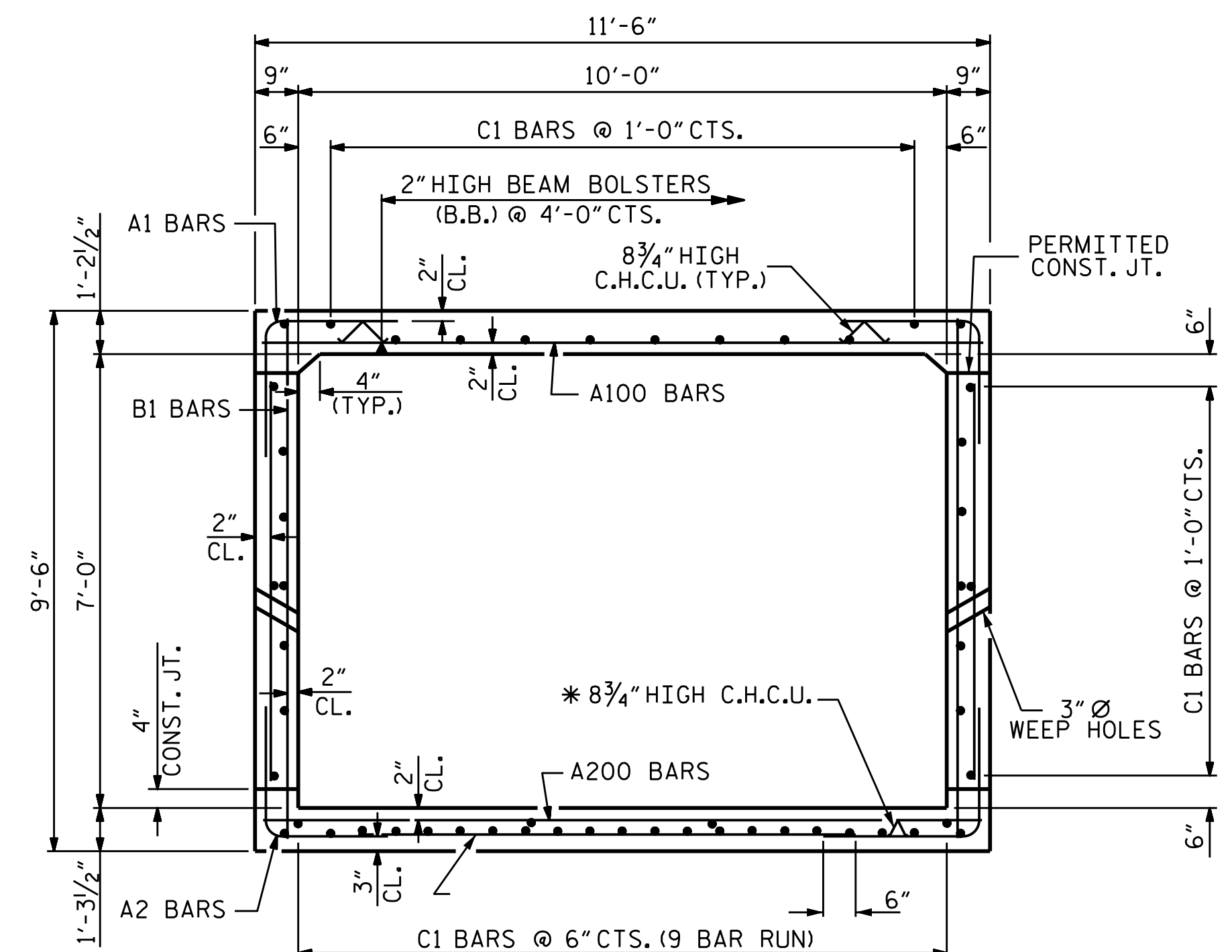
PLAN OF SILL LOCATION

BAR TYPE		BAR SCHEDULE				
BAR	NO.	SIZE	TYPE	LENGTH	WEIGHT	
A100	415	#7	STR	11'-1"	9402	
A101	4	#7	STR	9'-1"	74	
A102	4	#7	STR	7'-2"	59	
A103	4	#7	STR	5'-4"	44	
A104	4	#7	STR	3'-5"	28	
A200	415	#7	STR	11'-1"	9402	
A201	4	#7	STR	9'-1"	74	
A202	4	#7	STR	7'-2"	59	
A203	4	#7	STR	5'-4"	44	
A204	4	#7	STR	3'-5"	28	
SPLICE LENGTH CHART						
BAR	SIZE	LENGTH				
A1	#4	7'-1"	3501			
A2	#4	6'-9"	3337			
C1	#4	1'-11"				
B1	464	#4	STR	9'-0"	2790	
B2	740	#4	STR	6'-4"	3131	
C1	477	#4	STR	27'-7"	8789	
D1	16	#6	STR	1'-10"	44	
D2	10	#6	STR	2'-7"	39	
F1	46	#4	STR	4'-9"	146	
G1	4	#4	STR	12'-10"	34	
S1	12	#8	STR	12'-10"	411	
REINFORCING STEEL					= 41,436 LBS	



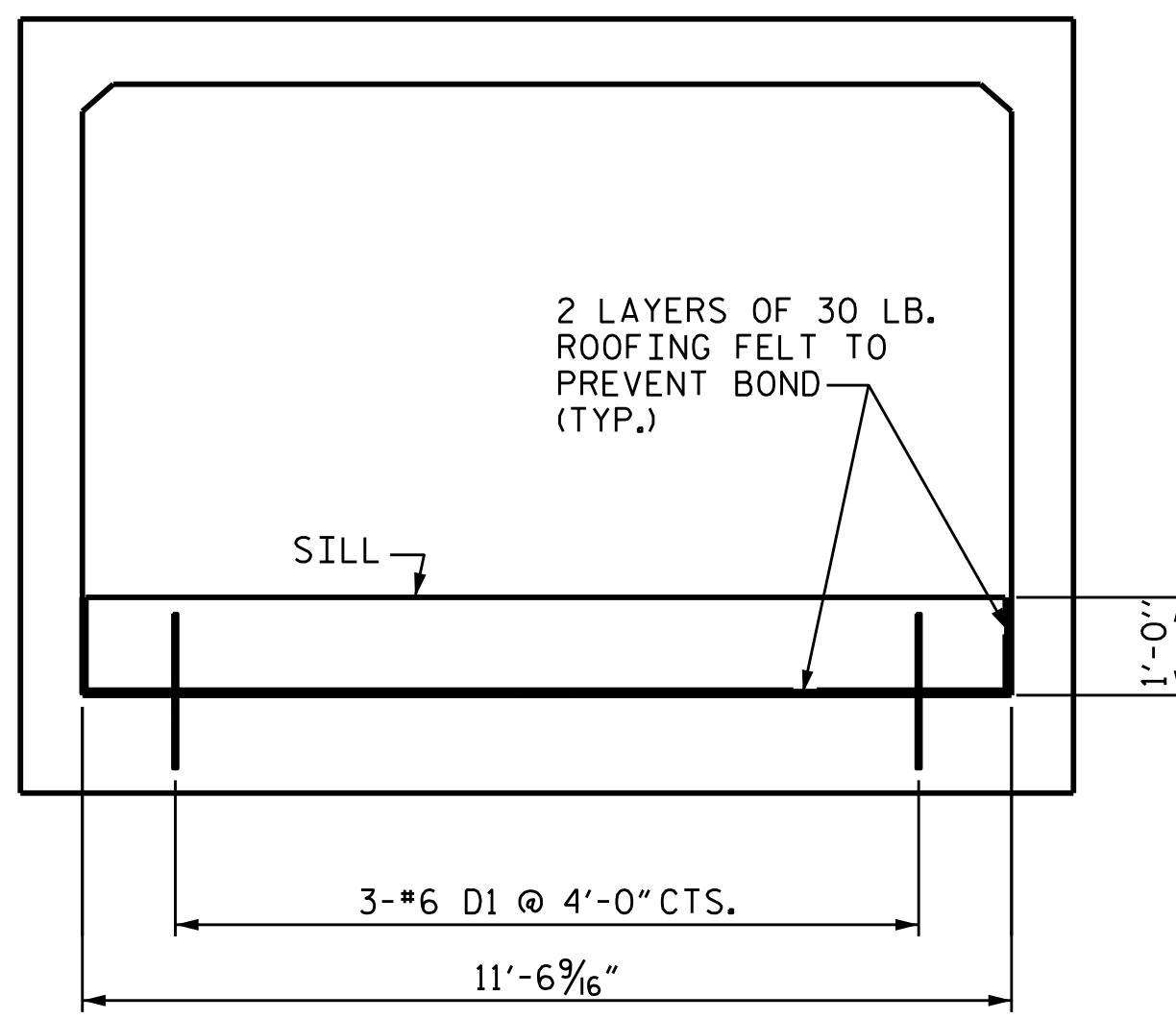
SECTION THROUGH SILL AND BAFFLE

* DOWELS MAY BE PUSHED INTO GREEN CONCRETE AFTER SLAB HAS BEEN FLOAT FINISHED.



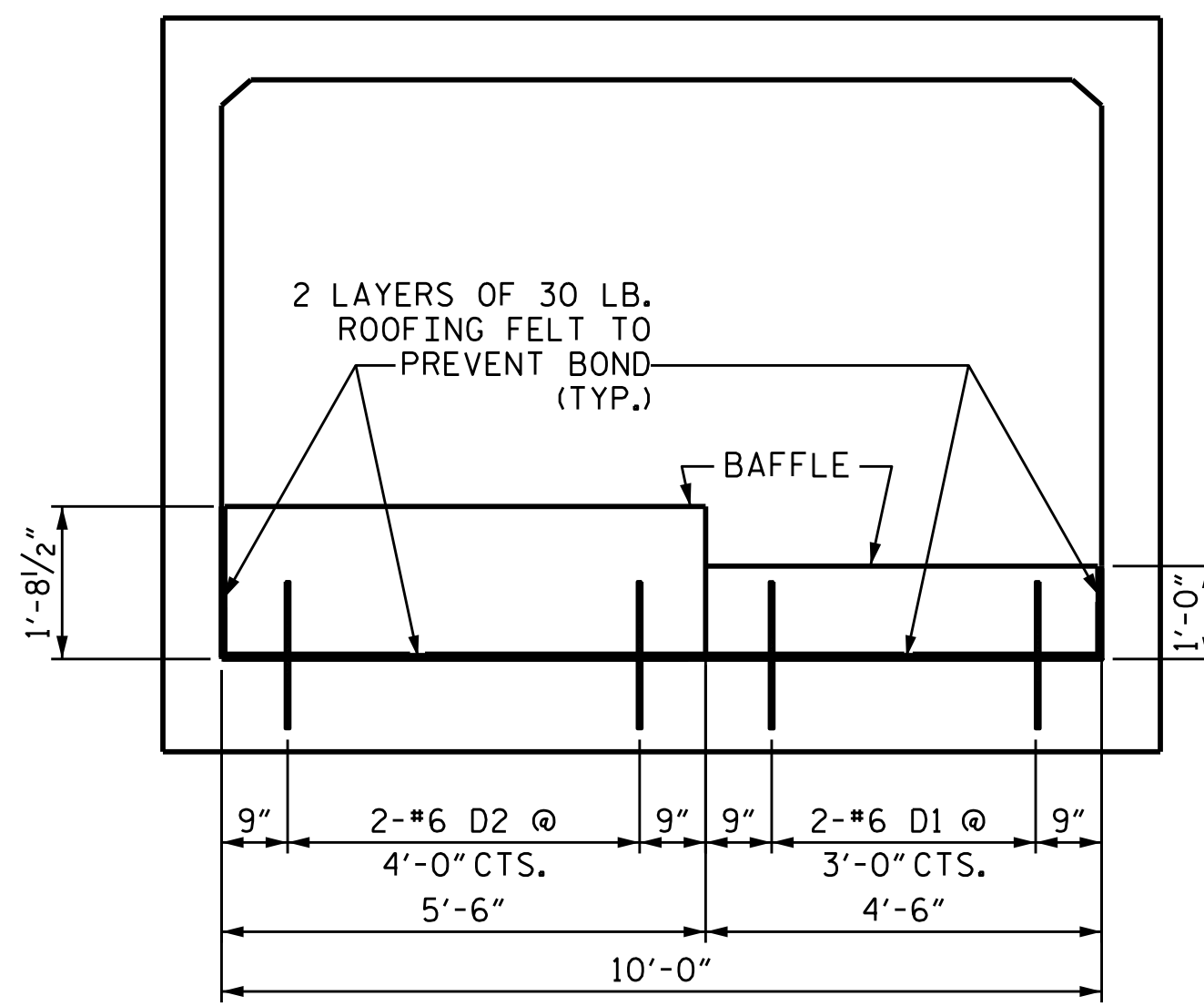
RIGHT ANGLE SECTION OF BARREL

THERE ARE 53 C1 BARS IN SECTION OF BARREL (9 BAR RUN)



ELEVATION

CULVERT SILL DETAILS



ELEVATION

CULVERT BAFFLE DETAILS

ALTERNATE HIGH SIDE OF BATTLE ALONG CULVERT LENGTH

NOTES:

BED MATERIAL BETWEEN BAFFLES IN THE CULVERT SHALL PROVIDE A CONTINUOUS LOW FLOW CHANNEL.

THE BED MATERIAL SHALL BE NATIVE MATERIAL, WHICH CONSISTS OF MATERIAL THAT IS EXCAVATED FROM THE STREAM BED AT THE PROJECT SITE DURING CULVERT CONSTRUCTION. NATIVE MATERIAL IS SUBJECT TO APPROVAL BY THE ENGINEER AND MAYBE SUBJECT TO PERMIT CONDITIONS.

TOP OF SILLS SHOULD MATCH STREAM BED ELEVATION IN LOW FLOW CHANNEL OF STREAM.

CLASS B RIP RAP MAY BE USED TO SUPPLEMENT NATIVE MATERIAL. NATIVE MATERIAL SHOULD BE PLACED ON TOP TO FILL VOIDS AND PROVIDE A FLAT SURFACE FOR ANIMAL PASSAGE.

PROJECT NO. U-3109A
ALAMANCE COUNTY
 STATION: 179+55.00 -L-

SHEET 3 OF 5



DocuSigned by:
 Kristy W. Alford
 3/16/2017

STATE OF NORTH CAROLINA
 DEPARTMENT OF TRANSPORTATION
 RALEIGH
 SINGLE 10 FT. X 7 FT.
 CONCRETE BOX CULVERT
 120° SKEW

ASSEMBLED BY: A. SORSENGINH DATE: 4/2014
 CHECKED BY: K.W. ALFORD DATE: 2/2017
 DESIGN ENGINEER OF RECORD:
A. SORSENGINH DATE: 4/2014

DOCUMENT NOT CONSIDERED FINAL
 UNLESS ALL SIGNATURES COMPLETED

REVISIONS						SHEET NO.
NO.	BY:	DATE:	NO.	BY:	DATE:	C2-3
1			3			TOTAL SHEETS
2			4			5