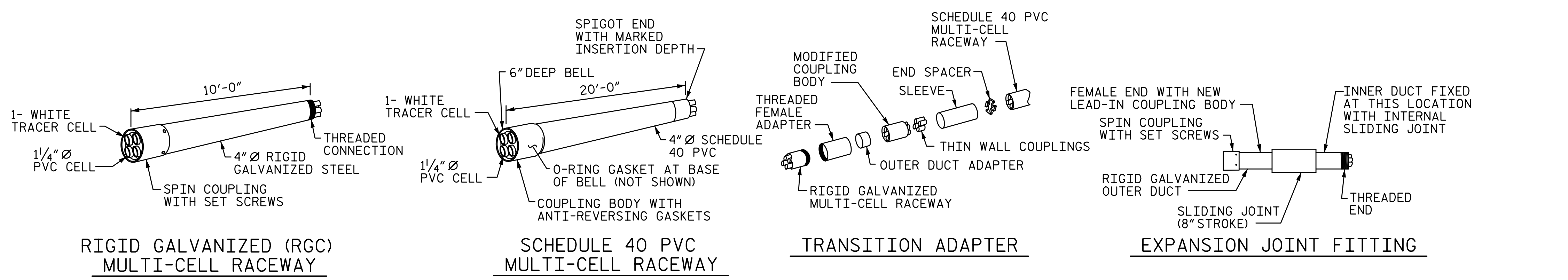


1/6/2017 8:11:16 AM G:\Projects\2014\U-3109A\Structures\Site 2\Site 2-Str 3 Bridge 435 (NBL)\Drawings\Final\403_U3109A_smu_ecs.dgn



DETAIL "D"
4" MULTI-CELL COMPONENTS

NOTES:

THE CONTRACTOR SHALL BE RESPONSIBLE FOR DETERMINING THE TOTAL QUANTITY OF CONDUIT NEEDED TO COMPLETE THE WORK AND THAT THE CONDUIT(S) ARE PLACED AT THE NOTED DIMENSION AND ABOVE THE BOTTOM OF THE GIRDER.

THE INSTALLATION OF THE CONDUIT SYSTEM SHALL BE PAID FOR AS LUMP SUM. THE PRICE SHALL INCLUDE ALL CONDUIT, HANGERS, STABILIZERS, EXPANSION JOINTS, CONCRETE INSERTS, PVC SLEEVES AND ALL NECESSARY HARDWARE TO COMPLETE THE WORK.

THE CONTRACTOR SHALL FIELD VERIFY THAT THE CONDUIT SYSTEM IS NOT IN CONFLICT WITH THE GUARDRAIL POSTS.

SEE DETAIL "C" FOR HANGER ASSEMBLY INSTALLATION.

INSTALL SLEEVES PARALLEL TO GIRDERS. SEE DETAIL "B" FOR SLEEVE INSTALLATION.

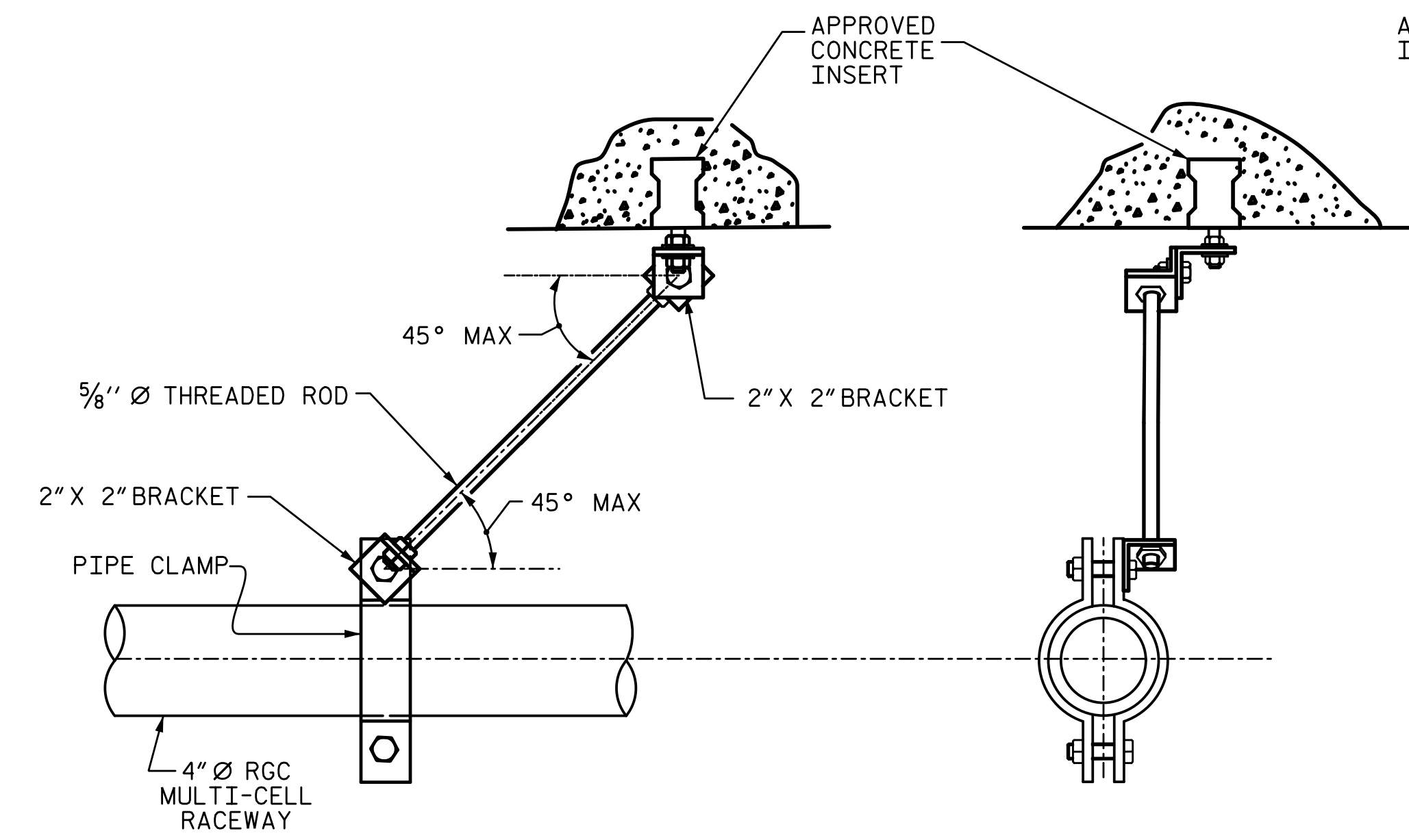
PROVIDE TRANSITION ADAPTER AND EXPANSION JOINT FOR CONDUIT AT END BENT 1 AND END BENT 2.

INSTALL STABILIZERS AT THIRD POINTS BETWEEN DECK EXPANSION JOINTS. STABILIZER CAN NOT BE USED INSTEAD OF A HANGER ASSEMBLY.

THE CONCRETE SCREW INSERT SHALL HAVE A ROD SIZE OF 5/8" AND A PULL FORCE OF 1260 lbs.

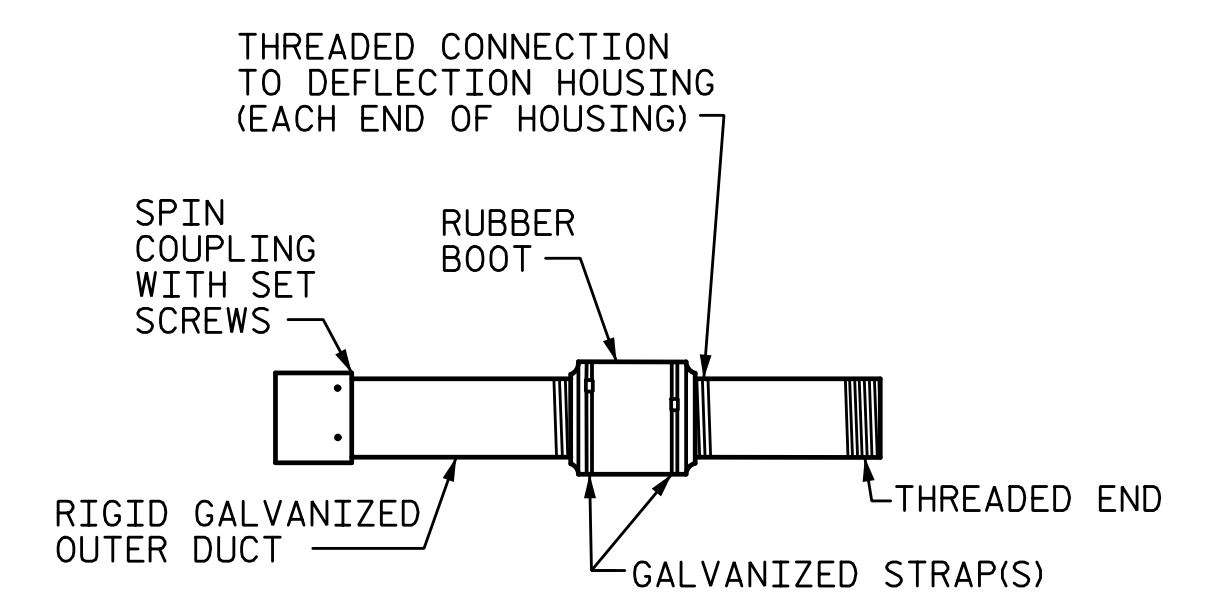
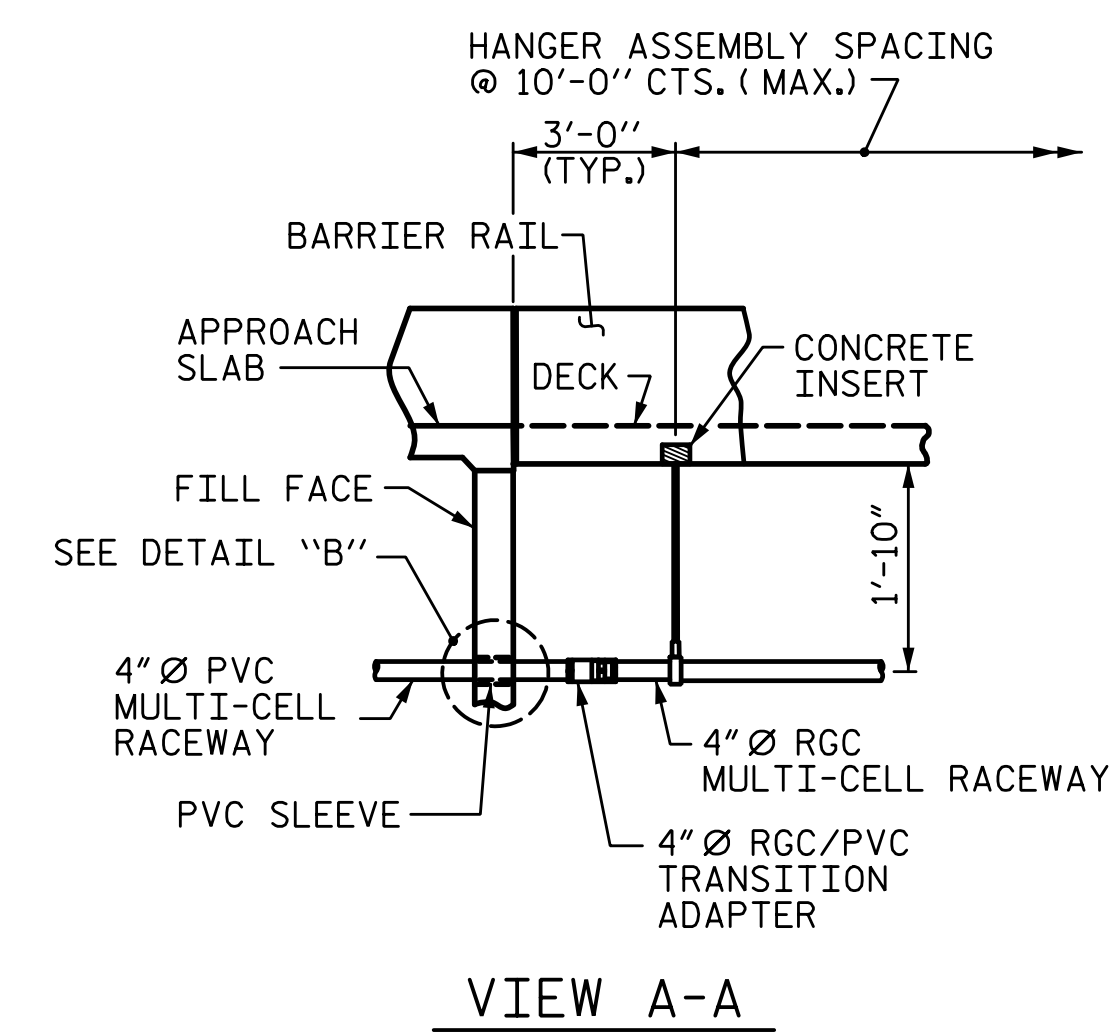
FOR ELECTRICAL CONDUIT SYSTEM, SEE SPECIAL PROVISIONS.

INSTALL DEFLECTION COUPLER AT EACH BENT. SEE DETAIL "F".

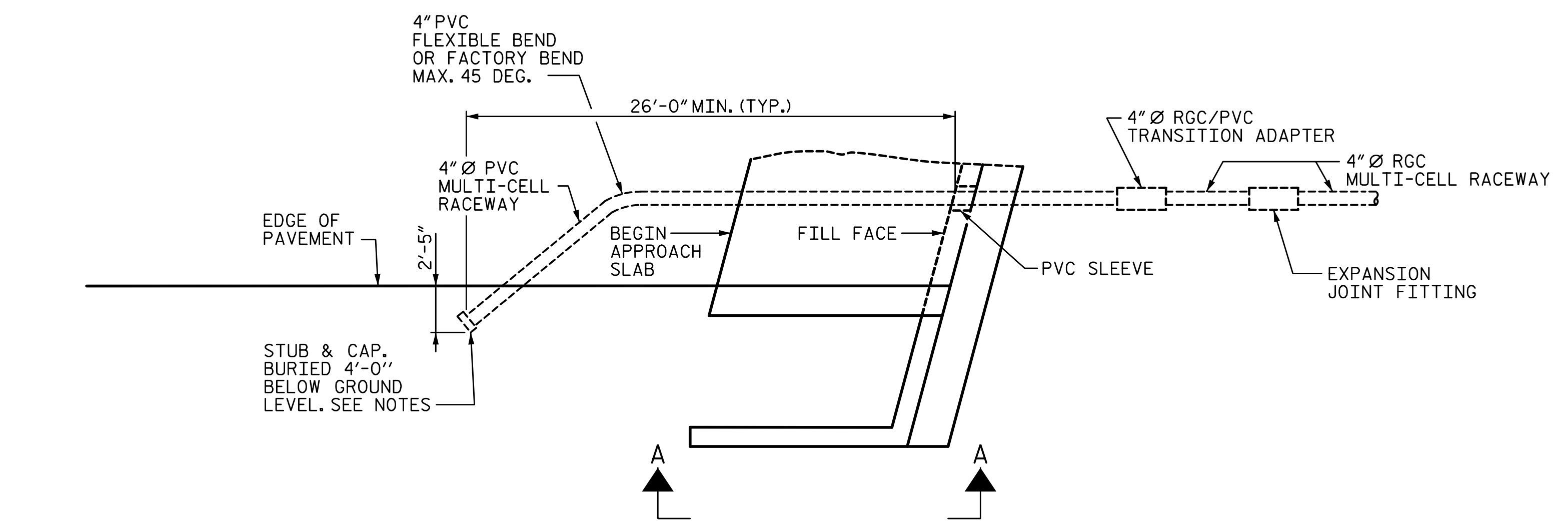


DETAIL "E"
STABILIZER

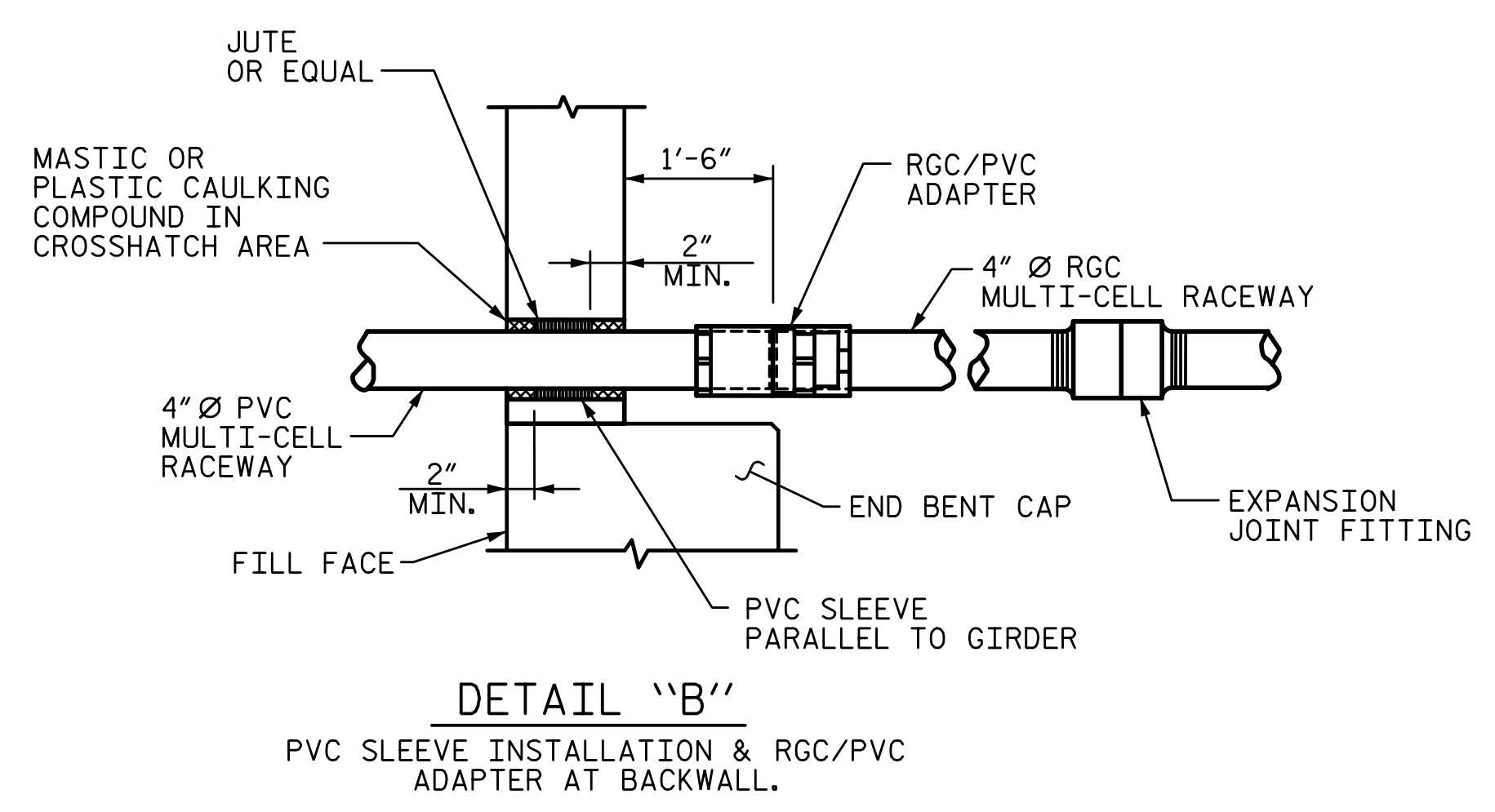
DETAIL "C"
HANGER ASSEMBLY



DETAIL "F"
DEFLECTION COUPLING



DETAIL "A"
TERMINATION OF CONDUIT AT WING WALL (END BENT 1 SHOWN, END BENT 2 SIMILAR.)



DETAIL "B"
PVC SLEEVE INSTALLATION & RGC/PVC ADAPTER AT BACKWALL.

PROJECT NO. U-3109A
ALAMANCE COUNTY
 STATION: 146+61.35 -L-

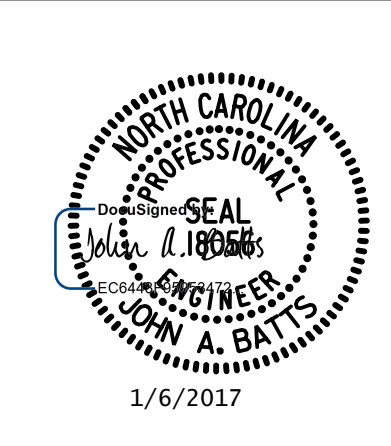
SHEET 2 OF 2

STATE OF NORTH CAROLINA
 DEPARTMENT OF TRANSPORTATION
 RALEIGH

ELECTRICAL CONDUIT SYSTEM DETAILS
 (NBL)

REVISIONS						SHEET NO. S03-49
NO.	BY:	DATE:	NO.	BY:	DATE:	
1			3			TOTAL SHEETS S03-53
2			4			

PLANS PREPARED BY:
SIMPSON ENGINEERS & ASSOCIATES
 5640 Dillard Drive
 Suite 200
 Cary, NC 27518
 (919) 852-0468
 (919) 852-0598 (Fax)
 www.simpsonengr.com
 LICENSURE NO. C-2521



ELECTRIC CONDUIT DETAILS

DRAWN BY: T. BANKOVICH DATE: 9-15
 CHECKED BY: J.A. BATTS DATE: 9-15
 DESIGN ENGINEER OF RECORD: J.A. BATTS DATE: 9-15