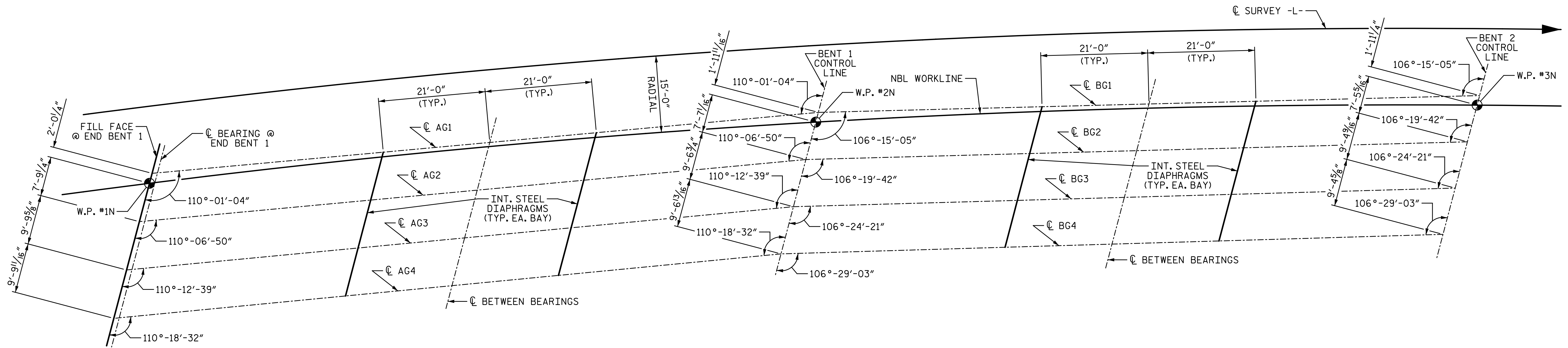


I:\6\2017 8:11:08 AM G:\Projects\2014\U-3109A\Structures\Site 2\Site 2-Str 3 Bridge 435 (NBL)\Drawings\Final\403\_U3109A\_smu\_fp.dgn



EXP.  
P1, E4

SPAN A

FIX. P2, E4    FIX. P3, E4

SPAN B

FIX. P4, E4    FIX. P4, E4

**PARTIAL GIRDER LAYOUT**  
(END BENT 1, BENT 1 AND BENT 2 ARE PARALLEL)

PROJECT NO. U-3109A  
ALAMANCE COUNTY  
STATION: 146+61.35 -L-

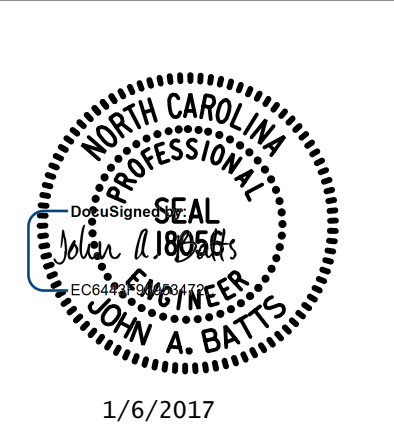
SHEET 1 OF 2

STATE OF NORTH CAROLINA  
DEPARTMENT OF TRANSPORTATION  
RALEIGH  
SUPERSTRUCTURE

**GIRDER LAYOUT**  
(NBL)

REVISIONS						SHEET NO.
NO.	BY:	DATE:	NO.	BY:	DATE:	TOTAL SHEETS
1			3			S03-18
2			4			S03-53

PLANS PREPARED BY:  
**SIMPSON ENGINEERS & ASSOCIATES**  
5640 Dillard Drive  
Suite 200  
Cary, NC 27518  
(919) 852-0468  
(919) 852-0598 (Fax)  
www.simpsonengr.com  
LICENSURE NO. C-2521



DRAWN BY: T. BANKOVICH    DATE: 9-15  
CHECKED BY: J.A. BATT'S    DATE: 9-15  
DESIGN ENGINEER OF RECORD: J.A. BATT'S    DATE: 9-15

STR. #3