

1/6/2017 8:11:05 AM G:\Projects\2014\U-3109A\Structures\Site 2\Site 2-Str 3 Bridge 435 (NBL)\Drawings\Final\403\_U3109A\_smu\_lr\_fr.dgn

## LOAD AND RESISTANCE FACTOR RATING (LRFR) SUMMARY FOR PRESTRESSED CONCRETE GIRDERS

LEVEL	VEHICLE	WEIGHT (W) (TONS)	CONTROLLING LOAD RATING #	MINIMUM RATING FACTORS (RF)	TONS = W x RF	STRENGTH I LIMIT STATE										SERVICE III LIMIT STATE										COMMENT NUMBER
						MOMENT					SHEAR					MOMENT										
						LIVE-LOAD FACTORS (γ <sub>LL</sub> )	DISTRIBUTION FACTORS (DF)	RATING FACTOR	SPAN	GIRDER LOCATION	DISTANCE FROM LEFT END OF SPAN (FT)	DISTRIBUTION FACTORS (DF)	RATING FACTOR	SPAN	GIRDER LOCATION	DISTANCE FROM LEFT END OF SPAN (FT)	LIVE-LOAD FACTORS (γ <sub>LL</sub> )	DISTRIBUTION FACTORS (DF)	RATING FACTOR	SPAN	GIRDER LOCATION	DISTANCE FROM LEFT END OF SPAN (FT)				
DESIGN LOAD RATING	HL-93 (INVENTORY)	N/A	①	1.12	--	1.75	0.787	1.33	D	EL	49.9	0.746	1.16	D	I	29.6	0.80	0.787	1.12	C	EL	63.9				
	HL-93 (OPERATING)	N/A		1.65	--	1.35	0.787	1.73	D	EL	49.9	0.747	1.65	C	I	25.1	N/A	--	--	--	--	--				
	HS-20 (INVENTORY)	36.000	②	1.67	60.1	1.75	0.787	1.86	D	EL	49.9	0.747	1.76	C	I	25.1	0.80	0.787	1.67	C	EL	63.9				
	HS-20 (OPERATING)	36.000		2.36	85.0	1.35	0.787	2.41	D	EL	49.9	0.747	2.36	C	I	25.1	N/A	--	--	--	--	--				
LEGAL LOAD RATING	SINGLE VEHICLE (SV)	SNSH	13.500		3.26	44.0	1.40	0.787	5.52	D	EL	49.9	0.747	6.12	C	I	25.1	0.80	0.787	3.26	D	EL	49.9			
		SNGARBS2	20.000		2.32	46.4	1.40	0.787	4.00	D	EL	49.9	0.747	4.17	C	I	25.1	0.80	0.787	2.32	C	EL	63.9			
		SNAGRIS2	22.000		2.16	47.5	1.40	0.787	3.74	D	EL	49.9	0.747	3.81	C	I	25.1	0.80	0.787	2.16	C	EL	63.9			
		SNCOTTS3	27.250		1.62	44.1	1.40	0.787	2.74	D	EL	49.9	0.747	2.88	C	I	25.1	0.80	0.787	1.62	D	EL	49.9			
		SNAGGRS4	34.925		1.31	45.8	1.40	0.787	2.25	D	EL	49.9	0.747	2.27	C	I	25.1	0.80	0.787	1.31	C	EL	63.9			
		SNS5A	35.550		1.29	45.9	1.40	0.787	2.20	D	EL	49.9	0.747	2.27	C	I	25.1	0.80	0.787	1.29	C	EL	63.9			
		SNS6A	39.950		1.16	46.3	1.40	0.787	2.00	D	EL	49.9	0.747	2.03	C	I	25.1	0.80	0.787	1.16	C	EL	63.9			
		SNS7B	42.000		1.11	46.6	1.40	0.787	1.90	D	EL	49.9	0.747	1.96	C	I	25.1	0.80	0.787	1.11	C	EL	63.9			
	TRUCK TRACTOR SEMI-TRAILER (TTST)	TNAGRIT3	33.000		1.41	46.5	1.40	0.787	2.43	D	EL	49.9	0.747	2.49	C	I	25.1	0.80	0.787	1.41	C	EL	63.9			
		TNT4A	33.075		1.42	47.0	1.40	0.787	2.44	D	EL	49.9	0.747	2.44	C	I	25.1	0.80	0.787	1.42	C	EL	63.9			
		TNT6A	41.600		1.14	47.4	1.40	0.787	1.98	D	EL	49.9	0.747	2.04	C	I	25.1	0.80	0.787	1.14	C	EL	63.9			
		TNT7A	42.000		1.14	47.9	1.40	0.787	1.98	D	EL	49.9	0.747	2.01	C	I	25.1	0.80	0.787	1.14	C	EL	63.9			
		TNT7B	42.000		1.16	48.7	1.40	0.787	2.02	D	EL	49.9	0.747	1.93	C	I	25.1	0.80	0.787	1.16	C	EL	63.9			
		TNAGRIT4	43.000		1.12	48.2	1.40	0.787	1.94	D	EL	49.9	0.747	1.86	C	I	25.1	0.80	0.787	1.12	C	EL	63.9			
TNAGT5A	45.000		1.06	47.7	1.40	0.787	1.84	D	EL	49.9	0.747	1.82	C	I	25.1	0.80	0.787	1.06	C	EL	63.9					
TNAGT5B	45.000	③	1.05	47.3	1.40	0.787	1.82	D	EL	49.9	0.747	1.76	C	I	25.1	0.80	0.787	1.05	C	EL	63.9					

**LOAD FACTORS:**

DESIGN LOAD RATING FACTORS	LIMIT STATE	γ <sub>DC</sub>	γ <sub>DW</sub>
	STRENGTH I	1.25	1.50
	SERVICE III	1.00	1.00

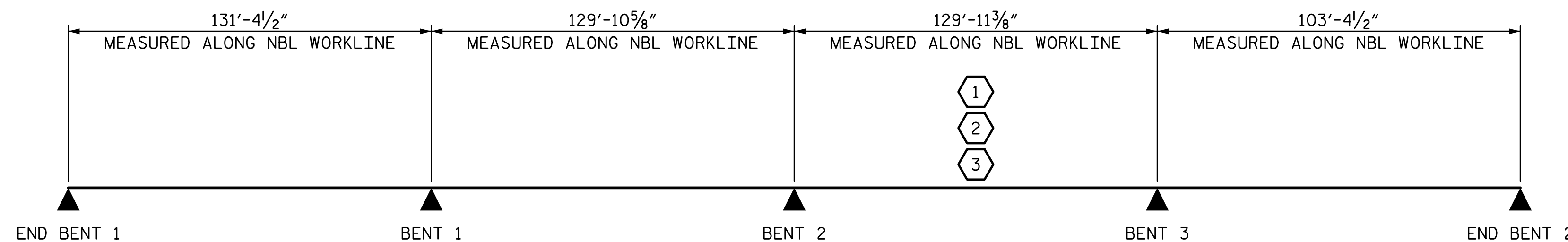
**NOTES:**

MINIMUM RATING FACTORS ARE BASED ON THE STRENGTH I AND SERVICE III LIMIT STATES.

ALLOWABLE STRESSES FOR SERVICE III LIMIT STATE ARE AS REQUIRED FOR DESIGN.

**COMMENTS:**

1. DISTANCE FROM LEFT END OF SPAN ARE MEASURED FROM C BEARING.

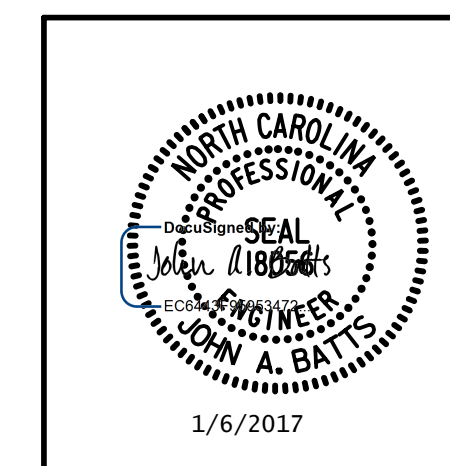


PROJECT NO. U-3109A  
ALAMANCE COUNTY  
 STATION: 146+61.35 -L-

DRAWN BY: T. BANKOVICH DATE: 9-15  
 CHECKED BY: J.A. BATTS DATE: 9-15  
 DESIGN ENGINEER OF RECORD: J.A. BATTS DATE: 9-15

PLANS PREPARED BY:

**SIMPSON**  
**ENGINEERS**  
**& ASSOCIATES**  
 5640 Dillard Drive  
 Suite 200  
 Cary, NC 27518  
 (919) 852-0468  
 (919) 852-0598 (Fax)  
 www.simpsonengr.com  
 LICENSURE NO. C-2521



STATE OF NORTH CAROLINA  
 DEPARTMENT OF TRANSPORTATION  
 RALEIGH

**LRFR SUMMARY FOR  
 PRESTRESSED  
 CONCRETE GIRDERS  
 (NON-INTERSTATE TRAFFIC)  
 (NBL)**

REVISIONS						SHEET NO.
NO.	BY:	DATE:	NO.	BY:	DATE:	S03-7
1			3			TOTAL SHEETS
2			4			S03-53