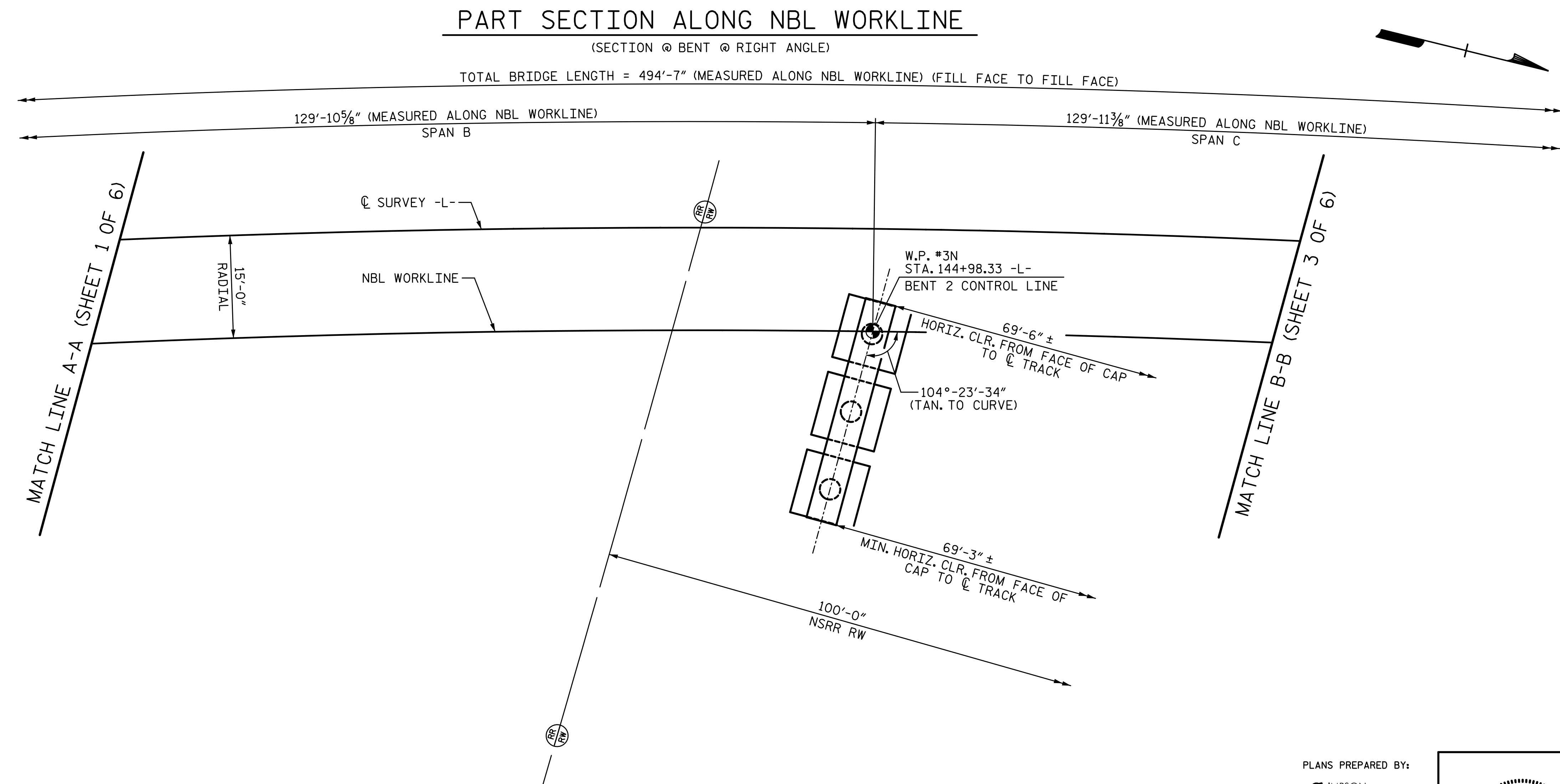
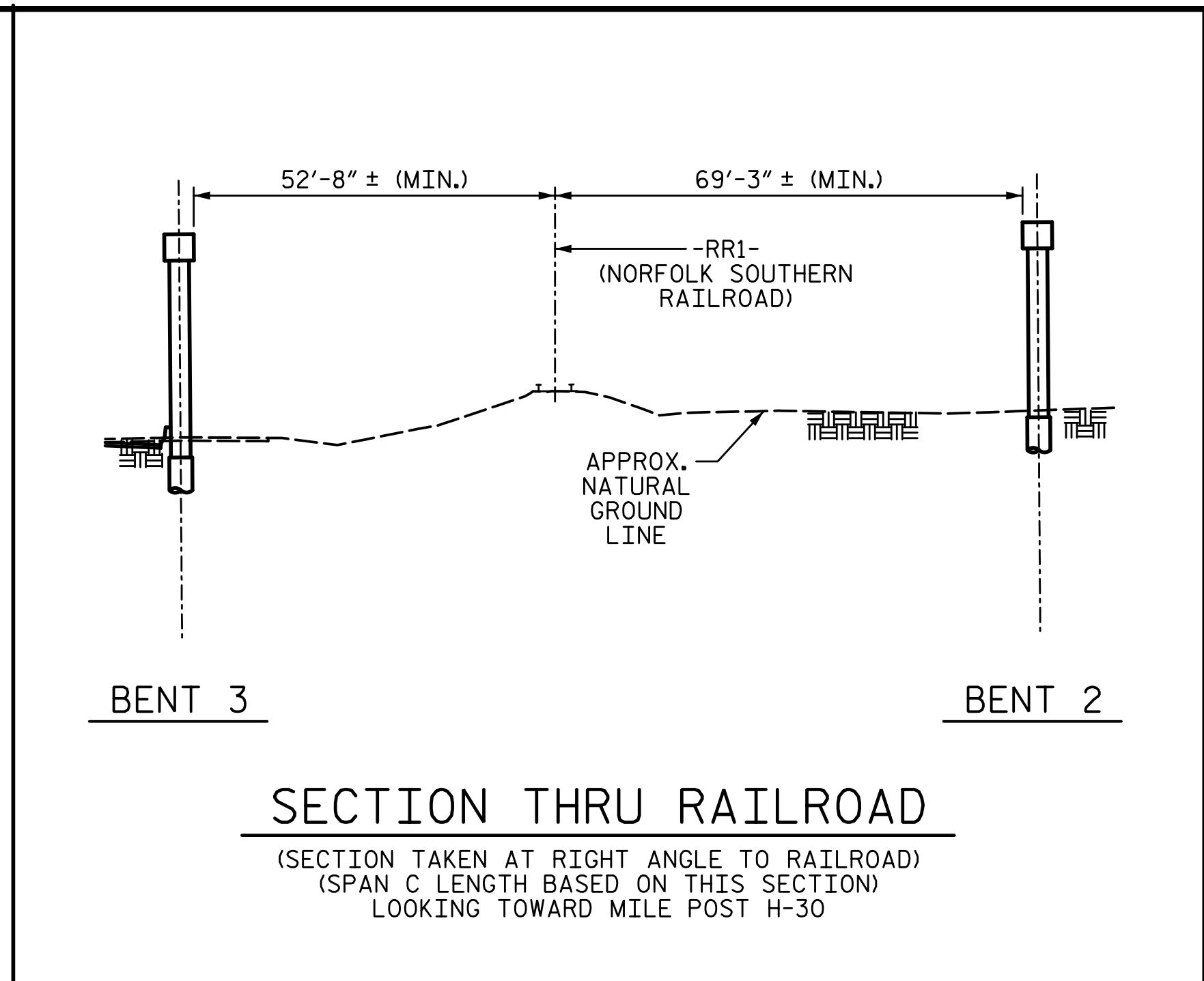
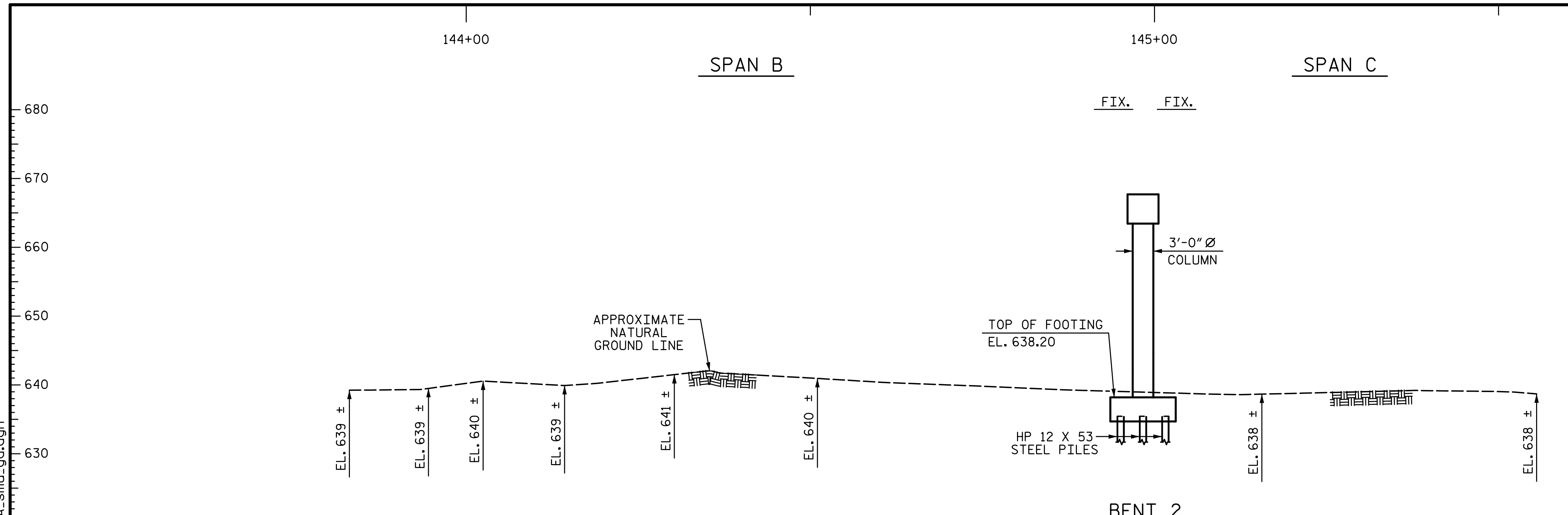


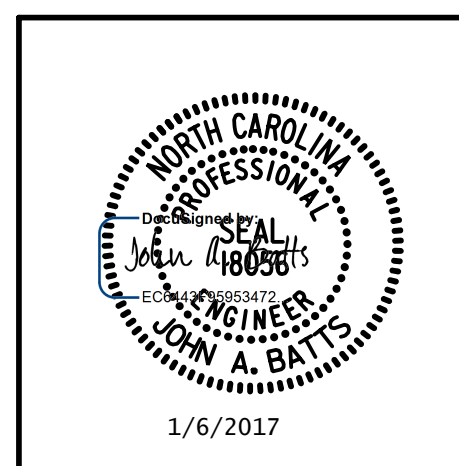
1/6/2017 8:11:04 AM G:\Projects\2014\U-3109A\Structures\Site 2\Site 2-Str 3 Bridge 435 (NBL)\Drawings\Final\403_U3109A_smu_qd.dgn



PROJECT NO. U-3109A
ALAMANCE COUNTY
 STATION: 146+61.35 -L-
22+02.76 -Y16-
 SHEET 2 OF 6

STATE OF NORTH CAROLINA DEPARTMENT OF TRANSPORTATION RALEIGH					
GENERAL DRAWING					
FOR NBL BRIDGE ON NC 119 OVER HOLT ST., NORFOLK SOUTHERN RAILROAD (NSRR) AND US 70 BETWEEN SR 1972 AND SR 1921 (NBL)					
REVISIONS				SHEET NO.	
NO.	BY:	DATE:	NO.	BY:	DATE:
1			3		
2			4		
					TOTAL SHEETS S03-53
					S03-2

PLANS PREPARED BY:
SIMPSON ENGINEERS & ASSOCIATES
 5640 Dillard Drive
 Suite 200
 Cary, NC 27518
 (919) 852-0468
 (919) 852-0598 (Fax)
 www.simpsonengr.com
 LICENSURE NO. C-2521



DRAWN BY: <u>T. BANKOVICH</u>	DATE: <u>9-15</u>
CHECKED BY: <u>J.A. BATTS</u>	DATE: <u>9-15</u>
DESIGN ENGINEER OF RECORD: <u>J.A. BATTS</u>	DATE: <u>9-15</u>